

TE Teile Nr.: 60-0251-011-000

IC Ref. Nr.: 60.251.11

Elektrische Werte

Bemessungsstrom
Durchgangswiderstand

max. 14 A*
< 5 mOhm

Werkstoff

Kontakt

Messing, vergoldet

Anschluss

Anschlussart/-bereich
max. Litzenaußendurchmesser
Abisolierlänge
Crimpeinstellungen

Crimp/ 0,50 - 1,5 mm²
ø2,7 mm
5 mm
sind individuell zu wählen

Mechanische Werte

Steckzyklen

500

Werkzeuge (nicht im Lieferumfang enthalten)

digitale Crimpzange

TE Teile Nr.: C0-0235-000-000
IC Ref. Nr.: C0.235.00

analoge Crimpzange

TE Teile Nr.: C0-0201-000-000
IC Ref. Nr.: C0.201.00

Positioniereinsatz

TE Teile Nr.: C0-0258-000-000
IC Ref. Nr.: C0.258.00

Crimpen - kraftunterstützt

Crimpmaschine

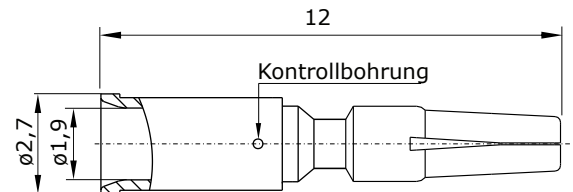
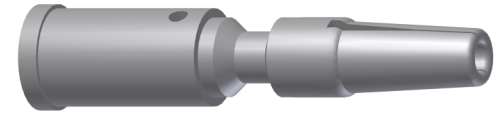
TE Teile Nr.: WA-1672-000-0-00
IC Ref. Nr.: WA10672

digitaler Crimpeinsatz, klein

TE Teile Nr.: C0-0372-000-000
IC Ref. Nr.: C0.372.00

digitaler Crimpeinsatz, mittel

TE Teile Nr.: C0-0373-000-000
IC Ref. Nr.: C0.373.00



Hauptabmessungen

Kontaktbuchse





Contact Socket 1 mm

TE part number: 60-0251-011-000
IC reference number: 60.251.11

Electrical Data

rated current max 14 A*
contact resistance < 5 mOhm

Material

contact brass, gold plated

Termination

cross-section crimp/ 0.50 - 1.5 mm²
max. outer wire diameter ø2.7 mm
stripping length 5 mm
crimp settings select individually

Mechanical Data

mating cycles 500

Tools (not part of product contents)

digital crimping tool TE part no.: C0-0235-000-000
IC ref. no.: C0.235.00

analog crimping tool TE part no.: C0-0201-000-000
IC ref. no.: C0.201.00

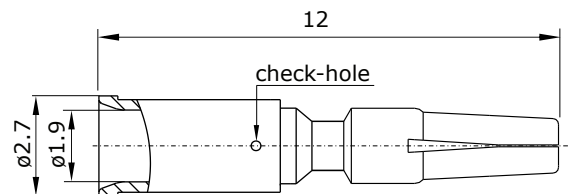
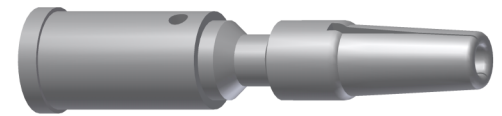
positioner TE part no.: C0-0258-000-000
IC ref. no.: C0.258.00

power crimping

crimping machine TE part no.: WA-1672-000-000
IC ref. no.: WA10672

digital crimp insert, small TE part no.: C0-0372-000-000
IC ref. no.: C0.372.00

digital crimp insert, medium TE part no.: C0-0373-000-000
IC ref. no.: C0.373.00



Main Dimensions
contact socket

Y6-B078-000-0EN issued: 03.05.2010/Ra; modified: 16.12.2019/HE

© 2018 TE Connectivity

TE Connectivity, TE connectivity (logo), intercontec (logo) and speedtec are trademarks.

While TE Connectivity (TE) has made every reasonable effort to ensure the accuracy of the information in this presentation, TE does not guarantee that it is error-free, nor does TE make any other representation, warranty or guarantee that the information is accurate, correct, reliable or current. TE reserves the right to make any adjustments to the information contained herein at any time without notice. TE expressly disclaims all implied warranties regarding the information contained herein, including, but not limited to, any implied warranties of merchantability or fitness for a particular purpose. The dimensions in this article are for reference purposes only and are subject to change without notice. Specifications are subject to change without notice. Consult TE for the latest dimensions and design specifications.

TE Connectivity Industrial GmbH
Bernrieder Straße 15
94559 Niederwinkling, Germany
+49 9962 2002 - 0
intercontec@te.com
www.intercontec.biz



* for max. wire cross-section