



## Screwless connector systems

3.5 mm / 50 mm / 508 mm pitch

### The new screwless connectors hold together.

Wherever a secure connection has to withstand strong vibrations or harshest environmental conditions, our connectors of the 110, 120 and 121 series are exactly the right choice.

Mechanical snap-in hooks ensure a secure connection and, together with the codable poles, this results in an equally pluggable product. The screwless versions with push-in spring connection are the perfect addition to our portfolio of PCB connector systems.

With almost 100 years of experience in the world of connectors, WECO is the supplier for most reliable and superior components, which are characterized by highest quality and longest durability.

We are your worldwide partner for standard products and also for customer specific solutions in various applications.

### OUTSTANDING PROPERTIES

- UL and CSA certified
- Suitable for highest ambient temperatures with “no-flame” material
- Glow wire resistance

### SPECIAL FEATURES

- Designed for harshest conditions: UV-resistant, corrosion and aging resistant, insulation-optimized, vibration-resistant, safe even under the toughest environmental conditions
- Poka-Yoke solutions
- all versions with test holes and additional test taps for series 120 and 121
- Simple and safe conductor connection through push-in technology

### UNIVERSAL APPLICATION

- Ideal in areas with modular technology for fast replacement of assemblies
- Ideally suited for installation in difficult areas or confined spaces
- Can be used in control technology and areas with particularly demanding operating conditions

ADAPTABILITY.  
RELIABILITY.  
PERFORMANCE.





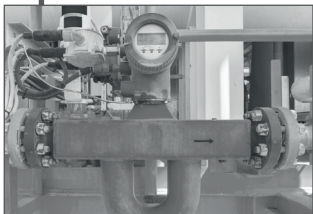
# Standard in modular design

With these three new screwless connectors and the matching pin strips, we offer the user a safe and convenient connection option of the WECO product family.

Versatile applicable ...



PROPERTY MANAGEMENT



FLOW CONTROLLER



ELECTRICITY METER



HEATING CONTROL



WEIGHING SYSTEMS

## 3.5 mm pitch

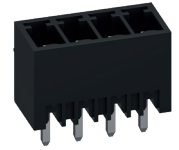


110-FEP-111

S  
T  
R  
I  
P  
S  
  
P  
I  
N



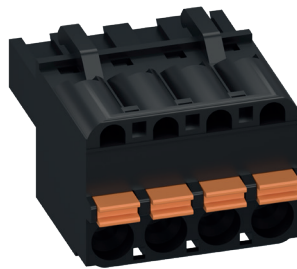
110-ME-111



110-ME-121

As the smallest version of the new screwless connectors with 3.5 mm pitch, the 110 series offers optimum connection solutions. An easy-to-use push-in connection ensures smooth assembly on site: Strip cable - plug in - done. Matching male connectors are available with horizontal and vertical plugging direction.

## 5.0 mm pitch



120-FEP-311

S  
T  
R  
I  
P  
S  
  
P  
I  
N

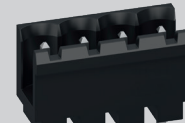
ON REQUEST



120-ME-111



120-ME-211



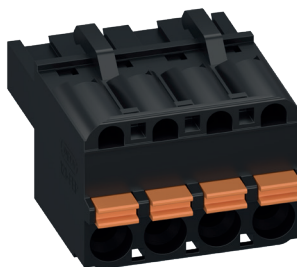
120-ME-121



120-ME-221

In the 5.0 mm pitch version, the 120 series is the big winner. Connection cross-sections of up to 2.5 mm<sup>2</sup> / 14 AWG offer a wide variety of applications. Matching pin strips are also available with horizontal and vertical mating direction, and additionally with side walls closed at the sides to prevent mis-mating.

## 5.08 mm pitch



121-FEP-311

S  
T  
R  
I  
P  
S  
  
P  
I  
N

ON REQUEST



121-ME-111



121-ME-211



121-ME-121



121-ME-221

The screwless connector system also offers excellent properties in 5.08 mm pitch. As with the 5.0 mm variant, the connector snaps securely onto the pin header by means of a snap-in hook. Unintentional loosening in applications in environments with strong vibrations is therefore almost impossible.

