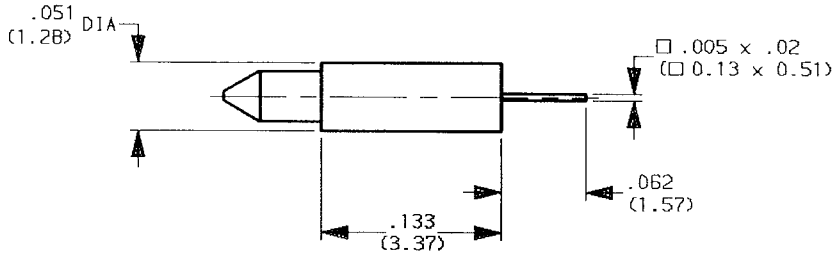


AMOVABLE CONTACT - .125 PANEL  
PACKAGING 10



WEIGHT oz ( g)

cables:

CHARACTERISTICS

NOMINAL IMPEDANCE	NA	Ω
FREQUENCY RANGE	NA	GHz
TEMPERATURE RATING	NA	°C
VSWR	NA	Max
RF INSERTION LOSS	NA	dB Max
VOLTAGE RATING	NA	Vrms
DIELECTRIC WITHSTANDING VOLTAGE	NA	Vrms
INSULATION RESISTANCE	NA	MΩ
HERMETIC SEAL	NA	cc/s cm <sup>3</sup> /s
LEAKAGE (pressurized only)	NA	psi kg/cm <sup>2</sup>
-	-	-
-	-	-

STANDARDISATION

CABLE RETENTION

CENTER CONTACT RETENTION

Axial force - mating end	NA	Lb Min
Axial force - opposite end	NA	Lb Min
Torque (Min)	NA	Inch.oz cm.N

RECOMMENDED TORQUES

Mating	NA	Inch. Lb cm.N
Panel nut	NA	Inch. Lb cm.N
Clamp nut	NA	Inch. Lb cm.N

CONSTRUCTION

CONNECTOR PARTS	MATERIALS	FINISH
-----------------	-----------	--------

BODY	-	-
OUTER CONTACT	-	-
CENTER CONTACT	Beryllium copper	Sold over nickel
INSULATORS	-	-
-	-	-
-	-	-
-	-	-
-	-	-
-	-	-

ISSUE	REVISION No	DESCRIPTION	BY	DATE
.	.	.	.	.
.	.	.	.	.
.	.	.	.	.
.	.	.	.	.

Initiated on 2. APR. 92

The information given here is subject to change without notice. Design changes may be in order to improve the product.



Superseded on