


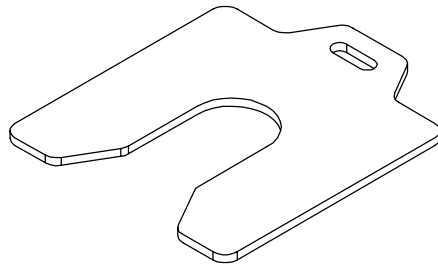
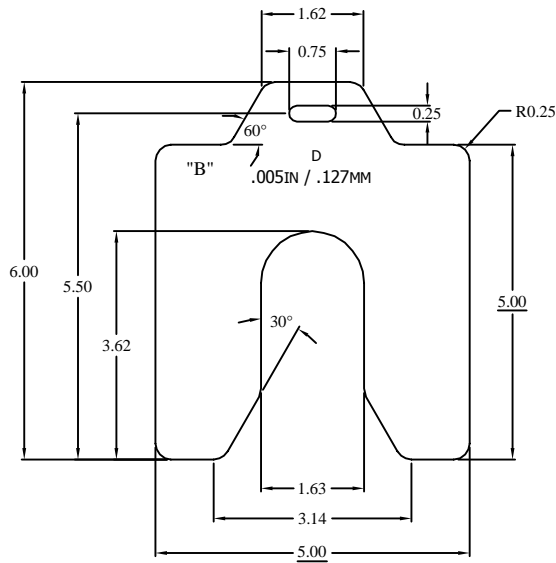
| REVISIONS | | | | | |
|-----------|-----|--|----------|-----|---------|
| ZONE | REV | DESCRIPTION | DATE | BY | APPRVD: |
| ZONE | 1 | INITIAL RELEASE | 6-6-07 | DMG | CLL |
| B7 | 2 | Added comment to optional etch or stamp "302" or "304" if material is SS302 or SS304 | 4-23-08 | DMG | CLL |
| B7 | 3 | See ECO 1011 | 3-19-09 | DMG | CLL |
| D1 | 4 | See ECO 1025 | 3-6-12 | DMG | CLL |
| B3 | 5 | See ECO 1026 - CHANGED TOLERANCE FOR THICKNESS | 6-9-12 | DGS | CLL |
| B3 | 6 | See ECO 1030 - CHANGED TOLERANCE FOR THICKNESS | 12-11-12 | DMG | CLL |
| B7 | 7 | See ECO 1041 - Newly developed Geometry, changed marking information and added barcode | 7-15-15 | DMG | JW |

PRINT APPROVAL




CUST#: SHIM _____
 DWG#: MSD-XXX REV: 7
 BY: DAGO GARZA DATE: 12-11-12

| THK. | TOL. | P/N 316SS. | P/N 302/304 SS. | P/N STEEL. | FLATNESS. | ALLOWABLE BURR |
|------------------|----------|-------------|-----------------|------------|-----------|----------------|
| .001 | ± .00008 | 316-MSD001. | MSD001. | ————— | N/A | .0005 |
| .002 | ± .0001 | 316-MSD002. | MSD002. | ————— | N/A | .0005 |
| .003 | ± .00015 | 316-MSD003. | MSD003. | ————— | N/A | .0005 |
| .004 | ± .0002 | 316-MSD004. | MSD004. | ————— | N/A | .0005 |
| .005 | ± .00025 | 316-MSD005. | MSD005. | ————— | N/A | .0005 |
| .006 | ± .0003 | 316-MSD006. | MSD006. | ————— | N/A | .001 |
| .007 | ± .00035 | 316-MSD007. | MSD007. | ————— | N/A | .001 |
| .008 | ± .0004 | 316-MSD008. | MSD008. | ————— | N/A | .001 |
| .009 | ± .00045 | 316-MSD009. | MSD009. | ————— | N/A | .001 |
| .010 | ± .0005 | 316-MSD010. | MSD010. | ————— | N/A | .001 |
| .012 | ± .0006 | 316-MSD012. | MSD012. | ————— | N/A | .001 |
| .015 | ± .0005 | 316-MSD015. | MSD015. | ————— | N/A | .001 |
| .020 | ± .0005 | 316-MSD020. | MSD020. | ————— | N/A | .001 |
| .025 | ± .00075 | 316-MSD025. | MSD025. | ————— | N/A | .001 |
| .031 | ± .004 | 316-MSD031. | MSD031. | ————— | N/A | .002 |
| ** .050 | ± .001 | 316-MSD050. | MSD050. | ————— | ± .015 | .002 |
| ** .062 | ± .006 | 316-MSD062. | MSD062. | ————— | ± .015 | .002 |
| ** .075 | ± .002 | 316-MSD075. | MSD075. | ————— | ± .015 | .002 |
| ** .100 | ± .002 | 316-MSD100. | MSD100. | ————— | ± .015 | .002 |
| ** .125 | ± .0025 | 316-MSD125. | MSD125. | ————— | ± .015 | .002 |
| $\frac{3}{16}$ " | ± .010 | ————— | MSD-187-SS. | MSD-187-S | ± .015 | .005 |
| $\frac{1}{4}$ " | ± .012 | ————— | MSD-250-SS. | MSD-250-S | ± .015 | .005 |
| $\frac{3}{8}$ " | ± .020 | ————— | MSD-375-SS. | MSD-375-S | ± .015 | .005 |
| $\frac{1}{2}$ " | ± .025 | ————— | MSD-500-SS. | MSD-500-S | ± .015 | .005 |
| $\frac{5}{8}$ " | ± .030 | ————— | MSD-625-SS. | MSD-625-S | ± .015 | .005 |
| $\frac{3}{4}$ " | ± .035 | ————— | MSD-750-SS. | MSD-750-S | ± .015 | .005 |
| 1" | ± .050 | ————— | MSD-100-SS. | MSD-100-S | ± .015 | .005 |



NOTE:

1. "***" = For 316 material, STD gauge thickness applies (±.006")
2. "B" = If 316 Shim, Etch or Stamp "316" Here.
3. Mark shim with shim size, thickness in standard and metric.

| | | | | |
|--|------------------------|---------------|----------|---|
| UNLESS OTHERWISE SPECIFIED, ALL DIMENSIONS ARE IN INCHES, AND TOLERANCES SHALL BE: | DWG TYPE | DETAIL - PART | |  |
| | SIGNATURES | DATE | MO-DA-YR | |
| .0 = ±.030" | DMG | 6-6-07 | | CUSTOMER: Maudlin & Son Mfg. |
| .00 = ±.015" | APPRVD: CLL | 6-6-07 | | PART NUMBER: See Table |
| .000 = ±.005" | | | | DESCRIPTION: MSD Shims |
| Fractions = $\pm\frac{1}{16}$ " | | | | DWG No.: MSD-XXX |
| Angular = ±30min | | | | REVISION 7 |
| MATL: See Table | | | | SCALE: 1:1 |
| THK: See Table | THIRD ANGLE PROJECTION | | | SIZE: 1 |
| | | | | SHEET: 1 of 1 |