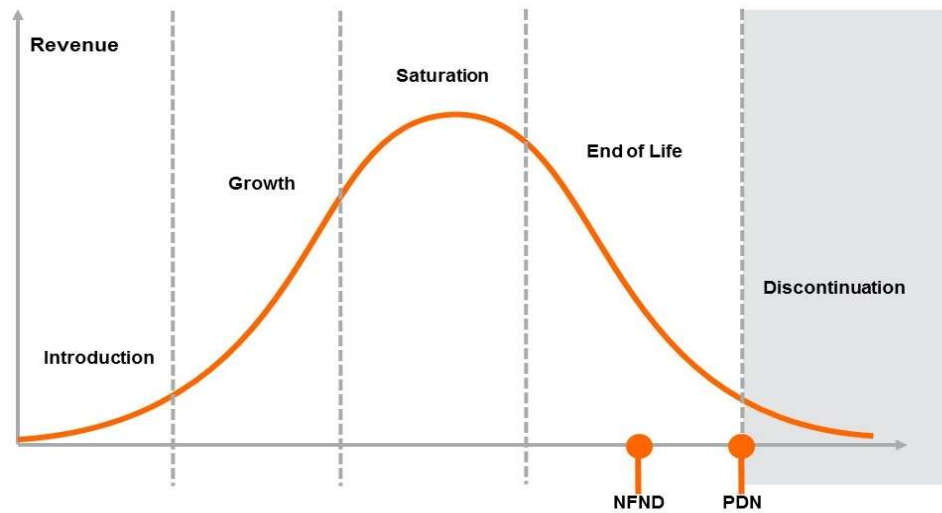


Product Or Individual Q-Code Discontinuation (acc. JEDEC J-STD-048) OS-PDN-2023-025

15 March 2023

Last order: 01 December 2024

Last delivery: 01 December 2027



Please direct your feedback to your local Sales office.

DISCONTINUED				NEW (REPLACEMENT)		
Device	Ordering Code	Brand	Reason for discontinuation	Device	Datasheet Ordering Code	Brand
Whole Device						
LO T66F-AACA-24-1-20-R33-Z	Q65111A0147	TOPLED	Chip phase-out	LY T66F-ABCA-46-3A4B-20-R33-Z	Q65112A3878	TOPLED
LO T66F-BBCA-23-1-20-R33-Z-XX	Q65111A5311	TOPLED	Chip phase-out	LY T66F-ABCA-46-3A4B-20-R33-Z	Q65112A3878	TOPLED
LO T66F-BBCB-24-3A4B-20-R33-Z	Q65112A7713	TOPLED	Chip phase-out	LY T66F-ABCA-46-3A4B-20-R33-Z	Q65112A3878	TOPLED

Notification	Device	Product Descr.	Ordering Code	Brand	Reason	Repl. Product Descr.	Repl. Ordering Code	Repl. Brand
OS-PDN-2023-025	LO T66F	LO T66F-AACA-24-1-20-R33-Z	Q65111A0147	TOPLED	Chip phase-out	LY T66F-ABCA-46-3A4B-20-R33-Z	Q65112A3878	TOPLED
OS-PDN-2023-025	LO T66F	LO T66F-BBCA-23-1-20-R33-Z-XX	Q65111A5311	TOPLED	Chip phase-out	LY T66F-ABCA-46-3A4B-20-R33-Z	Q65112A3878	TOPLED
OS-PDN-2023-025	LO T66F	LO T66F-BBCB-24-3A4B-20-R33-Z	Q65112A7713	TOPLED	Chip phase-out	LY T66F-ABCA-46-3A4B-20-R33-Z	Q65112A3878	TOPLED