

NOTES:

1. HOUSING MAT'L: LCP, GLASS FILLED, UL 94V-0, BLACK  
CONTACT MAT'L: COPPER ALLOY
2. FINISH: SELECT GOLD: 30 MI MIN  
SELECT TIN: 150 MI MIN  
BOTH OVER NICKEL: 50 MI MIN  
GOLD TO BE SPECIFIED THK IN THIS AREA
3. PRODUCT SPECIFICATION: PS-45424-001
4. PACKAGING SPECIFICATION: PK-45481-001
5. THIS MODULE INTERLOCKS WITH ALL STANDARD MOLEX POWER DOCK MODULES.
6. DATUM -A- IS THE CONNECTOR MOUNTING SURFACE.
7. THE PRIMARY SHIPPING CARTON WILL BE LABELED "COMPLIANT TO RoHS DIRECTIVE 2000/95/EC AND ELV ANNEX II OF DIRECTIVE 2000/53/EC". CARTONS WITHOUT THIS LABEL MAY CONTAIN PRODUCT WITH TIN/LEAD PLATING.
8. PC TAILS MAY BE BLUNT CUT TO LENGTH.

MATERIAL No	P	PCB THK
45501-0001	4.50	3.18
45501-0002	3.60	2.36
45501-0003	2.92	1.57

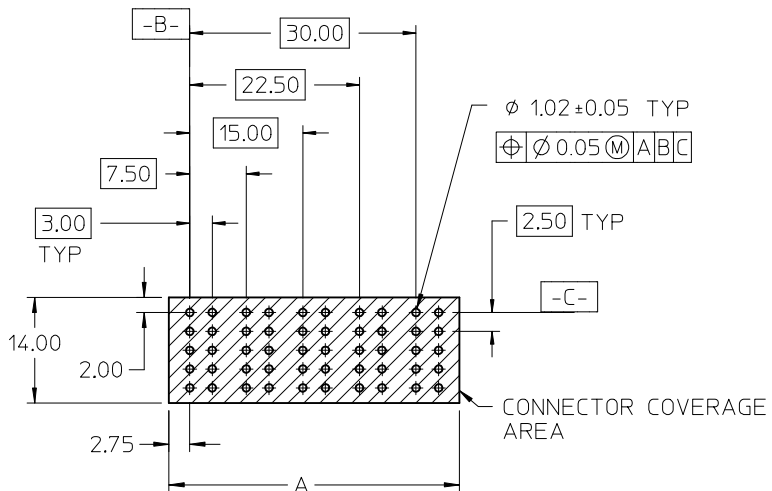
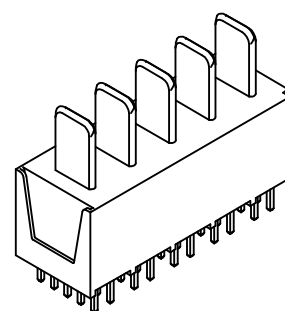
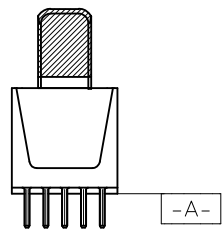
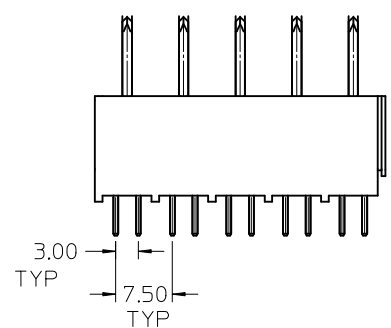
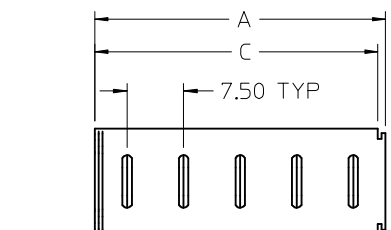
EC NO: UCP2006-0462	2005/09/02	DESCRIPTION
DRWN:KSAMIEC	2005/09/02	
CHKD:		
APPR:APATEL	2005/09/12	
REV		

GENERAL TOLERANCES (UNLESS SPECIFIED)		
	mm	INCH
4 PLACES	± ---	± ---
3 PLACES	± ---	± ---
2 PLACES	± 0.25	± ---
1 PLACE	± 0.50	± ---
ANGULAR ± 1/2°		
DRAFT WHERE APPLICABLE MUST REMAIN WITHIN DIMENSIONS		

DIMENSION STYLE	
MM ONLY	
DRAWN BY	DATE
SAMIEC	2003/02/06
CHECKED BY	DATE
MARGUL IS	2003/02/06
APPROVED BY	DATE
MARGUL IS	2003/02/06
SIZE	
A	

SCALE	DESIGN UNITS	THIRD ANGLE PROJECTION	
2:1	METRIC		
TITLE			
POWER DOCK ASSEMBLY PLUG 250V VERT 10.50 SOLDER TAIL			
molex MOLEX INCORPORATED			
DOCUMENT NO.			SHEET NO.
SD-45501-001			1 OF 2
THIS DRAWING CONTAINS INFORMATION THAT IS PROPRIETARY TO MOLEX INCORPORATED AND SHOULD NOT BE USED WITHOUT WRITTEN PERMISSION			

CKT	A	C
2	16.00	15.00
3	23.50	22.50
4	31.00	30.00
5	38.50	37.50



PCB LAYOUT: COMPONENT SIDE

CKT	MATERIAL No	P	PCB THK
2	45501-2001	4.50	3.18
3	45501-3001		
4	45501-4001	3.60	2.36
5	45501-5001		
2	45501-2002		
3	45501-3002	2.92	1.57
4	45501-4002		
5	45501-5002	2.92	1.57
2	45501-2003		
3	45501-3003		
4	45501-4003	2.92	1.57
5	45501-5003		

EC NO: UCP2006-0462	2005/09/02	DESCRIPTION
DRWN:KSAMIEC	2005/09/02	
CHKD:	2005/09/02	
APPR:APATEL	2005/09/12	
REV		

GENERAL TOLERANCES (UNLESS SPECIFIED)		
	mm	INCH
4 PLACES	± ---	± ---
3 PLACES	± ---	± ---
2 PLACES	± 0.25	± ---
1 PLACE	± 0.50	± ---
ANGULAR ± 1/2°		
DRAFT WHERE APPLICABLE MUST REMAIN WITHIN DIMENSIONS		

DIMENSION STYLE	
MM ONLY	
DRAWN BY	DATE
SAMIEC	2003/02/06
CHECKED BY	DATE
MARGULIS	2003/02/06
APPROVED BY	DATE
MARGULIS	2003/02/06
SIZE	
A	

SCALE	DESIGN UNITS	THIRD ANGLE PROJECTION
1:1	METRIC	
TITLE		
POWER DOCK ASSEMBLY PLUG 250V VERT 10.50 SOLDER TAIL		
molex MOLEX INCORPORATED		
DOCUMENT NO.		SHEET NO.
SD-45501-001		2
THIS DRAWING CONTAINS INFORMATION THAT IS PROPRIETARY TO MOLEX INCORPORATED AND SHOULD NOT BE USED WITHOUT WRITTEN PERMISSION		