

△ MODEL No. JB-15

| POLES & CIRCUITS | PLUNGER POSITION & TERMINAL NUMBERS | | TOTAL TRAVEL (P.T) |
|---------------------|-------------------------------------|------------|--------------------|
| | ※ = MOMENTARY | | |
| SPST | NORMAL | DOWN | 0.3 ±0.1mm |
| CONNECTED TERMINALS | OFF | ※ 1-3, 2-4 | |

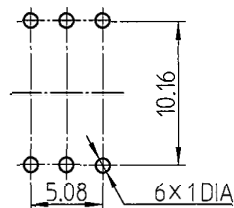
| |
|---|
| CONTACT RATING |
| RESISTIVE LOAD |
| 3VA MAX DC |
| (APPLICABLE RANGE 10mA~125mA AT 0.1V~24V) |

| | |
|---------------------------------------|---|
| CONTACT RESISTANCE | 50mΩ MAX (AT 20mV AND 10mA) |
| INSULATION RESISTANCE | 250V DC 500MΩ MIN |
| DIELECTRIC STRENGTH | 250V AC FOR 1 MINUTE OR OVER (BETWEEN CONTACTS) |
| MECHANICAL ENDURANCE | 1,000,000 CYCLES MIN |
| ELECTRICAL ENDURANCE | 1,000,000 CYCLES MIN |
| OPERATING FORCE | 2.65 ±0.69N |
| OPERATING TEMPERATURE RANGE | -25~+70°C |
| △ SOLDERING TIME & TEMPERATURE LIMITS | Manual soldering : 4 SECONDS MAX AT 390°C MAX Wave soldering : Preheat Time & Preheat Temperature : 40 SECONDS MAX AT 110°C MAX Peak Time & Peak Temperature : 6 SECONDS MAX AT 270°C MAX |

Security Class C
ISSUANCE
Aug.26,2022
- ONLY YOU CAN USE THIS DRAWING -
- DO NOT COPY -
NKK SWITCHES CO., LTD.

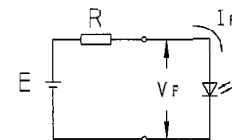
- △ * Precautions :
Protection from ESD is needed in handling, storage & transportation.
- △ * For handling :
A conductive mat or metal plate and ESD handset are required when the switches are handled.
- △ * For Storage :
ESD bag or ESD packaging is required.

TERMINAL HOLE SPACINGS
(TOP VIEW)



LED LAMP SPEC. [AT Ta=25°C]

| | | |
|---------------------------------------|--------------|--------------------|
| | | WHITE(W) |
| FORWARD PEAK CURRENT | I_{FM} | △ 20mA |
| CONTINUOUS FORWARD CURRENT (STANDARD) | I_F | △ 15mA |
| CONTINUOUS FORWARD VOLTAGE (TYPICAL) | V_F | △ 3.3V (If = 15mA) |
| REVERSE VOLTAGE (PEAK) | V_{RM} | 5V |
| CURRENT REDUCTION RATE OVER 25°C | ΔI_F | △ 0.25mA/°C |



$$R = \frac{E - V_F}{I_F}$$

| | | | | | | | | | |
|--------------|--|---------|---|------------|--------------|--------------------------|------------|---------------------------------------|------|
| △ Nov.13 '19 | LED LAMP SPEC. change Add>Note | E.S.T.I | | | | APPROVED BY: Y.Tanaka | Mar.19 '08 | SCALE 2 : 1 | |
| △ Oct.12 '12 | SOLDERING TIME & TEMPERATURE LIMITS change | T.I.Y.O | | | | CHECKED BY: Y.Kuroda | Mar.18 '08 | DIMENSIONS IN mm | |
| △ Apr.25 '12 | CONTINUOUS FORWARD VOLTAGE(TYPICAL) Modify | Y.D.Y.O | △ | Aug.25 '22 | Add JB15HBPB | | | Unless otherwise specified tolerances | |
| | | | | | | | | Dimensions range | |
| MODEL No. | JB-15HBWP2-083D △ (JB15HBPB) | | | | | CHECKED BY: | | Up to 6 | ±0.3 |
| | NKK NKK SWITCHES CO., LTD. | | | | | DRAWN BY: K.Namekata | Mar.18 '08 | Over 6 up to 30 | ±0.5 |
| | | | | | | | | Over 30 up to 50 | ±0.8 |
| | | | | | | | | Over 50 | ±1.2 |