

# EC series for PCB

Compact emergency switches for PCB •  
panel cut-out Ø 22 mm



## DISTINCTIVE FEATURES

Ultra compact emergency stop switches with Ø22 mm bushing  
PCB mounting

Front sealing : IP65

Approved according to UL 60947-5-1, IEC 60947-5-5



## ELECTRICAL SPECIFICATIONS

- Electrical function : Dual pole, Normally closed contact (NC).
- Current/voltage rating (EN60947-5-1):  
Ui : 250 V, Uimp : 2.5 kV, direct opening action  
AC15 B300, 3 A/120 V; 1.5 A/240 V, Ith: 5 A  
DC13 R300, 220 mA/125 V; 110 mA/250 V, Ith: 1 A  
20 mV to 42 VDC - 1 mA to 100 mA
- Electrical life : 50,000 lifecycle (6,050 lifecycles according EN60947-5-1),
- Dielectric strength : 2,500 Vrms 50 Hz min. between terminals



## ENVIRONMENTAL SPECIFICATIONS

- Front panel sealing : IP65
- Operating temperature : -25 °C to +70 °C (-13 °F to +158 °F)
- Storage temperature : -40 °C to +85 °C (-40 °F to +185 °F)



## GENERAL SPECIFICATIONS

- Panel thickness : 1.5 to 2.5 mm (.039 - .078) max.
- Torque : 1.5 Nm max. applied to nut



## MATERIALS

- Contacts and terminals : Gold plated
  - Bushing : PA66
  - Actuator : PA66
  - Switch block : PA66
- APEM products may be recycled at end-of-life for the re-claiming of valuable metal components.

The company reserves the right to change specifications without notice.

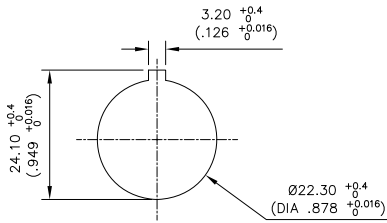


# EC series for PCB

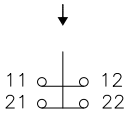
Compact emergency switches for PCB • panel cut-out Ø 22 mm



## PANEL CUT-OUT



## ELECTRICAL FUNCTION



Dual pole  
Normally closed

## AGENCY APPROVALS



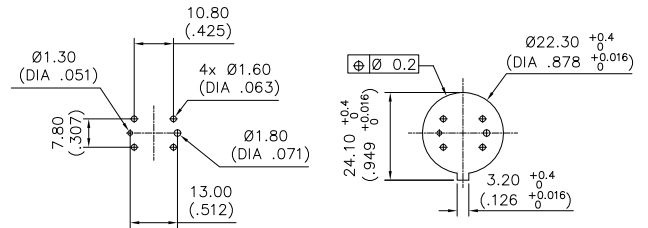
UL 60 947-5-1  
IEC 60 947.5-5  
UL 60 947.1  
CSA C22.2 N°60 947-5.1.14  
CSA C22.2 N°60 947.1.13

2014/35/EU

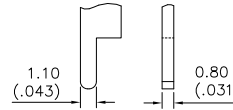


## PCB MOUNTING

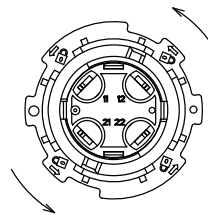
### PCB LAYOUT - TOP VIEW



### PCB PINS - CLOSE UP VIEW



### LOCKING

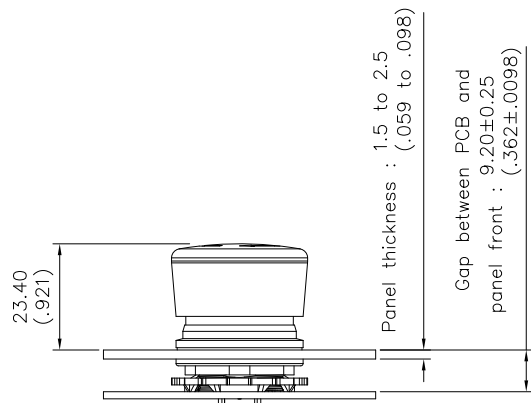


Rotate the ring  
counterclockwise to  
lock the lower and  
upper part together.

Bottom View

### ASSEMBLY

- Distance between front panel and PCB top edge =  $9.20 \pm 0.25$  mm imperative for compliance to EN60947-5-5.
- The mismatch of mechanical block and contact block must be in range of  $\varnothing 0.2$  mm.



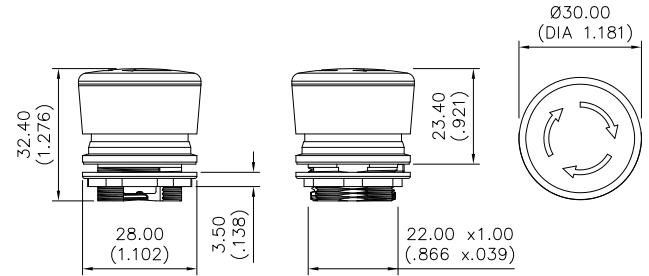
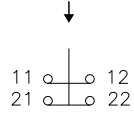
# EC series for PCB

Compact emergency switches for PCB •  
panel cut-out Ø 22 mm

## ACTUATOR



EC-AMA-H-001-A



## SWITCH BLOCK



EC-AMA-L-001-A

