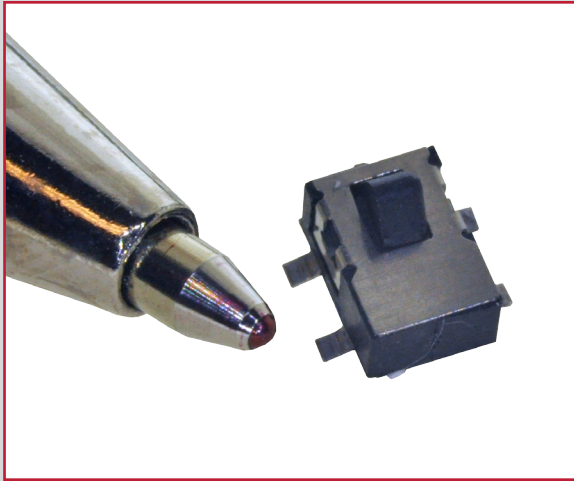
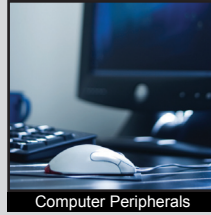


# TD1146 SERIES DETECTOR SWITCH

ANTI-VANDAL SWITCHES  
DETECTOR SWITCHES  
DIP SWITCHES  
KEYLOCK SWITCHES  
NAVIGATION SWITCHES  
PUSHBUTTON SWITCHES  
ROCKER SWITCHES  
ROTARY SWITCHES  
SLIDE SWITCHES  
SNAP ACTION SWITCHES  
TACTILE SWITCHES  
TOGGLE SWITCHES  
CAP OPTIONS



## APPLICATIONS / MARKETS



Computer Peripherals



Consumer Electronics



Testing Equipment



Handheld Devices



Gaming and Computer



Medical Equipment

# RoHS

## SPECIFICATIONS

**Contact Rating:** 1mA @5VDC  
**Travel:** 3.0mm nominal  
**Electrical Life:** 30,000 Cycles  
**Contact Resistance:** 100mΩ Max. Initial  
**Insulation Resistance:** 100M Ω @ 100VDC  
**Dielectric Strength:** 100VAC  
**Operating Temperature:** -25°C to 70°C  
**Storage Temperature:** -25°C to 70°C  
**Operating Force:** <50 gf  
**Contact Arrangement:** SPST, N.O.

## FEATURES & BENEFITS

- Ultraminiature 4.8mm x 3.5mm
- Surface mount

## PART NUMBER CONFIGURATOR

Series

TD 1146

*Specifications subject to change without notice*



E-SWITCH®

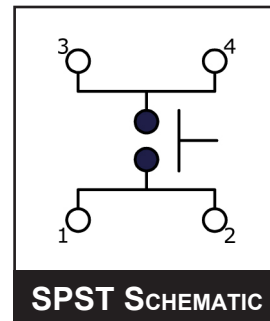
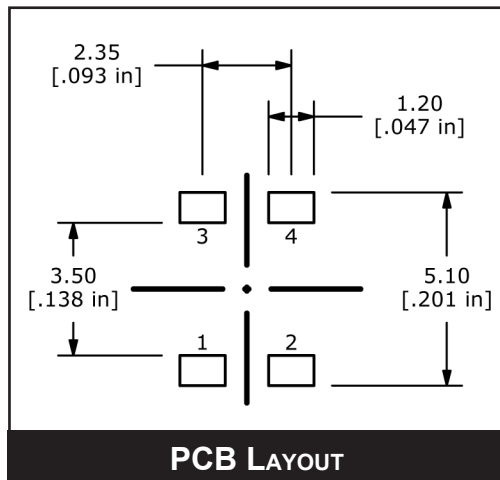
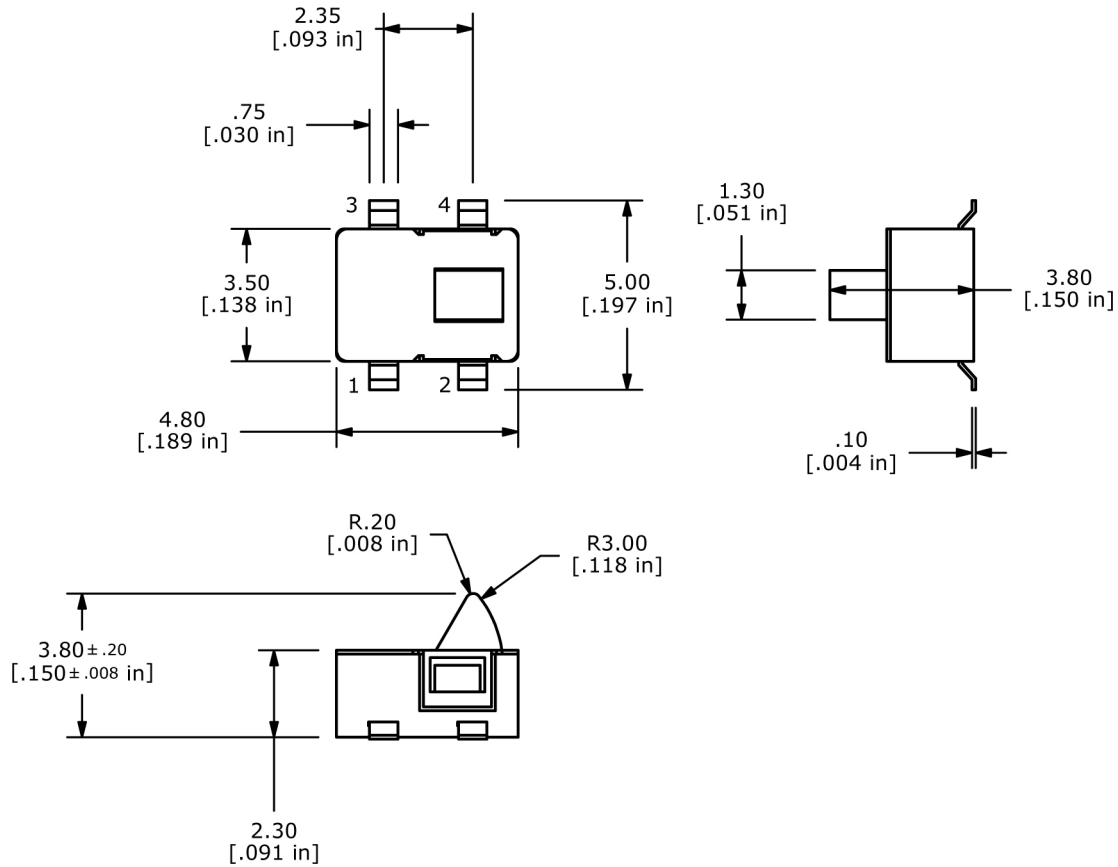
www.e-switch.com

800.867.2717

2

# TD1146 SERIES DETECTOR SWITCH

## BODY DIMENSIONS



- ANTI-VANDAL SWITCHES
- DETECTOR SWITCHES**
- DIP SWITCHES
- KEYLOCK SWITCHES
- NAVIGATION SWITCHES
- PUSHBUTTON SWITCHES
- ROCKER SWITCHES
- ROTARY SWITCHES
- SLIDE SWITCHES
- SNAP ACTION SWITCHES
- TACTILE SWITCHES
- TOGGLE SWITCHES
- CAP OPTIONS

