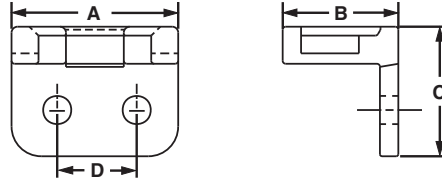


Right Angle Mounts

- Hold cable bundles away from the sharp edges of bulkheads or cabinet holes
- For indoor use only
- Can also be used to mount cable bundles adjacent to any surface
- Material: Nylon 6.6

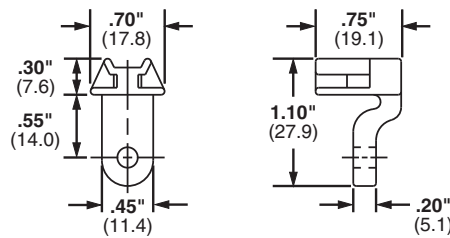


| Part Number | Used with Cable Ties‡ | Length A | | Width B | | Height C | | Hole Spacing D | | Color | Mil. Std. Part Number | Mounting Method | Std. Pkg. Qty. | Std. Ctn. Qty. |
|-------------|-----------------------|----------|------|---------|------|----------|------|----------------|------|---------|-----------------------|-------------------------------------|----------------|----------------|
| | | In. | mm | In. | mm | In. | mm | In. | mm | | | | | |
| RAMS-S3-M | M, I, S | .56 | 14.2 | .39 | 9.9 | .44 | 11.0 | .28 | 7.1 | Natural | MS3341-2-9 | #3 (M2.5) Screw or 3/32 (2.4) Rivet | 1000 | 5000 |
| RAMH-S6-D | M, I, S, HS, LH, H | 1.00 | 25.4 | .75 | 19.1 | 1.00 | 25.4 | .28 | 7.1 | | MS3341-1-9 | #6 (M3) Screw or 1/8 (3.2) Rivet | 500 | 5000 |
| RAMH-S10-D | M, I, S, HS, LH, H | 1.00 | 25.4 | .75 | 19.1 | 1.00 | 25.4 | .50 | 12.7 | | — | #10 (M5) Screw or 3/16 (4.7) Rivet | 500 | 5000 |

‡Cable tie cross section sizes: M = Miniature, I = Intermediate, S = Standard, HS = Heavy Standard, LH = Light-Heavy and H = Heavy.

Lightening Hole Mounts

- Secure cable bundles that run through bulkhead lightening holes
- For indoor use only
- Protect cable bundles from sharp edges
- Material: Nylon 6.6



| Part Number | Used with Cable Ties‡ | Color | Mil. Std. Part Number | Mounting Method | Std. Pkg. Qty. | Std. Ctn. Qty. |
|-------------|-----------------------|---------|-----------------------|------------------------------------|----------------|----------------|
| LHMS-S5-D | M, I, S | Natural | — | #5 (M3) Screw or 1/8 (3.2) Rivet | 500 | 2500 |
| LHMS-S6-D | | | MS3340-1-9 | #6 (M3) Screw or 9/64 (3.5) Rivet | 500 | 2500 |
| LHMS-S10-D | | | — | #10 (M5) Screw or 3/16 (4.7) Rivet | 500 | 2500 |

‡Cable tie cross section sizes: M = Miniature, I = Intermediate, and S = Standard.

A.
System
Overview

B1.
Cable Ties

B2.
Cable
Accessories

B3.
Stainless
Steel Ties

C1.
Wiring
Duct

C2.
Surface
Raceway

C3.
Abrasion
Protection

C4.
Cable
Management

D1.
Terminals

D2.
Power
Connectors

D3.
Grounding
Connectors

E1.
Labeling
Systems

E2.
Labels

E3.
Pre-Printed
& Write-On
Markers

E4.
Permanent
Identification

E5.
Lockout/
Tagout/
& Safety
Solutions

F.
Index