

| PART NUMBER | REVISION | DESCRIPTION | FEED TYPE |
|-------------|----------|----------------------------------|------------|
| 2151142-1 | F | FINE CRIMP HEIGHT ADJUST | MECHANICAL |
| 2151142-2 | G | FINE CRIMP HEIGHT ADJUST | PNEUMATIC |
| 7-2151142-1 | F | MECHANICAL AND CRIMP TOOLING KIT | MECHANICAL |
| 7-2151142-2 | G | PNEUMATIC AND CRIMP TOOLING KIT | PNEUMATIC |
| 7-2151142-7 | A | CRIMP TOOLING KIT | - |

ATLANTIC VERSION TERMINATOR INTERFACE ADAPTER

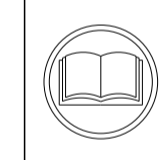


| APPLICATOR DATA | | |
|-----------------|----------------|------|
| CRIMP | SIZE | TYPE |
| WIRE | 1.07 mm [.042] | F |
| INSUL | 1.78 mm [.070] | F |

APPLICATOR INSTRUCTIONS
408-35042

| TERMINAL DATA: TE TERMINAL | | TE CRIMP SPECIFICATION | |
|---|-----------|------------------------------|------------|
| TERMINAL NAME: CRIMP SNAP-IN, MICRO MATE-N-LOCK | | | |
| WIRE STRIP LENGTH | | INSULATION DIAMETER RANGE | |
| 2.90-3.53 mm [.114-.139 IN] | | Ø0.89-1.52 mm [.035-.060 IN] | |
| TERMINAL APPLICATION SPECIFICATION | 114-13000 | | |
| TERMINALS APPLIED | | | |
| TERMINAL | TERMINAL | TERMINAL | TERMINAL |
| 794607-1 | 794607-2 | 794607-3 | 1-794607-1 |
| 1-794607-2 | | | |

| WIRE SIZE | CRIMP HEIGHT mm [INCH] | CRIMP HEIGHT REFERENCE SETTING |
|-----------|----------------------------|--------------------------------|
| 26 AWG | 0.61+/-0.05 [.024+/- .002] | 9.6 |
| 28 AWG | 0.56+/-0.05 [.022+/- .002] | 10.1 |
| 30 AWG | 0.51+/-0.05 [.020+/- .002] | 10.7 |



- 1 RECOMMENDED SPARE PARTS
- 2 REFER TO SUPPLIED INSTRUCTION SHEET FOR CLEANING, LUBRICATION AND STORAGE OF APPLICATOR.
- 3 APPLY PART NUMBER 2-23419-6 LOCTITE TO THREADS OF ITEM 242.
- 4 CRIMP HEIGHT REFERENCE SETTING WAS THE SETTING USED WHEN THE APPLICATOR WAS QUALIFIED AT THE FACTORY. ADJUSTMENT MAY BE NECESSARY WHEN RUNNING APPLICATOR IN THE FIELD.
- 5. UNLESS SPECIFIED OTHERWISE TORQUE VALUES SHALL BE USED PER DOCUMENT, 101-35000.

***WARNING**
ON INSTALLATION, SET WIRE DISC TO CRIMP HEIGHT REFERENCE SETTING FOR LARGEST WIRE SIZE. CRIMP HEIGHT REFERENCE SETTINGS GREATER THAN THE VALUE SHOWN MAY CAUSE DAMAGE TO THE CRIMP TOOLING, REFER TO THE INSTRUCTION SHEET FOR PROPER SETUP AND ADJUSTMENTS.

ATLANTIC VERSION
Shown on sheets 1 of 4 & 2 of 4
(Pacific version shown on sheets 3 of 4 & 4 of 4)

| LOC | DIST | REVISIONS | | | | | |
|-----|------|-----------|-----|---------------|-----------|-----|------|
| | | P | LTN | DESCRIPTION | DATE | OWN | APVD |
| A | 66 | D | | ECR-17-016798 | 15NOV2017 | FL | GB |
| | | E | | ECR-18-014300 | 10SEP2018 | FZ | KZ |
| | | F | | ECR-18-014693 | 17SEP2018 | KH | GB |
| | | G | | ECR-19-009039 | 14JUN2019 | TB | TE |

| | | | | | | | | |
|---|---|-----|-----|-----|-----|-------------|-------------------------------------|-----|
| 1 | - | 1 | 1 | 1 | 1 | 2280441-1 | INSERT, SHEAR | 282 |
| | - | 1 | - | 1 | - | 2119641-1 | FEED CAM, AIR FEED | 248 |
| | - | 1 | 1 | 1 | 1 | 2119082-9 | CAM, SNAIL, INSULATION ADJUSTMENT | 244 |
| | - | 1 | 1 | 1 | 1 | 2079764-1 | WASHER, WAVE SPRING, CREST-TO-CREST | 243 |
| 3 | - | 1 | 1 | 1 | 1 | 2119083-1 | RETAINER, INSULATION DIAL | 242 |
| | - | 2 | 2 | 2 | 2 | 7-18023-7 | SCR, SKT HD CAP M3 X 4.0 | 241 |
| | - | 1 | - | 1 | - | 2119580-1 | MECHANICAL FEED ASSEMBLY | 239 |
| | - | 1 | - | 1 | - | 2844940-1 | AIR FEED MODULE | 238 |
| | - | REF | REF | REF | REF | 994970-2 | COUNTER, MAGNETIC | 164 |
| | - | 1 | 1 | 1 | 1 | 2168083-6 | SCR, SKT HD CAP, RoHS, M5 X 65 | 124 |
| | - | 2 | 2 | 2 | 2 | 1-18028-2 | WASHER, FLAT, REG M4 | 119 |
| | - | 1 | 1 | 1 | 1 | 2844908-1 | SCREW, LOCKING | 99 |
| | - | 1 | 1 | 1 | 1 | 2844907-1 | POST, LOCKING | 98 |
| | - | 1 | 1 | 1 | 1 | 1-22281-8 | SPRING, COMPRESSION | 96 |
| | - | 1 | 1 | 1 | 1 | 980371-4 | SCR, SKT HD SHLDR 5.0 DIA X 6.0 | 83 |
| | - | 1 | 1 | 1 | 1 | 455888-5 | SPACER, CRIMPER | 82 |
| | - | 1 | 1 | 1 | 1 | 1803607-3 | DOCUMENTATION PACKAGE | 71 |
| | - | 1 | 1 | 1 | 1 | 2119740-1 | TAG, IDENTIFICATION | 67 |
| | - | 2 | 2 | 2 | 2 | 2168078-1 | SCREW, DRIVE, RH, RoHS, 2 x .188 | 66 |
| | - | 4 | 4 | 4 | 4 | 2168083-1 | SCR, SKT HD CAP, RoHS, M3 X 8.0 | 65 |
| | - | 2 | 2 | 2 | 2 | 2-18032-5 | SCR, SET, FLT PNT, M5 X 20.0 | 61 |
| | - | 1 | 1 | 1 | 1 | 2168083-2 | SCR, SKT HD CAP, RoHS, M4 X 8.0 | 60 |
| | - | 1 | 1 | 1 | 1 | 5-18022-5 | SCR, HEX HD CAP, M4 X 6.0 | 59 |
| | - | 1 | 1 | 1 | 1 | 1338683-1 | FEED PAWL | 56 |
| | - | 4 | 4 | 4 | 4 | 2168083-3 | SCR, SKT HD CAP, RoHS, M4 X 12.0 | 54 |
| | - | 2 | 2 | 2 | 2 | 1-18023-3 | SCR, SKT HD CAP M4 X 16.0 | 53 |
| | - | 1 | 2 | 1 | 2 | 18023-9 | SCR, SKT HD CAP M4 X 6.0 | 49 |
| | - | 1 | 1 | - | 1 | 2119652-1 | FEED CAM, PRE FEED | 48 |
| | - | 1 | 1 | - | 1 | 2119653-1 | FEED CAM, POST FEED | 47 |
| | - | 1 | 1 | 1 | 1 | 1803583-9 | APPLICATOR BASIC ASSEMBLY, SF | 46 |
| | - | 1 | 1 | 1 | 1 | 1803515-1 | RAM ASSEMBLY, SF ATLANTIC | 44 |
| | - | 1 | 1 | 1 | 1 | 1803602-1 | SCR, BHSC, RoHS (M8 X 25) | 41 |
| | - | 1 | 1 | 1 | 1 | 2305692-1 | PLATE, REAR STRIP GUIDE | 29 |
| | - | 1 | 1 | 1 | 1 | 1-455888-0 | SPACER, CRIMPER | 28 |
| | - | 2 | 2 | 2 | 2 | 22283-1 | SPRING, COMPRESSION | 27 |
| | - | 1 | 1 | 1 | 1 | 356835-1 | LEVER, DRAG RELEASE | 26 |
| | - | 1 | 1 | 1 | 1 | 240792-1 | DRAG, TERMINAL | 25 |
| | - | 1 | 1 | 1 | 1 | 189124-7 | GUIDE, FRONT STRIP | 24 |
| | - | 1 | 1 | 1 | 1 | 690438-1 | FRONT STRIP GUIDE | 23 |
| | - | 1 | 1 | 1 | 1 | 2168083-2 | SCR, SKT HD CAP, RoHS, M4 X 8.0 | 21 |
| | - | 1 | 1 | 1 | 1 | 1-18028-2 | WASHER, FLAT, REG M4 | 20 |
| | - | 1 | 1 | 1 | 1 | 2119533-1 | STRIPPER, SIDE FEED | 19 |
| | - | 1 | 1 | 1 | 1 | 2-690518-4 | HOLD DOWN, TERMINAL | 18 |
| 1 | - | 1 | 1 | 1 | 1 | 690463-1 | FLOATING SHEAR, REAR | 17 |
| | - | 2 | 2 | 2 | 2 | 1-2168083-1 | SCR, SKT HD CAP, RoHS, M3 X 6 | 16 |
| | - | 1 | 1 | 1 | 1 | 690464-1 | SHEAR PLATE, REAR | 15 |
| 1 | - | 1 | 1 | 1 | 1 | 2119862-1 | SHEAR HOLDER, REAR | 14 |
| 1 | - | 1 | 1 | 1 | 1 | 2119806-1 | INSERT, SHEAR | 13 |
| | - | 2 | 2 | 2 | 2 | 3-22280-3 | SPRING, COMPRESSION | 12 |
| | - | 2 | 2 | 2 | 2 | 1-356885-4 | STOP, SHEAR | 11 |
| 1 | - | 1 | 1 | 1 | 1 | 2119805-1 | SHEAR HOLDER, FRONT | 10 |
| 1 | - | 1 | 1 | 1 | 1 | 1803095-1 | FLOATING SHEAR, FRONT | 9 |
| 1 | 1 | 2 | 2 | 1 | 1 | 5-1333200-0 | ANVIL, COMBINATION | 8 |
| | - | 1 | 1 | 1 | 1 | 240641-3 | SPACER | 7 |
| | - | 1 | 1 | 1 | 1 | 690468-2 | DEPRESSOR SHEAR, REAR | 6 |
| | - | 1 | 1 | 1 | 1 | 2119757-8 | DEPRESSOR, SHEAR | 5 |
| | - | 1 | 1 | 1 | 1 | 2-238011-0 | BLOCK, CRIMPER SPACER | 4 |
| 1 | 1 | 2 | 2 | 1 | 1 | 1-2119582-2 | CRIMPER, INSULATION F PREMIUM | 3 |
| | - | 1 | 1 | 1 | 1 | 455888-5 | SPACER, CRIMPER | 2 |
| 1 | 1 | 2 | 2 | 1 | 1 | 456401-4 | CRIMPER, WIRE .042 F PREMIUM | 1 |

| DIMENSIONS: | | TOLERANCES UNLESS OTHERWISE SPECIFIED: | | MATERIAL: | | FINISH: | |
|-------------|---------|--|---------|-----------|---------|---------|--------|
| mm | 0 PLC ± | 1 PLC ± | 2 PLC ± | 3 PLC ± | 4 PLC ± | ANGLES | FINISH |
| | | | | | | | |

| OWN | CHK | APVD | DATE | NAME | SIZE | CAGE CODE | DRAWING NO | RESTRICTED TO |
|--------|-----------|-------|-----------|-----------|------|-----------|------------|--|
| Y. YIN | G. BAILEY | S. XI | 19OCT2011 | G. BAILEY | A1 | 00779 | 2151142 | Customer Accessible Production Drawing |

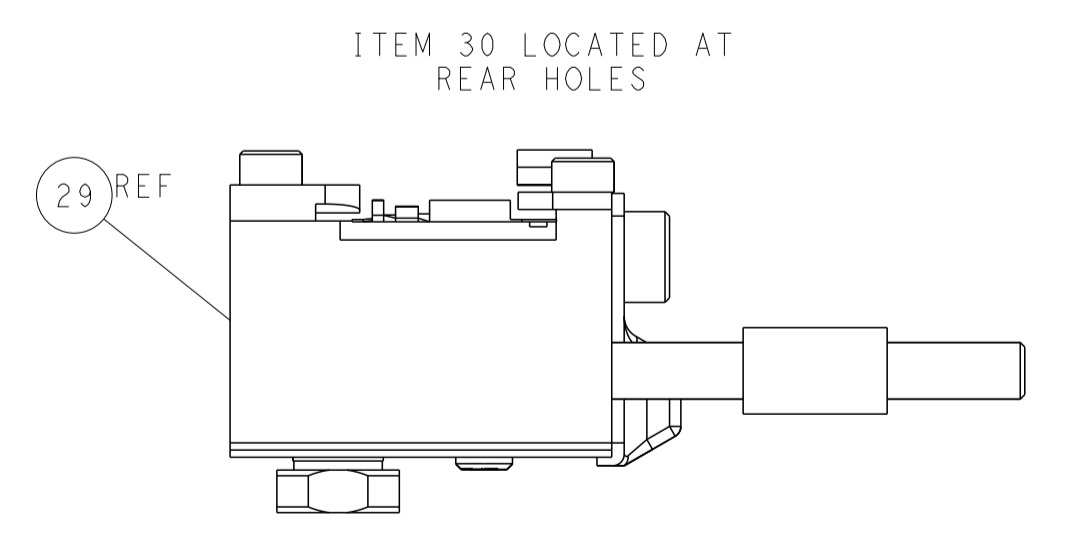
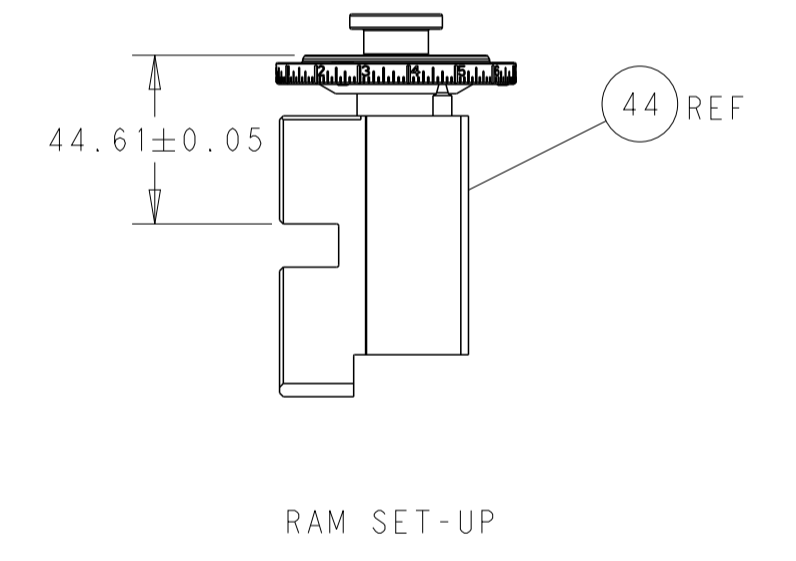
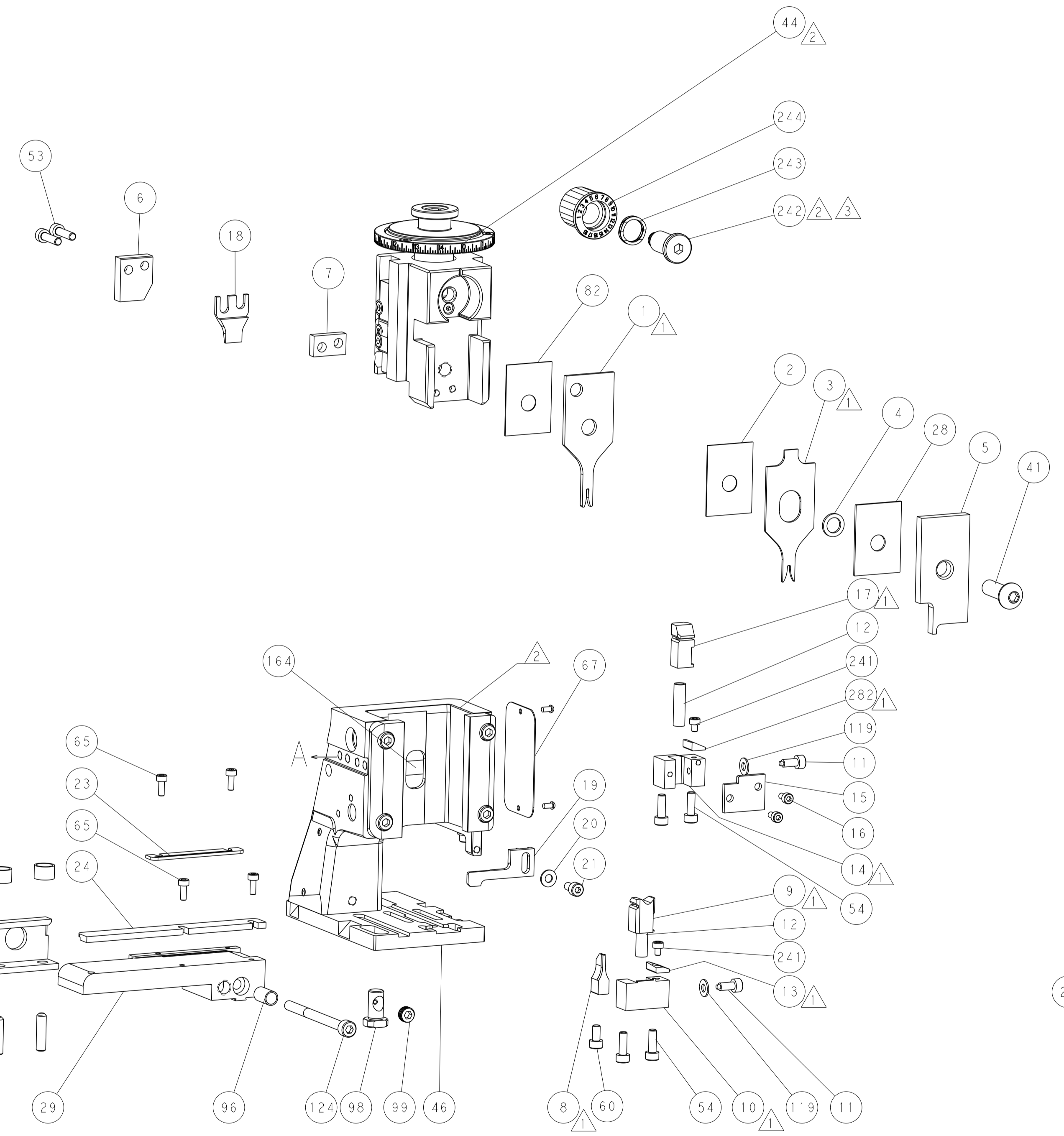
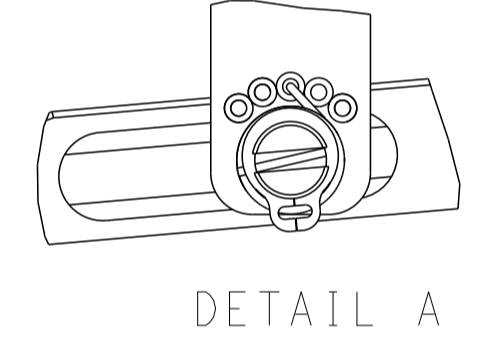
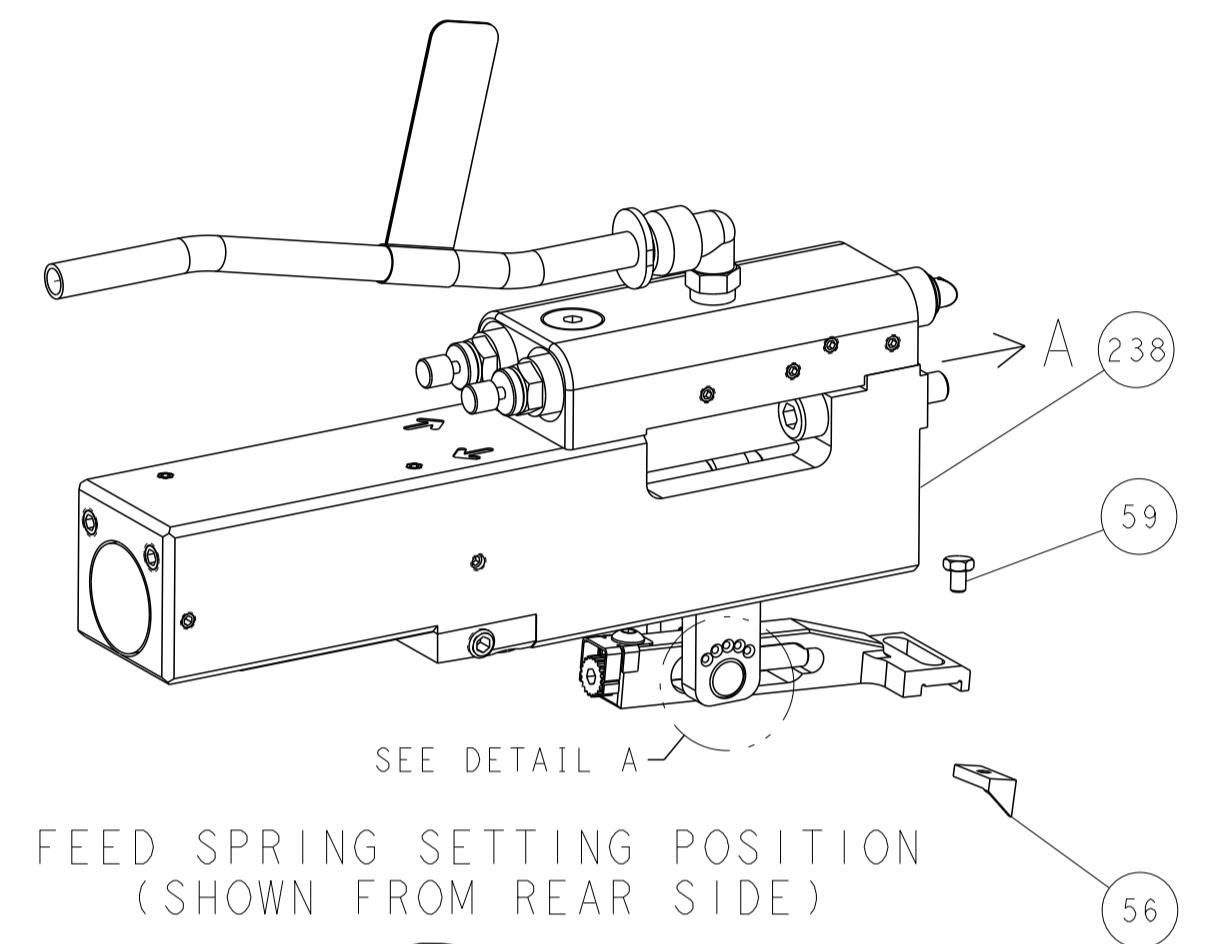
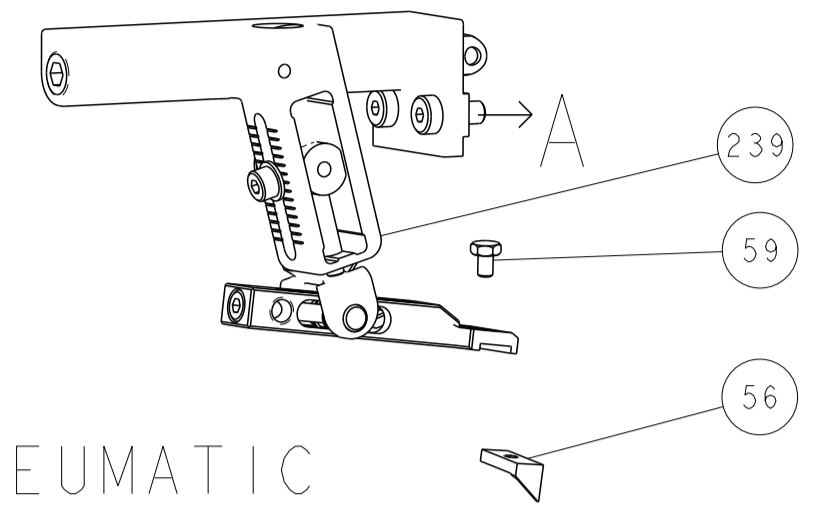
STE TE Connectivity
Harrisburg, PA 17105-3608

Ocean Side Feed
Applicator

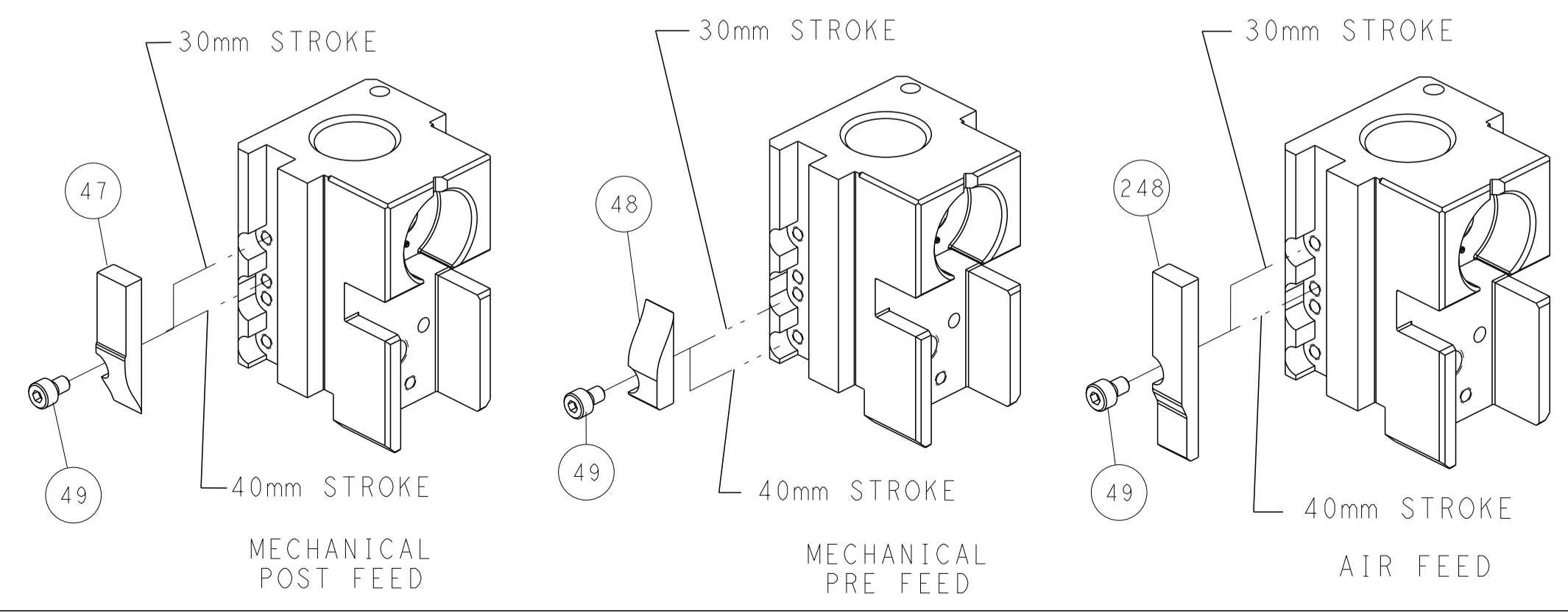
SCALE 1:2 SHEET 1 OF 4 REV G

| LOC | DIST | REVISIONS | | | | | |
|-----|------|-----------|-----|-------------|------|-----|------|
| A | 66 | P | LTN | DESCRIPTION | DATE | DWN | APVD |
| | | - | | SEE SHEET 1 | - | - | - |
| | | | | | | | |
| | | | | | | | |

FEED TYPE MECHANICAL



CAM POSITIONS



ATLANTIC VERSION
 Shown on sheets 1 of 4 & 2 of 4
 (Pacific version shown on sheets 3 of 4 & 4 of 4)

| | | | | | | | |
|-------------|---------|--|---------|-------------------------|---------|--|--|
| DIMENSIONS: | | TOLERANCES UNLESS OTHERWISE SPECIFIED: | | DWN Y. YIN 19OCT2011 | | TE Connectivity | |
| mm | 0 PLC ± | 1 PLC ± | 2 PLC ± | 3 PLC ± | 4 PLC ± | Harrisburg, PA 17105-3608 | |
| MATERIAL: | | FINISH: | | CHK G. BAILEY 19OCT2011 | | NAME Ocean Side Feed Applicator | |
| | | | | S. XI 19OCT2011 | | SIZE CAGE CODE DRAWING NO RESTRICTED TO | |
| | | | | APVD | | A1 00779 ©=2151142 | |
| | | | | PRODUCT SPEC | | SCALE 1:2 SHEET 2 OF 4 REV G | |
| | | | | APPLICATION SPEC | | Customer Accessible Production Drawing | |
| | | | | WEIGHT | | SHEETS 3 & 4 ARE NOT REQUIRED FOR ATLANTIC VERSION | |

| PART NUMBER | REVISION | DESCRIPTION | FEED TYPE |
|-------------|----------|--------------------------|------------|
| 2-2151142-1 | F | FINE CRIMP HEIGHT ADJUST | MECHANICAL |
| 2-2151142-2 | G | FINE CRIMP HEIGHT ADJUST | PNEUMATIC |
| 7-2151142-7 | A | CRIMP TOOLING KIT | - |

PACIFIC VERSION TERMINATOR
 INTERFACE ADAPTER



| APPLICATOR DATA | | |
|--------------------------------------|----------------|------|
| CRIMP | SIZE | TYPE |
| WIRE | 1.07 mm [.042] | F |
| INSUL | 1.78 mm [.070] | F |
| APPLICATOR INSTRUCTIONS 408-35042 | | |

| TERMINAL DATA: TE TERMINAL | | TE CRIMP SPECIFICATION | |
|---|-----------|-------------------------------|------------|
| TERMINAL NAME: CRIMP SNAP-IN, MICRO MATE-N-LOCK | | | |
| WIRE STRIP LENGTH | | INSULATION DIAMETER RANGE | |
| 2.90-3.53 mm [1.14-.139 IN] | | Ø0.89-1.52 mm [0.035-.060 IN] | |
| TERMINAL APPLICATION SPECIFICATION | 114-13000 | | |
| TERMINALS APPLIED | | | |
| TERMINAL | TERMINAL | TERMINAL | TERMINAL |
| 794607-1 | 794607-2 | 794607-3 | 1-794607-1 |
| 1-794607-2 | | | |

| WIRE SIZE | CRIMP HEIGHT mm [INCH] | CRIMP HEIGHT REFERENCE SETTING |
|-----------|--------------------------------|--------------------------------|
| 26 AWG | 0.61 +/- 0.05 [0.024 +/- .002] | 9.6 |
| 28 AWG | 0.56 +/- 0.05 [0.022 +/- .002] | 10.1 |
| 30 AWG | 0.51 +/- 0.05 [0.020 +/- .002] | 10.7 |

- RECOMMENDED SPARE PARTS
- REFER TO SUPPLIED INSTRUCTION SHEET FOR CLEANING, LUBRICATION AND STORAGE OF APPLICATOR.
- APPLY PART NUMBER 2-23419-6 LOCTITE TO THREADS OF ITEM 242.
- CRIMP HEIGHT REFERENCE SETTING WAS THE SETTING USED WHEN THE APPLICATOR WAS QUALIFIED AT THE FACTORY. ADJUSTMENT MAY BE NECESSARY WHEN RUNNING APPLICATOR IN THE FIELD.
- 5. UNLESS SPECIFIED OTHERWISE TORQUE VALUES SHALL BE USED PER DOCUMENT, 101-35000.

***WARNING**
 ON INSTALLATION, SET WIRE DISC TO CRIMP HEIGHT REFERENCE SETTING FOR LARGEST WIRE SIZE. CRIMP HEIGHT REFERENCE SETTINGS GREATER THAN THE VALUE SHOWN MAY CAUSE DAMAGE TO THE CRIMP TOOLING, REFER TO THE INSTRUCTION SHEET FOR PROPER SETUP AND ADJUSTMENTS.

PACIFIC VERSION
 Shown on sheets 3 of 4 & 4 of 4
 (Atlantic version shown on sheets 1 of 4 & 2 of 4)

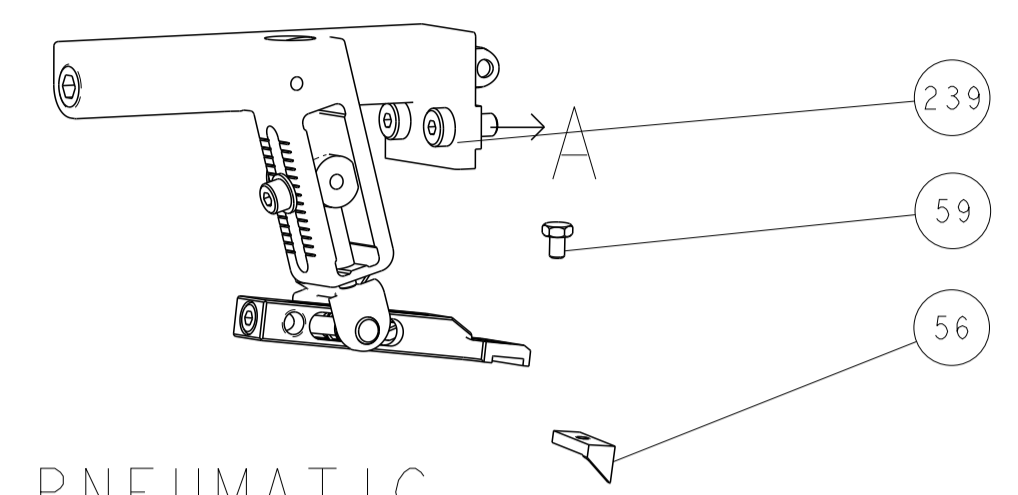
| LOC | DIST | REVISIONS | | | | | |
|-----|------|-----------|-----|-------------|------|-----|------|
| A | 66 | P | LTN | DESCRIPTION | DATE | OWN | APVD |
| - | - | - | - | SEE SHEET 1 | - | - | - |

| | | | | | | | |
|---|-----|-----|---|-------------|-------------------------------------|--|-----|
| | - | 1 | 1 | 2280441-1 | INSERT, SHEAR | | 282 |
| - | 1 | 1 | | 2119082-9 | CAM, SNAIL, INSULATION ADJUSTMENT | | 244 |
| - | 1 | 1 | | 2079764-1 | WASHER, WAVE SPRING, CREST-TO-CREST | | 243 |
| | - | 1 | 1 | 2119083-1 | RETAINER, INSULATION DIAL | | 242 |
| - | 2 | 2 | | 7-18023-7 | SCR, SKT HD CAP M3 X 4.0 | | 241 |
| - | - | 1 | | 2119580-1 | MECHANICAL FEED ASSEMBLY | | 239 |
| - | - | 1 | | 2844940-1 | AIR FEED MODULE | | 238 |
| - | REF | REF | | 994970-2 | COUNTER, MAGNETIC | | 164 |
| - | 1 | - | | 2119641-2 | FEED CAM, AIR FEED | | 151 |
| - | 1 | 1 | | 2168083-8 | SCR, SKT HD CAP, RoHS, M4 X 16 | | 144 |
| - | 4 | 4 | | 2168083-9 | SCR, SKT HD CAP, RoHS, M4 X 20 | | 143 |
| - | - | 1 | | 2119653-2 | FEED CAM, POST FEED | | 142 |
| - | 1 | 1 | | 1-1803583-0 | APPLICATOR BASIC ASSEMBLY, SF | | 141 |
| - | 1 | 1 | | 1803516-1 | RAM ASSEMBLY, SF PACIFIC | | 140 |
| - | 1 | 1 | | 2168083-6 | SCR, SKT HD CAP, RoHS, M5 X 65 | | 124 |
| - | 2 | 2 | | 1-18028-2 | WASHER, FLAT, REG M4 | | 119 |
| - | 1 | 1 | | 2844908-1 | SCREW, LOCKING | | 99 |
| - | 1 | 1 | | 2844907-1 | POST, LOCKING | | 98 |
| - | 1 | 1 | | 1-22281-8 | SPRING, COMPRESSION | | 96 |
| - | 1 | 1 | | 980371-4 | SCR, SKT HD SHLDR 5.0 DIA X 6.0 | | 83 |
| - | 1 | 1 | | 455888-5 | SPACER, CRIMPER | | 82 |
| - | 1 | 1 | | 1803607-3 | DOCUMENTATION PACKAGE | | 71 |
| - | 1 | 1 | | 2119740-1 | TAG, IDENTIFICATION | | 67 |
| - | 2 | 2 | | 2168078-1 | SCREW, DRIVE, RH, RoHS, 2 x .188 | | 66 |
| - | 4 | 4 | | 2168083-1 | SCR, SKT HD CAP, RoHS, M3 X 8.0 | | 65 |
| - | 2 | 2 | | 2-18032-5 | SCR, SET, FLT PNT, M5 X 20.0 | | 61 |
| - | 1 | 1 | | 5-18022-5 | SCR, HEX HD CAP, M4 X 6.0 | | 59 |
| - | 1 | 1 | | 1338683-1 | FEED PAWL | | 56 |
| - | 2 | 2 | | 1-18023-3 | SCR, SKT HD CAP M4 X 16.0 | | 53 |
| - | 1 | 2 | | 18023-9 | SCR, SKT HD CAP M4 X 6.0 | | 49 |
| - | - | 1 | | 2119652-1 | FEED CAM, PRE FEED | | 48 |
| - | 1 | 1 | | 1803602-1 | SCR, BHSC, RoHS (M8 X 25) | | 41 |
| - | 1 | 1 | | 2305692-1 | PLATE, REAR STRIP GUIDE | | 29 |
| - | 1 | 1 | | 1-455888-0 | SPACER, CRIMPER | | 28 |
| - | 2 | 2 | | 22283-1 | SPRING, COMPRESSION | | 27 |
| - | 1 | 1 | | 356835-1 | LEVER, DRAG RELEASE | | 26 |
| - | 1 | 1 | | 240792-1 | DRAG, TERMINAL | | 25 |
| - | 1 | 1 | | 189124-7 | GUIDE, FRONT STRIP | | 24 |
| - | 1 | 1 | | 690438-1 | FRONT STRIP GUIDE | | 23 |
| - | 1 | 1 | | 2168083-2 | SCR, SKT HD CAP, RoHS, M4 X 8.0 | | 21 |
| - | 1 | 1 | | 1-18028-2 | WASHER, FLAT, REG M4 | | 20 |
| - | 1 | 1 | | 2119533-1 | STRIPPER, SIDE FEED | | 19 |
| - | 1 | 1 | | 2-690518-4 | HOLD DOWN, TERMINAL | | 18 |
| | - | 1 | 1 | 690463-1 | FLOATING SHEAR, REAR | | 17 |
| - | 2 | 2 | | 1-2168083-1 | SCR, SKT HD CAP, RoHS, M3 X 6 | | 16 |
| - | 1 | 1 | | 690464-1 | SHEAR PLATE, REAR | | 15 |
| | - | 1 | 1 | 2119862-1 | SHEAR HOLDER, REAR | | 14 |
| | - | 1 | 1 | 2119806-1 | INSERT, SHEAR | | 13 |
| - | 2 | 2 | | 3-22280-3 | SPRING, COMPRESSION | | 12 |
| - | 2 | 2 | | 1-356885-4 | STOP, SHEAR | | 11 |
| | - | 1 | 1 | 2119805-1 | SHEAR HOLDER, FRONT | | 10 |
| | - | 1 | 1 | 1803095-1 | FLOATING SHEAR, FRONT | | 9 |
| | 1 | 1 | 1 | 5-1333200-0 | ANVIL, COMBINATION | | 8 |
| - | 1 | 1 | | 240641-3 | SPACER | | 7 |
| - | 1 | 1 | | 690468-2 | DEPRESSOR SHEAR, REAR | | 6 |
| - | 1 | 1 | | 2119757-8 | DEPRESSOR, SHEAR | | 5 |
| - | 1 | 1 | | 2-238011-0 | BLOCK, CRIMPER SPACER | | 4 |
| | 1 | 1 | 1 | 1-2119582-2 | CRIMPER, INSULATION F PREMIUM | | 3 |
| - | 1 | 1 | | 455888-5 | SPACER, CRIMPER | | 2 |
| | 1 | 1 | 1 | 456401-4 | CRIMPER, WIRE .042 F PREMIUM | | 1 |

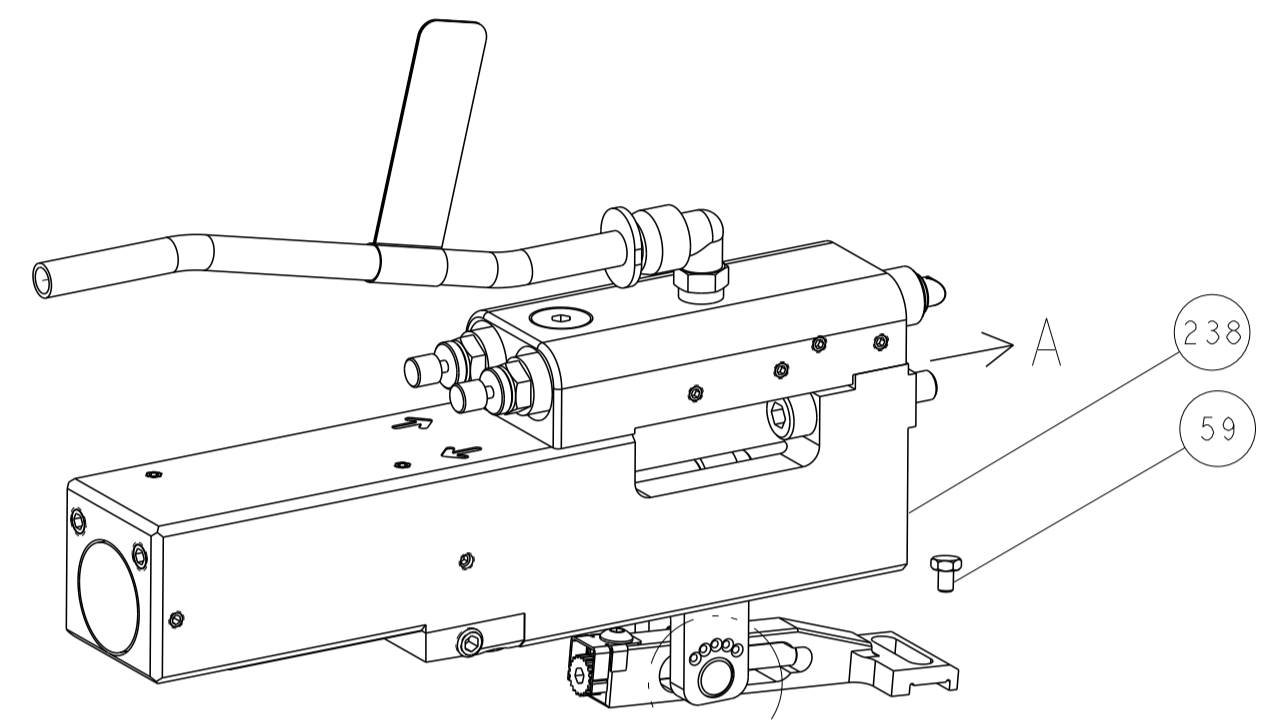
| DIMENSIONS: | | TOLERANCES UNLESS OTHERWISE SPECIFIED: | | DWG | | NAME | |
|-------------|---------|--|----------|-----------|-----------|--|--------|
| mm | 0 PLC ± | 1 PLC ± | 2 PLC ± | Y. YIN | 19OCT2011 | TE Connectivity Harrisburg, PA 17105-3608 | |
| | 3 PLC ± | 4 PLC ± | ANGLES ± | G. BAILEY | 19OCT2011 | Ocean Side Feed Applicator | |
| MATERIAL | FINISH | FINISH | FINISH | S. XI | 19OCT2011 | Customer Accessible Production Drawing | |
| | | | | APVD | | SCALE | 1:2 |
| | | | | WEIGHT | | SHEET | 3 OF 4 |
| | | | | | | REV | G |

| LOC | | DIST | | REVISIONS | | | |
|-----|-----|-------------|------|-----------|------|--|--|
| P | LTN | DESCRIPTION | DATE | DWN | APVD | | |
| A | 66 | SEE SHEET 1 | | | | | |

FEED TYPE MECHANICAL

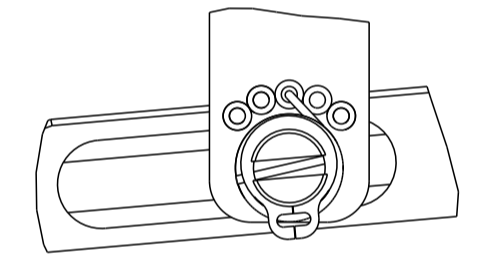


PNEUMATIC

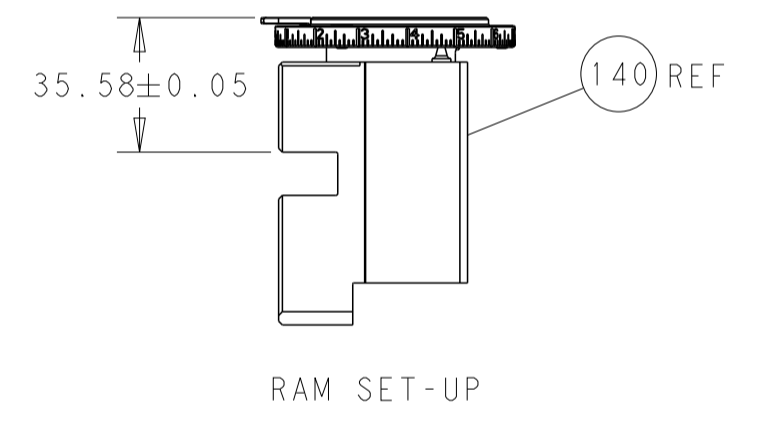
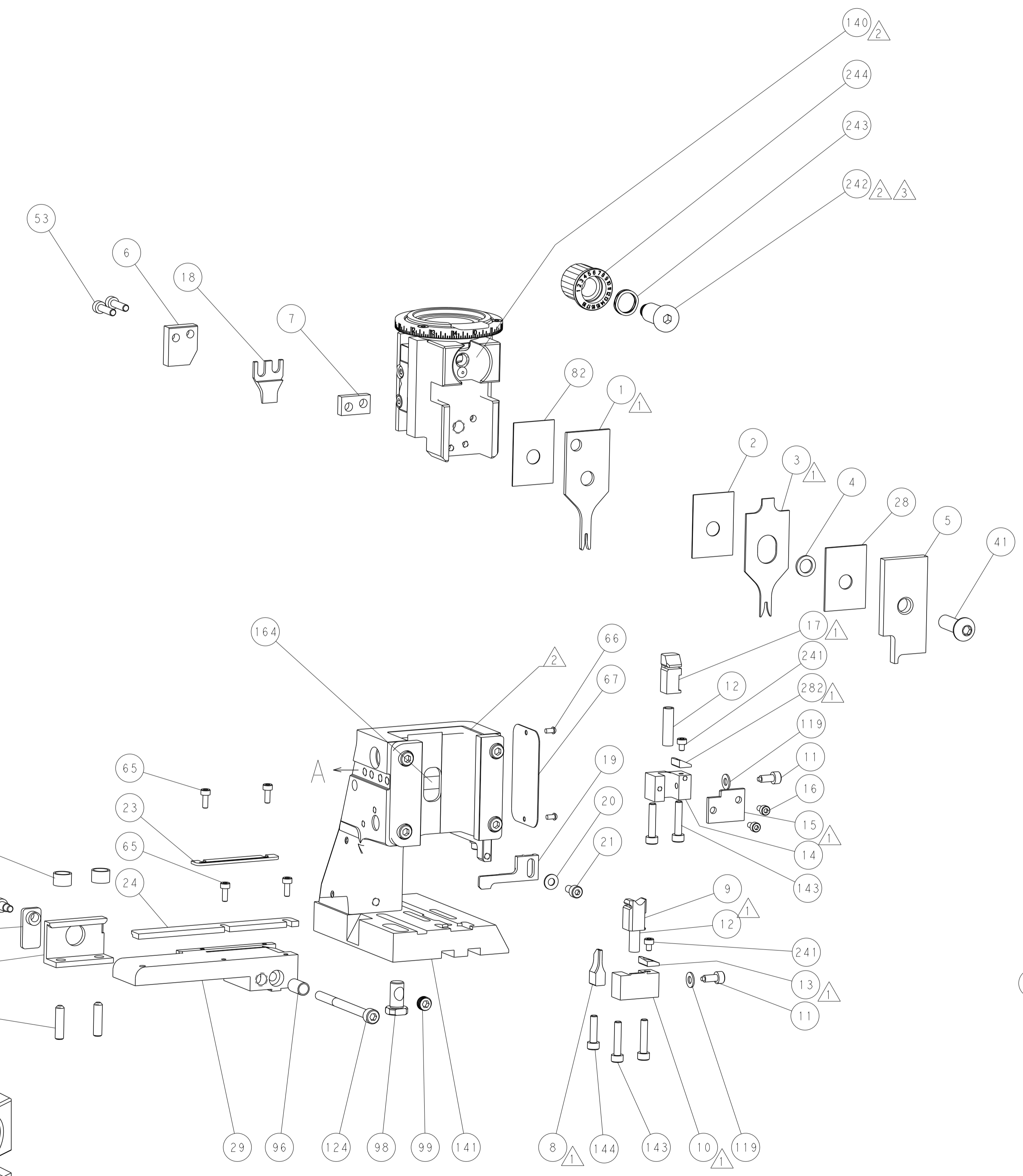


SEE DETAIL A

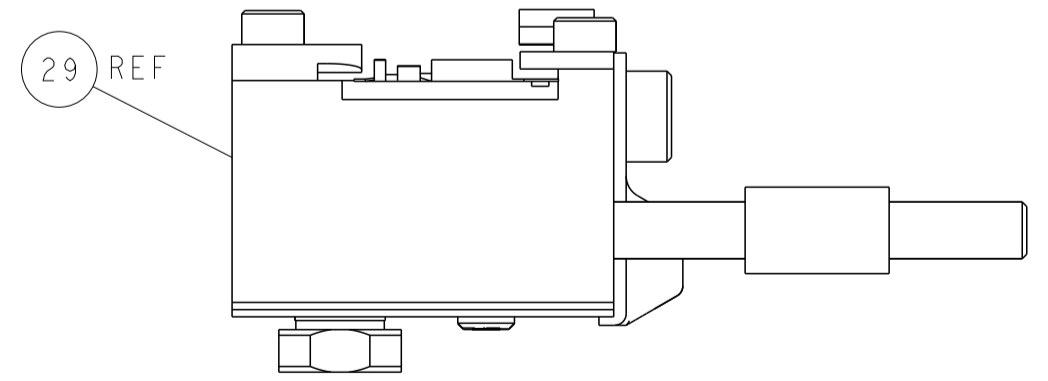
FEED SPRING SETTING POSITION
(SHOWN FROM REAR SIDE)



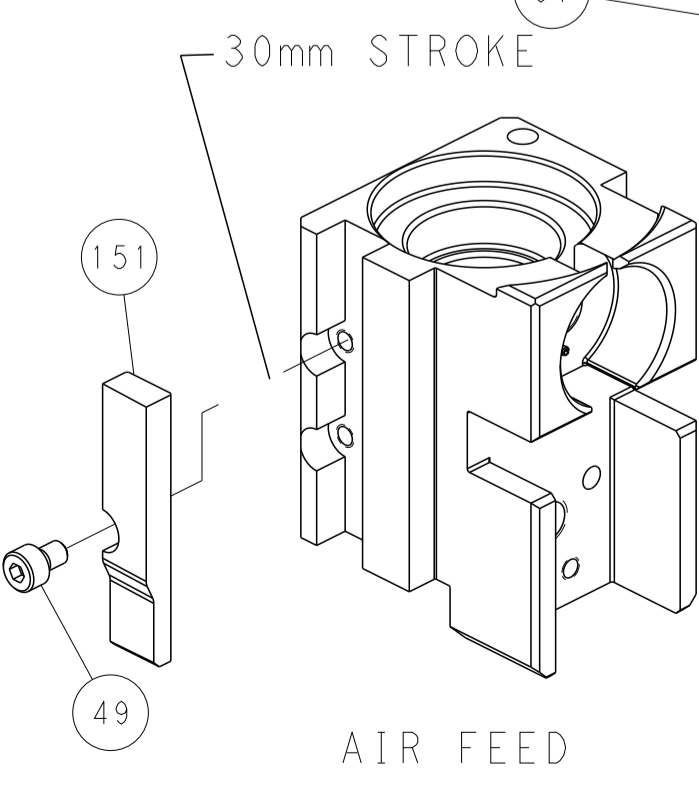
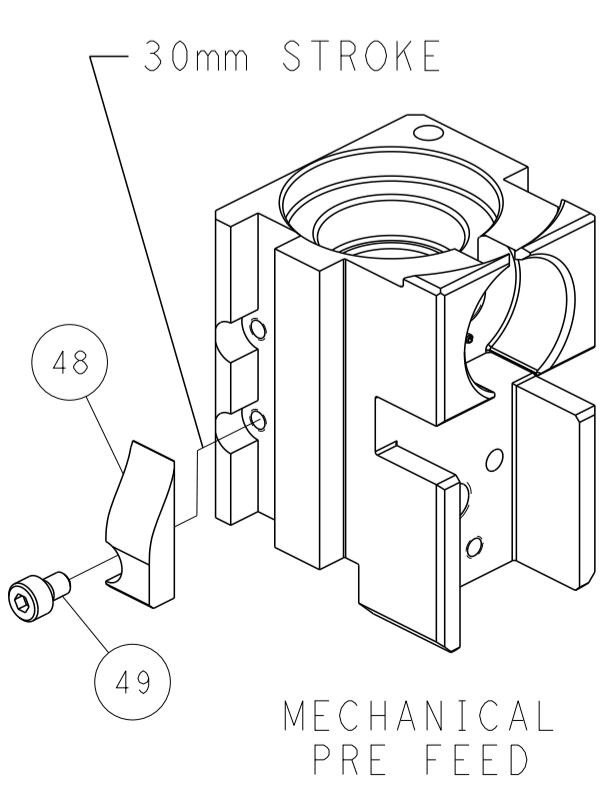
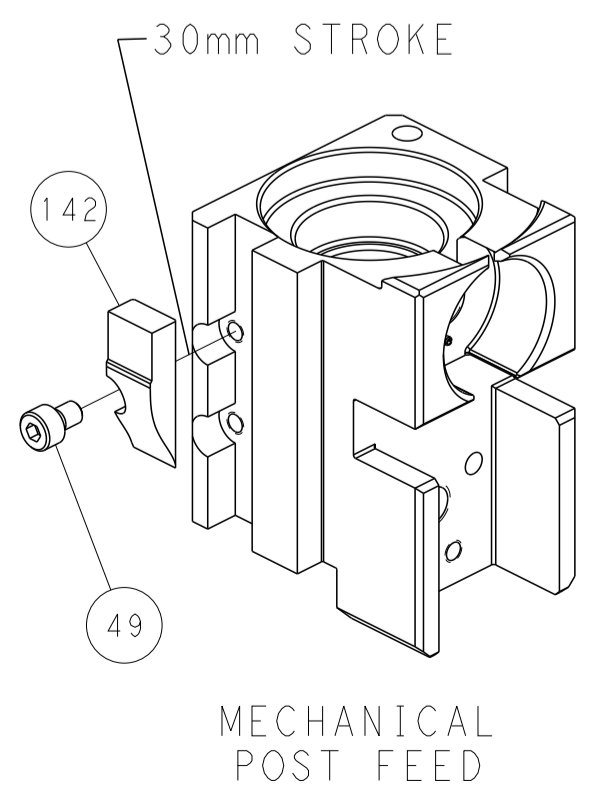
DETAIL A



ITEM 30 LOCATED AT REAR HOLES



CAM POSITIONS



PACIFIC VERSION
 Shown on sheets 3 of 4 & 4 of 4
 (Atlantic version shown on sheets 1 of 4 & 2 of 4)

| | | | | | | | |
|-------------|---------|--|---------|----------------------|---------|--|--|
| DIMENSIONS: | | TOLERANCES UNLESS OTHERWISE SPECIFIED: | | DWN Y. YIN 19OCT2011 | | TE Connectivity | |
| mm | 0 PLC ± | 1 PLC ± | 2 PLC ± | 3 PLC ± | 4 PLC ± | Harrisburg, PA 17105-3608 | |
| MATERIAL: | | FINISH: | | APVD S. XI 19OCT2011 | | NAME | |
| | | | | PRODUCT SPEC | | Ocean Side Feed Applicator | |
| | | | | APPLICATION SPEC | | SIZE CAGE CODE DRAWING NO | |
| | | | | WEIGHT | | RESTRICTED TO | |
| | | | | A 00779 C=2151142 | | Customer Accessible Production Drawing | |
| | | | | SCALE 1:2 | | SHEET 4 OF 4 REV G | |