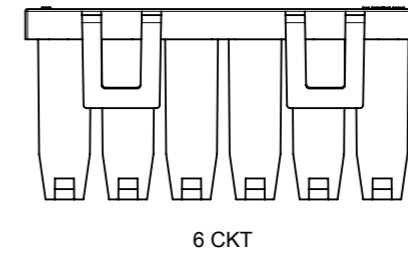
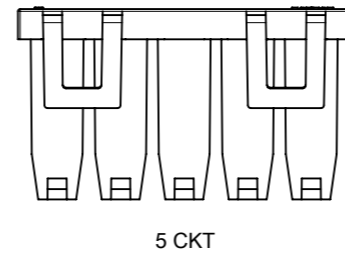
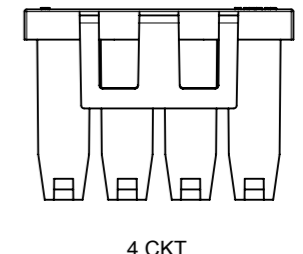
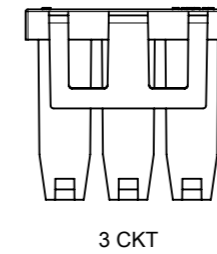
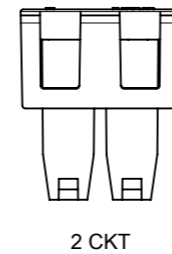
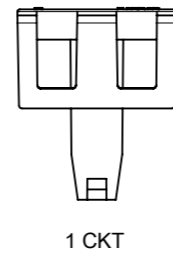
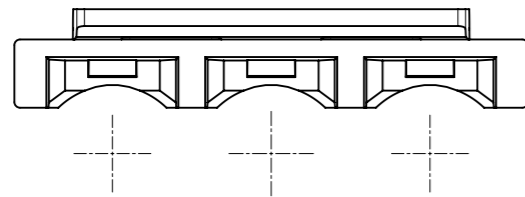
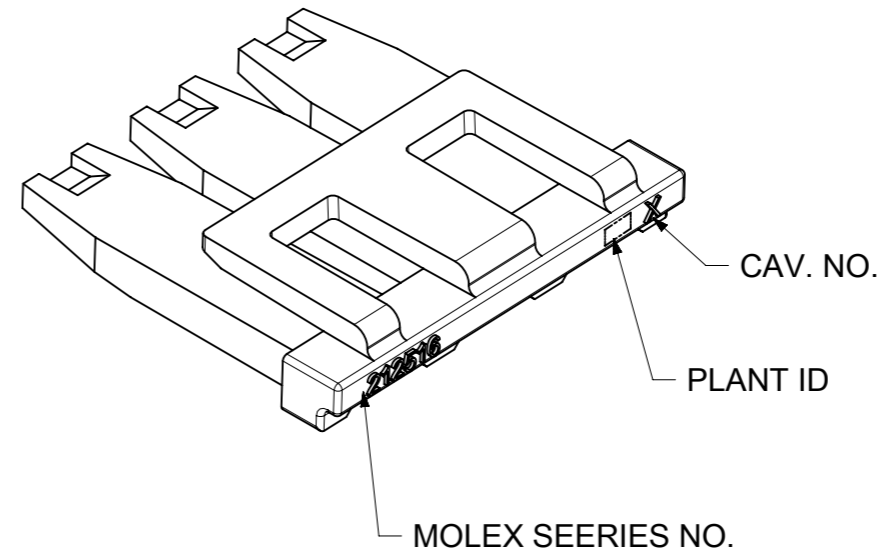
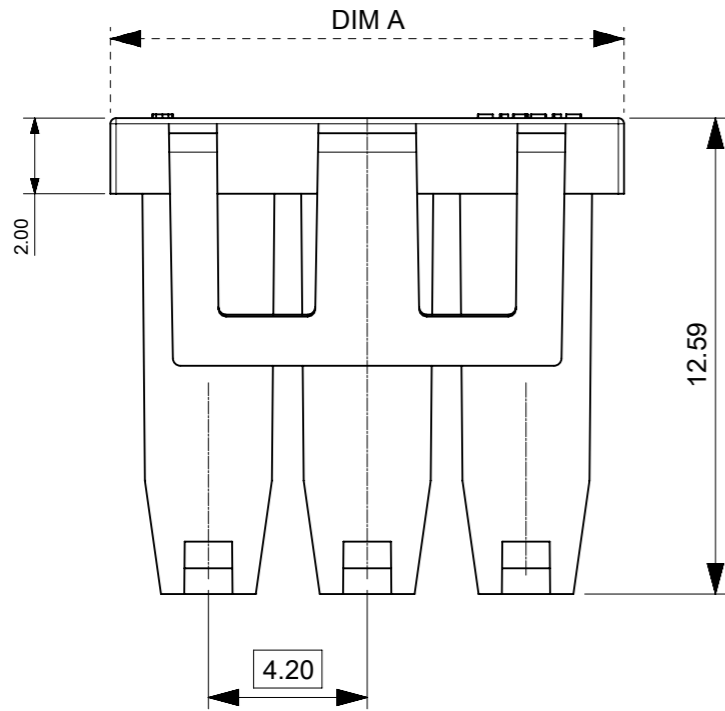


PART NO.	COLOR	CIRCUIT SIZE	DIM A
212516-1001	NATURAL	1	10.50
212516-1002		2	10.50
212516-1003		3	13.58
212516-1004		4	17.78
212516-1005		5	21.98
212516-1006		6	26.18



- NOTES:
1. MATERIAL: NYLON, NATURAL, UL 94-V0.
  2. PARTS TO BE PACKAGED PER 2125160001-PK.
  3. PRODUCT SPECIFICATION PER 2125150001-PS.
  4. PART USED WITH MOLEX RECEPTACLE HOUSING SERIES 212514.
  5. PARTS CONFORM TO CLASS "B" REQUIREMENTS OF COSMETIC SPECIFICATION PS-45499-002.
  6. APPLICATION SPECIFICATION: 2125150001-AS.
  7. MOLEX RECOMMENDS USING A NATURAL COLOR TPA FOR BLACK COLOR HOUSING AND A BLACK COLORED TPA FOR NATURAL COLORES HOUSINGS TO AID INSPECTION AFTER ASSEMBLY.

FUNCTIONAL SYMBOLS	THIS DRAWING CONTAINS INFORMATION THAT IS PROPRIETARY TO MOLEX ELECTRONIC TECHNOLOGIES, LLC AND SHOULD NOT BE USED WITHOUT WRITTEN PERMISSION		CURRENT REV DESC:		<b>molex</b>					
	△A = 0	mm							SCALE 5:1	
DIVISIONAL SYMBOLS	GENERAL TOLERANCES (UNLESS SPECIFIED)		EC NO: 663331		MINI-FIT MAX TPA					
	△E = 0	4 PLACES	±	°						
	△F = 0	3 PLACES	±		DRWN: YXZHENG	2020/07/01	PRODUCT CUSTOMER DRAWING			
	△G = 0	2 PLACES	± 0.25		CHK'D: YXZHENG	2021/05/10				
		1 PLACE	± 0.5		APPR: YXZHENG	2021/05/10	DOCUMENT NUMBER		DOC TYPE	DOC PART
	0 PLACES	±		INITIAL REVISION:		2125160001-SD		PSD	000	B
	DRAFT WHERE APPLICABLE MUST REMAIN WITHIN DIMENSIONS		THIRD ANGLE PROJECTION	DRAWING	SERIES	MATERIAL NUMBER	CUSTOMER	SHEET NUMBER		
			⊗	A3-SIZE	212516	SEE TABLE		1 OF 1		