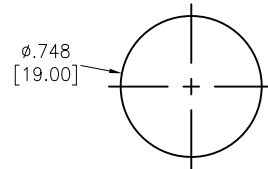
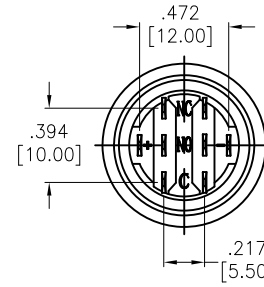
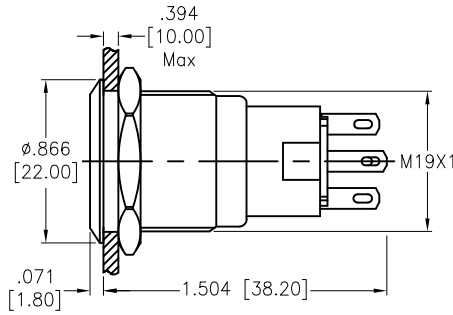
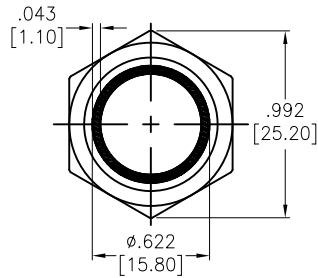


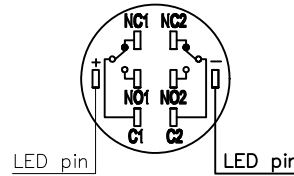
APPROVED: \_\_\_\_\_  
 DATE: \_\_\_\_\_ TITLE: \_\_\_\_\_

Rev	AWO #	Description	Date	Appr
-		RELEASED	11/2/21	
A		UPDATE SPEC.	11/12/21	WX/RC

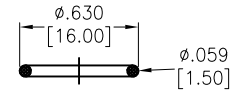
The shaded part is light design



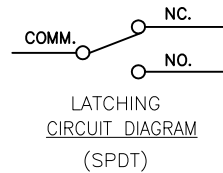
MAX.PANEL THICKNESS  
 RECOMMENDED PANEL CUT



LED pin  
 Contact Composition  
 LED pin



Seal Ring



SW-PB7-03LB22CFRXXXXX

"x"	LED Color	LED Voltage	
		6V	6V
R	Red	12V	12V AC/DC
G	Green	24V	24V AC/DC
Y	Yellow	110V	110V AC/DC
O	Orange	220V	220V AC/DC
B	Blue		
W	White		

SPECIFICATIONS:

Material:

Body: PBT, Rated UL94V-0  
 Bushing: Stainless Steel, Varnish polished  
 Button: Stainless Steel, Varnish polished  
 Contact Material: Silver Alloy, (2.8x0.5mm)  
 Nut: Brass, Nickel plated

Electrical:

Voltage rating: 250V  
 Current rating: 5A max  
 Contact resistance: 50 mΩ max.  
 Insulation resistance: 1000M ohms min @ 500V DC.  
 Dielectric withstanding voltage: 1500V RMS, 50Hz.  
 Electrical Life: 50,000 cycles min at full load.

Mechanical:

Torque: 0.6Nm max.  
 Temperature Rating:  
 Operating temperature: -25°C to +55°C  
 Environmental:

Sealed IP67 Rated  
 Lead free, RoHS compliant



UNLESS OTHERWISE SPECIFIED ALL DIMENSIONS  
 ARE INCHES [MM]. TOLERANCES: EXCEPT AS NOTED

INCHES		HOLES	
.X	± .10	ØX	± .10
.XX	± .020	ØXX	± .015
.XXX	± .015	ØXXX	± .010

DRAWN	WX	11/2/21
CHECKED	RC	11/2/21
APPROVED		

THIS DRAWING CONTAINS INFORMATION THAT IS PROPRIETARY  
 AND SHOULD NOT BE USED WITHOUT PRIOR WRITTEN  
 PERMISSION FROM ADAM TECH



909 Rahway Avenue,  
 Union, NJ 07083  
 Phone: 908-687-5000  
 Fax: 908-687-5710

TITLE SWITCH, ANTI-VANDAL, PUSH BUTTON,  
 19mm, LIGHTED RING, SPDT,LATCHING, N.O.-N.C.

SIZE X	PART NO. SW-PB7-03LB22CFRXXXXX	REV. A
REF: S00198T	SCALE: NTS	SHEET 1 OF 1