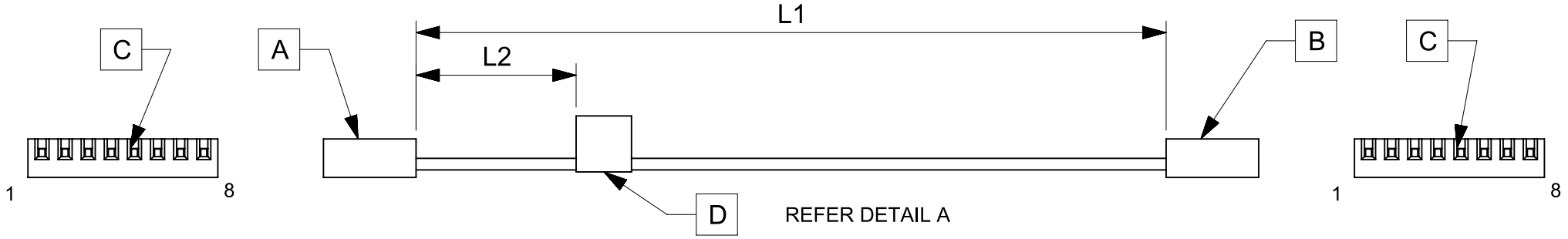


| ITEM | PART#   | DESCRIPTION                         | QTY | UOM |
|------|---------|-------------------------------------|-----|-----|
| A,B  | 9508080 | KK 156 Crimp Housing 08 Ckt         | 2   | PC  |
| C    | 8500105 | KK 156 TERMINAL CRIMP 18-24 AWG TIN | 16  | PC  |
| D    |         | PAPER PRINTED PAPER WHITE           | 1   | PC  |

| FROM | TO | DESCRIPTION             | COLOR |
|------|----|-------------------------|-------|
| A1   | B8 | 1X18AWG MPPE BK UL11028 | BLACK |
| A2   | B7 | 1X18AWG MPPE BK UL11028 | BLACK |
| A3   | B6 | 1X18AWG MPPE BK UL11028 | BLACK |
| A4   | B5 | 1X18AWG MPPE BK UL11028 | BLACK |
| A5   | B4 | 1X18AWG MPPE BK UL11028 | BLACK |
| A6   | B3 | 1X18AWG MPPE BK UL11028 | BLACK |
| A7   | B2 | 1X18AWG MPPE BK UL11028 | BLACK |
| A8   | B1 | 1X18AWG MPPE BK UL11028 | BLACK |



| TABLE       |       |          |                                |
|-------------|-------|----------|--------------------------------|
| PART NUMBER | L1    | L2 (REF) | TITLE                          |
| 2196641082  | 150±4 | 50       | KK 3.96 R-R 8ckt 150mm disc Sn |
| 2196641083  | 300±4 | 50       | KK 3.96 R-R 8ckt 300mm disc Sn |
| 2196641084  | 600±6 | 50       | KK 3.96 R-R 8ckt 600mm disc Sn |

**NOTES**

1. Cable assembly must pass 100% continuity and polarity test.
2. Connector view shown is from mating side.
3. Label text must be 2mm max. in height with Arial font.
4. Label must be wrapped in Flag type on a single cable.

MOLEX P/N  
MOLEX  
BATCH WK/YR  
DETAIL A

| REVISION   |     |                 |         |
|------------|-----|-----------------|---------|
| DATE       | REV | DESCRIPTION     | CHANGER |
| 2021/12/27 | A   | INITIAL RELEASE | SAIKIG  |

|   |   |  |                                       |                              |                                      |          |          |
|---|---|--|---------------------------------------|------------------------------|--------------------------------------|----------|----------|
| FUNCTIONAL SYMBOLS<br>$\frac{F}{A} = 0$<br>$\frac{F}{E} = 0$<br>$\frac{F}{P} = 0$<br>DIVISIONAL SYMBOLS | THIS DRAWING CONTAINS INFORMATION THAT IS PROPRIETARY TO MOLEX ELECTRONIC TECHNOLOGIES, LLC AND SHOULD NOT BE USED WITHOUT WRITTEN PERMISSION |  | CURRENT REV DESC:                     |                              |                                      |          |          |
|   | DIMENSION UNITS   | SCALE  | GENERAL TOLERANCES (UNLESS SPECIFIED) |                              |                                      |          |          |
|   | mm  | NTS  | ANGULAR TOL ± °                       |                              |                                      |          |          |
|   | 4 PLACES ±  |  | 3 PLACES ±                            |                              |                                      |          |          |
| 3 PLACES ±  |   | 2 PLACES ±   |                                       | EC NO: 691733                | PRODUCT CUSTOMER DRAWING             |          |          |
| 2 PLACES ±  |   | 1 PLACE ±  |                                       | DRWN: SAIKIG 2021/12/29      |                                      |          |          |
| 1 PLACE ±   |   | 0 PLACES ±   |                                       | CHK'D: MNARAYAN01 2022/01/19 | DOCUMENT NUMBER<br><b>2196641082</b> |          |          |
| 0 PLACES ±  |   | DRAFT WHERE APPLICABLE MUST REMAIN WITHIN DIMENSIONS |                                       | APPR: MNARAYAN01 2022/01/19  |                                      |          |          |
| THIRD ANGLE PROJECTION  |   | DRAWING  | SERIES                                | MATERIAL NUMBER              | DOC TYPE                             | DOC PART | REVISION |
|   |   | A4-SIZE  | 219664                                | SEE TABLE                    | PSD                                  | 000      | A        |
| SHEET NUMBER  |   | CUSTOMER   |                                       | GENERAL MARKET               |                                      | 1 OF 1   |          |