

THIS DRAWING IS UNPUBLISHED.

RELEASED FOR PUBLICATION

ALL RIGHTS RESERVED.

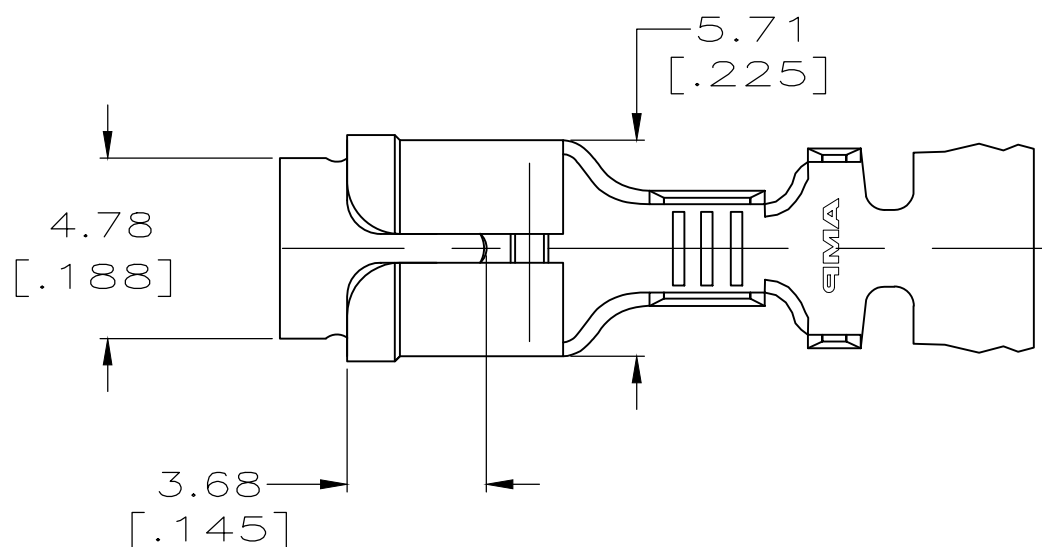
© COPYRIGHT - By -

LOC  
AF

DIST  
50

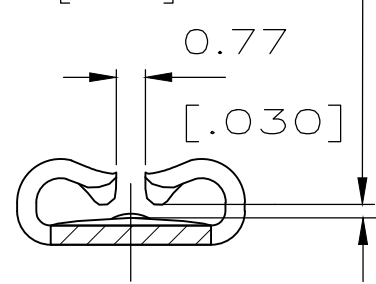
REVISIONS

P	LTR	DESCRIPTION	DATE	DWN	APVD
	C1	REVISED PER ECR-20-009164	23JUL2020	MK	DH

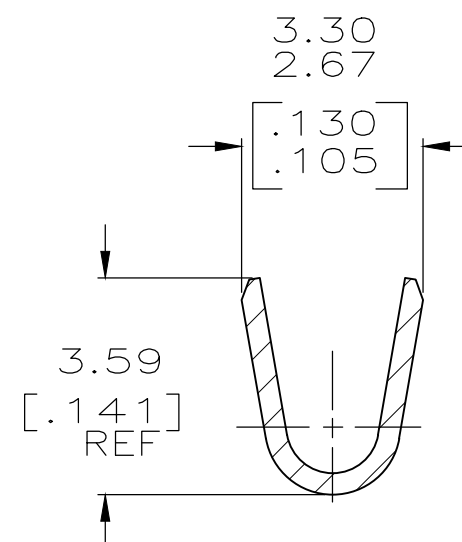
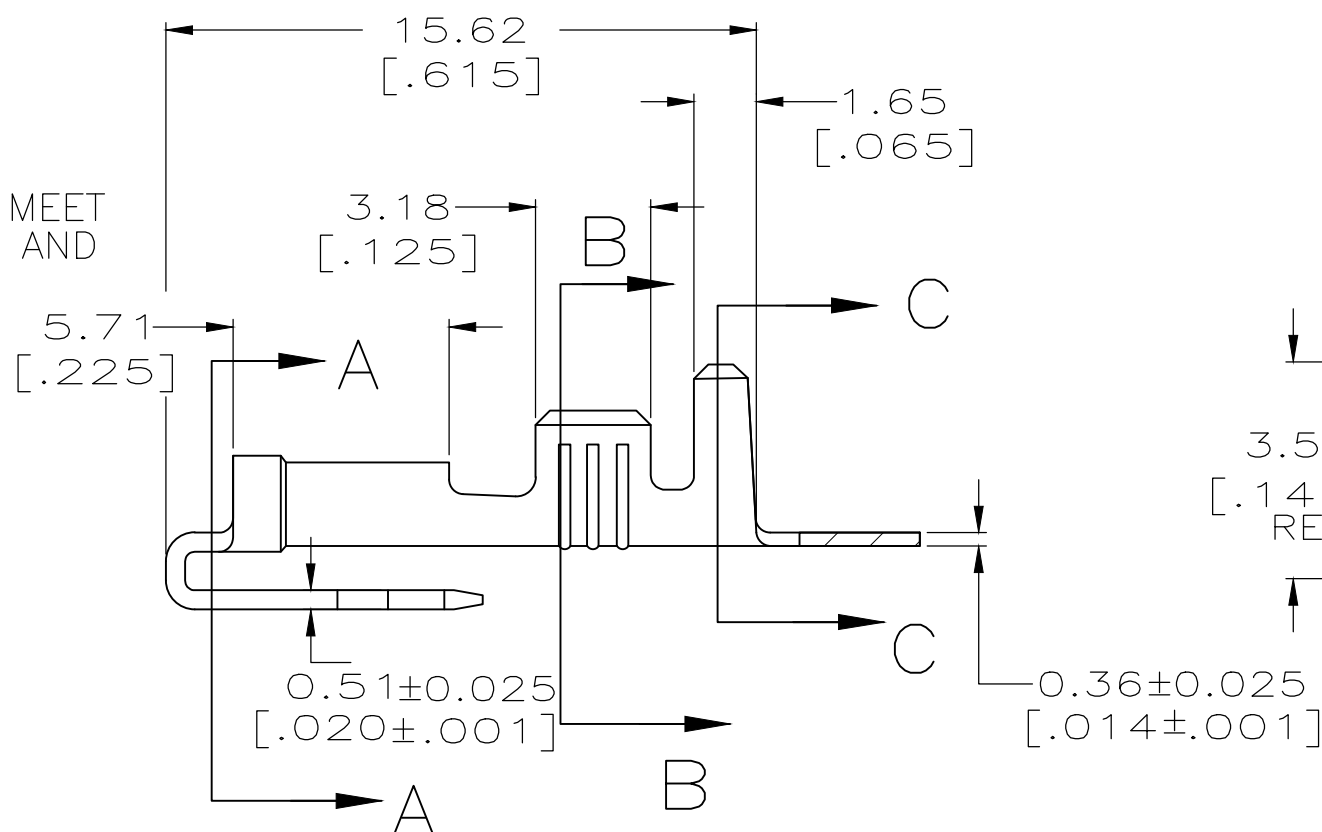


- CONTINUOUS STRIP ON REELS.
- WIRE SIZE IS [#18-#14] AWG.
- INSULATION RANGE IS 2.79-4.06 [.110-.160] DIA.
- MATING TAB THK IS 0.53-0.48 [.021-.019].

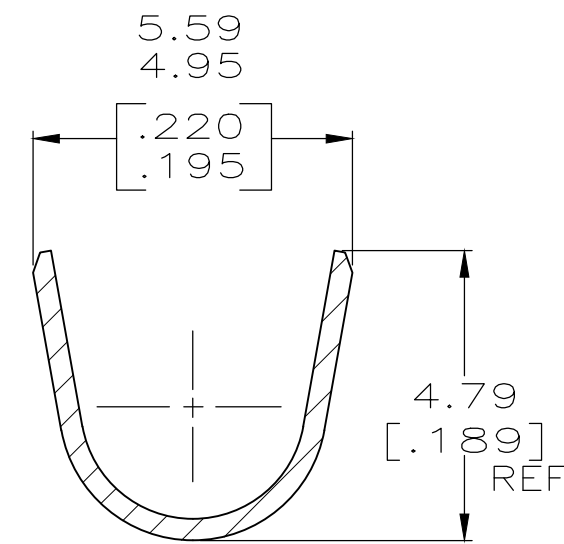
GAP AS REQUIRED TO MEET FORCE SPECIFICATIONS AND 0.45 [.018]MAX



SECTION A-A




SECTION B-B  
SCALE 8:1



SECTION C-C  
SCALE 8:1

1217151-1  
PART NO.

THIS DRAWING IS A CONTROLLED DOCUMENT.		DWN JR RUTH 6MAY99	 <b>TE Connectivity</b>  RECEPTACLE, PIGGYBACK, FASTON, 4.75 [.187] SERIES											
DIMENSIONS: mm [INCHES]		CHK MS FEHER 6MAY99												
TOLERANCES UNLESS OTHERWISE SPECIFIED:		APVD S HEADER 6MAY99												
<table border="0"> <tr><td>0 PLC</td><td>± -</td></tr> <tr><td>1 PLC</td><td>± -</td></tr> <tr><td>2 PLC</td><td>± 0.25 [.010]</td></tr> <tr><td>3 PLC</td><td>± -</td></tr> <tr><td>4 PLC</td><td>± -</td></tr> <tr><td>ANGLES</td><td>± -</td></tr> </table>		0 PLC				± -	1 PLC	± -	2 PLC	± 0.25 [.010]	3 PLC	± -	4 PLC	± -
0 PLC	± -													
1 PLC	± -													
2 PLC	± 0.25 [.010]													
3 PLC	± -													
4 PLC	± -													
ANGLES	± -													
MATERIAL BRASS		FINISH TIN	PRODUCT SPEC -	APPLICATION SPEC -	RESTRICTED TO -									
CUSTOMER DRAWING			SIZE A3	CAGE CODE 00779	DRAWING NO C-1217151									
			SCALE 5:1	SHEET 1 OF 1	REV C1									