

NO: SD-089 **PRODUCT:** SE Motor Protective Relays,
SAO Current Sensor
DATE: August 2015 **TYPE:** Modification Notice

SE Motor Protective Relays and SAO Current Sensor have Appearance Modified

Effective date: February 2016 production

Reason for modification: The product appearance needed to be modified due to discontinuation of parts and materials. There is no change in operation or performance.



Affected Parts

Models
SE-K1EN
SE-K2EN
SE-K4EN
SE-KP1EN
SE-KP2EN
SE-KQ1EN
SE-KQ2EN
SE-KQ4EN
SE-KQP1EN
SE-KQP2EN
SAO-Q1N
SAO-Q2N
SAO-Q5N
SAO-Q6N
SAO-Q7N
SAO-QS1N
SAO-QS2N
SAO-QS5N
SAO-QS6N
SAO-QS7N
SAO-R1N

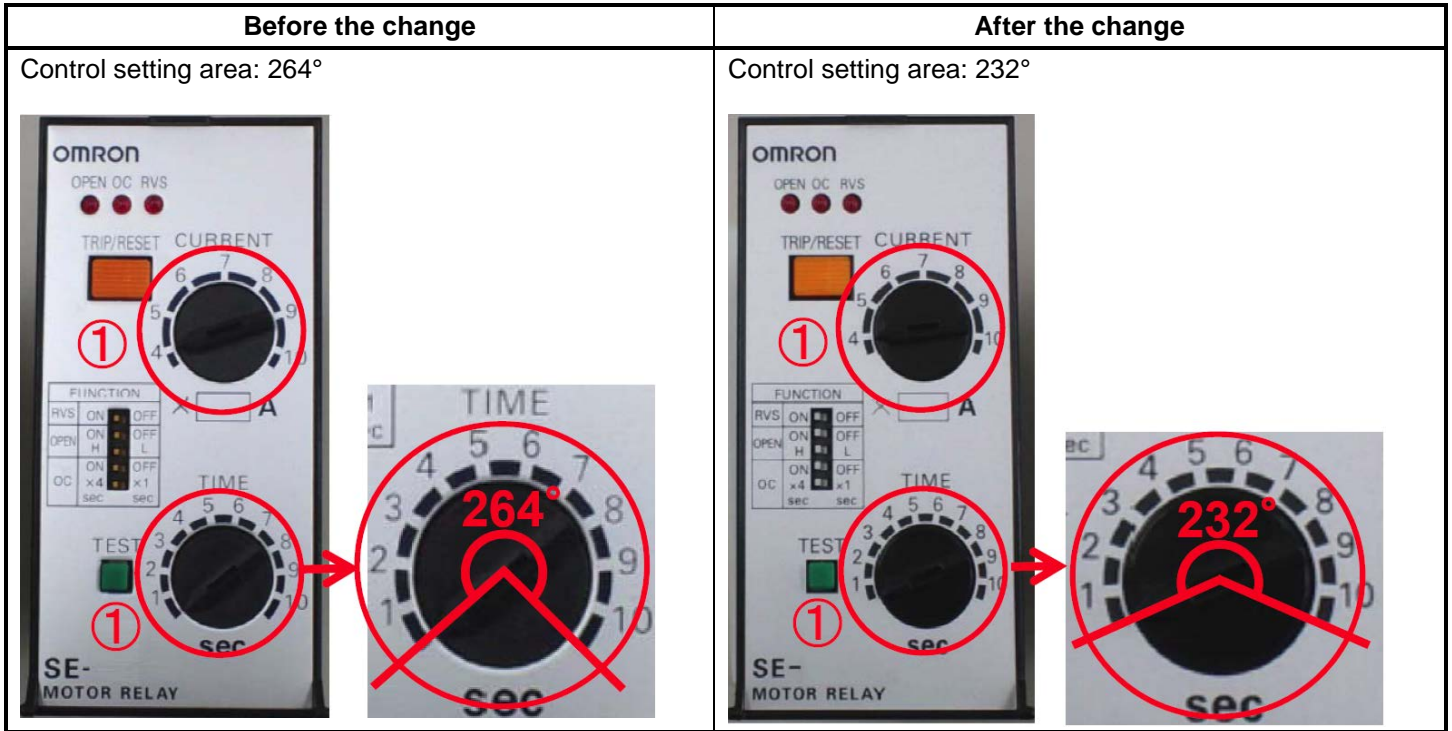
Models
SAO-R2N
SAO-R5N
SAO-R6N
SAO-R7N
SAO-RS1N
SAO-RS2N
SAO-RS5N
SAO-RS6N
SAO-RS7N
SAO-S1N
SAO-S2N
SAO-S5N
SAO-S6N
SAO-S7N
SAO-SS1N
SAO-SS2N
SAO-SS5N
SAO-SS6N
SAO-SS7N
SAO-SU1N
SAO-SU2N

Models
SAO-SU5N
SAO-SU6N
SAO-SU7N
SE-K1AN
SE-K1N
SE-K2AN
SE-K2N
SE-K4N
SE-KP1AN
SE-KP1N
SE-KP2AN
SE-KP2N
SE-KQ1AN
SE-KQ1N
SE-KQ2AN
SE-KQ2N
SE-KQ4N
SE-KQP1AN
SE-KQP1N
SE-KQP2AN
SE-KQP2N

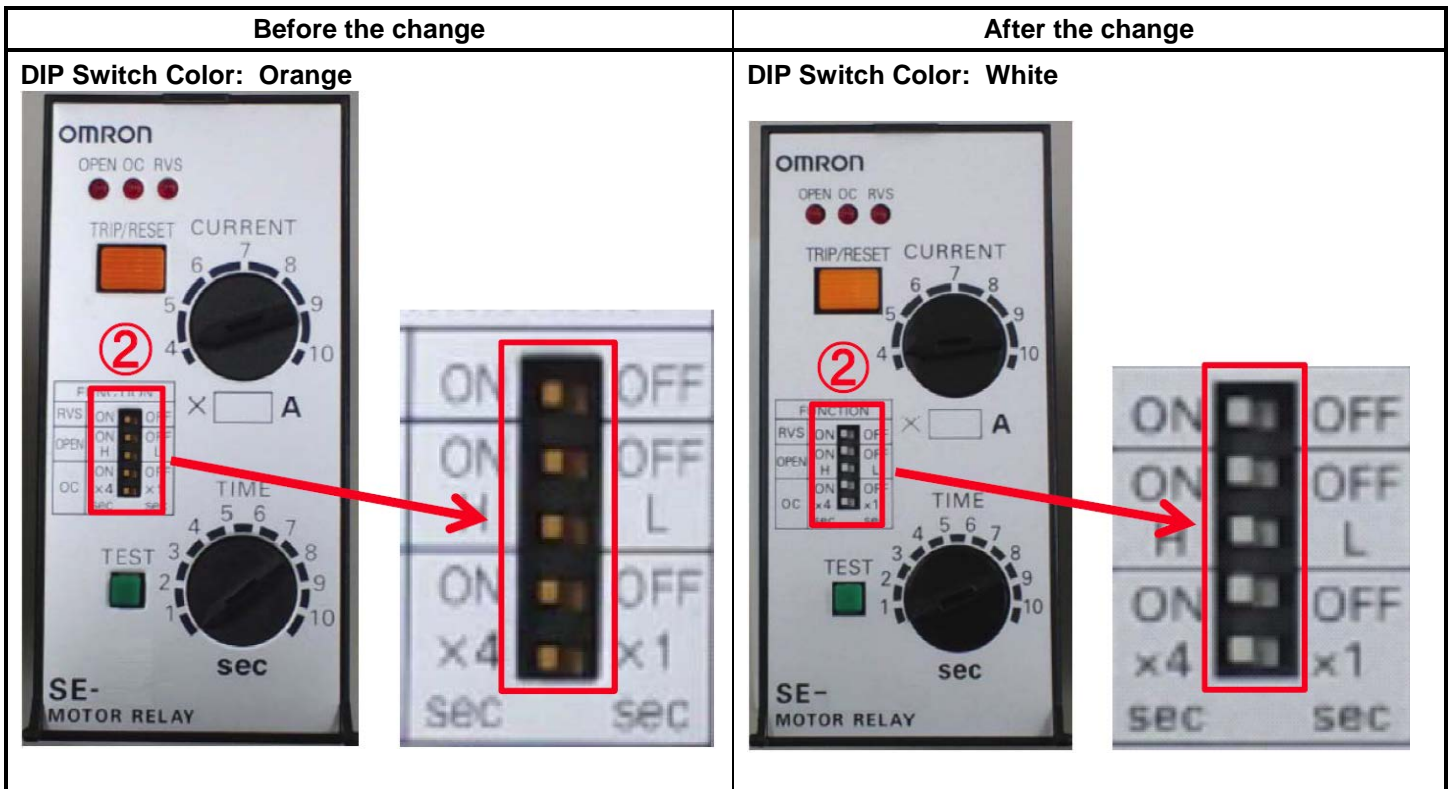
Changes

Examples of changes are shown on SE series models. The same changes apply to SAO series models


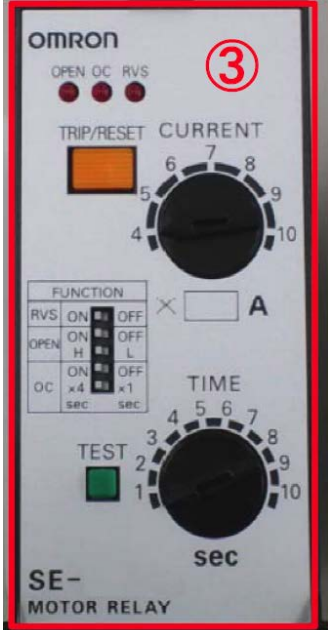
Setting Operating Current and Setting Operating Time



Function Setting DIP Switch Color



Front Nameplate Material

Before the change	After the change
<p>Front nameplate material: Aluminum</p> 	<p>Front nameplate material: Polycarbonate</p> 

Specifications in this product news are as of the issue date and are subject to change without notice. Only main changes in specifications are described in this document. Please be sure to read the relevant catalogs, datasheets, product specifications, instructions, and manuals for precautions and necessary information when using products.