

Light is OSRAM

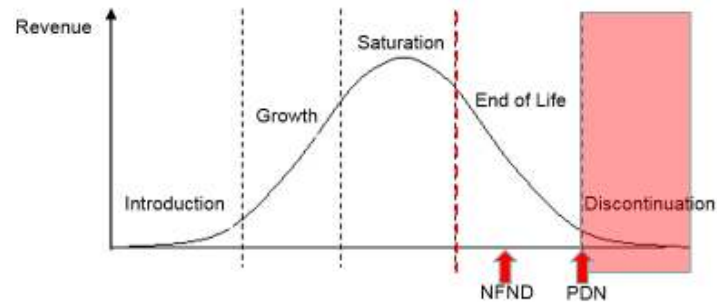
Product Discontinuation (acc. JEDEC J-STD-048)  
OS-PD-2018-049

15-May-2018

---

|                       |                        |
|-----------------------|------------------------|
| <b>Last order:</b>    | 15-Nov-2018            |
| <b>Last delivery:</b> | 15-May-2019            |
| <b>Reason:</b>        | Brightness Improvement |

---



Please direct your feedback to your local Sales office.

| DISCONTINUED                      |               |          |                             | NEW (REPLACEMENT)                 |                         |          |                             |
|-----------------------------------|---------------|----------|-----------------------------|-----------------------------------|-------------------------|----------|-----------------------------|
| Device                            | Ordering Code | Function | Brand                       | Device                            | Datasheet Ordering Code | Function | Brand                       |
| <b>GW PUSTA1.PM</b>               |               |          |                             |                                   |                         |          |                             |
| GW PUSTA1.PM-NCND-XX57-1-1050-R18 | Q65112A3813   | LED      | OSCONIQ P 3737 (3W version) | GW PUSTA1.PM-NDPA-XX57-1-1050-R18 | Q65112A6212             | LED      | OSCONIQ P 3737 (3W version) |
| GW PUSTA1.PM-NDNE-XX55-1-1050-R18 | Q65112A3816   | LED      | OSCONIQ P 3737 (3W version) | GW PUSTA1.PM-NEPB-XX55-1-1050-R18 | Q65112A6211             | LED      | OSCONIQ P 3737 (3W version) |
| GW PUSTA1.PM-NEPA-XX55-1-1050-R18 | Q65112A3815   | LED      | OSCONIQ P 3737 (3W version) | GW PUSTA1.PM-NEPB-XX55-1-1050-R18 | Q65112A6211             | LED      | OSCONIQ P 3737 (3W version) |
| GW PUSTA1.PM-NDNE-XX53-1-1050-R18 | Q65112A3811   | LED      | OSCONIQ P 3737 (3W version) | GW PUSTA1.PM-NEPB-XX53-1-1050-R18 | Q65112A6213             | LED      | OSCONIQ P 3737 (3W version) |
| GW PUSTA1.PM-NEPA-XX53-1-1050-R18 | Q65112A3810   | LED      | OSCONIQ P 3737 (3W version) | GW PUSTA1.PM-NEPB-XX53-1-1050-R18 | Q65112A6213             | LED      | OSCONIQ P 3737 (3W version) |
|                                   |               |          |                             |                                   |                         |          |                             |
|                                   |               |          |                             |                                   |                         |          |                             |
|                                   |               |          |                             |                                   |                         |          |                             |

## *Products Affected by Product Discontinuation Notification*

**Number:** OS-PD-2018-049

**Name:** Discontinuation due to brightness improvement

**Release Date:** 5/15/2018

**Last Order:** 11/15/2018

**Last Delivery:** 5/15/2019

### *DISCONTINUED*

### *NEW (REPLACEMENT)*

| <i>Product</i> | <i>QNumber</i> | <i>QNumber Description</i>        | <i>Part Number</i> | <i>Product</i> | <i>QNumber</i> | <i>QNumber Description</i>        | <i>Part Number</i> |
|----------------|----------------|-----------------------------------|--------------------|----------------|----------------|-----------------------------------|--------------------|
| GW PUSTA1      | Q65112A3810    | GW PUSTA1.PM-NEPA-XX53-1-1050-R18 |                    | GW PUSTA1      | Q65112A6213    | GW PUSTA1.PM-NEPB-XX53-1-1050-R18 |                    |
| GW PUSTA1      | Q65112A3811    | GW PUSTA1.PM-NDNE-XX53-1-1050-R18 |                    | GW PUSTA1      | Q65112A6213    | GW PUSTA1.PM-NEPB-XX53-1-1050-R18 |                    |
| GW PUSTA1      | Q65112A3813    | GW PUSTA1.PM-NCND-XX57-1-1050-R18 |                    | GW PUSTA1      | Q65112A6212    | GW PUSTA1.PM-NDPA-XX57-1-1050-R18 |                    |
| GW PUSTA1      | Q65112A3815    | GW PUSTA1.PM-NEPA-XX55-1-1050-R18 |                    | GW PUSTA1      | Q65112A6211    | GW PUSTA1.PM-NEPB-XX55-1-1050-R18 |                    |
| GW PUSTA1      | Q65112A3816    | GW PUSTA1.PM-NDNE-XX55-1-1050-R18 |                    | GW PUSTA1      | Q65112A6211    | GW PUSTA1.PM-NEPB-XX55-1-1050-R18 |                    |