



# Product Change Notification (PCN)

PCN Number	511026	Date Issued	November 01, 2021
Reason for Change	Capacity change or tool replacement		
Change Type Description	This letter is to inform you that another set of tooling is being added to meet the current and future demands of this product. There will be no changes in the fit, form or function from the additional tooling when compared to the current tooling.		
Reason for Short Notice	New Capacity		
Assessment of Change	Product will be fully qualified before it is shipped. Qualification reports will be available after below listed date		
Internal Molex Qualification Date	January 28, 2022		
Sample Availability Date (Changed Part)	January 28, 2022		
Planned Implementation Date	February 04, 2022		
Method of Identifying Change	Product made after planned implementation date can contain the change		

RELEASED

## Before Change

- 5559 Series
  - Mini-Fit Jr. Plug Housing

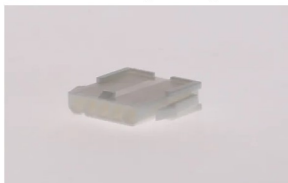


Photo is used as representation of product only. Mini-Fit Jr. Plug Housing may come in different circuit sizes and colors

## After Change

### Overview

- To ensure business continuity, another set of tooling is being added
  - New tooling will be an exact replica of current tooling
  - Tooling being added to keep up with current and future demand
- There is NO impact to Fit, Form or Function
- Samples available upon request after date shown above
- Part Numbers Impacted
  - See attached list



## Product Change Notification (PCN)

---

You may address any technical inquiries regarding this PCN by sending E-mail to [pcn\\_coordinator@molex.com](mailto:pcn_coordinator@molex.com) or your Local Sales Engineer.

Note: While responding, please retain "**PCN Notification:511026**" in the e-mail Subject line for faster response.

RELEASED

**Molex, LLC**  
2222 Wellington Court  
Lisle, IL 60532  
TEL: 630-969-4747  
[www.molex.com](http://www.molex.com)

PCN #	Molex Part #
511026	2153221051
511026	2153221052
511026	2153221053
511026	2153222051
511026	2153222052
511026	2153222053
511026	2153231051
511026	2153231052
511026	2153231053
511026	2153232051
511026	2153232052
511026	2153232053

**Affected Parts:**

39-01-4052
39-01-4053