

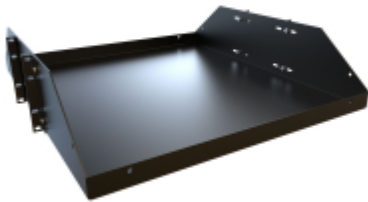


Quality Products. Service Excellence.

Two Post Heavy Duty Battery Shelf *BRS Series*

550 lbs (250 kg) Weight Capacity

Features



- Designed for use with our Heavy Duty **DNRR** and **DRZ4** double-tapped two (2) post racks.
- Constructed of heavy duty 12 gauge steel.
- Use to support heavy chassis or batteries for DC battery array.
- Choice of 19" or 24" deep.
- Front & rear lip folded and welded for extra strength and liquid retainer.
 - For a similar design that is light duty and vented, see the **DNRM Series**.
- Finished in a rugged textured black powder paint finish.
- Tested to nearly double the suggested load rating of 550 lbs (250 kg).
- TAA compliant for GSA Schedule purchases.
- RoHS and REACH compliant.
- Manufactured in North America.

19 Inch Rack Mounting Shelf

| Part No. | Rack Units | Mounting Dimensions | | |
|-------------|------------|---------------------|-------|-------|
| | | Height | Width | Depth |
| BRS2P1919BK | 3U | 5.25 | 19.00 | 19.00 |
| BRS2P1924BK | 3U | 5.25 | 19.00 | 24.00 |



23 Inch Rack Mounting Shelf

| Part No. | Rack Units | Mounting Dimensions | | |
|-------------|------------|---------------------|-------|-------|
| | | Height | Width | Depth |
| BRS2P2319BK | 3U | 5.25 | 23.00 | 19.00 |
| BRS2P2324BK | 3U | 5.25 | 23.00 | 24.00 |



What's Inside the Box

| Qty Included | Description | Replacement Part No. |
|--------------|-------------------------------|----------------------|
| 1 | Rack Shelf | |
| 4 | Rack mounting brackets | |
| 1 | Assembly Instructions | |
| 8 | 10-32 Keps nut | |
| 16 | 10-32 x 0.5in Assembly screws | |
| 8 | 12-24 x 0.5in Screws | |

Data subject to change without notice

