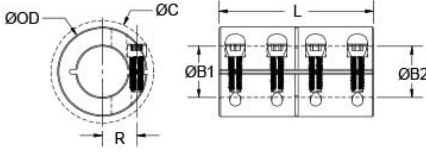




MCLX-20-12-F

Ruland MCLX-20-12-F, 20mm x 12mm Rigid Coupling, Black Oxide Steel, One-Piece Clamp Style, 42mm OD, 65mm Length




Description

Ruland MCLX-20-12-F is a one-piece rigid coupling with 20mm x 12mm bores, 42mm OD, and 65mm length. Proprietary Nypatch® anti-vibration coating on hardware allows for even seating of the screw, repeated screw installations, prevents galling, and maintains high holding power. It eliminates the need to treat screws upon receipt greatly reducing installation time. Forged screws test beyond DIN 912 12.9 standards to ensure maximum holding power. Tightly controlled bore tolerance of $+0.050\text{mm}/+0.012\text{mm}$ is maintained. MCLX-20-12-F is made from 1215 lead-free steel with a proprietary black oxide finish that produces a fine glossy finish while increasing holding power and resisting corrosion. It is machined from solid bar stock that is sourced exclusively from North American mills and is RoHS3 and REACH compliant. MCLX-20-12-F is manufactured in our Marlborough, MA factory under strict controls using proprietary processes.

Product Specifications

Bore (B1)	20 mm	Small Bore (B2)	12 mm
B1 Max Shaft Penetration	32.5 mm	B2 Max Shaft Penetration	32.5 mm
Outer Diameter (OD)	42 mm	Bore Tolerance	$+0.050\text{ mm} / +0.012\text{ mm}$
Length (L)	65 mm	Recommended Shaft Tolerance	$+0.000\text{ mm} / -0.013\text{ mm}$
Forged Clamp Screw	M6	Screw Material	Alloy Steel with Nypatch®
Hex Wrench Size	5.0 mm	Screw Finish	Black Oxide
Seating Torque	16 Nm	Number of Screws	4 ea
Rated Torque	350 Nm	Moment of Inertia	$1.400 \times 10^{-4}\text{ kg}\cdot\text{m}^2$
Maximum Speed	4,000 RPM	Full Bearing Support Required?	No
Nypatch® Anti-Vibration Hardware?	Yes	Zero-Backlash?	Yes
Material Specification	1215 Carbon Steel Bar	Temperature	-40°F to 350°F (-40°C to 176°C)
Finish Specification	Hot Process Black Oxide, Impregnated with Naphthenic Oil, Centrifugally Dried	Manufacturer	Ruland Manufacturing
Country of Origin	USA	Weight (lbs)	1.212100
UPC	634529121269	Tariff Code	8483.60.8000
UNSPC	31163009		

Note 1 Performance ratings are for guidance only. The user must determine suitability for a particular application.

Prop 65  **WARNING** This product can expose you to the chemical Ethylene Thiourea, known to the State of California to cause cancer and birth defects or other reproductive harm. For more information go to www.P65Warnings.ca.gov.

Installation Instructions

1. Align the MCLX-20-12-F one-piece rigid coupling on the two shafts to be connected. There should be no misalignment.
2. Tighten the Nypatch® screws in two stages, starting with the inside screws. Using a 5.0 mm torque wrench, tighten the inside screws to 8 Nm which is half the recommended seating torque. Repeat for the outside screws, again tightening to half of the recommended seating torque.
3. Tighten the screws to the full recommended seating torque of 16 Nm following the same pattern, starting with the inside screws first.