

CABLE SPECIFICATION:

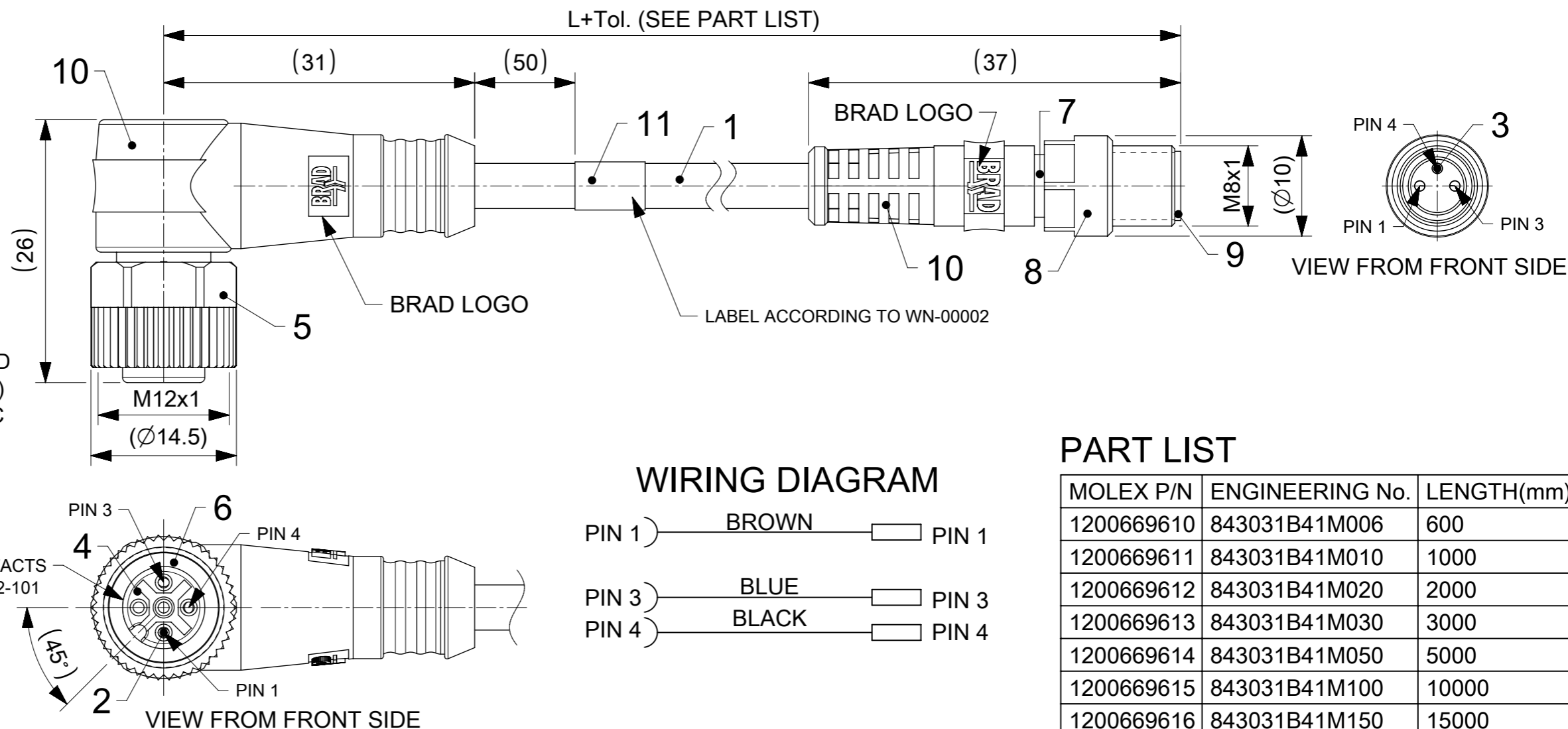
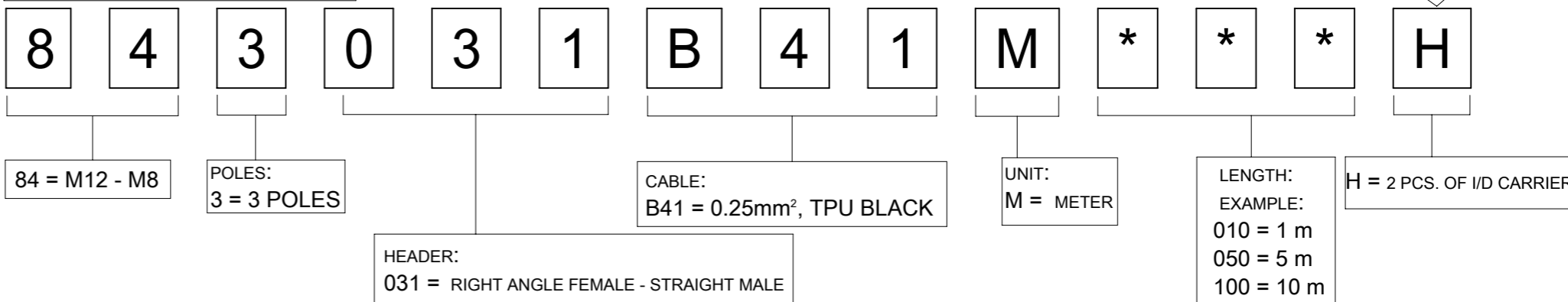
CONDUCTOR:  
 MATERIAL: BARE COPPER  
 CROSS SECTION: 24 AWG /  $\varnothing 0.25 \text{ mm}^2$   
 INSULATION COMPOUND: TPE  
 INSULATION DIAMETER:  $\varnothing 1.15 \pm 0.10 \text{ mm}$

OUTER JACKET:  
 COMPOUND: TPU COMPOUND  
 COLOR: BLACK  
 DIAMETER:  $\varnothing 4.50 \pm 0.20 \text{ mm}$

ELECTRICAL DATA :  
 VOLTAGE RATING : 60V  
 AMPERAGE RATING : 3A  
 INSULATION RESISTANCE :  $10^8 \Omega \text{ MIN.}$   
 MATING CYCLES : MIN. 100

ENVIRONMENTAL :  
 IP PROTECTION CLASS : IP65 (IN MATED AND LOCKED POSITION)  
 OPERATING TEMPERATURE :  $-25^\circ\text{C}$  TO  $+85^\circ\text{C}$

PART NO MATRIX



WIRING DIAGRAM



PART LIST

MOLEX P/N	ENGINEERING No.	LENGTH(mm)
1200669610	843031B41M006	600
1200669611	843031B41M010	1000
1200669612	843031B41M020	2000
1200669613	843031B41M030	3000
1200669614	843031B41M050	5000
1200669615	843031B41M100	10000
1200669616	843031B41M150	15000

BOM

ITEM No.	QTY.	DESCRIPTION	MATERIAL	FINISH/COLOR
1	-	CABLE 3X0.25 D4.50 UNSH	TPU	BLACK
2	3	CONTACT 10 FE	BRASS	SELECTIVE GOLD OVER NICKEL
3	3	CONTACT 10 MA	BRASS	GOLD OVER Ni-PLATED
4	1	INSERT M12 FE	TPU	BLACK
5	1	COUPLING NUT M12	BRASS	Ni-PLATED
6	1	GASKET	FPM	RED
7	1	M8-3 POLE MALE INSERT	PUR	BLACK
8	1	COUPLING NUT M8	BRASS	Ni-PLATED
9	1	M8-3/4 POLE MM SLEEVE	BRASS	Ni-PLATED
10	1	OVERMOULD	TPU	BLACK
11	1	LABEL	VINYL	YELLOW

TABLE 1  
 CABLE LENGTH TOLERANCES

LENGTH	TOLERANCE
0m-1m	+40 mm
>1m-5m	+60 mm
>5m-10m	+80 mm
>10m-20m	+140 mm
>20m-30m	+160 mm
>30m	+1% length

FUNCTIONAL SYMBOLS:  $\sqrt{A} = 0$ ,  $\sqrt{E} = 0$ ,  $\sqrt{V} = 0$

DIMENSION UNITS: mm

SCALE: 2:1

GENERAL TOLERANCES (UNLESS SPECIFIED):  
 ANGULAR TOL  $\pm 1.0^\circ$   
 4 PLACES  $\pm$   
 3 PLACES  $\pm$   
 2 PLACES  $\pm 0.05$   
 1 PLACE  $\pm 0.3$   
 0 PLACES  $\pm 0.5$

DRAFT WHERE APPLICABLE MUST REMAIN WITHIN DIMENSIONS

THIRD ANGLE PROJECTION

DRAWING: A3-SIZE

SERIES: 120066

MATERIAL NUMBER: SEE PART LIST

CUSTOMER: GENERAL MARKET

SHEET NUMBER: 1 OF 1

EC NO: 639067  
 DRWN: MDHARMANTI 2020/06/05  
 CHK'D: RSILLER 2020/06/08  
 APPR: RSILLER 2020/06/08

INITIAL REVISION:  
 DRWN: MDHARMANTI 2020/03/13  
 APPR: RSILLER 2020/03/18

DOCUMENT NUMBER: 1200669610

DOC TYPE: PSD

DOC PART: 000

REVISION: A4

THIS DRAWING CONTAINS INFORMATION THAT IS PROPRIETARY TO MOLEX ELECTRONIC TECHNOLOGIES, LLC AND SHOULD NOT BE USED WITHOUT WRITTEN PERMISSION

CURRENT REV DESC:

**molex**

CSE M12 M8 3P AC FE RA WSOR MA STR XM DE

PRODUCT CUSTOMER DRAWING