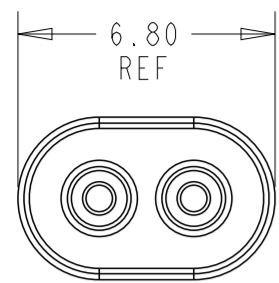
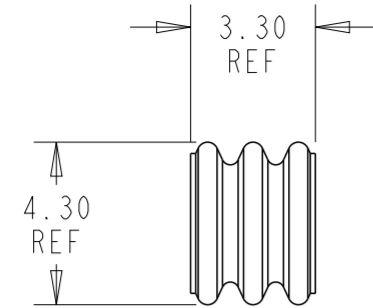


REVISIONS

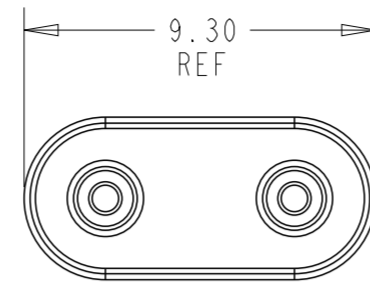
P	LTR	DESCRIPTION	DATE	DWN	APVD
A		FIRST RELEASE	02APR2019	L.C	D.Z
A1		REVISED PER ECR-21-117971	09NOV2021	SK	DZ
A2		REVISED PER ECR-23-164893	30JAN2023	SK	DZ



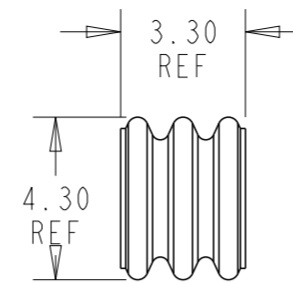
1-2 POSITION



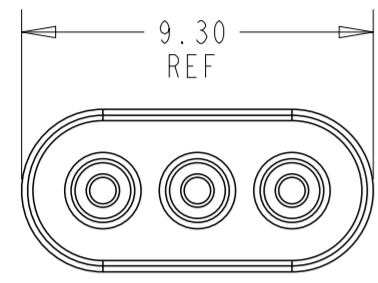
2321922-2



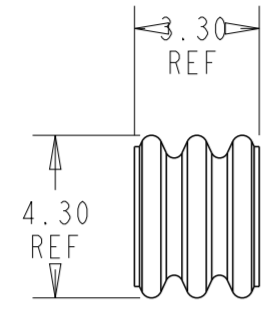
1-2 POSITION



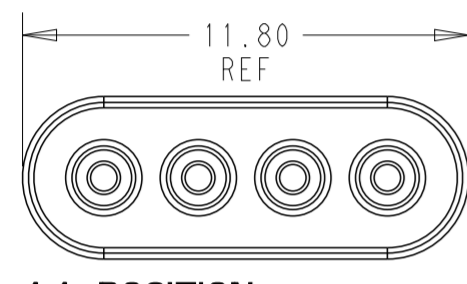
1-2321922-3 CENTER CAVITY BLOCKED



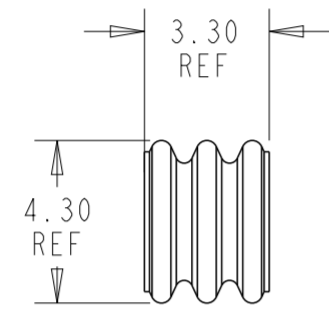
1-3 POSITION



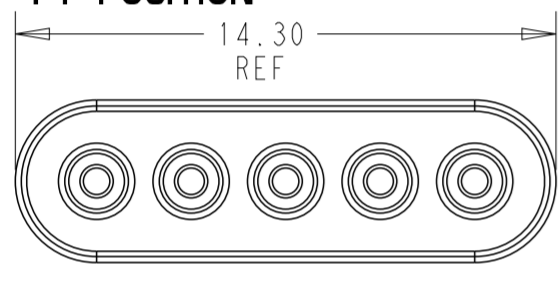
2321922-3



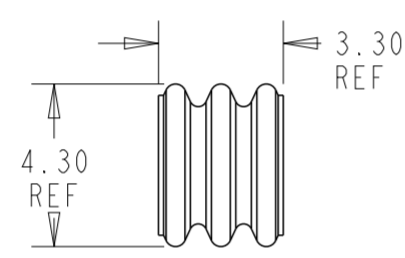
1-4 POSITION



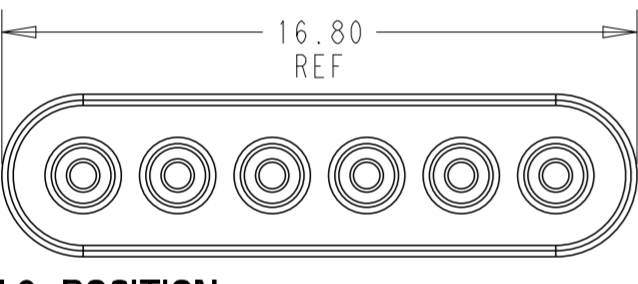
2321922-4



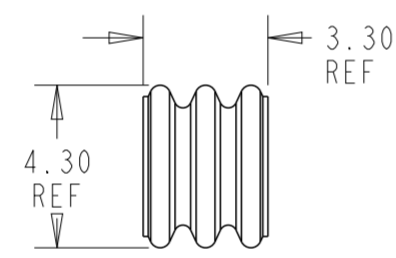
1-5 POSITION



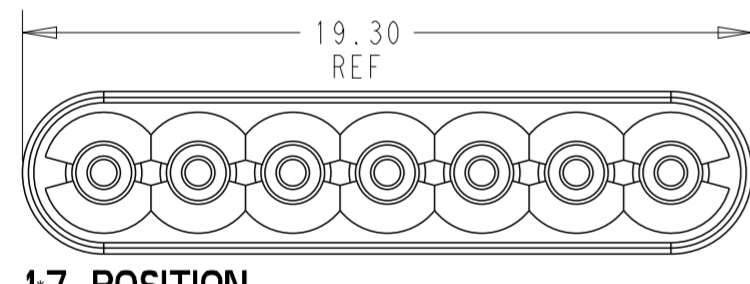
2321922-5



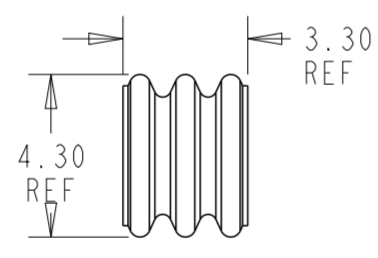
1-6 POSITION



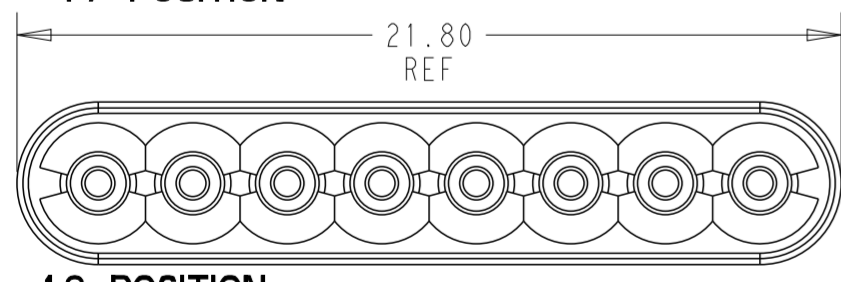
2321922-6



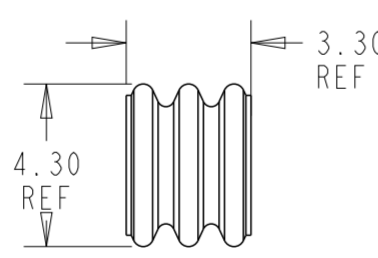
1-7 POSITION



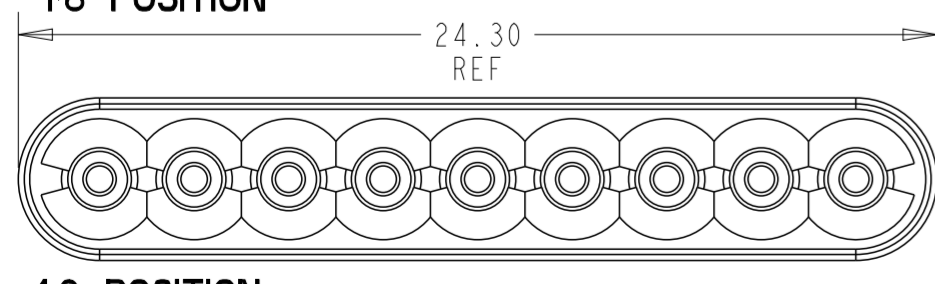
2321922-7



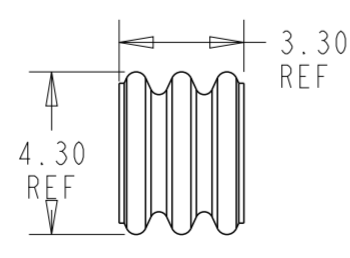
1-8 POSITION



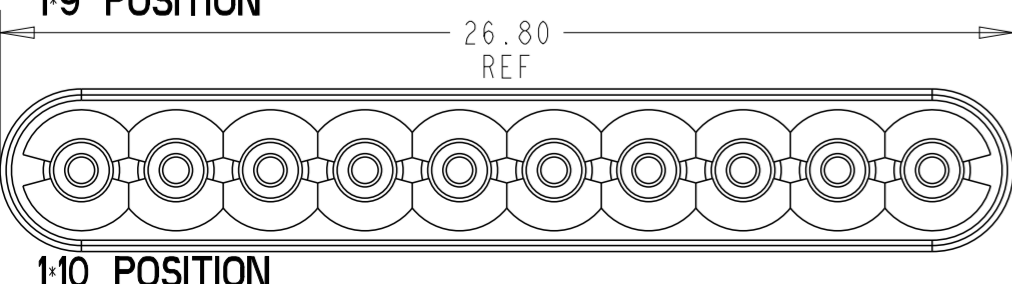
2321922-8



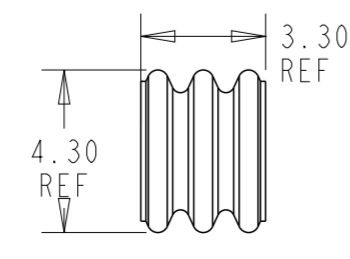
1-9 POSITION



2321922-9



1-10 POSITION



1-2321922-0

- 1. MATERIAL: SILICONE RUBBER, INHERENTLY LUBRICATED
COLOR: BLUE
- 2. FOR USE WITH 26 TO 22 AWG WIRE, INSULATION DIAMETER 1.30-1.60mm
- 3. MATING CONNECTOR P/N'S:
CAP HSG - 2321926-*/2321924-*/*-2366250-*/*-2366251-*/2443725-*/2443727-*/
PLUG HSG - 2321918-*/*-2366249-*/2443729-*
- 4. PRELIMINARY PART - NOT RELEASED FOR PRODUCTION

1*10	4 1-2321922-0
1*9	4 2321922-9
1*2	1-2321922-3
1*8	4 2321922-8
1*7	4 2321922-7
1*6	2321922-6
1*5	2321922-5
1*4	2321922-4
1*3	2321922-3
1*2	2321922-2
POSITIONS	PART NUMBER

THIS DRAWING IS A CONTROLLED DOCUMENT.

DIMENSIONS:	TOLERANCES UNLESS OTHERWISE SPECIFIED:	DWN	01FEB2019
mm	0 PLC ±	B. WEAVER	01FEB2019
	1 PLC ±	CHK	C. YI
	2 PLC ±	APVD	C. YI
	3 PLC ±	PRODUCT SPEC	108-143069
	4 PLC ±	APPLICATION SPEC	114-143067
	ANGLES ±	WEIGHT	-
	FINISH -	CUSTOMER DRAWING	SCALE 5:1
MATERIAL	1		

		TE Connectivity	
NAME REAR GANG SEAL, SDL 2.5 WATERPROOF			
SIZE	CAGE CODE	DRAWING NO	RESTRICTED TO
A2	00779	G-2321922	-
SHEET 1 OF 1		REV A2	