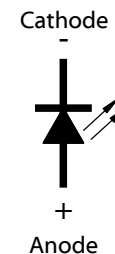
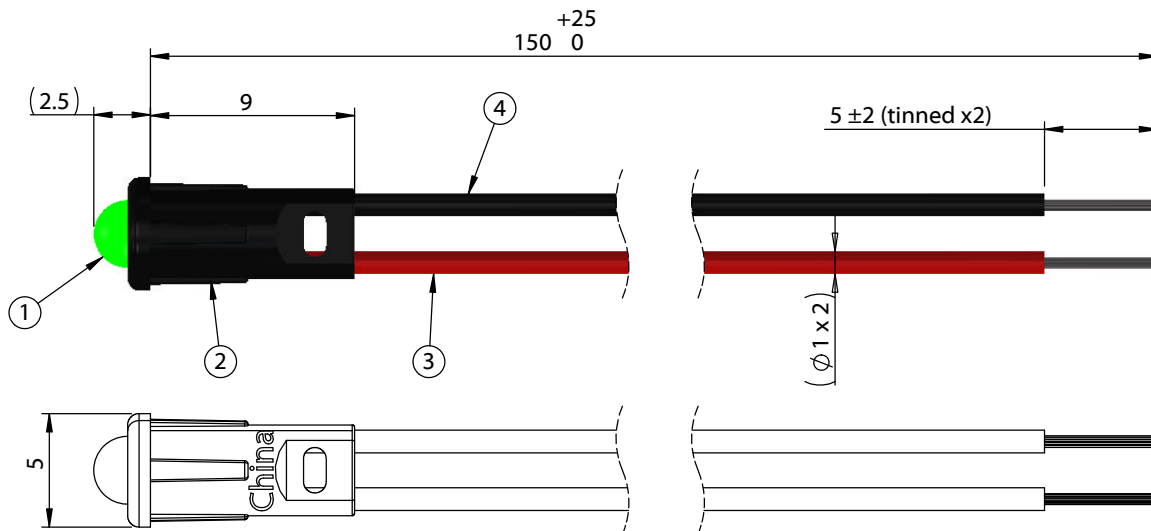
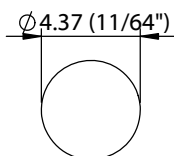


ITEM NO.	PART NUMBER	DESCRIPTION	QTY.	COMPONENT NOTES
1	57-00002	LED, Ø3x5.1 mm, green, InGaP, 2.2 V, 40°, 400 mcd	1	
2	24-00385	Overmold, LED panel	1	Nylon PA201, black
3	30-01772	Wire, hook-up, TS, 26 AWG, UL 11028, 600V, 105C, 1 mm, mPPE, red	1	
4	30-01773	Wire, hook-up, TS, 26 AWG, UL 11028, 600V, 105C, 1 mm, mPPE, black	1	

**Installation Details**

Recommended panel cutout:



**LED Properties @ 25 °C, 20 mA (IF)**

	Min.	Typ.	Max.
Forward voltage (VF)	2.0 V	2.2 V	2.4 V
Reverse Current (IR)	-	-	1 µA
Luminous Intensity (IV)	300 mcd	400 mcd	500 mcd
Viewing angle (2θ1/2)	-	40°	-
Forward current (IF)	-	-	20 mA
Peak forward current (IFP)	-	-	80 mA
Peak wavelength (λP)	560 nm	570 nm	573 nm
Operating temp	-40~80 °C		

**Wiring Diagram**

57-00002	Wire Color
+	Red
-	Black

Revision:	Date:	Description:	Prepared:	Notes:	<h1>TENSILITY</h1> <p>tel 1.541.323.3228 800 877.670.7118 fax 1.541.323.4202 web tensility.com</p>
A	10/12/2022	Initial release	Verified:	RoHS compliant	
			Dimensions are in millimeters. Tolerances: X: ± 0.5 mm X.X: ± 0.3 mm X.XX: ± 0.05 mm	Function test: no open, no short circuit, no intermittent	
				Description: Cable, 150 mm, green LED 57-00002 to 5 mm tinned, panel mount, 26 AWG UL11028	
				Size: A	Part number: 12-00007
				Scale: 3:1	Sheet 1 of 1

5

4

3

2

1