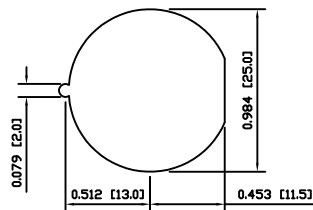
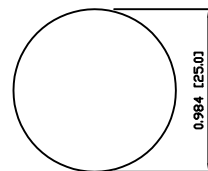


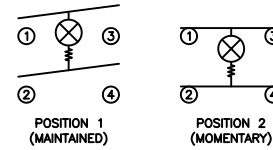
SUGGESTED PANEL CUTOUT



ALTERNATE PANEL CUTOUT



**SCHEMATIC**



**SPECIFICATIONS**

**FUNCTION:**  
2P1T OFF-(ON)

**RATINGS:**  
ANSI/UL 1054 and CAN/CSA C22.2 No.55 (E194579):  
16A 125VAC [UR, cUR]  
1/2HP 125VAC [UR, cUR]  
3/4HP 250VAC [UR, cUR]

EN 61058-1:2002:  
16(6)A 250V~ 1E4 T125/55 [ENEC14]  
10(4)A 250V~ 5E4 T125/55 [ENEC14]

**ILLUMINATION VOLTAGE:**  
125V

**CONTACT RESISTANCE:**  
Initial: 35mΩ Max. at 50VAC

**INSULATION RESISTANCE:**  
100MΩ Min. at 500VDC

**DIELECTRIC STRENGTH:**  
1,500VAC For 1 Minute

**ELECTRICAL LIFE:**  
6,000 Cycles [UR, cUR]  
10,000 Cycles [ENEC14]  
50,000 Cycles [ENEC14]

**TEMPERATURE:**  
Operating: -20°C to 105°C [UR, cUR]  
Operating: -20°C to 125°C [ENEC14]

**APPROVALS:**



**COLORS AND MARKINGS**

**BODY:**  
White

**ACTUATOR:**  
Transparent Green  
Glossy Finish

**MARKINGS:**  
None

**MARKING COLOR:**  
None

**MATERIALS**

**BODY:**  
Polyamide 6/6 (PA66), UL94 V-2

**ACTUATOR:**  
Polycarbonate (PC), UL94 V-2

**CONTACT CARRIER:**  
Polyamide 6/6 (PA66), UL94 V-2

**LAMP:**  
Neon Bulb

**RESISTOR:**  
Carbon Film Resistor

**SPRINGS:**  
Steel

**MOBILE CONTACT:**  
Silver Plated Copper

**CONTACTS:**  
Silver Plated Copper

**TERMINALS:**  
Silver Plated Copper

|                |      |          |     |
|----------------|------|----------|-----|
| BODY           | A    | 09/08/07 | CAB |
| COLORS         | A    | 10/05/10 | CAB |
| MATERIALS      | A    | 09/08/07 | CAB |
| SPECIFICATIONS | B    | 10/05/25 | CAB |
| REFERENCE      | REV. | DATE     | BY  |

THE INFORMATION CONTAINED IN THIS DOCUMENT IS PROPRIETARY TO E-SWITCH AND IS NOT TO BE COPIED OR TRANSFERRED

|      |                      |       |          |          |
|------|----------------------|-------|----------|----------|
| B    | REMOVED SEMKO RATING | 23314 | 04/16/18 | MJR      |
| A    | INITIAL RELEASE      | 18434 | 10/11/17 | CAB      |
| REV. | DESCRIPTION          | PCR   | DATE     | DRAWN BY |

|                      |            |
|----------------------|------------|
| DIMENSIONS           |            |
| INCHES [MILLIMETERS] |            |
| GENERAL TOLERANCES   |            |
| ±0.008 [±0.2] / ±1'  |            |
| SCALE                | PROJECTION |
| DRAWING NOT TO SCALE | 1st Angle  |

|                  |                   |          |  |
|------------------|-------------------|----------|--|
|                  |                   |          |  |
| PR142C2000-136   |                   |          |  |
| ITEM NUMBER      | DATE              | REVISION |  |
| 38-PR142C2000136 | NOVEMBER 17, 2010 | B        |  |