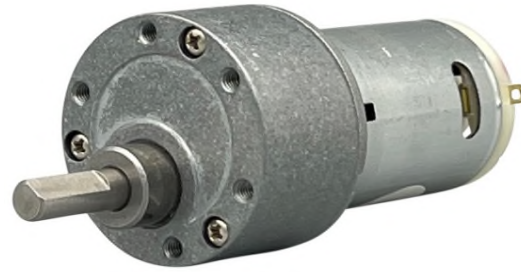




Our Spur Gear Motors are an inline solution providing ample torque output at various speeds. They are best for intermittent duty operation. With endless performance combinations, we have a fully tailored gear motor solution for you.

Discover alternative solutions!



Specifications			
Gearhead Type:	Spur: <i>Off-Set Shaft</i>	No-Load Speed:	200 rpm (+/- 10%)
Motor Type:	Carbon - Brushed	No-Load Current:	< 200 mA
Rated Voltage:	6V DC	Stall Torque:	5.88 kg.cm
Rated Speed:	162 rpm	Max. Power:	3.02 W
Rated Torque:	1.11 kg.cm	Max. Efficiency:	44%
Termination Style:	Terminals		

