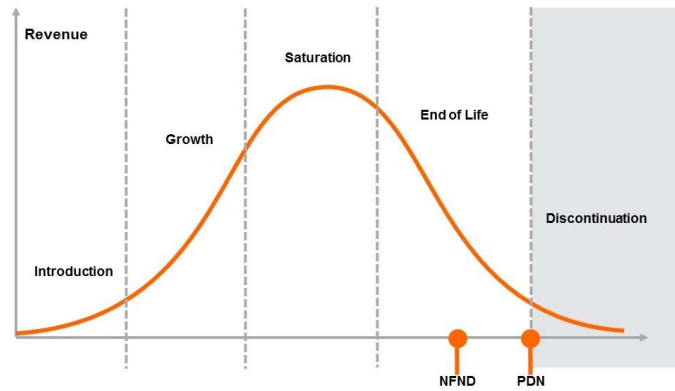


Light is OSRAM

Product Or Individual Q-Code Discontinuation (acc. JEDEC J-STD-048)
OS-PDN-2020-066

01 October 2020

Last order: 01 April 2021
Last delivery: 01 October 2021



Please direct your feedback to your local Sales office.

DISCONTINUED				NEW (REPLACEMENT)		
Device	Ordering Code	Brand	Reason for discontinuation	Device	Datasheet Ordering Code	Brand
GW QSLM31.EM-H4H6-XX31-1-65-R18-XX	Q65112A9646	OSCONIQ S 3030	Brightness increase – dim selections need to be phased-out	GW QSLM31.EM-H5H8-J1M1-1-65-R18-XX	Q65113A1744	OSCONIQ S 3030
GW QSLM31.EM-H4H8-XX32-1-65-R18-XX	Q65112A8846	OSCONIQ S 3030	Brightness increase – dim selections need to be phased-out	GW QSLM31.EM-H5H9-XX32-1U2A-65-R18	Q65113A1936	OSCONIQ S 3030
GW QSLM31.EM-H5H6-XX33-1U1V-65-S-LM-S3S	Q65113A0916	OSCONIQ S 3030	Brightness increase – dim selections need to be phased-out	GW QSLM31.EM-H6HW-XX33-1U1V-65-S-LM-S3S	Q65113A1827	OSCONIQ S 3030
GW QSLM31.EM-H5H6-XX53-1U1V-65-S-LM-S3S	Q65113A0919	OSCONIQ S 3030	Brightness increase – dim selections need to be phased-out	GW QSLM31.EM-H6HW-XX53-1U1V-65-S-LM-S3S	Q65113A1828	OSCONIQ S 3030
GW QSLM31.EM-H5H9-XX53-1V1W-65-R18-XX	Q65113A0724	OSCONIQ S 3030	Brightness increase – dim selections need to be phased-out	GW QSLM31.EM-H6HW-XX53-1V1W-65-R18-XX	Q65113A2063	OSCONIQ S 3030
GW QSLR31.EM-LWLY-XX35-C4E4-150-R18-XX	Q65113A1069	OSCONIQ S 3030	Brightness increase – dim selections need to be phased-out	GW QSLR31.EM-LXLZ-XX35-C4E4-150-R18-XX	Q65113A1829	OSCONIQ S 3030
GW QSLR31.PM-L1L3-XX33-C3D4-150-R18-XX	Q65113A0900	OSCONIQ S 3030	Brightness increase – dim selections need to be phased-out	GW QSLR31.PM-L2L4-XX33-C3D4-150-R18-XX	Q65113A1938	OSCONIQ S 3030