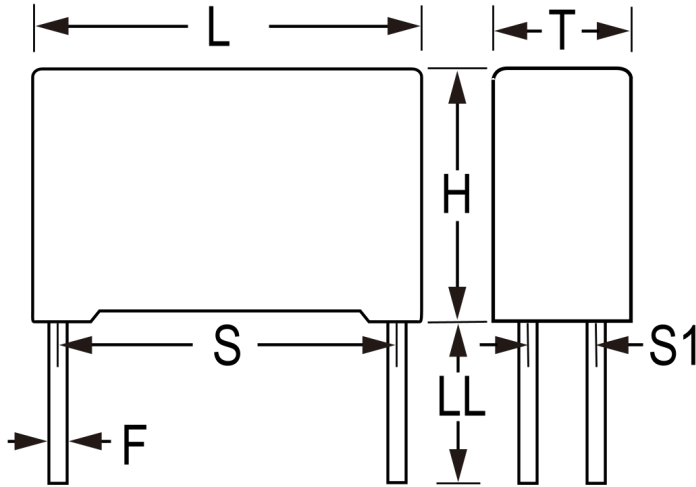


C4AEGBW5300A3FJ

Not for New Design

C4AE, Film, Metallized Polypropylene, DC Link, 30 uF, 5%, 450 VDC, 85°C, Lead Spacing = 37.5mm



Click [here](#) for the 3D model.

Dimensions

L	42mm +0.6/-0.7mm
H	40mm +0.2/-0.7mm
T	20mm +0.4/-0.7mm
S	37.5mm +/-0.4mm
S1	10.2mm +/-0.4mm
LL	6mm -2mm
F	1.2mm NOM
G	0.5mm NOM

Packaging Specifications

Packaging

Bulk, Box

General Information

Series	C4AE
Dielectric	Metallized Polypropylene
Style	Radial
RoHS	Yes
Termination	Tin
Lead	4 Wire Leads
AEC-Q200	No
Component Weight	39.4 g
Miscellaneous	Thermal Resistance = 20 C/W.
Notes	Not for new design – the replacement series is: C4AQ.

Specifications

Capacitance	30 uF
Capacitance Tolerance	5%
Voltage DC	450 VDC
Temperature Range	-40/+85°C
Rated Temperature	85°C
Insulation Resistance	1 GOhms
Max dV/dt	10 V/us
Resistance	4.1 mOhms (10kHz 70C)
Ripple Current	13 Amps (10kHz 70C), 298 Amps (Peak)
Inductance	30 nH