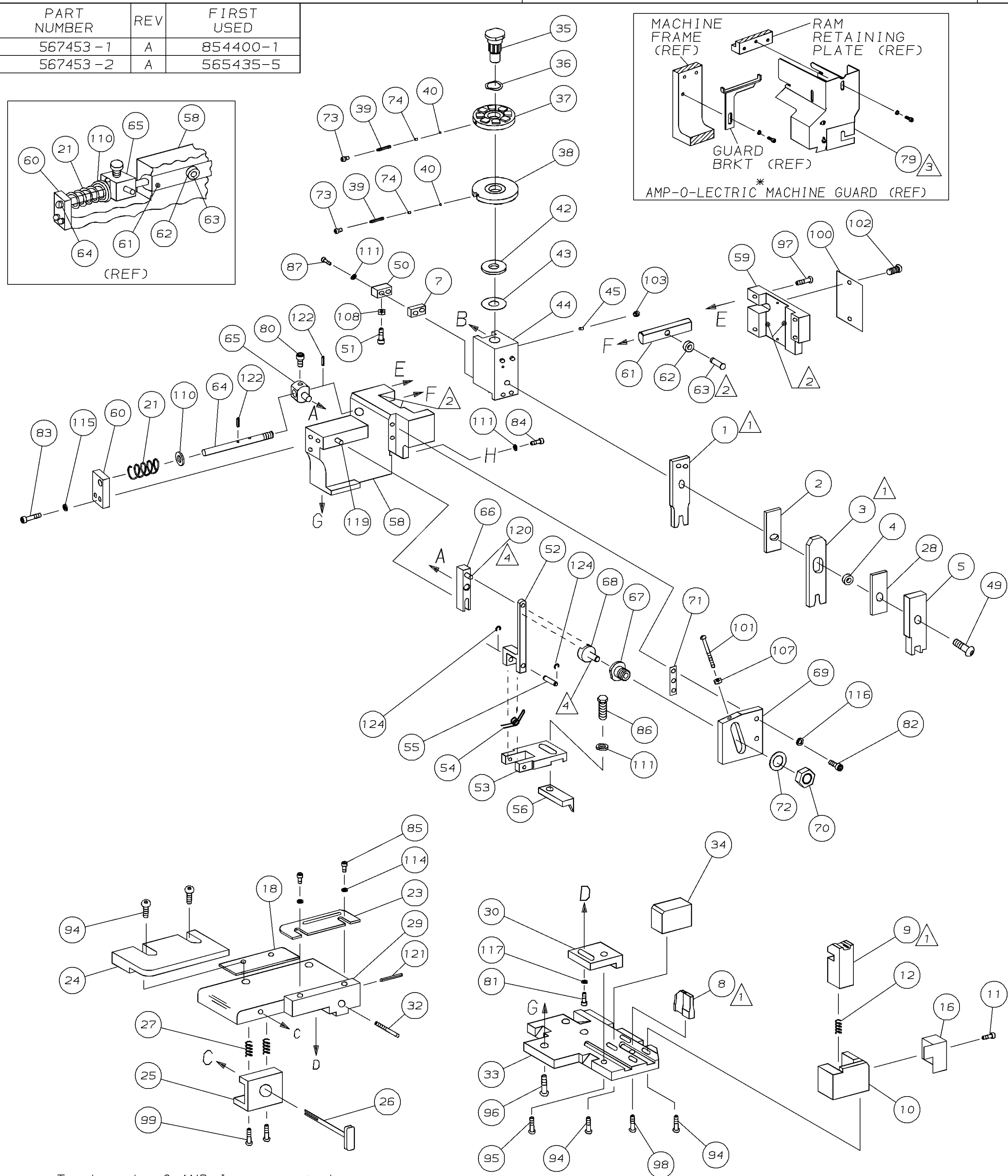
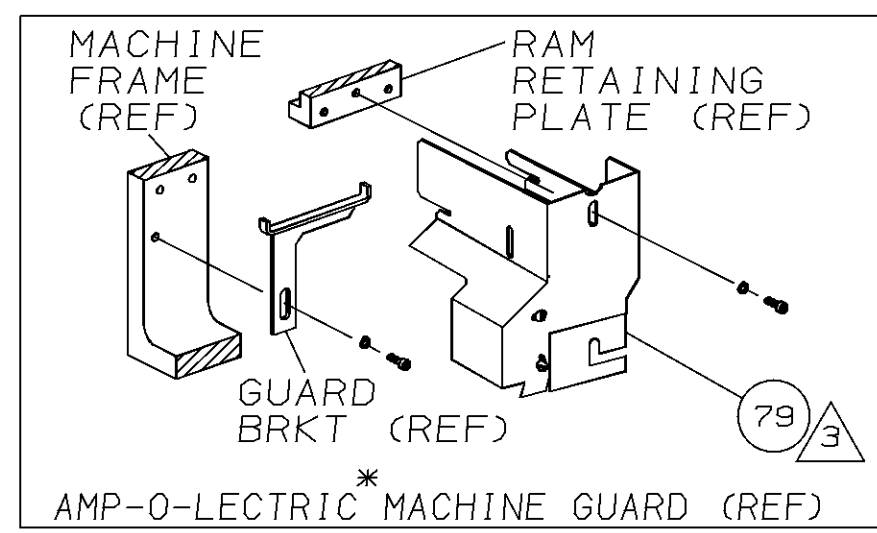
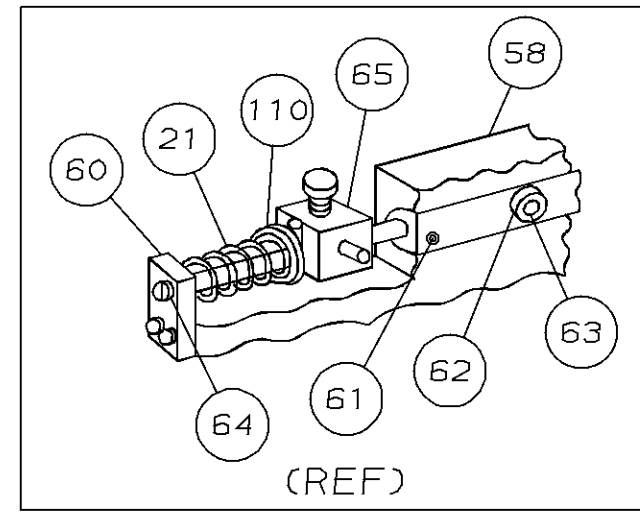
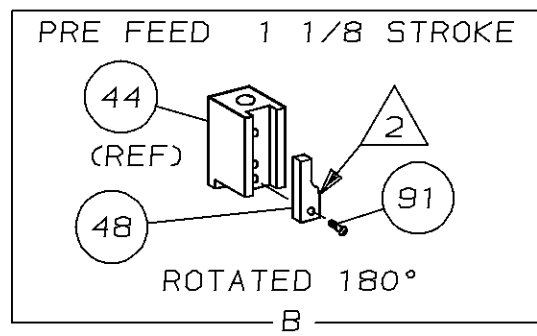
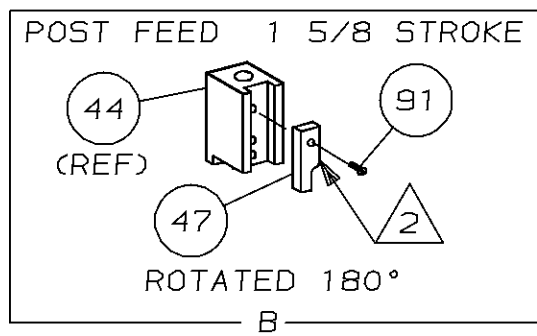


PART NUMBER	REV	FIRST USED
567453-1	A	854400-1
567453-2	A	565435-5



* Trademark of AMP Incorporated



- 1 RECOMMENDED SPARE PARTS.
- 2 GREASE LIGHTLY.
- 3 GUARD MUST BE IN PLACE WHEN OPERATING APPLICATOR IN AMP-O-LECTRIC MACHINE.
- 4 LUBRICATE DAILY USING NO. 20 MACHINE OIL.
- 5. ITEMS WITH QTY OF REF SPECIFIED (EXCEPT ITEM 79) ARE USED ON ITEM 46.
- 6 CUT TO LENGTH AT ASSY

TERMINAL NAME:
2.8 F.F. TAB FOR SINGLE WIRESEALING

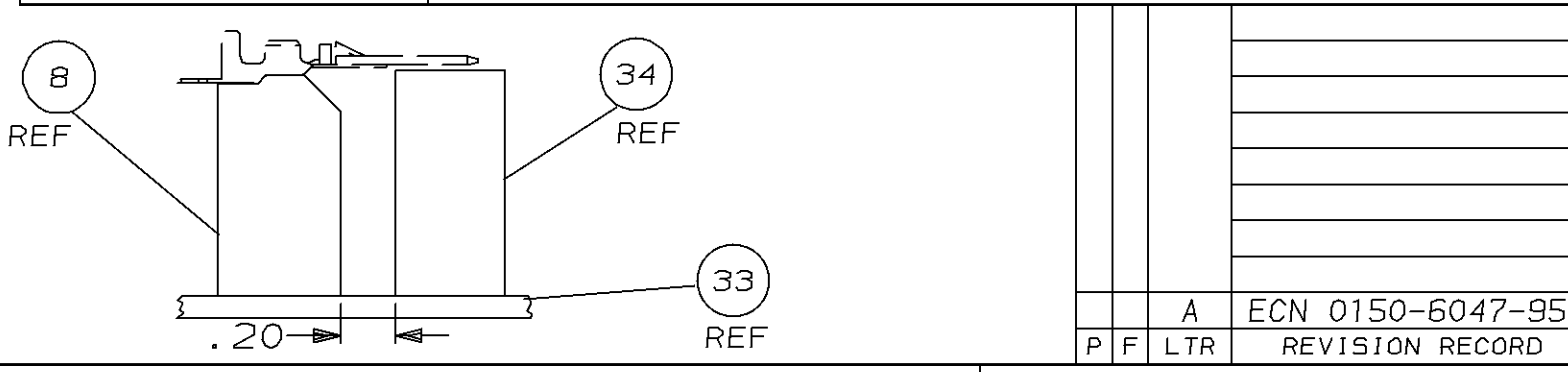
929948-2

CRIMPING DATA

PAD LTR	CRIMP HEIGHT	WIRE SIZE	
A	.059 ±.002	17	
B	.055 ±.002	18 1/2	
C	.052 ±.002	20	
D	NOT USED		
CRIMP	SIZE	TYPE	RANGE
WIRE	.080	F	20-17
INSUL	.145	0	.134 MAX
FEED	APPL INST	SET UP GAGE	LAYOUT
.532	A1 8040	458637-1	L1454
WIRE STRIP LENGTH -			
-1	LEADMAKER	MECH-POST FEED	
-2	AMP-O-LECTRIC	MECH-PRE FEED	

REF	REF	-	A	21045-3	RING, RET "C" (Ø.187) FD FING PIN	124
REF	REF	-	A	5-21028-1	PIN, SLT SPR (Ø.125x.50) ADJ ROD	122
1	1	-	A	4-21028-0	PIN, SLT SPR (Ø.093x.75) ST GDE PL	121
REF	REF	-	A	1-21030-1	PIN, DOWEL (Ø.187x.50) LEVER	120
REF	REF	-	A	1-21030-6	PIN, DOWEL (Ø.187x1.25) HOUSING	119
1	1	-	A	21024-5	WASHER, LOCK (#10) ADJ BLOCK	118
REF	REF	-	A	21024-5	WASHER, LOCK (#10) ADJ PLATE	116
REF	REF	-	A	21024-5	WASHER, LOCK (#10) FEED GDE ROD	115
2	2	-	A	21024-2	WASHER, LOCK (#4) FRONT STP GUIDE	114
1	1	-	A	21024-4	WASHER, LOCK (#8) STRIPPER	111
REF	REF	-	A	21899-4	WASHER, FLAT (Ø5/16) SCREW ADJ	110
1	1	-	A	21018-5	NUT, HEX (NO. 6) HOLDDOWN	108
REF	REF	-	A	21018-5	NUT, HEX (6-32) FEED ADJ	107
1	1	-	A	456567-1	SCR, SHLD (Ø.188x.12) STRIP	104
1	1	-	A	21009-2	SCR, SKT SET (1/4-20x.25 LW) RAM	103
2	2	-	A	21017-2	SCR, DRIVE (#2x.19) ID PLATE	102
REF	REF	-	A	6-23715-5	SCR, PAN HD (6-32x1.50) FEED ADJ	101
1	1	-	B	461264-1	PLATE, IDENTIFICATION	100
2	2	-	A	3-21002-0	SCR, BHC (10-32x.88) DRAG	99
1	1	-	A	22733-8	SCR, BHC (8-32x.38 LW) ANVIL	98
REF	REF	-	A	2-21002-9	SCR, BHC (10-32x.75) CAP	97
REF	REF	-	A	2-22733-8	SCR, BHC (1/4-20x.62) HOUSING	96
REF	REF	-	A	2-21002-7	SCR, BHC (10-32x.50) SG ADJ BLOCK	95
6	6	-	A	2-21002-2	SCR, BHC (8-32x.50) SHEAR	94
1	1	-	A	1-21002-7	SCR, BHC (6-32x.38) CAM	91
2	2	-	A	2-21000-8	SCR, SHC (8-32x.58) DEP-HOLD	87
1	1	-	A	2-22603-0	SCR, HEX HD (8-32x.31) FEED FINGER	86
2	2	-	A	1-21000-3	SCR, SHC (4-40x.5) F ST GUIDE	85
1	1	-	A	2-21000-7	SCR, SHC (8-32x.50) STRIPPER	84
REF	REF	-	A	3-21000-7	SCR, SHC (10-32x.75) FEED ROD GD	83
REF	REF	-	A	3-21000-6	SCR, SHC (10-32x.62) FD ADJ BLK	82
1	1	-	A	3-21000-4	SCR, SHC (10-32x.38) SG ADJ BL	81
REF	REF	-	A	3-21000-4	SCR, SHC (10-32x.38) PIVOT BLK	80
REF	-	-	B	455749-1	GUARD, WINDOW	79
2	2	-	A	690603-1	SPRING, ASSIST	74
2	2	-	A	23030-1	SCR, SHC (6-32x.25) CP DISC	73
REF	REF	-	A	458109-1	WASHER, SPECIAL	72
REF	REF	-	A	690517-1	SPACER	71

QTY	REF	U/M	DWG SIZE	PART NO	DESCRIPTION	ITEM NO
REVISION OF EACH ASSY NO (WHEN BLANK, USE DWG REVISION)						
PARTS LIST						



REF	REF	-	B	22594-8	NUT, HEX (1/2-20)	70
REF	REF	-	B	240628-1	PLATE, ADJUSTMENT	69
REF	REF	-	B	240626-1	SHAFT, PIVOT	68
REF	REF	-	B	240633-1	BUSHING	67
REF	REF	-	A	455680-1	LEVER, INTERMEDIATE	66
REF	REF	-	B	240629-1	BLOCK, PIVOT	65
REF	REF	-	A	240632-2	SCREW, ADJ FEED ROD	64
REF	REF	-	B	240659-3	PIN, CAM ROLLER	63
REF	REF	-	B	240658-1	ROLLER, CAM	62
REF	REF	-	B	454398-2	ROD, FEED	61
REF	REF	-	A	454178-1	GUIDE, FEED ROD	60
REF	REF	-	C	454220-1	CAP, RAM	59
REF	REF	-	D	454485-1	HOUSING	58
1	1	-	B	690542-2	PAWL, FEED	56
REF	REF	-	B	240624-1	PIN, FEED FINGER	55
REF	REF	-	B	691499-1	SPRING, FEED FINGER	54
REF	REF	-	B	690541-1	HOLDER, FEED FINGER	53
REF	REF	-	A	455679-1	LEVER, TERMINAL FEED ARM	52
1	1	-	A	811242-2	BUMPER, HOLDDOWN	51
1	1	-	A	690753-1	SPACER, TONKER	50
1	1	-	A	7-21002-9	BOLT, CRIMPER (5/16x1.00)	49
1	-	-	B	690602-5	CAM, PRE-FEED 1 1/8 ST	48
-	1	-	B	690501-4	CAM, POST-FEED 1 5/8 ST	47
1	1	-	B	459456-1	APPLICATOR, BASIC (SUBASSY)	46
1	1	-	A	690191-1	PLUG, NYLON	45
1	1	-	C	455673-1	RAM	44
1	1	-	A	690125-1	WASHER, LAMINATED	43
1	1	-	A	690124-1	WASHER, RAM	42
2	2	-	A	23241-6	BALL, STEEL	41
2	2	-	A	690170-1	SPRING, COMPRESSION	39
1	1	-	C	690142-1	DISC, INSULATION	38
1	1	-	B	690141-7	DISC, WIRE	37
1	1	-	A	22480-5	WASHER, SPRING	36
1	1	-	B	690212-1	POST, RAM	35
1	1	-	B	690786-2	SUPPORT, TERMINAL	34
REF	REF	-	D	455675-1	PLATE, BASE	33
1	1	-	A	690432-3	SCREW, ADJUSTMENT	32
REF	REF	-	B	455689-1	BLOCK, STRIP GUIDE ADJ	30
1	1	-	C	455671-1	PLATE, STRIP GUIDE	29
1	1	-	C	1-455888-5	SPACER, FRONT SHEAR DEP	28
2	2	-	A	1-22284-0	SPRING, DRAG	27
1	1	-	B	690546-1	LEVER, DRAG RELEASE	26
1	1	-	B	240792-1	DRAG, TERMINAL	25
1	1	-	D	6-690504-3	GUIDE, STRIP (REAR)	24
1	1	-	A	690438-1	GUIDE, STRIP (FRONT)	23
-	1	-	B	690472-2	STRIPPER	22
REF	REF	-	A	4-22284-9	SPRING, FEED RETURN	21
1	-	-	B	458950-1	STRIPPER, WIRE STOP	20
1	-	-	B	458949-1	STRIPPER	19
1	1	-	B	843013-3	SPACER, STRIP GUIDE	18
1	1	-	B	691667-1	GUARD, CHIP (FRONT)	16
1	1	-	C	1-455889-4	DEPRESSOR, SHEAR (FRONT)	5
1	1	-	B	2-238011-2	SPACER, BLOCK CRIMPER	4
1	1	-	C	3-683454-2	CRIMPER, INSULATION	3
1	1	-	C	1-455888-4	SPACER, CRIMPER	2
1	1	-	C	1-456405-4	CRIMPER, WIRE	1

QTY	REF	U/M	DWG SIZE	PART NO	DESCRIPTION	ITEM NO
REVISION OF EACH ASSY NO (WHEN BLANK, USE DWG REVISION)						
PARTS LIST						

DIMENSIONS IN INCHES. DO NOT SCALE PRINT. TOLERANCES UNLESS OTHERWISE SPECIFIED:

2 PLC DEC ±.02
3 PLC DEC ±.01
4 PLC DEC ±.005

ANGLES ± -
SURF TEXTURE: ✓
REMOVE BURRS, BREAK SHARP EDGES R.015 MAX

MATL	HT TR	FIN
-	-	-

DR P. MATHIAS 5/6/92 APP B. WOLFE 5-13-92
CHK 5-11-92 REL 5-15-92 C. ERISMAN M. ENTERLINE

NAME: SIDE FEED HDM APPLICATOR MACHINE REF: MINI APPL

SCALE: D DWG NO: 567453 SHEET: 1 OF 1 REV: A

THIS DRAWING IS A CONTROLLED DOCUMENT FOR AMP INCORPORATED. IT IS SUBJECT TO CHANGE AND THE CONTROLLING ENGINEERING ORGANIZATION SHOULD BE CONTACTED FOR THE LATEST REVISION.

THIS INFORMATION IS CONFIDENTIAL AND IS DISCLOSED TO YOU ON CONDITION THAT NO FURTHER DISCLOSURE IS MADE BY YOU TO OTHER THAN AMP PERSONNEL WITHOUT WRITTEN AUTHORIZATION FROM AMP INCORPORATED, HARRISBURG, PA.

LOC A
DIST 66

LEADMAKER
T TERMINATING UNIT

AMP-O-LECTRIC
K TERMINATING UNIT