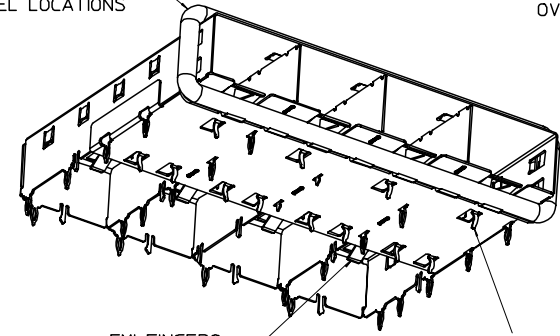
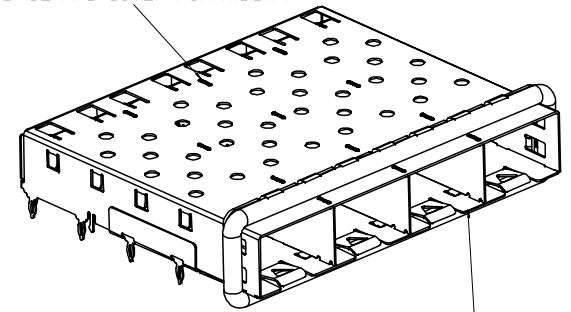


360° ELASTOMER GASKET
COMPLIES WITH (SFP) MSA
BOARD AND BEZEL LOCATIONS

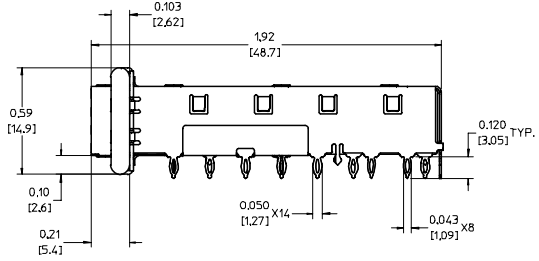
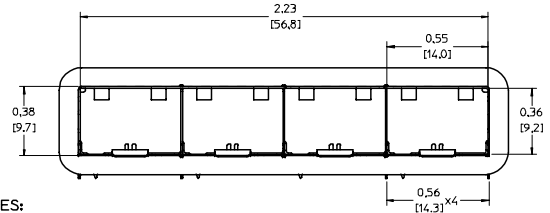
INNER WALL TABS ARE COINED
OVER BASE AND COVER FOR RIGIDITY



EMI FINGERS
CONTACT ADAPTER
12 UNDER BELLY EMI PINS



DIMENSIONS OF EACH INNER CAGE DESIGNED
TO FUNCTION WITH SMALL FORM-FACTOR
PLUGGABLE (SFP) TRANSCEIVER



NOTES:

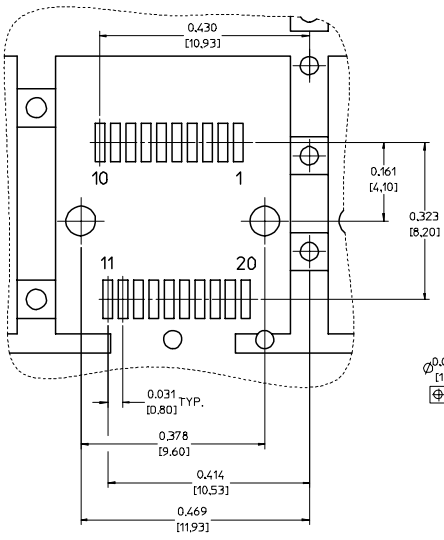
1. PRESS FIT LEGS 0.120" LONG-
0.062 [1.57] MINIMUM PCB THICKNESS. FOR SINGLE SIDED USE ONLY.
2. MATERIAL: COPPER ALLOY
PLATING: NONE
- NOTE: A PRE-PLATED NICKEL VERSION IS AVAILABLE.
REFER TO DOCUMENT SD-74728-420
3. REFERENCE DOCUMENTS:
PRODUCT SPECIFICATION: PS-74728-000
COSMETIC SPECIFICATIONS: WI-HP-7-2774 AND WI-HPA-7-0093
TEST SUMMARY: TS-74728-0415
4. MATES WITH SERIES 74728. LIGHT PIPE COVER ASSEMBLY.
5. THIS PART MEETS THE RESTRICTION OF HAZARDOUS SUBSTANCES IN
ELECTRICAL AND ELECTRONIC EQUIPMENT (ROHS) DIRECTIVE (2002/95/EC).

EC NO: USY2006-0225 DRW:KSIMONSO006/01/24 CHKD:BRUSSELL2006/01/24 APPR:BRUSSELL2006/01/25	QUALITY SYMBOLS	GENERAL TOLERANCES (UNLESS SPECIFIED)	SCALE 3:1	DESIGN UNITS METRIC	THIRD ANGLE PROJECTION	REVISE ON CAD ONLY
	0.0 0.0	4 PLACES ± --- ± --- 3 PLACES ± --- ± .005 2 PLACES ± 0.13 ± .01 1 PLACE ± 0.25 ± ---	DIMENSION STYLE IN/MM DRAWN BY DATE KSIMONSO 2004/08/27	TITLE 1X4 SFP CAGE ASSEMBLY W/ PRESS FIT PINS, FRAME W/ TABS		
		ANGULAR ± 1°	CHECKED BY DATE BRUSSELL 2004/09/23	MOLEX INCORPORATED		
		DRAFT WHERE APPLICABLE MUST REMAIN WITHIN DIMENSIONS	APPROVED BY DATE BRUSSELL 2004/09/23	MATERIAL NO. 739270416 DOCUMENT NO. SD-73927-416	SHEET NO. 1 OF 4	
		THIS DRAWING CONTAINS INFORMATION THAT IS PROPRIETARY TO MOLEX INCORPORATED AND SHOULD NOT BE USED WITHOUT WRITTEN PERMISSION				

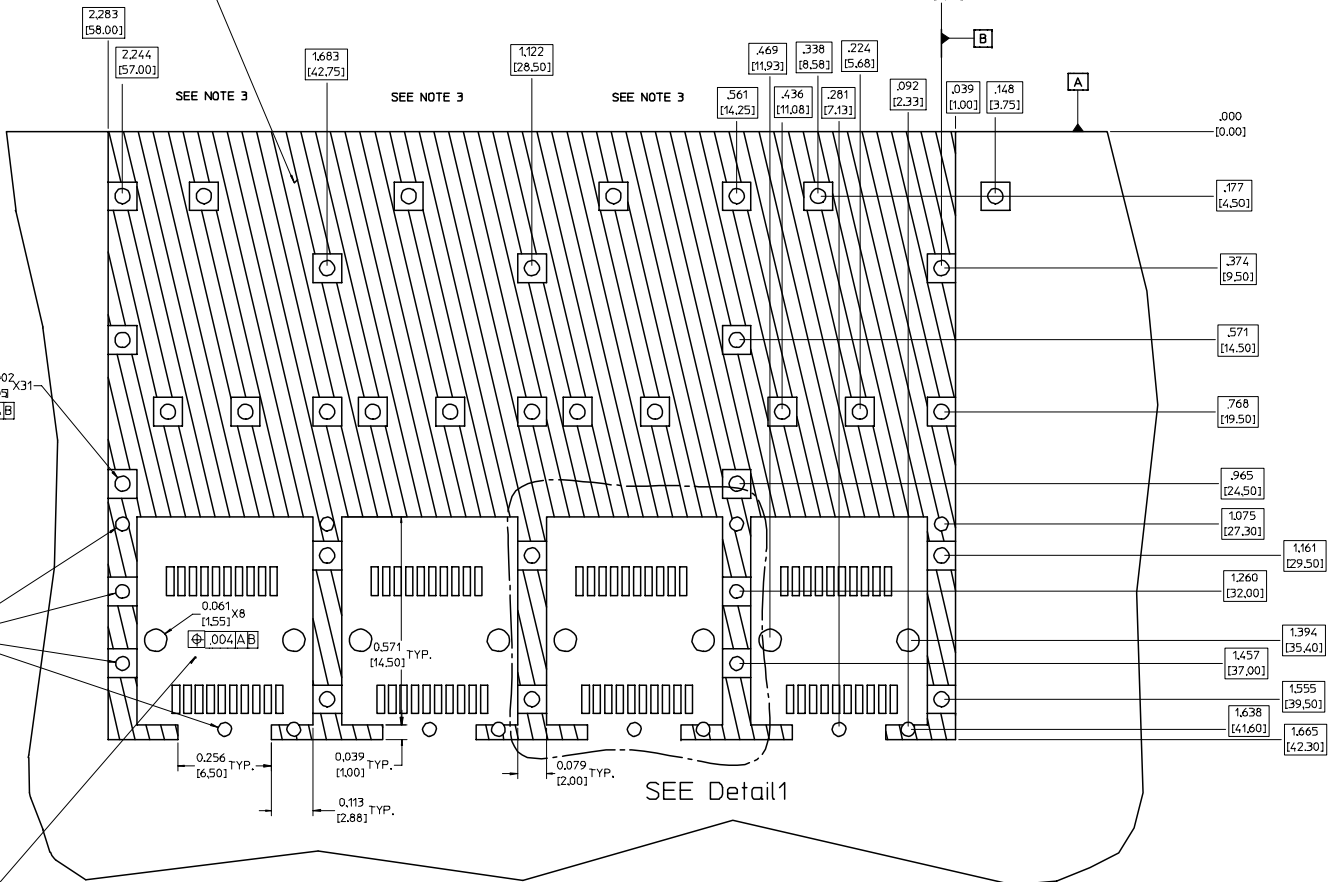
20 19 18 17 16 15 14 13 12 11 10 9 8 7 6 5 4 3 2 1

PCB LAYOUT FOR SINGLE SIDE MOUNTING

Detail1
SCALE 8:1



CROSS-HATCHED AREA DENOTES COMPONENT AND TRACE KEEP-OUT (EXCEPT CHASSIS GROUND)



THIS AREA DENOTES COMPONENT KEEP-OUT (TRACES ALLOWED)

SMALLER HOLE ON THESE FOUR ROWS ONLY

SEE NOTE 3

SEE NOTE 3

SEE NOTE 3

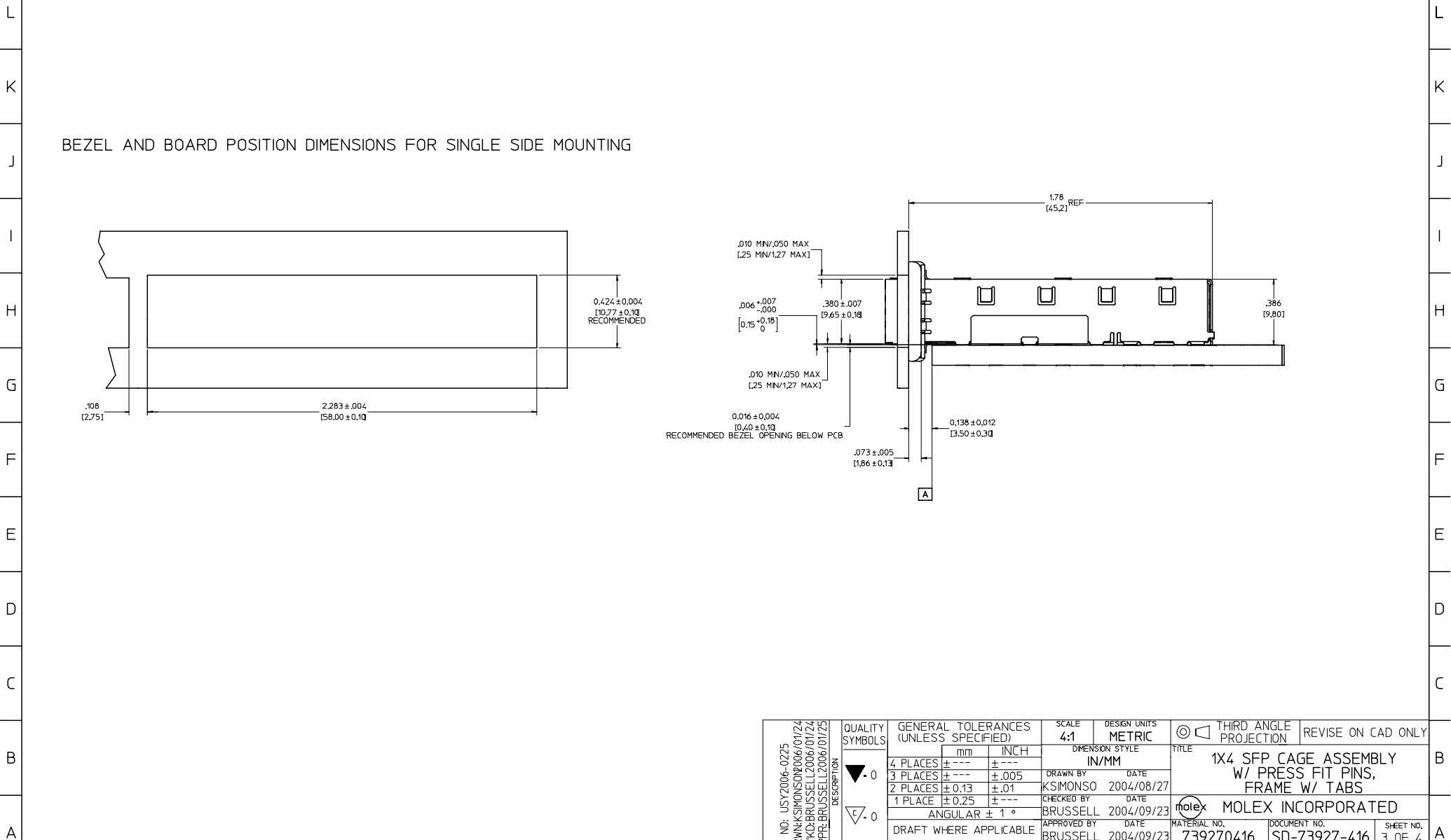
SEE Detail1

- NOTES:
- PADS AND VIAS GO TO CHASSIS GROUND, (34 PLACES). RECOMMENDED PADS TO BE 2mm SQUARE.
 - PLATING OPTIONAL FOR THROUGH HOLES, (12 PLACES).
 - HOLE PATTERN REPEATS FOR EACH PORT, SPACING BETWEEN PORTS IS 14.25mm.

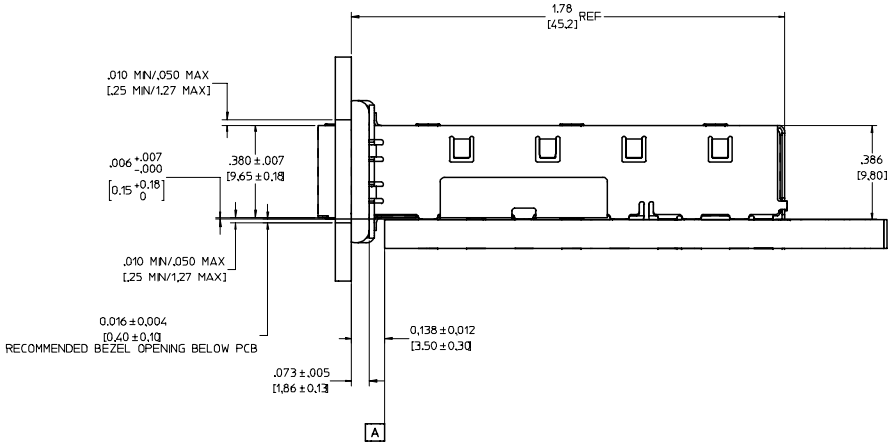
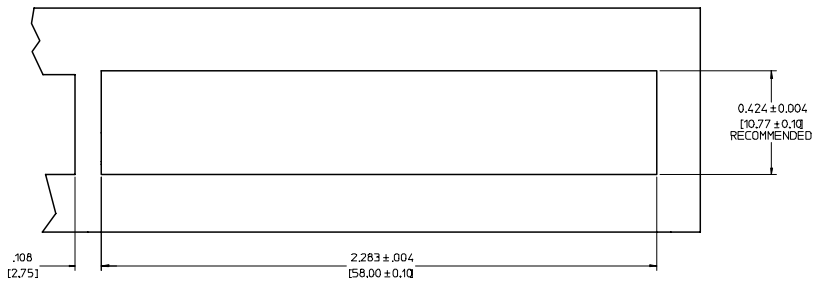
EC NO: USY2006-0225 DRW:KSIMONSON006/01/24 CHKD:BRUSSELL2006/01/24 APPR:BRUSSELL2006/01/25	QUALITY SYMBOLS	GENERAL TOLERANCES (UNLESS SPECIFIED)	SCALE 6:1	DESIGN UNITS METRIC	THIRD ANGLE PROJECTION	REVISE ON CAD ONLY
	0 0	4 PLACES ± --- ± --- 3 PLACES ± --- ± .005 2 PLACES ± 0.13 ± .01 1 PLACE ± 0.25 ± ---	DIMENSION STYLE IN/MM DRAWN BY KSIMONSON DATE 2004/08/27	TITLE 1X4 SFP CAGE ASSEMBLY W/ PRESS FIT PINS, FRAME W/ TABS		
		ANGULAR ± 1 ° DRAFT WHERE APPLICABLE MUST REMAIN WITHIN DIMENSIONS	CHECKED BY BRUSSELL DATE 2004/09/23	MOLEX INCORPORATED		
	REV B	APPROVED BY BRUSSELL DATE 2004/09/23	MATERIAL NO. 739270416 DOCUMENT NO. SD-73927-416	SHEET NO. 2 OF 4	THIS DRAWING CONTAINS INFORMATION THAT IS PROPRIETARY TO MOLEX INCORPORATED AND SHOULD NOT BE USED WITHOUT WRITTEN PERMISSION	

19 18 17 16 15 14 13 12 11 10 9 8 7 6 5 4 3 2 1

20 19 18 17 16 15 14 13 12 11 73927 9 8 7 6 5 4 3 2 1



BEZEL AND BOARD POSITION DIMENSIONS FOR SINGLE SIDE MOUNTING



EC NO: USY2006-0225 DRW:K.SIMONSON08/01/24 CHK:D.BRUSSELL2006/01/24 APPR:R.BRUSSELL2006/01/25 REV DESCRIPTION	QUALITY SYMBOLS	GENERAL TOLERANCES (UNLESS SPECIFIED)		SCALE 4:1	DESIGN UNITS METRIC	THIRD ANGLE PROJECTION	REVISE ON CAD ONLY
	▽ .0 ∇ .0	4 PLACES	mm	INCH	DIMENSION STYLE IN/MM		TITLE 1X4 SFP CAGE ASSEMBLY W/ PRESS FIT PINS, FRAME W/ TABS MOLEX INCORPORATED
		3 PLACES	± .005	± .005	DRAWN BY K.SIMONSON	DATE 2004/08/27	
		2 PLACES	± 0.13	± .01	CHECKED BY BRUSSELL	DATE 2004/09/23	
	1 PLACE	± 0.25	± .01	APPROVED BY BRUSSELL	DATE 2004/09/23	MATERIAL NO. 739270416	DOCUMENT NO. SD-73927-416
		ANGULAR ± 1°		DRAFT WHERE APPLICABLE MUST REMAIN WITHIN DIMENSIONS		SHEET NO. 3 OF 4	
THIS DRAWING CONTAINS INFORMATION THAT IS PROPRIETARY TO MOLEX INCORPORATED AND SHOULD NOT BE USED WITHOUT WRITTEN PERMISSION							

20 | 19 | 18 | 17 | 16 | 15 | 14 | 13 | 12 | 11 | 73927 | 9 | 8 | 7 | 6 | 5 | 4 | 3 | 2 | 1

DATE	REV	CHANGES	COMMENTS
2004/08/27	1	PRELIMINARY DOCUMENT	N/A
2004/09/23	A	INITIAL RELEASE	N/A
2006/01/20	B	UPDATED NOTES	DOCUMENT CHANGE ONLY

L
K
J
I
H
G
F
E
D
C
B
A

EC NO: USY2006-0225 DRW:KSIMONSO06/01/24 CHK:D:BRUSSELL2006/01/24 APPR:BRUSSELL2006/01/25 REV B	QUALITY SYMBOLS	GENERAL TOLERANCES (UNLESS SPECIFIED)	SCALE 1:1	DESIGN UNITS METRIC	THIRD ANGLE PROJECTION	REVISE ON CAD ONLY																												
	▼ .0 ∇ .0	<table border="1"> <thead> <tr> <th></th> <th>mm</th> <th>INCH</th> </tr> </thead> <tbody> <tr> <td>4 PLACES</td> <td>± ---</td> <td>± ---</td> </tr> <tr> <td>3 PLACES</td> <td>± ---</td> <td>± .005</td> </tr> <tr> <td>2 PLACES</td> <td>± 0.13</td> <td>± .01</td> </tr> <tr> <td>1 PLACE</td> <td>± 0.25</td> <td>± ---</td> </tr> </tbody> </table>		mm	INCH	4 PLACES	± ---	± ---	3 PLACES	± ---	± .005	2 PLACES	± 0.13	± .01	1 PLACE	± 0.25	± ---	<table border="1"> <thead> <tr> <th colspan="2">DIMENSION STYLE</th> </tr> </thead> <tbody> <tr> <td>DRAWN BY</td> <td>DATE</td> </tr> <tr> <td>KSIMONSO</td> <td>2004/08/27</td> </tr> <tr> <td>CHECKED BY</td> <td>DATE</td> </tr> <tr> <td>BRUSSELL</td> <td>2004/09/23</td> </tr> <tr> <td>APPROVED BY</td> <td>DATE</td> </tr> <tr> <td>BRUSSELL</td> <td>2004/09/23</td> </tr> </tbody> </table>	DIMENSION STYLE		DRAWN BY	DATE	KSIMONSO	2004/08/27	CHECKED BY	DATE	BRUSSELL	2004/09/23	APPROVED BY	DATE	BRUSSELL	2004/09/23	TITLE 1X4 SFP CAGE ASSEMBLY W/ PRESS FIT PINS, FRAME W/ TABS	MOLEX INCORPORATED
			mm	INCH																														
		4 PLACES	± ---	± ---																														
3 PLACES	± ---	± .005																																
2 PLACES	± 0.13	± .01																																
1 PLACE	± 0.25	± ---																																
DIMENSION STYLE																																		
DRAWN BY	DATE																																	
KSIMONSO	2004/08/27																																	
CHECKED BY	DATE																																	
BRUSSELL	2004/09/23																																	
APPROVED BY	DATE																																	
BRUSSELL	2004/09/23																																	
DRAFT WHERE APPLICABLE MUST REMAIN WITHIN DIMENSIONS	THIS DRAWING CONTAINS INFORMATION THAT IS PROPRIETARY TO MOLEX INCORPORATED AND SHOULD NOT BE USED WITHOUT WRITTEN PERMISSION	MATERIAL NO. 739270416 DOCUMENT NO. SD-73927-416 SHEET NO. 4 OF 4																																

19 | 18 | 17 | 16 | 15 | 14 | 13 | 12 | 11 | 10 | 9 | 8 | 7 | 6 | 5 | 4 | 3 | 2 | 1