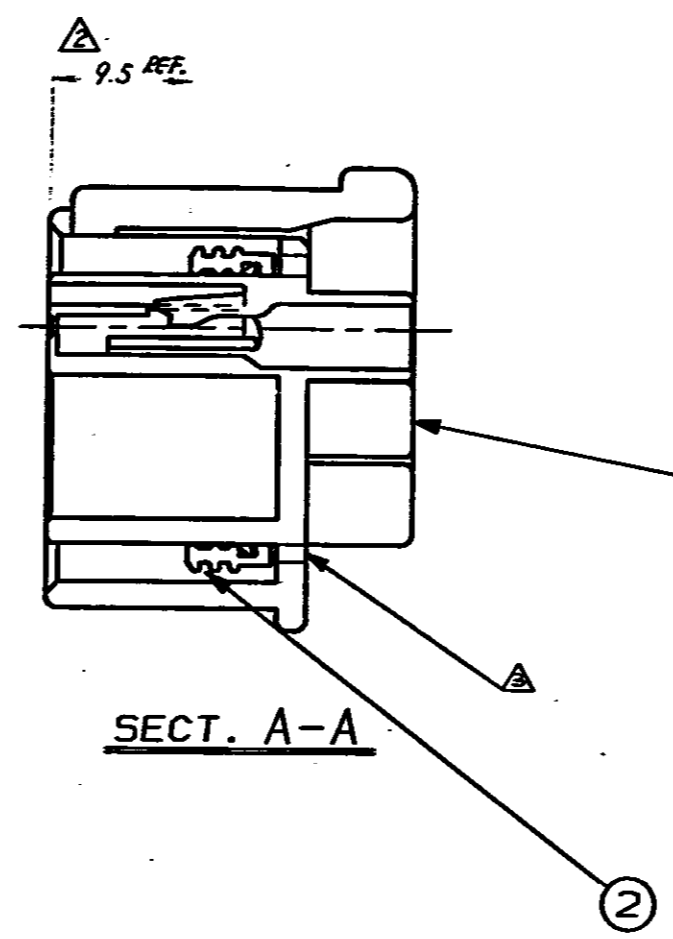
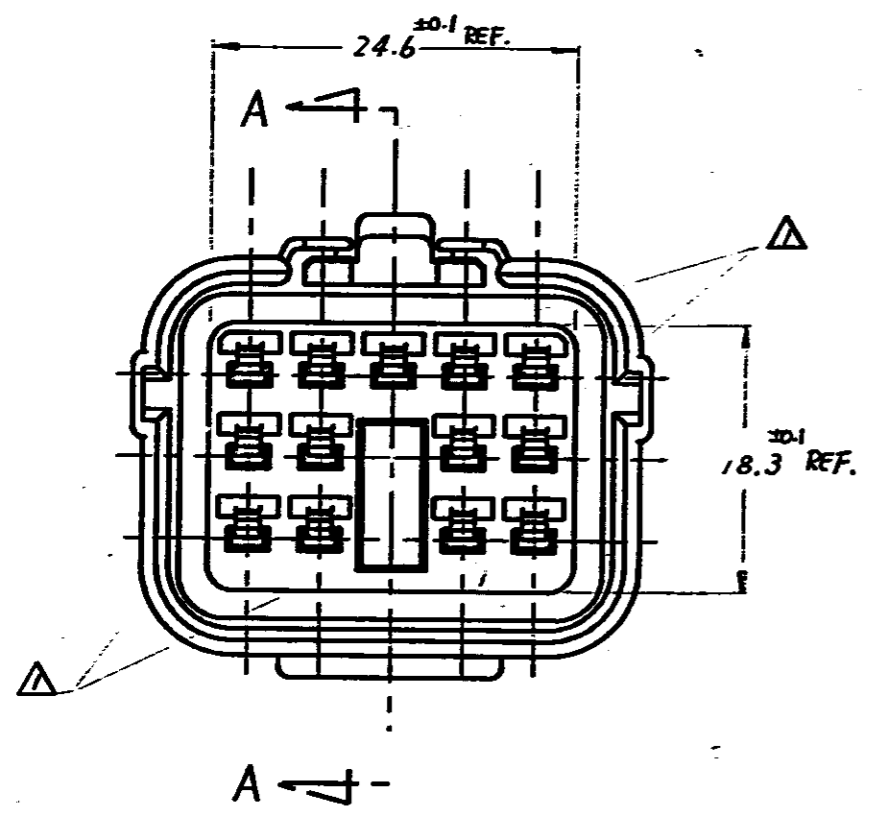


THIS INFORMATION IS CONFIDENTIAL AND IS DISCLOSED TO YOU ON CONDITION THAT NO FURTHER DISCLOSURE BE MADE BY YOU TO OTHER THAN AMP PERSONNEL WITHOUT WRITTEN AUTHORIZATION FROM AMP (JAPAN) LTD. DIMENSIONS IN MILLIMETERS. DO NOT SCALE PRINT.



注；  
 △ シールリングに傷、汚れが無い事。  
 △ シールリングは図の様に HSG 内突起に確実に装着されていること。  
 △ 前面及び背面の窓(6カ所)より見てよじれ、ゆくれ等がないこと。

NOTE;  
 △ NO SCORES, DUST ON SEAL RING ARE PERMISSIBLE  
 △ SEAL RING MUST BE FIXED COMPLETELY BY STOPPERS OF HOUSING  
 △ NO TWIST OF ASSEMBLED SEAL RING IS PERMISSIBLE

1	A3	173893	SEAL RING	2
1	A1	173890-2	13P PLUG HOUSING	1
QTY	DWG NUMBER	NAME	ITEM NO	

REQUIRED PER ASSEMBLY				UNLESS OTHERWISE SPECIFIED - DECIMALS: ±0.15 ANGLES: ±1°			
				<b>← CRITICAL DIMENSIONS</b>			
MOLD SPEC.		115-5000		DR <i>S. Shindou</i>		APP <i>K. Oda</i> 2/1/93	
MOLD No.		---		CHK <i>J. Nakata</i>		REL <i>K. Oda</i> 2/1/93	
MATERIAL		---		<b>AMP</b> AMP (JAPAN), LTD. Tokyo, Japan			
COLOR		BLACK.		LOC		SIZE	NUMBER
NET WEIGHT OR VOLUME		---		J A3		173891	
SCALE		NAME		REV		0	
2-1		ECONOSEAL J-MK I 13P PLUG ASS'Y					

DATE	BY	CHK	DATE	BY	CHK	DATE	BY	CHK	DATE		
1993			2/1								
RELEASED 004-93			DATE			REVISION RECORD			ECN		