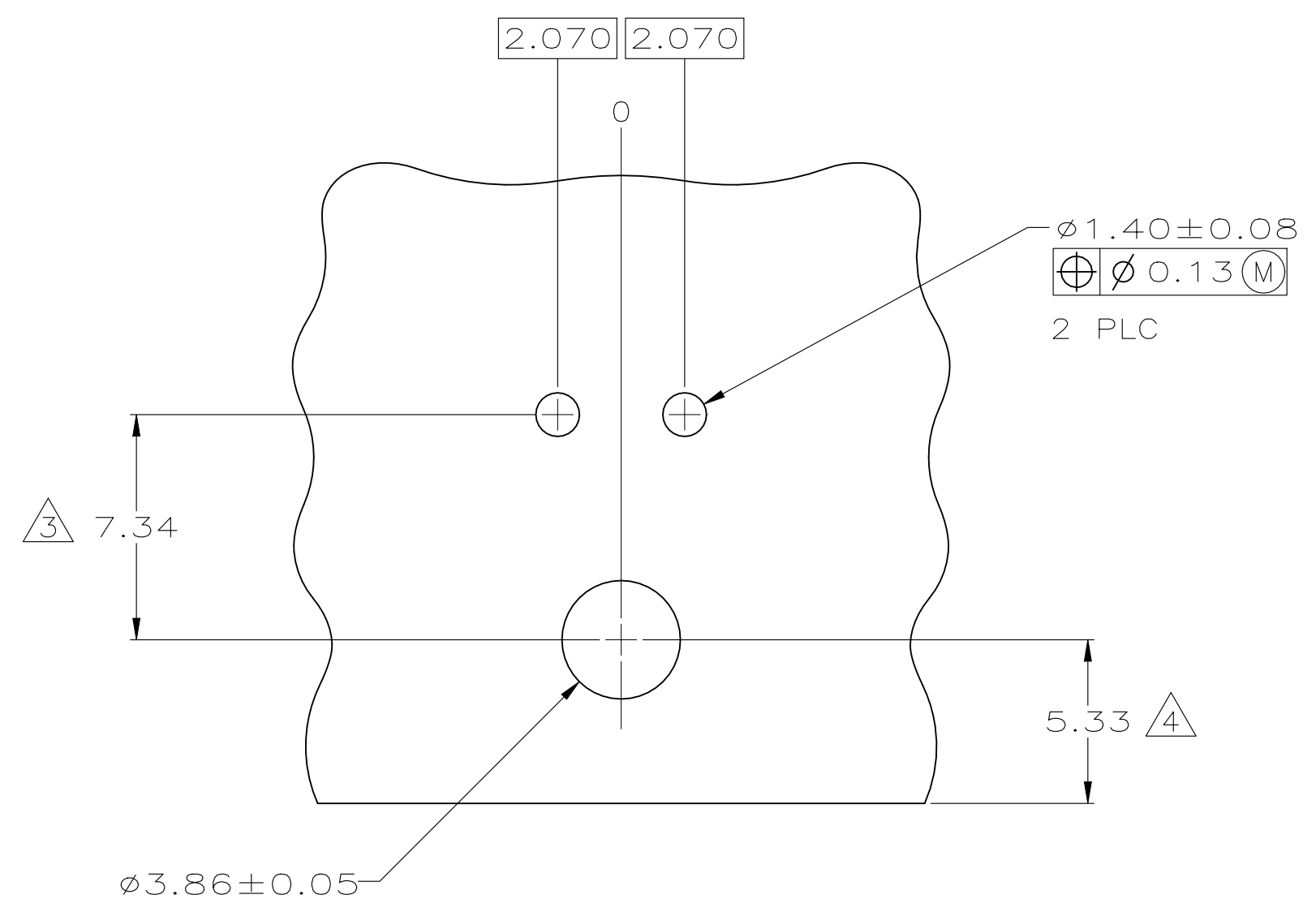
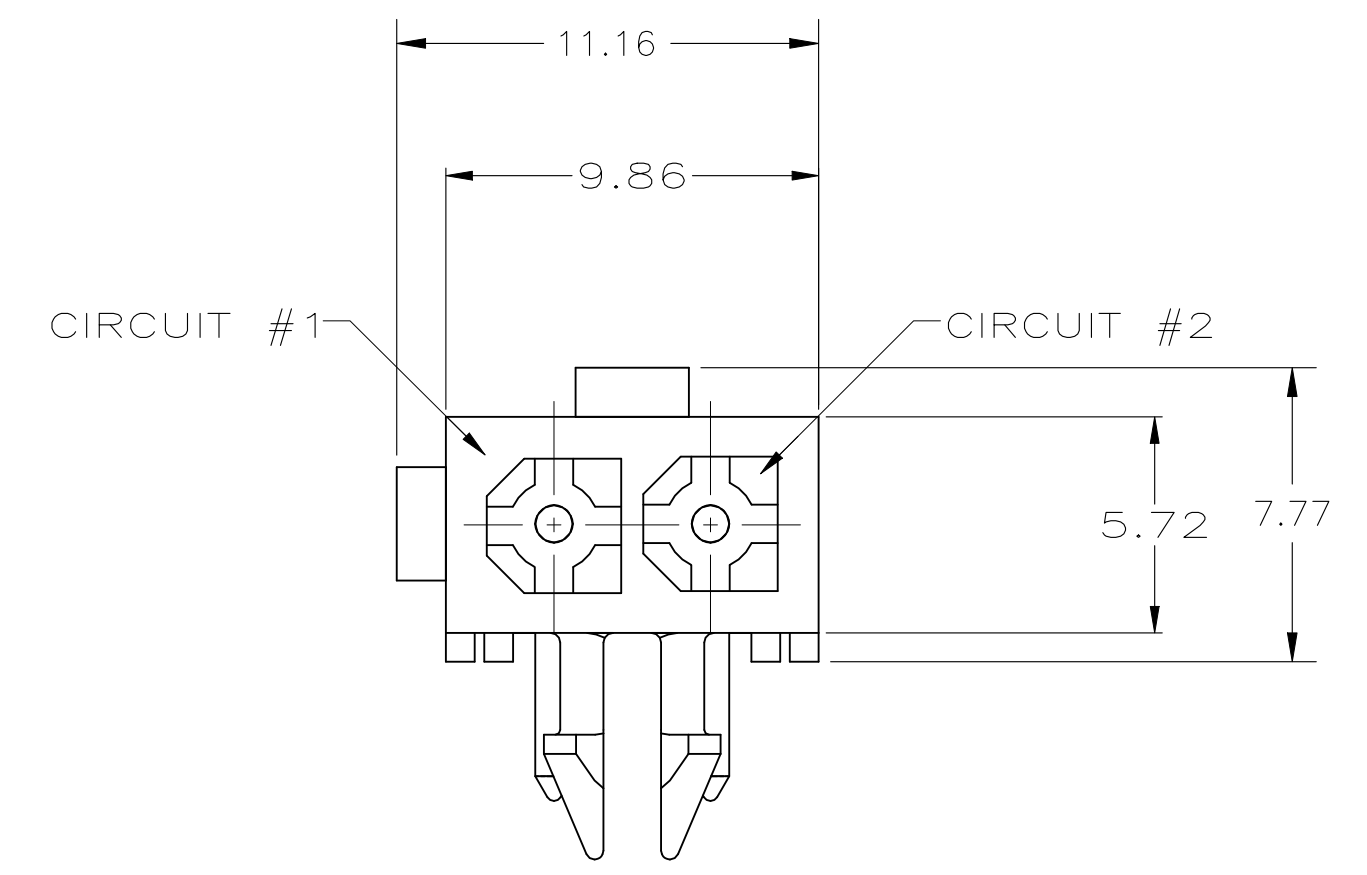
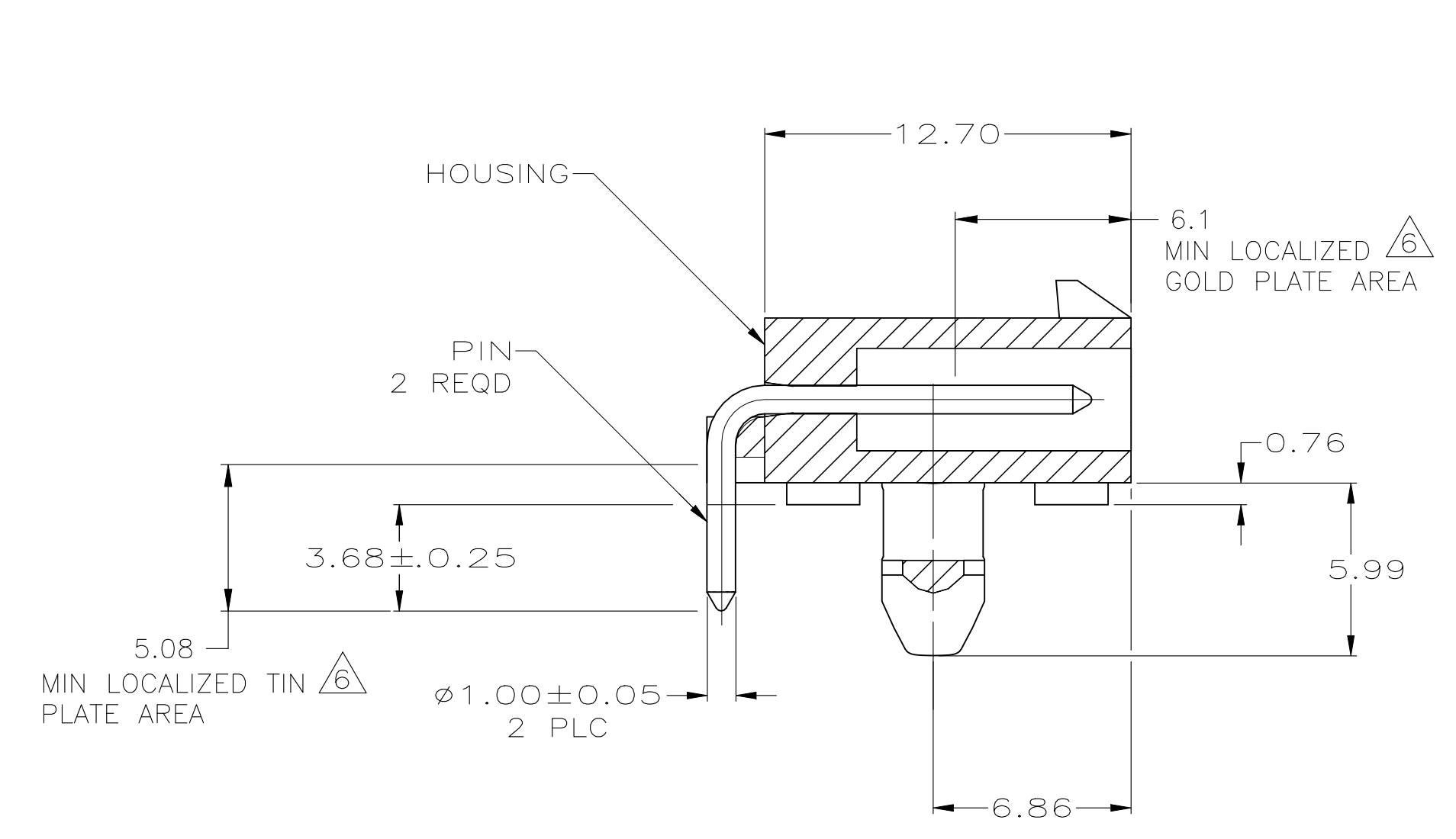


REVISIONS					
REV	DESCRIPTION	DATE	BY	CHK	APP'D
C2	REVISED PER ECR-23-177423	07JUN2023	JP	VS	



MM	IN	MM	IN
2.070	.0815	-	-
1.57	.062	12.70	.500
1.40	.055	9.86	.388
1.00	.039	7.34	.289
0.76	.030	6.86	.270
0.25	.010	6.10	.240
0.13	.005	5.99	.236
0.08	.003	5.72	.225
0.05	.002	5.33	.210
0.0038	0.000150	5.08	.200
0.00127	0.000050	3.86	.152
0.00076	0.000030	3.68	.145
MM	IN	MM	IN

RECOMMENDED MOUNTING HOLE PATTERN FOR 1.57 THICK P.C. BOARD

- PINS TO COMPLY WITH AMP SOLDERABILITY SPEC 109-11-3.
- MATES WITH PLUG P/N 1586615-1.
- COORDINATE DIMENSION APPLIES FROM CENTER OF ACTUAL FEATURE.
- RECOMMENDED FOR EDGE MOUNTING.
- 0.00381 MIN MATTE TIN OVER 0.00127 MIN NICKEL ENTIRE LENGTH OF PIN.
- 0.00076 MIN GOLD PLATE IN THE LOCALIZED GOLD PLATE AREA 0.00381 MIN MATTE TIN IN THE LOCALIZED TIN PLATE AREA, BOTH OVER 0.00127 MIN NICKEL.

OBsolete	BRASS	6	NYLON, UL94V-0	WHITE	1586608-2
	BRASS	5	NYLON, UL94V-0	WHITE	1586608-1
	MATERIAL	FINISH	MATERIAL	COLOR	PART NO.
	PIN		HOUSING		

THIS DRAWING IS A CONTROLLED DOCUMENT.

DIMENSIONS: mm	TOLERANCES UNLESS OTHERWISE SPECIFIED:	DIN K. WHITAKER 08APR2005	TE Connectivity
0 PLC ±	1 PLC ±	CHK C. JONES 08APR2005	NAME
2 PLC ±	3 PLC ± 0.13	APPRO C. JONES 08APR2005	PRODUCT SPEC
4 PLC ±	ANGLES ±	APPLICATION SPEC	SIZE
SEE TABLE	FINISH	WEIGHT	CAGE CODE
			DRAWING NO
			RESTRICTED TO
			A1 00779 C=1586608
			CUSTOMER DRAWING
			SCALE 5:1 SHEET 1 of 1 REV C2