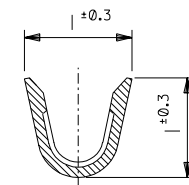
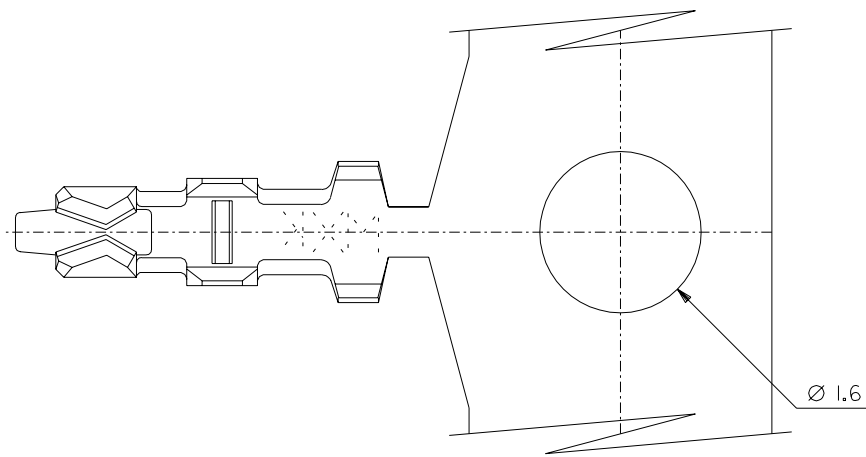
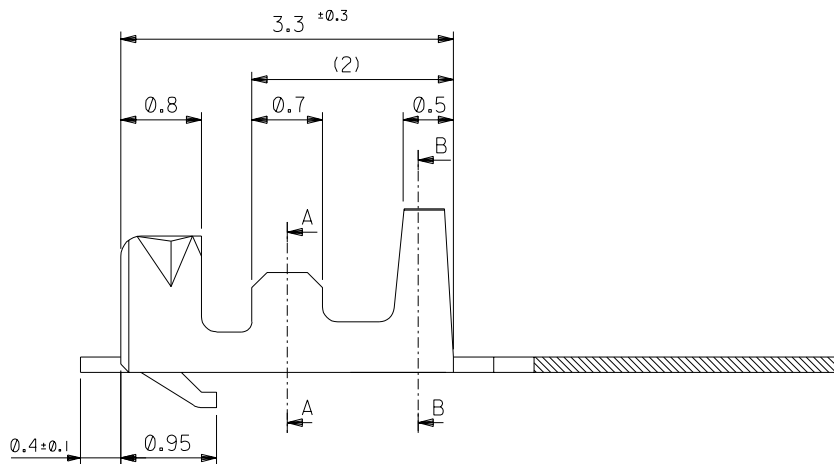
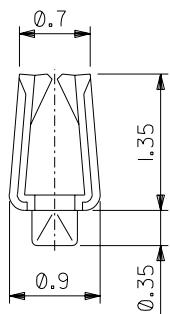
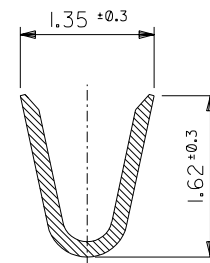


DO NOT SCALE DRAWING
DIMENSION IN METRIC

ANGLE	±3°
3Ø OVER	±0.3
1Ø OVER 3Ø UNDER	±0.25
1Ø UNDER	±0.2
GENERAL TOLERANCES	



SECT. A-A



SECT. B-B

NOTES

1. MATERIAL : PHOSPHOR BRONZE
2. PLATING : TIN(Sn) 0.9µm MINIMUM.(PRE-PLATED)
3. APPLICABLE HOUSING : 51021-**30
4. APPLICABLE WIRE RANGE : AWG #26-#30
5. APPLICABLE INSULATION RANGE : Ø 1.0mm MAX.

50058-8300	CHAIN
ENG. NO.	FORM

DIMENSIONS:	SHT	REV
<input type="checkbox"/> mm <input type="checkbox"/> INCH	<input type="checkbox"/> mm ONLY	REVISE ON CAD ONLY

NEW RELEASED EC NO. KOR2005-0077 DRWN: KSKIM (041112) CHK: Y.SOO.KIM APPR: CWLEE	QUALITY SYMBOLS	GENERAL TOLERANCES: (UNLESS SPECIFIED)	SCALE 20 - 1	DESIGN UNITS <input checked="" type="checkbox"/> mm <input type="checkbox"/> INCH	THIRD ANGLE PROJECTION
	MAJOR ▲ =	mm	INCH	DRAWN BY & DATE KSKIM (030806)	TITLE:
	CRITICAL ▽ =	4 PLACES ±0.	±	CHECKED BY & DATE Y.SOO.KIM	1.25 WIRE TO BOARD CONN. CRIMP RECEPTACLE TERMINAL
	REV	3 PLACES ±0.	±	APPROVED BY & DATE CWLEE	
		2 PLACES ±0.	±	CAD FILENAME	MATERIAL NO.
		1 PLACE ±0.	±		DRAWING NO.
		ANGULAR: ±	°		SD-50058-001
		DRAFT WHERE APPLICABLE MUST REMAIN WITHIN DIMENSIONS		THIS DRAWING CONTAINS INFORMATION THAT IS PROPRIETARY TO MOLEX INCORPORATED AND SHOULD NOT BE USED WITHOUT WRITTEN PERMISSION.	
					SHEET NO. 1 OF 1
					SIZE B

MOLEX INCORPORATED

50058-501