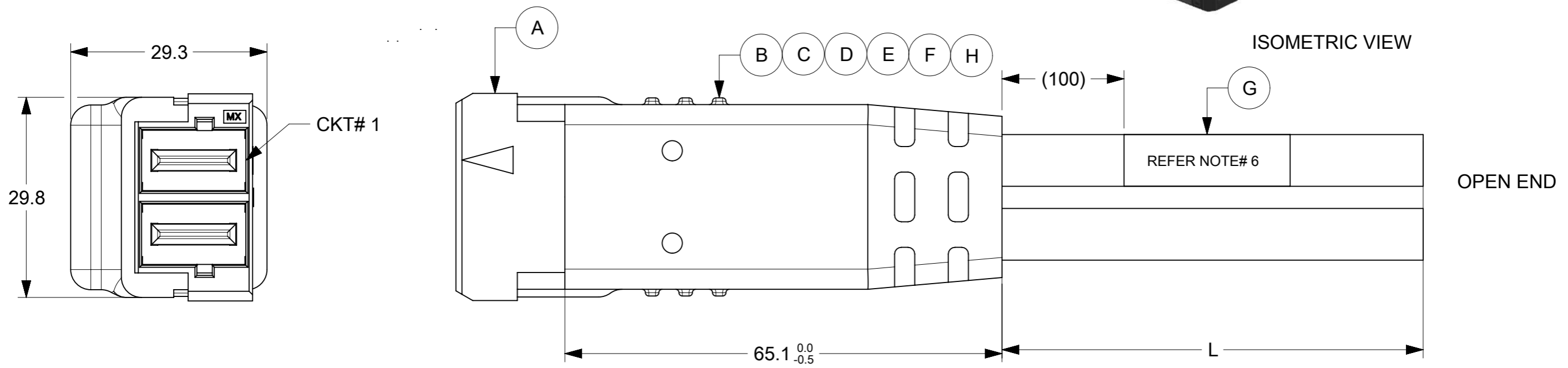
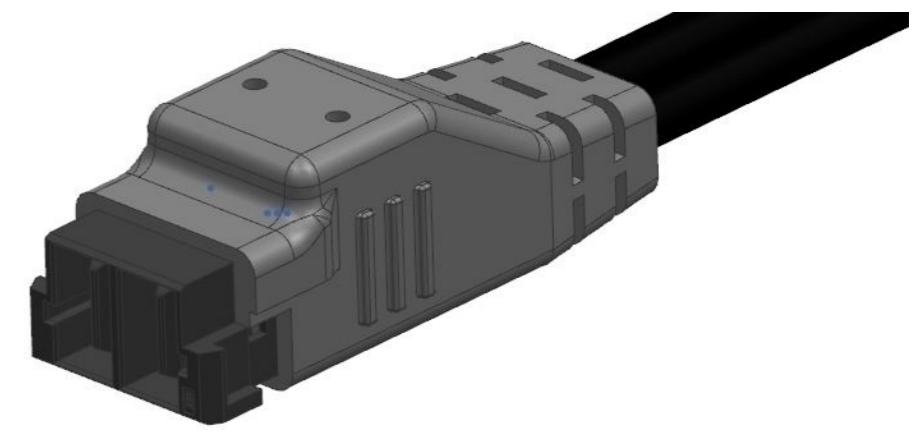


ITEM	MOLEX PART#	DESCRIPTION	QTY	UOM
A	1510351012	GuardianII RA Plug w/screw mt .76Au 2ckt	1	PC
B	--	INNER CAP 2 CKT	1	PC
C	--	RESIN TPE BLACK (INNER+OUTER MOLD)	A/R	KG
D	--	CABLE TIE	2	PC
E	--	ADHESIVE GLUE	A/R	KG
F	--	SPACER	2	PC
G	--	PART IDENTIFICATION LABEL	1	PC
H	--	SOLDERING MATERIAL	A/R	KG

FROM	TO	CABLE PART#	DESCRIPTION	COLOR
A1	OPEN END	--	6AWG,UL10669,PVC BLACK,105C,600V,VW-1	BLACK
A2				



REFER NOTE# 6

TABLE A

PART#	DESCRIPTION	LENGTH (L)
218055-0205	2 CKT OVERMOLD GRDN P W/ BLUNTCUT 500MM	500±10
218055-0210	2 CKT OVERMOLD GRDN P W/ BLUNTCUT 1M	1000±20
218055-0220	2 CKT OVERMOLD GRDN P W/ BLUNTCUT 2M	2000±20

- NOTES:
1. THIS CABLE ASSEMBLY MUST PASS 100% CONTINUITY TEST.
 2. UL10669 CABLE MEETS OPERATING TEMP. OF 105°C & FLAMMABILITY CLASS OF VW-1.
 3. CABLE ASSEMBLY CAN WITHSTAND 10KGF (MINIMUM) OF AXIAL PULL FORCE AT 25MM/MINUTE WHILE CLAMPING ITEM "A".
 4. CABLE ASSEMBLY CAN WITHSTAND DIELECTRIC VOLTAGE OF 2200 VAC FOR 1 MINUTE BETWEEN ADJACENT TERMINALS.
 5. CABLE ASSEMBLY HAS CURRENT RATING OF 60 AMPERES.
 6. PART IDENTIFICATION LABEL SHOULD BE PRINTED AS BELOW:

P/N : (REFER TABLE A)
MOLEX
BATCH : WK/YR

FUNCTIONAL SYMBOLS	THIS DRAWING CONTAINS INFORMATION THAT IS PROPRIETARY TO MOLEX ELECTRONIC TECHNOLOGIES, LLC AND SHOULD NOT BE USED WITHOUT WRITTEN PERMISSION	CURRENT REV DESC:		molex																																													
	<table border="1"> <tr> <th>FUNCTIONAL SYMBOLS</th> <th>DIMENSION UNITS</th> <th>SCALE</th> </tr> <tr> <td>$\nabla_A = 0$</td> <td>mm</td> <td>NTS</td> </tr> <tr> <td colspan="3">GENERAL TOLERANCES (UNLESS SPECIFIED)</td> </tr> <tr> <td>$\nabla_E = 0$</td> <td colspan="2">ANGULAR TOL ± 1.0°</td> </tr> <tr> <td>$\nabla_F = 0$</td> <td>4 PLACES</td> <td>±</td> </tr> <tr> <td></td> <td>3 PLACES</td> <td>±</td> </tr> <tr> <td></td> <td>2 PLACES</td> <td>± 0.25</td> </tr> <tr> <td></td> <td>1 PLACE</td> <td>± 0.5</td> </tr> <tr> <td></td> <td>0 PLACES</td> <td>±</td> </tr> </table>	FUNCTIONAL SYMBOLS	DIMENSION UNITS		SCALE	$\nabla_A = 0$	mm	NTS	GENERAL TOLERANCES (UNLESS SPECIFIED)			$\nabla_E = 0$	ANGULAR TOL ± 1.0°		$\nabla_F = 0$	4 PLACES	±		3 PLACES	±		2 PLACES	± 0.25		1 PLACE	± 0.5		0 PLACES	±	<table border="1"> <tr> <td>EC NO: 725460</td> <td>2022/06/15</td> </tr> <tr> <td>DRWN: BKHANDLWAL</td> <td>2022/10/20</td> </tr> <tr> <td>CHK'D: RAMACP1</td> <td>2022/10/20</td> </tr> <tr> <td>APPR: RAMACP1</td> <td>2022/10/20</td> </tr> </table>	EC NO: 725460	2022/06/15	DRWN: BKHANDLWAL	2022/10/20	CHK'D: RAMACP1	2022/10/20	APPR: RAMACP1	2022/10/20	<table border="1"> <tr> <td colspan="3">PRODUCT CUSTOMER DRAWING</td> </tr> <tr> <td>DOCUMENT NUMBER</td> <td>DOC TYPE</td> <td>DOC PART</td> <td>REVISION</td> </tr> <tr> <td>2180550205</td> <td>PSD</td> <td>000</td> <td>D</td> </tr> </table>		PRODUCT CUSTOMER DRAWING			DOCUMENT NUMBER	DOC TYPE	DOC PART	REVISION	2180550205	PSD
FUNCTIONAL SYMBOLS	DIMENSION UNITS	SCALE																																															
$\nabla_A = 0$	mm	NTS																																															
GENERAL TOLERANCES (UNLESS SPECIFIED)																																																	
$\nabla_E = 0$	ANGULAR TOL ± 1.0°																																																
$\nabla_F = 0$	4 PLACES	±																																															
	3 PLACES	±																																															
	2 PLACES	± 0.25																																															
	1 PLACE	± 0.5																																															
	0 PLACES	±																																															
EC NO: 725460	2022/06/15																																																
DRWN: BKHANDLWAL	2022/10/20																																																
CHK'D: RAMACP1	2022/10/20																																																
APPR: RAMACP1	2022/10/20																																																
PRODUCT CUSTOMER DRAWING																																																	
DOCUMENT NUMBER	DOC TYPE	DOC PART	REVISION																																														
2180550205	PSD	000	D																																														
DIVISIONAL SYMBOLS	<table border="1"> <tr> <td>DRAFT WHERE APPLICABLE MUST REMAIN WITHIN DIMENSIONS</td> <td>THIRD ANGLE PROJECTION</td> <td>DRAWING</td> <td>SERIES</td> <td>MATERIAL NUMBER</td> <td>CUSTOMER</td> <td>SHEET NUMBER</td> </tr> <tr> <td></td> <td></td> <td>A3-SIZE</td> <td>218055</td> <td>SEE TABLE A</td> <td>GENERAL MARKET</td> <td>1 OF 1</td> </tr> </table>	DRAFT WHERE APPLICABLE MUST REMAIN WITHIN DIMENSIONS	THIRD ANGLE PROJECTION	DRAWING	SERIES	MATERIAL NUMBER	CUSTOMER	SHEET NUMBER			A3-SIZE	218055	SEE TABLE A	GENERAL MARKET	1 OF 1																																		
DRAFT WHERE APPLICABLE MUST REMAIN WITHIN DIMENSIONS	THIRD ANGLE PROJECTION	DRAWING	SERIES	MATERIAL NUMBER	CUSTOMER	SHEET NUMBER																																											
		A3-SIZE	218055	SEE TABLE A	GENERAL MARKET	1 OF 1																																											