

Quality Control Standard

出货品质标准

Valued customer 客户名称	Sourceengine	Customer Product Name/No. (客户产品名称/编号):	吸尘器	
Model No 机种编号	RV476-SD-2675	Swatch No.: 样品编号	EHA231-0016	Date作成日: 2023/1/12 Rev.
Our Code No. 仕样编号	RV476-SD-00004A 陈礼云2023.02.01	(Please Use Our Code No. To Order) (订货时请用此仕样编号)		Rev. Date修订日:
			备注	ROHS

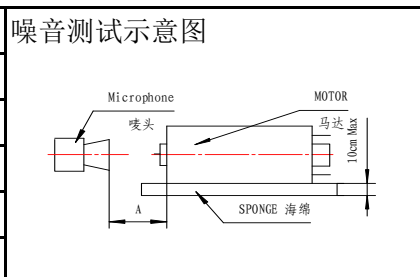
1. Conditions of Standard Operation / 工作条件

1- 1)Driving Voltage 驱动电压	:	24	V	DC Constant between motor terminals. 马达端子电压	24	V	直流恒压。
1- 2)Direction of Rotation 回转方向	:	CCW viewing from metal housing. CCW 面对马达金属外壳时。					
1- 3)Position of Motor 马达放置状态	:	To be placed horizontally when measuring. 测试时水平放置。					

1- 4)Operating Temperature工作温度	:	-10	°C	to	60	°C	
1- 5)Operating Humidity工作湿度	:	30%RH to 95%RH					

2. Conditions of Standard Test / 测试条件

2- 1)Testing Temperature测试温度	:		10°C	to		30°C	
2- 2)Testing Humidity测试湿度	:	30%RH to 95%RH					



3. Initial Electrical Characteristics / 初期特性

3- 1) No Load Speed 无负荷转速	:	6000	±	900	rpm			
	:	6000	±	900	转/分			
3- 2) No Load Current 无负荷电流	:	300		mA max.				
	:	最大		300	毫安培			
3- 3) Load Speed 负荷转速	At Load	68.6	mNm	:	4600	±	700	rpm
				:	4600	±	700	转/分
3- 4) Load Current 负荷电流	负载	68.6	mNm	:	3000		mA max.	
				:	最大		3000	毫安培
3- 3) Stall Torque 堵转扭力	At Load	24.0 & 110.0	mNm	:	217		mNm min.	
				:	最小		217	mNm
3- 4) Stall Current 堵转电流	在负载点	24.0 & 110.0	mNm	:	10.9		A max.	
				:	最大		10.9	安培
3- 5) Mechanical Noise(vertical from housing side 30 cm Background noise 30dB Max) 机械噪音(距离铁壳侧 30 cm, 环境噪音30dB Max)	:	60		dB Or below(RMS)JIS-A Characteristics dB 以下(RMS) JIS-A特性				
3- 6) Reference Performance Curve 参考性能曲线	:	As per attached Sheet		RV476-SD-2675				
	:	所附图表为		RV476-SD-2675				
3- 7) Dimensions 外形尺寸	:	As per Drawing attached		WG- R476D-T04				
	:	所附图面为		WG- R476D-T04				
3- 8) End play of Shaft 虚位	:	0.05	~	0.50	mm			
	:	0.05	~	0.50	毫米			

For & on behalf of Customer

For & on behalf of Standard Motor Co., Ltd.

Jack Lee 2023/01/13



As a reminder, the specification should be signed and returned within two weeks, or it will be considered as acceptable by the customer. 如果客户两周内不签字确认并返回, 将被视为已认可此规格。

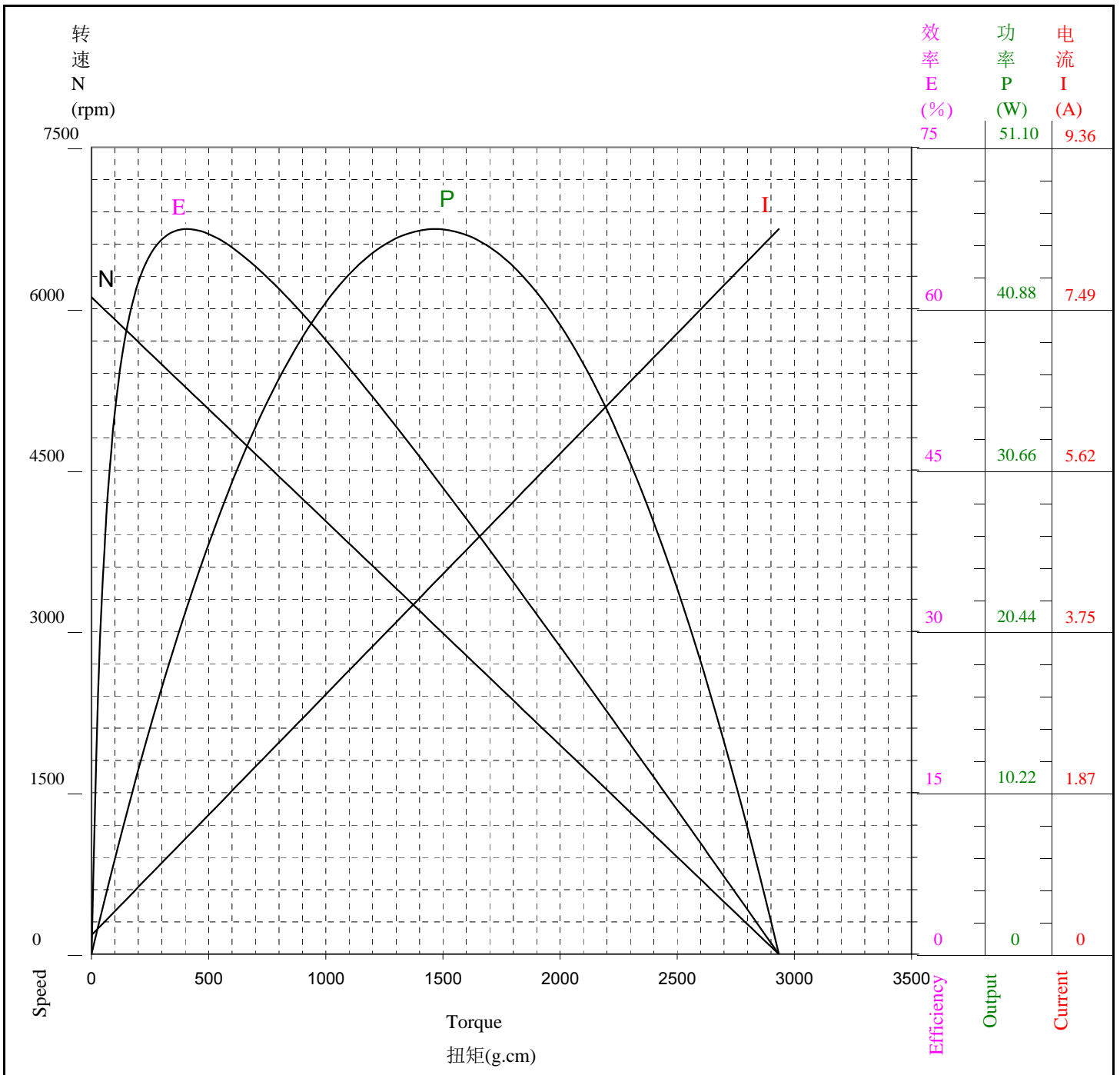
性能表只供参考
马达实际参数请以马达出货标准为主



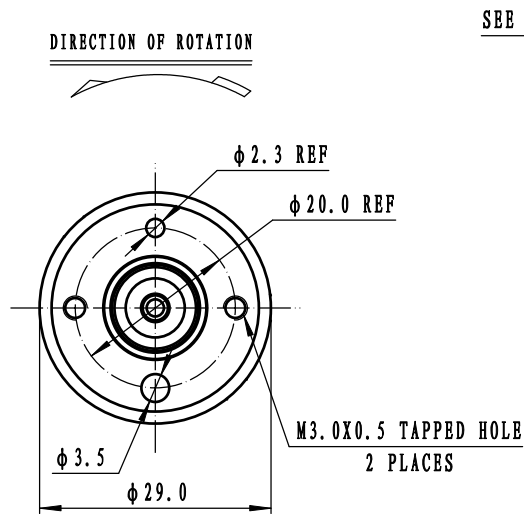
STANDARD MOTOR 標準微型摩打有限公司

两点法: 244.7 g.cm & 1121.7 g.cm

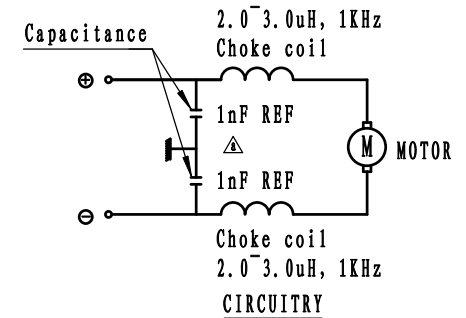
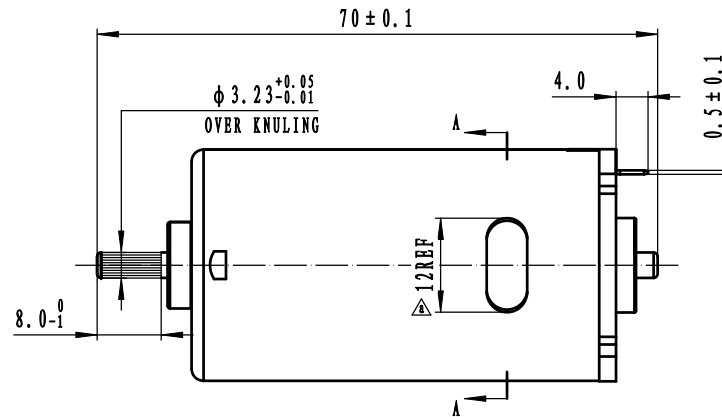
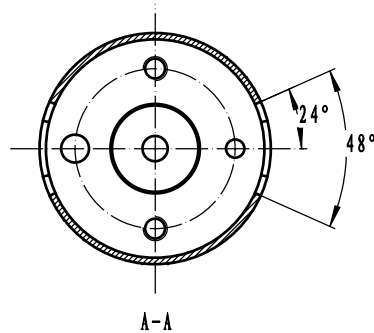
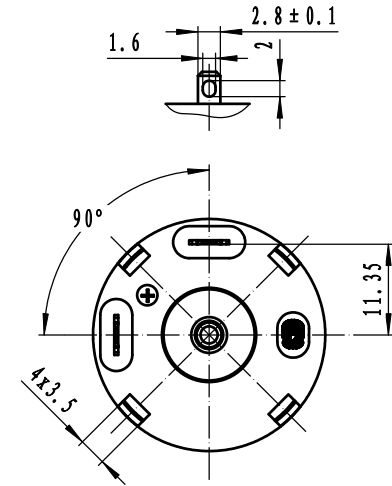
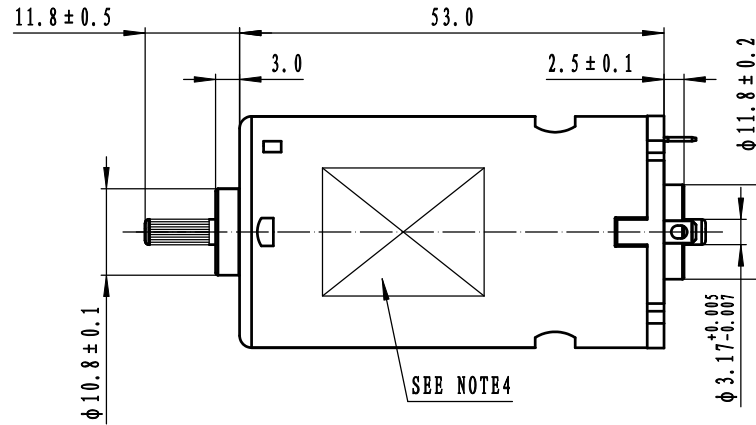
Model/Winding 型号/卷线	Voltage 电压 V	No Load 无负荷		At Maximum Efficiency 最大效率点				At Maximum Output 最大功率点				Stall 停止	
		Current 电流 A	Speed 转速 rpm	Current 电流 A	Speed 转速 rpm	Torque 扭矩 g.cm	Efficiency 效率 %	Current 电流 A	Speed 转速 rpm	Torque 扭矩 g.cm	Output 功率 W	Current 电流 A	Torque 扭矩 g.cm
RV476-SD-2675	24.0	0.220	6106	1.361	5256	408.3	67.4	4.318	3053	1466.8	45.93	8.415	2933.6



MARK	POSITION	DESCRIPTION	DATE	BY
△x2	D5 B7	根据变更通知书SMJ-AP22-056大壳加腰孔, 改电容容量	22.07.06	李江



SEE NOTE1



NOTES (备注):

- THIS DIM APPLIES ONLY WHEN MOTOR SHAFT IS IN EXTREME LEFT POSITION
该尺寸适用于将轴压于左侧时
- SHAFT END PLAY 0.05 ~ 0.5
马达虚位(轴向串动) 0.05 ~ 0.5
- USABLE MACHINE SCREW LENGTH 4.0 MAX. FROM MOTOR MOUNTING SURFACE
从大壳外端面开始, 可用机器螺钉长度 4.0 MAX
- SPECIFIED CONTENT WILL BE TYPEGRAPHICALED IN CONFORMITY TO GETUP BOOK OF MOTOR
按马达仕样书印刷指定内容

Characteristic	DWN. BY	Li Jiang	DWN. DATE	21.11.15	TITLE	Motor Outline Drawing
⚙	Cpk > 1.33	CHK. BY	CHK. DATE		DWG. No.	WG-R476D-T04
▲	Quality control	APP. BY	APP. DATE		Undeclared tolerance	± 0.3
					Angle tolerance	± 3°
Not mark	Not required	SMV STANDARD MOTOR 标准微型马达有限公司	SCALE	1.5:1	Rev.	a A3