

PLEASE CHECK WWW.MOLEX.COM FOR LATEST PART INFORMATION

Part Number: [0730993006](#)
Status: **Active**
Overview: CyClone Panel-to-Panel Connector System
Description: 2.54mm CyClone Drawer Connector, Blind Mating, Hermaphroditic, 6 Circuits

Documents:

3D Model	Packaging Specification PK-70873-1000 (PDF)
Drawing (PDF)	Test Summary TS-73099-0001-001 (PDF)
Product Specification PS-73099-9999-001 (PDF)	RoHS Certificate of Compliance (PDF)

Agency Certification

CSA	LR19980
UL	E29179

General

Product Family	Accessories
Series	73099
Comments	10,000 mating cycles max., 10,000 mating cycles max.
Component Type	Adapter, Drawer Connector
Overview	CyClone Panel-to-Panel Connector System
Product Name	CyClone, SL
UPC	889056293877

Physical

Circuits (Loaded)	6
Circuits (maximum)	6
Color - Resin	Black
Flammability	94V-0
Gender	Hermaphroditic
Lock to Mating Part	Yes
Material - Metal	Beryllium Copper
Material - Plating Mating	Gold
Material - Plating Termination	Gold
Material - Resin	Polyester
Net Weight	6.315/g
Number of Rows	1
Packaging Type	Tray
Plating min - Mating	1.270µm
Plating min - Termination	0.381µm
Polarized to Mating Part	Yes
Temperature Range - Operating	-40° to +105°C

Electrical

Current - Maximum per Contact	2.0A
-------------------------------	------

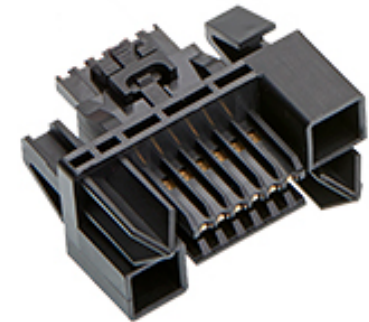
Solder Process Data

Lead-freeProcess Capability	N/A
-----------------------------	-----

Material Info

Reference - Drawing Numbers

Packaging Specification	PK-70873-1000
Product Specification	PS-73099-9999-001
Sales Drawing	SD-73099-3000-000
Test Summary	TS-73099-0001-001



Series image - Reference only

EU ELV

Not Relevant

EU RoHS

Compliant

REACH SVHC

Not Contained Per -
ED/71/2019 (16 July
2019)

Halogen-Free

Status

Not Low-Halogen

For more information, please visit [Contact US](#)

China ROHS

ELV

RoHS Phthalates

China RoHS

Green Image

Not Relevant

Not Contained

Search Parts in this Series

[73099 Series](#)

Use With

[70400](#) Version G Connector, [70066](#) Version G Housing, [70430](#) Version G Receptacle

PLEASE CHECK WWW.MOLEX.COM FOR LATEST PART INFORMATION