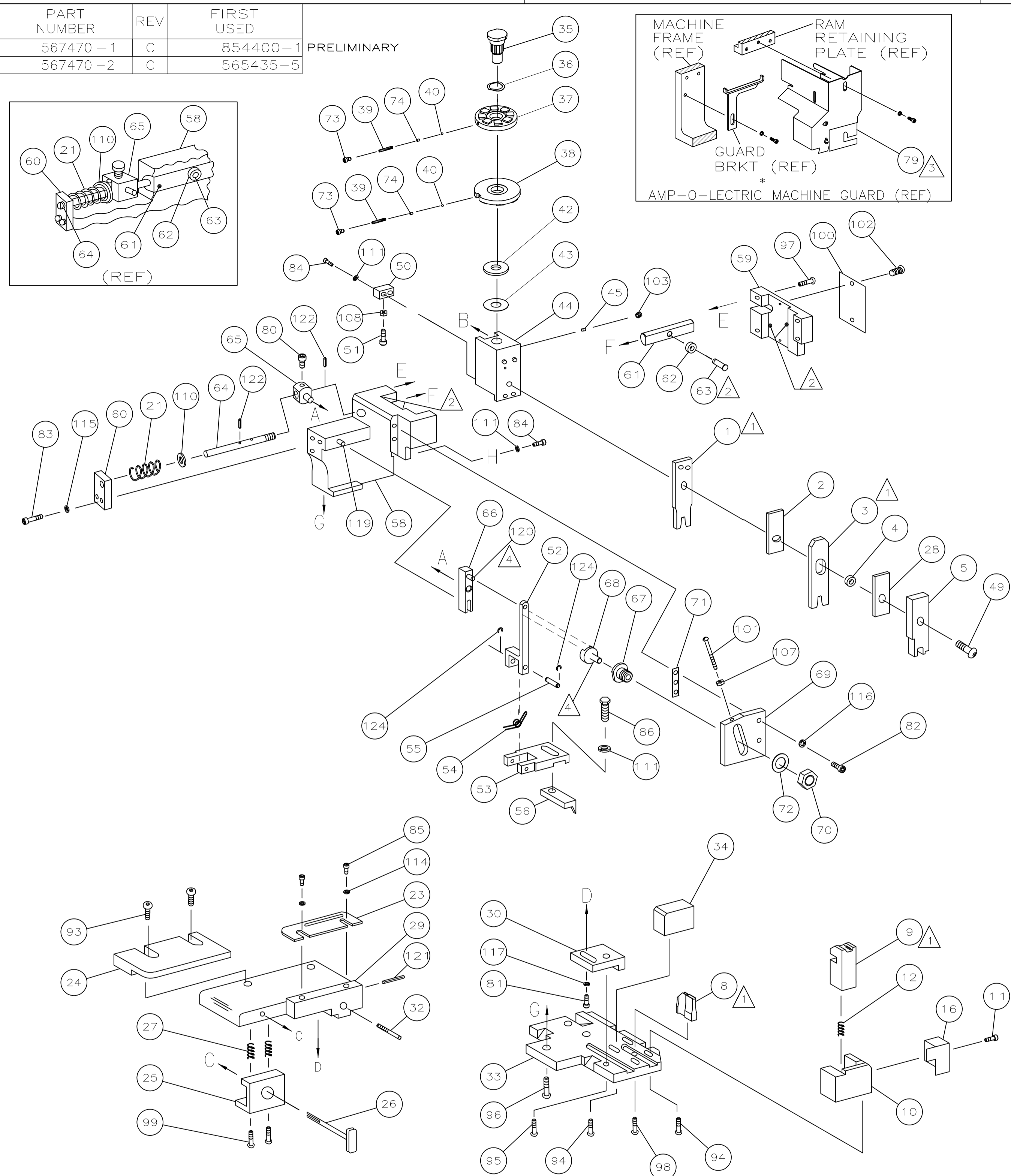
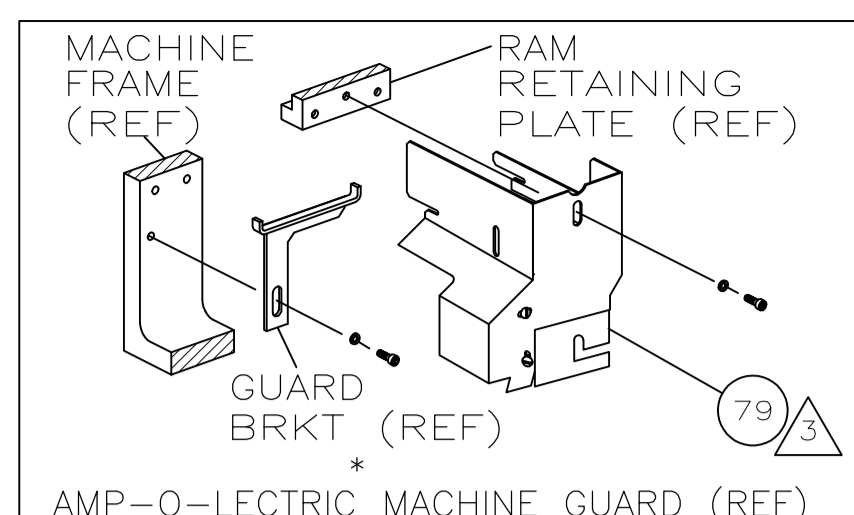
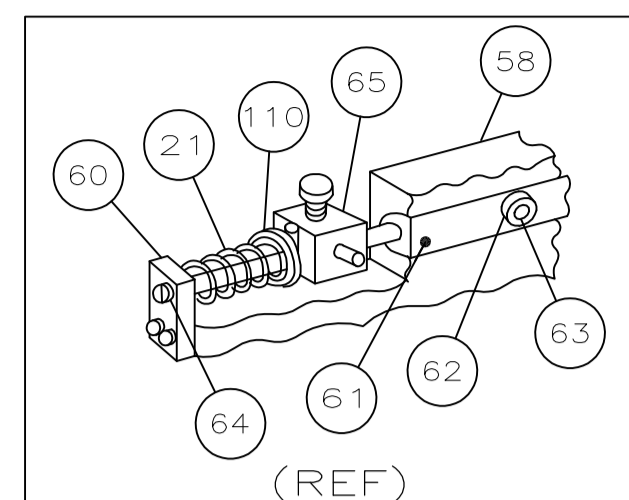
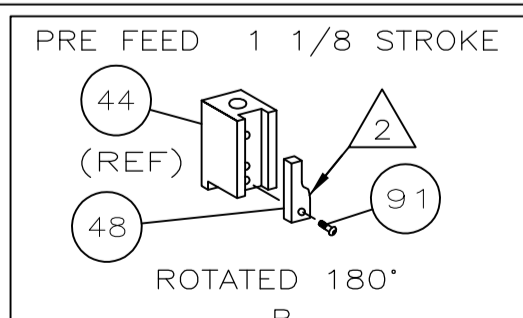
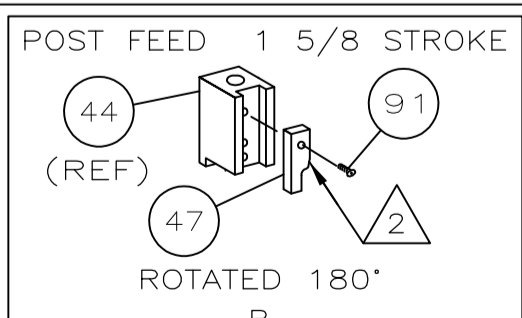


PART NUMBER	REV	FIRST USED
567470-1	C	854400-1
567470-2	C	565435-5

PRELIMINARY

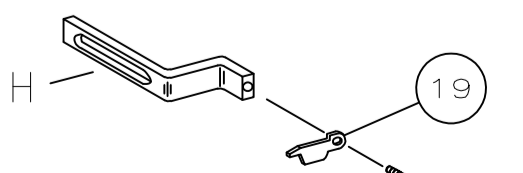
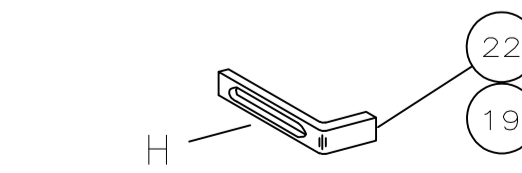


\* Trademark of AMP Incorporated



- 1 RECOMMENDED SPARE PARTS.
- 2 GREASE LIGHTLY.
- 3 GUARD MUST BE IN PLACE WHEN OPERATING APPLICATOR IN AMP-O-LECTRIC MACHINE.
- 4 LUBRICATE DAILY USING NO. 20 MACHINE OIL.

5. ITEMS WITH QTY OF REF SPECIFIED (EXCEPT ITEM 79) ARE USED ON ITEM 46.



TERMINAL NAME:  
MAG-MATE POKE-IN TAB

63397-1
---------

TERM APPL SPEC 114-2050

CRIMPING DATA

PAD LTR	CRIMP HEIGHT	WIRE SIZE
A	.083 ±.002	14 OR (16+18)
B	.078 ±.002	2(18)
C	.074 ±.002	16
D	.068 ±.002	18

CRIMP	SIZE	TYPE	RANGE
WIRE	.110	F	18-14

INSUL	APPL INST	SET UP GAGE	LAYOUT
.360	A18040	458637-1	L1103B

WIRE STRIP LENGTH .156 - .187

	LEADMAKER	MECH-POST FEED
-1		
	AMP-O-LECTRIC	MECH-PRE FEED
-2		

REF	REF		A	21045-3	RING,RET "C"(Ø.187)FD FING PIN	124
REF	REF	-	A	5-21028-1	PIN,SLT SPR(Ø.125x.50)ADJ ROD	123
REF	REF	-	A	4-21028-0	PIN,SLT SPR(Ø.093x.75)ST GDE PL	121
REF	REF	-	A	1-21030-1	PIN,DOWEL(Ø.187x.50)LEVER	120
REF	REF	-	A	1-21030-6	PIN,DOWEL(Ø.187x1.25)HOUSING	119
1	1	-	A	21024-5	WASHER, LOCK(#10)ADJ BLOCK	118
REF	REF	-	A	21024-5	WASHER,LOCK(#10)ADJ PLATE	117
REF	REF	-	A	21024-5	WASHER,LOCK(#10)FEED GDE ROD	116
2	2	-	A	21024-2	WASHER,LOCK(#4)FRONT STP GUIDE	115
						114
						113
						112
4	4	-	A	21024-4	WASHER,LOCK(#8)STRIPPER	111
REF	REF	-	A	21899-4	WASHER,FLAT(Ø5/16)SCREW ADJ	110
						109
1	1	-	A	21018-5	NUT,HEX(NO.6)HOLDDOWN	108
REF	REF	-	A	21018-5	NUT,HEX(6-32)FEED ADJ	107
						106
						105
						104
1	1	-	A	21009-2	SCR,SKT SET(1/4-20x.25 LW)RAM	103
2	2	-	A	21017-2	SCR,DRIVE(#2x.19)ID PLATE	102
REF	REF	-	A	6-23715-5	SCR,PAN HD(6-32x1.50)FEED ADJ	101
1	1	-	B	461264-1	PLATE, IDENTIFICATION	100
2	2	-	A	2-21002-9	SCR,BHC(10-32x.75)DRAG	99
1	1	-	A	22733-8	SCR,BHC(8-32x.38 LW)ANVIL	98
REF	REF	-	A	2-21002-9	SCR,BHC(10-32x.75)CAP	97
REF	REF	-	A	2-22733-8	SCR,BHC(1/4-20x.62)HOUSING	96
REF	REF	-	A	2-21002-7	SCR,BHC(10-32x.50)SG ADJ BLOCK	95
4	4	-	A	2-21002-2	SCR,BHC(8-32x.50)SHEAR	94
2	2	-	A	2-21002-1	SCR,BHC(8-32x.38)R STRIP GUIDE	93
						92
1	1	-	A	1-21002-7	SCR,BHC(6-32x.38)CAM	91
						90
						89
						88
						87
1	1	-	A	2-22603-0	SCR,HEX HD(8-32x.31)FEED FINGER	86
2	2	-	A	1-21000-3	SCR,SHC(4-40x.25)F ST GUIDE	85
3	3	-	A	2-21000-7	SCR,SHC(8-32x.50)STRIPPER	84
REF	REF	-	A	3-21000-7	SCR,SHC(10-32x.75)FEED ROD GD	83
REF	REF	-	A	3-21000-6	SCR,SHC(10-32x.62)FD ADJ BLK	82
1	1	-	A	3-21000-4	SCR,SHC(10-32x.38)SG ADJ BL	81
REF	REF	-	A	3-21000-4	SCR,SHC(10-32x.38)PIVOT BLK	80
REF	-	-	B	455749-1	GUARD, WINDOW	79
						78
						77
						76
						75
2	2	-	A	690603-1	SPRING, ASSIST	74
2	2	-	A	23030-1	SCR,SHC(6-32x.25)CP DISC	73
REF	REF	-	A	458109-1	WASHER, SPECIAL	72
REF	REF	-	A	690517-1	SPACER	71

QTY REQD PER ASSY	U/M	DWG SIZE	PART NO	DESCRIPTION	ITEM NO
				REVISION OF EACH ASSY NO (WHEN BLANK, USE DWG REVISION)	
				PARTS LIST	

REF	REF		B	22594-8	NUT,HEX(1/2-20)	70
REF	REF	-	B	240628-1	PLATE, ADJUSTMENT	69
REF	REF	-	B	240626-1	SHAFT, PIVOT	68
REF	REF	-	B	240633-1	BUSHING	67
REF	REF	-	A	455680-1	LEVER, INTERMEDIATE	66
REF	REF	-	B	240629-1	BLOCK, PIVOT	65
REF	REF	-	A	240632-2	SCREW, ADJ FEED ROD	64
REF	REF	-	B	240659-3	PIN, CAM ROLLER	63
REF	REF	-	B	240658-1	ROLLER, CAM	62
REF	REF	-	B	454398-2	ROD, FEED	61
REF	REF	-	A	454178-1	GUIDE, FEED ROD	60
REF	REF	-	C	454220-1	CAP, RAM	59
REF	REF	-	D	454485-1	HOUSING	58
						57
1	1	-	B	458537-2	PAWL, FEED	56
REF	REF	-	B	240624-1	PIN, FEED FINGER	55
REF	REF	-	B	691499-1	SPRING, FEED FINGER	54
REF	REF	-	B	690541-1	HOLDER, FEED FINGER	53
REF	REF	-	A	455679-1	LEVER, TERMINAL FEED ARM	52
1	1	-	A	811242-2	BUMPER, HOLDDOWN	51
1	1	-	A	690753-1	SPACER, TONKER	50
1	1	-	A	7-21002-9	BOLT, CRIMPER(5/16x1.00)	49
1	-	-	B	690602-5	CAM, PRE-FEED 1 1/8 ST	48
-	1	-	B	690501-4	CAM, POST-FEED 1 5/8 ST	47
1	1	-	B	459456-1	APPLICATOR, BASIC (SUBASSY)	46
1	1	-	A	690191-1	PLUG, NYLON	45
1	1	-	C	455673-1	RAM	44
1	1	-	A	690125-1	WASHER, LAMINATED	43
1	1	-	A	690124-1	WASHER, RAM	42
						41
2	2	-	A	23241-6	BALL, STEEL	40
2	2	-	A	690170-1	SPRING, COMPRESSION	39
1	1	-	C	690142-1	DISC, INSULATION	38
1	1	-	B	4-692155-1	DISC, WIRE	37
1	1	-	A	22480-5	WASHER, SPRING	36
1	1	-	B	690212-1	POST, RAM	35
1	1	-	B	690786-1	SUPPORT, TERMINAL	34
REF	REF	-	D	455675-1	PLATE, BASE	33
1	1	-	A	690432-3	SCREW, ADJUSTMENT	32
						31
REF	REF	-	B	455689-1	BLOCK, STRIP GUIDE ADJ	30
1	1	-	C	455671-1	PLATE, STRIP GUIDE	29
1	1	-	C	1-455888-0	SPACER, FRONT SHEAR DEP	28
2	2	-	A	1-22284-0	SPRING, DRAG	27
1	1	-	B	690546-1	LEVER, DRAG RELEASE	26
1	1	-	B	240792-1	DRAG, TERMINAL	25
1	1	-	D	7-690504-6	GUIDE, STRIP (REAR)	24
1	1	-	A	690438-1	GUIDE, STRIP (FRONT)	23
-	1	-	B	690472-2	STRIPPER	22
REF	REF	-	A	4-22284-9	SPRING, FEED RETURN	21
						20
1	-	-	B	458949-1	STRIPPER	19
						18
						17
1	1	-	B	691667-1	GUARD, CHIP (FRONT)	16
						15
						14
						13
1	1	-	A	3-22280-3	SPRING, SHEAR	12
1	1	-	B	690461-1	STOP, SHEAR	11
1	1	-	C	90692-1	HOLDER, SHEAR (FRONT)	10
1	1	-	C	454276-1	SHEAR, FLOAT (FRONT)	9
1	1	-	C	2-803653-2	ANVIL	8
						7
						6
1	1	-	C	1-455889-8	DEPRESSOR, SHEAR (FRONT)	5
1	1	-	B	1-238011-0	SPACER, BLOCK CRIMPER	4
1	1	-	C	683453-5	CRIMPER, INSULATION	3
1	1	-	C	455888-4	SPACER, CRIMPER	2
1	1	-	C	2-456408-0	CRIMPER, WIRE	1

QTY REQD PER ASSY	U/M	DWG SIZE	PART NO	DESCRIPTION	ITEM NO
				REVISION OF EACH ASSY NO (WHEN BLANK, USE DWG REVISION)	
				PARTS LIST	

DIMENSIONS IN INCHES. DO NOT SCALE PRINT. TOLERANCES UNLESS OTHERWISE SPECIFIED:			MATERIAL			FINISH		
DR	J.HERRINGTON	10/13/92	APP	-	-	-	-	-
2	PLC DEC ±							
3	PLC DEC ±							
4	PLC DEC ±							
ANGLES ±			REVISION RECORD			DATE		
SURF TEXTURE: ✓			REMOVE BURRS, BREAK SHARP EDGES R.015 MAX					
SCALE			DWG NO			SHEET REV		
-			D			1 OF 1		
-			567470			C		

THIS DRAWING IS A CONTROLLED DOCUMENT.

THIS DRAWING IS UNPUBLISHED. RELEASE FOR PUBLICATION BY AMP INCORPORATED. ALL RIGHTS RESERVED. COPYRIGHT 1989