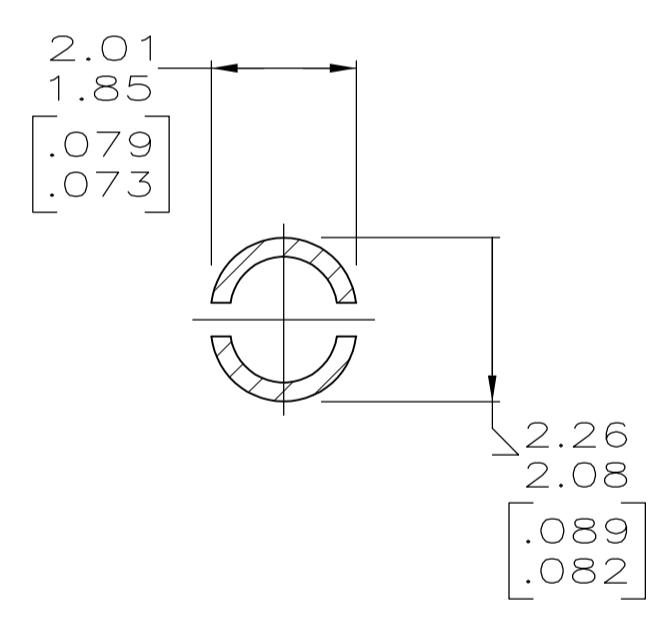
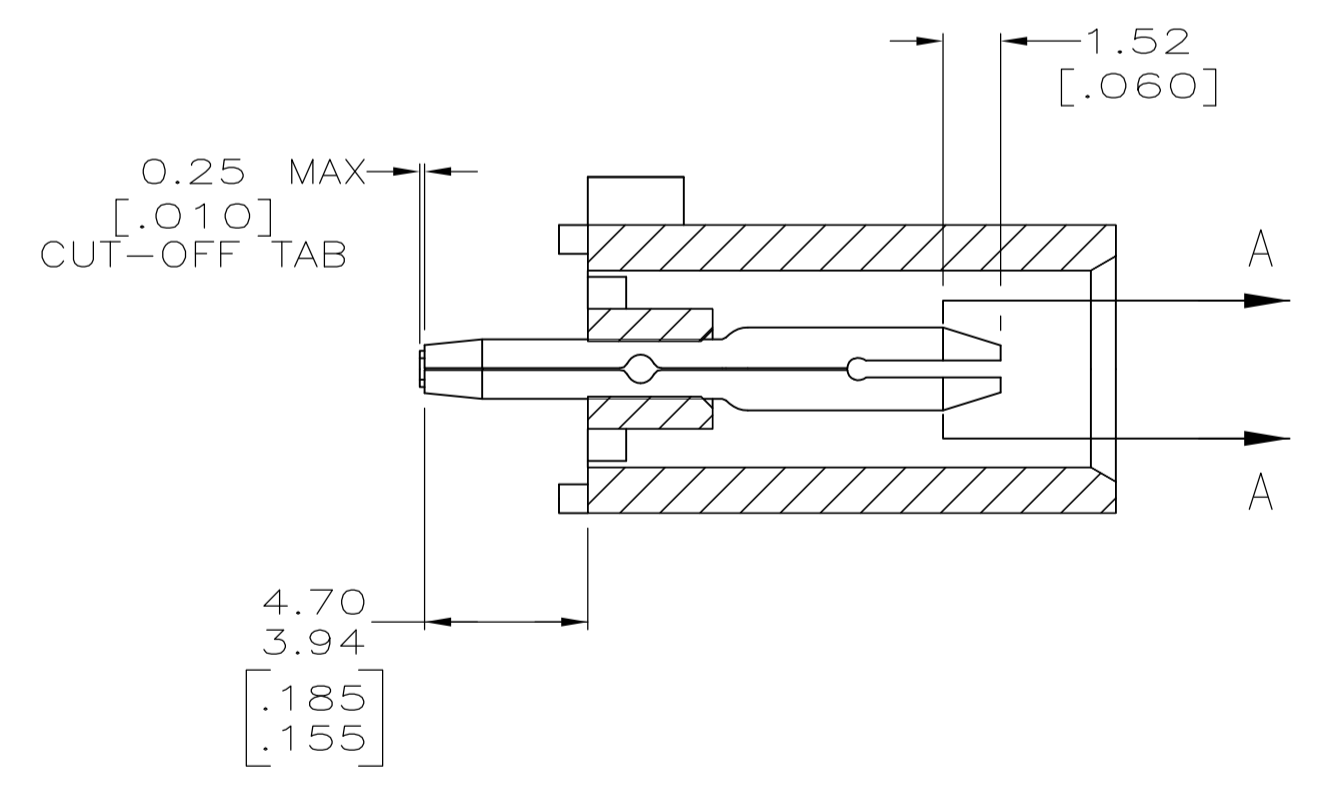
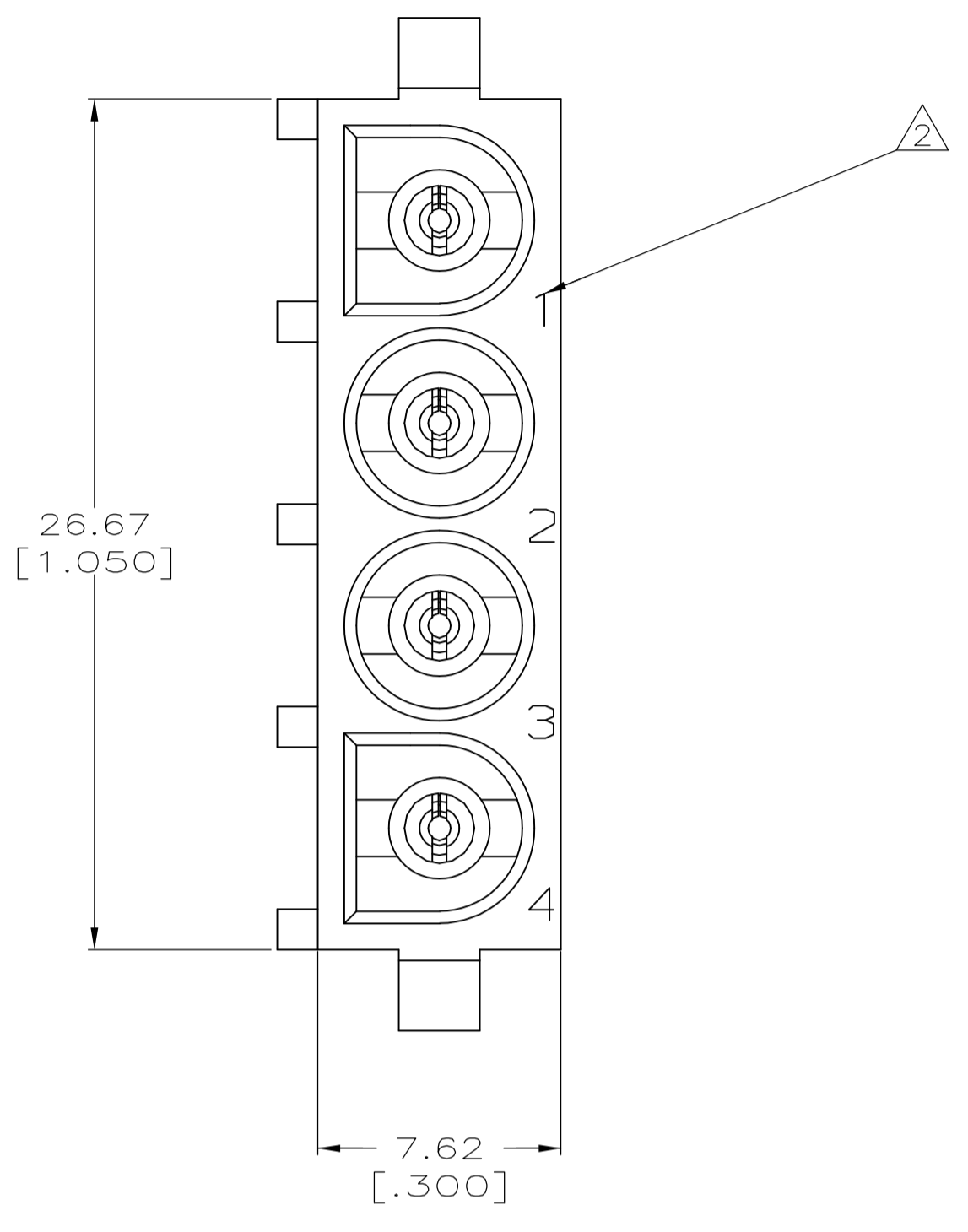
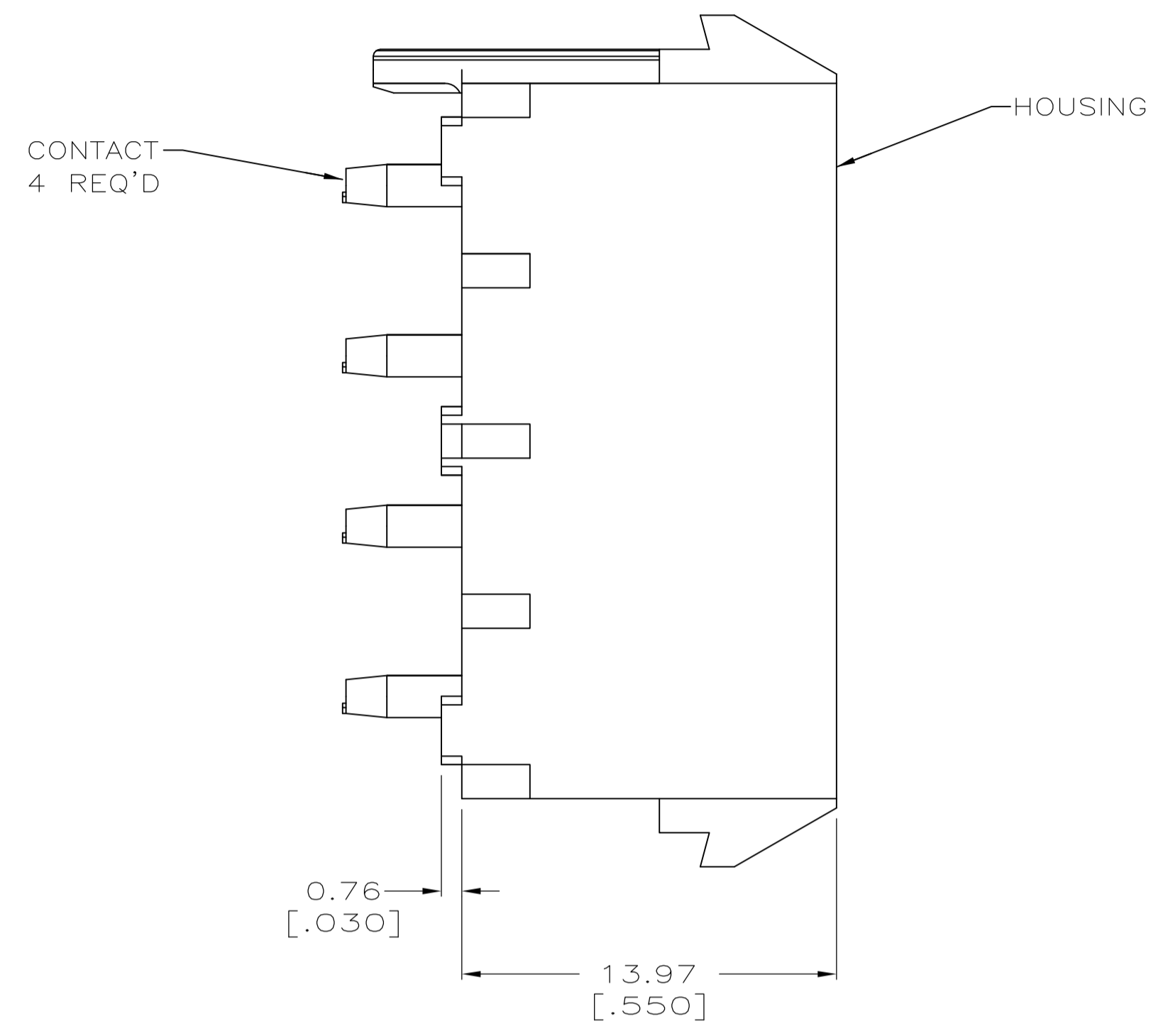
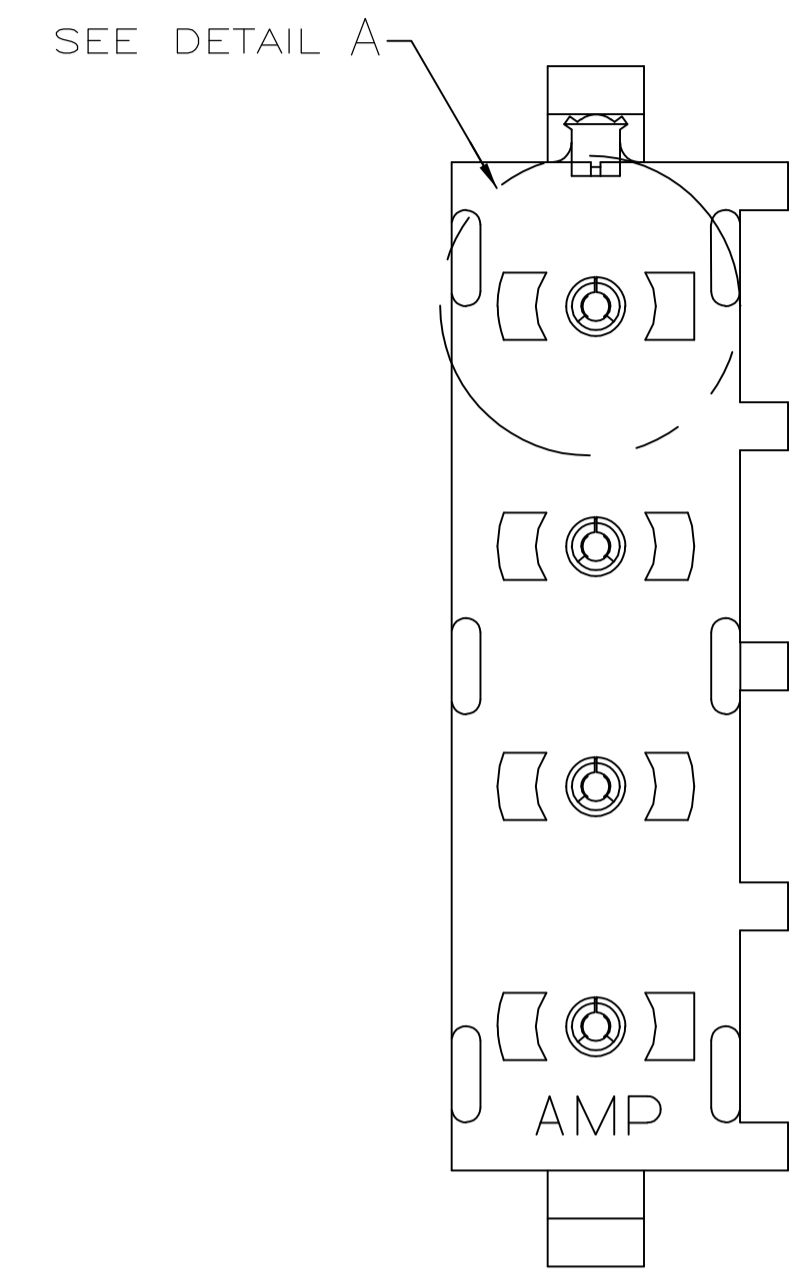
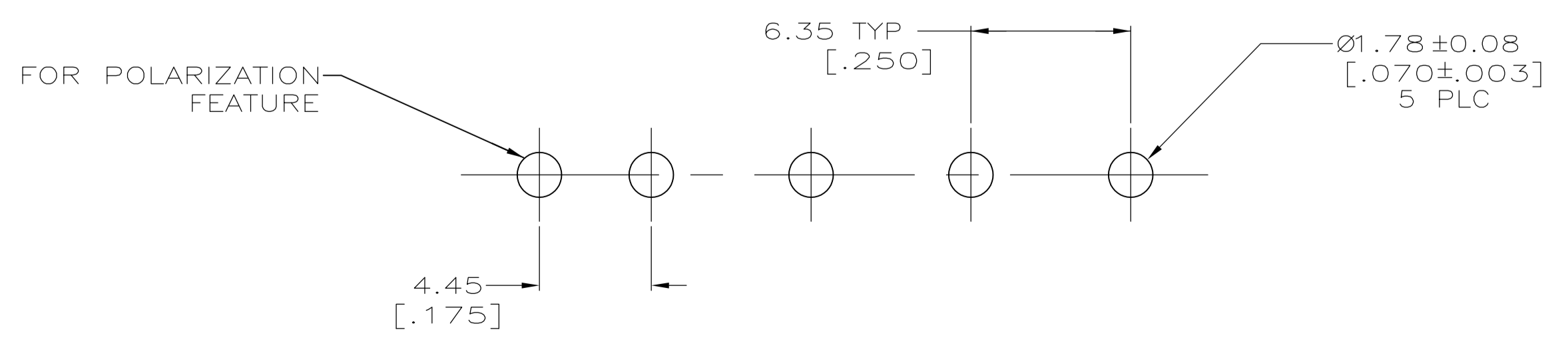
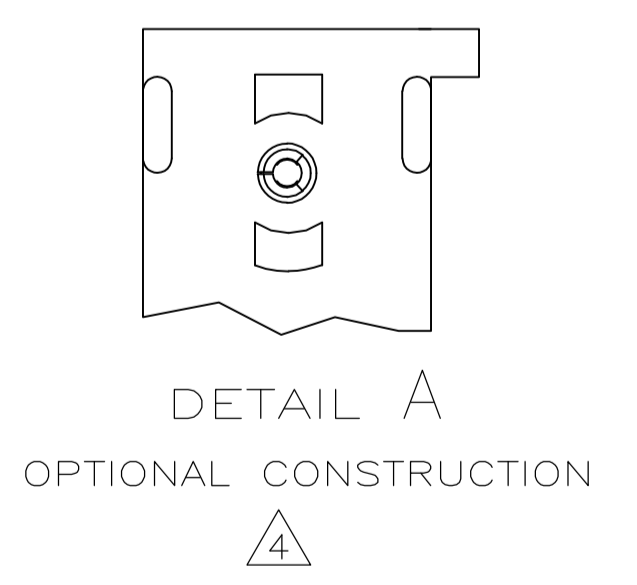
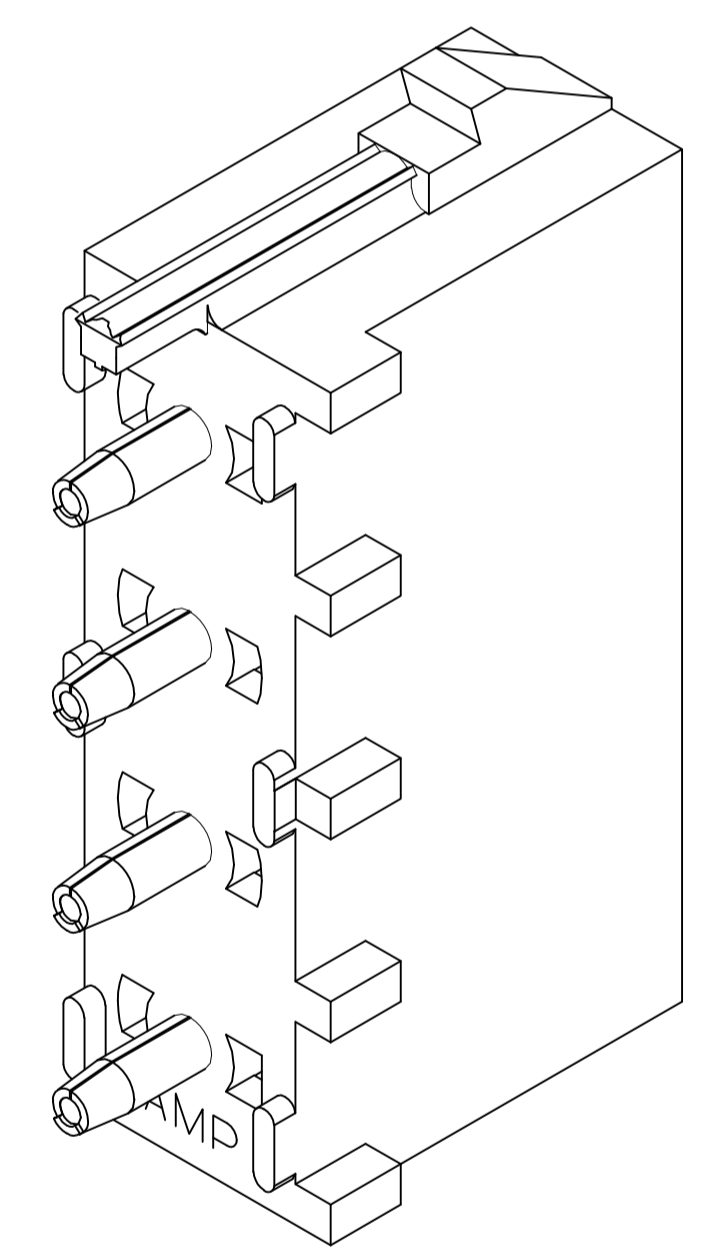


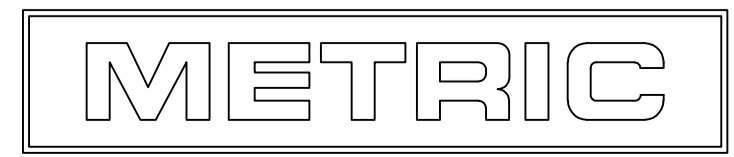
- PARTS COMPLY TO AMP SOLDERABILITY SPECIFICATION 109-11-3.
- CIRCUIT IDENTIFICATION CHARACTERS ARE ADJACENT TO THE INDICATED CAVITIES, BUT LOCATION AND ORIENTATION MAY DIFFER FROM PRINT.
- DIMENSIONS IN BRACKETS ARE IN INCHES.
- DRAIN HOLES LOCATED AS SHOWN. OPTIONAL CONSTRUCTION- ALL DRAIN HOLES LOCATED 90° AS SHOWN IN DETAIL A.
- FLAMMABILITY V-2 FOR THICKNESS 0.38mm, 0.75mm, 1.5mm AND 3.0mm PER IEC 60695-11-10.
- GLOW-WIRE FLAMMABILITY (GWFI) 800°C FOR THICKNESS 0.38mm AND 0.75mm PER 60695-2-12.
- GLOW-WIRE FLAMMABILITY (GWFI) 960°C FOR THICKNESS 1.5mm AND 3.0mm PER 60695-2-12.
- GLOW-WIRE IGNITION (GWI) 825°C FOR THICKNESS 0.38mm, 0.75mm, 1.5mm AND 3.0mm PER 60695-2-13.
- PRELIMINARY - NOT FOR PRODUCTION



SECTION A-A
SCALE 10:1



RECOMMENDED MOUNTING HOLE PATTERN
FOR 1.57 [.062] THICK P.C. BOARD



PHOSPHOR BRONZE, PRE-TIN	NYLON, UL94V-2,NATURAL	1586965-2
CONTACT MATERIAL / FINISH	HOUSING MATERIAL/COLOR	PART NO.
THIS DRAWING IS A CONTROLLED DOCUMENT.		DIN J RUTH 19DEC11
		CHK TOM MICHELUTTI 19DEC11
		APVD TOM MICHELUTTI 19DEC11
DIMENSIONS: mm		TOLERANCES UNLESS OTHERWISE SPECIFIED:
0 PLC ± -		1 PLC ± -
1 PLC ± -		2 PLC ± 0.13 [.005]
2 PLC ± -		3 PLC ± -
3 PLC ± -		4 PLC ± -
4 PLC ± -		ANGLES ± 0° 30'
MATERIAL SEE TABLE	FINISH SEE TABLE	WEIGHT -
CUSTOMER DRAWING		SCALE 5:1 SHEET 1 OF 1 REV B1