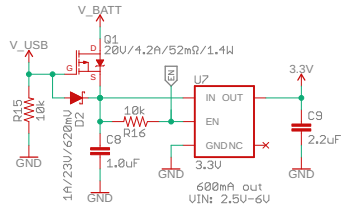
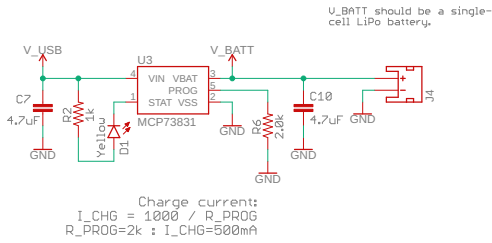


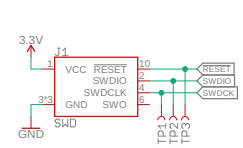
Voltage Regulator and Battery Charger



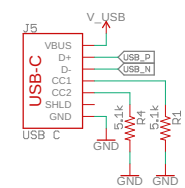
Lithium-Polymer Battery Charger (1-cell)



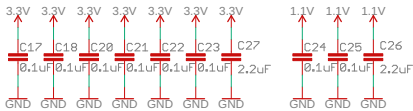
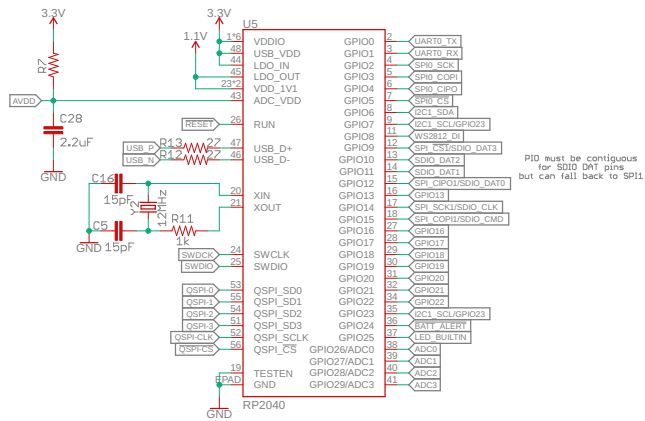
Debug Header



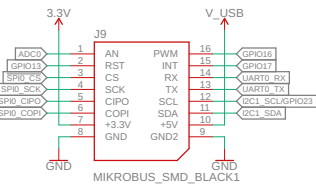
USB Connector



Raspberry Pi RP2040



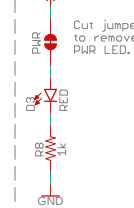
MikroBUS socket



Status LED



Power LED



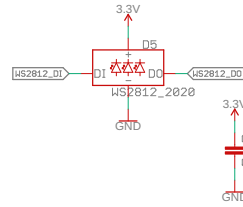
Boot Select



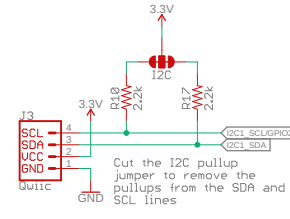
Reset Button



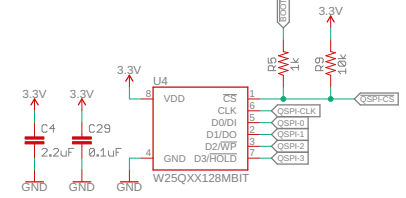
WS2812



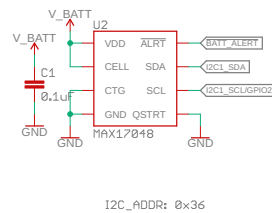
I2C Connector



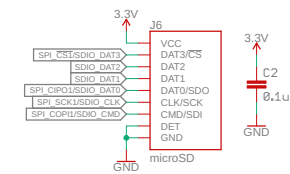
16MB / 128mbit Flash



Battery Fuel Gauge



uSD Connector



Headers

