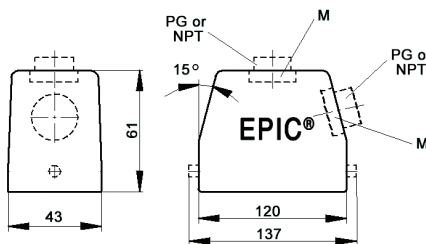
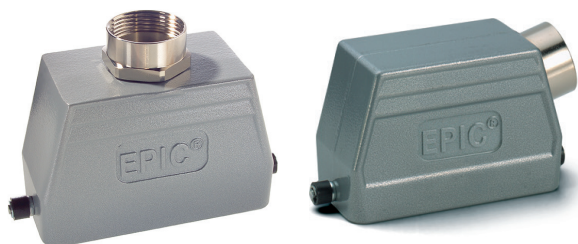


EPIC® HB 24 standard hood

Hood with single lever bolts




all dimensions are in mm

Technical data

IP Protection class: UL 50E Type 12
NEMA 4
IP65

Complete the installation

 HB dust covers
page 429

Approvals



PG

PG hood		SKINTOP® gland	
size	part number	plastic	metal
Top entry			
PG 21	101219	53015050	52015750
PG 29	101119	53015060	52015760
Side entry			
PG 21	101139	53015050	52015750
PG 29	101239	53015060	52015760

PG hood provided with EPIC® SM/SP gland

NPT

NPT hood		SKINTOP® gland	
size	part number	plastic	metal
Top entry			
¾"	101219NP	S1134	53112034
1"	101119NP	S1101	53112044
Side entry			
¾"	101139NP	S1134	53112034
1"	101239NP	S1101	53112044

NPT hood provided with NPT fitting

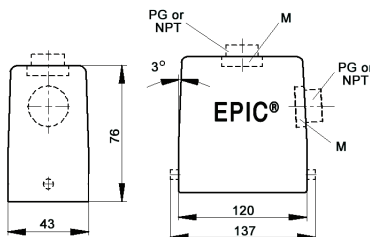
metric

Metric hood		SKINTOP® gland	
size	part number	plastic	metal
Top entry*			
M25	19121900	53111030	53112030
M32	19111900	53111040	53112040
Side entry			
M25	19113900	53111030	53112030
M32	19123900	53111040	53112040

* Metric top-entry hoods do not come with a neck

EPIC® HB 24 high profile hood

Hood with single lever bolts




all dimensions are in mm

Technical data

IP Protection class: UL 50E Type 12
NEMA 4
IP65

Complete the installation

 HB dust covers
page 429

Approvals



PG

PG hood		SKINTOP® gland	
size	part number	plastic	metal
Top entry			
PG 21	701444	53015050	52015750
PG 29	701446	53015060	52015760
Side entry			
PG 21	701544	53015050	52015750
PG 29	701546	53015060	52015760

PG hood provided with EPIC® SM/SP gland

NPT

NPT hood		SKINTOP® gland	
size	part number	plastic	metal
Top entry			
¾"	701444NP	S1134	53112034
1"	701446NP	S1101	53112044
Side entry			
¾"	701544NP	S1134	53112034
1"	701546NP	S1101	53112044

NPT hood provided with NPT fitting

metric

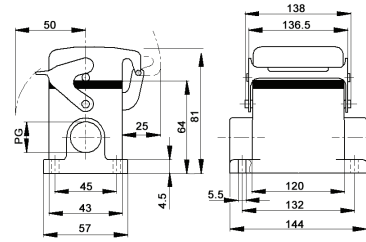
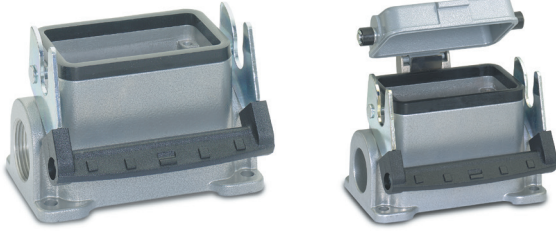
Metric hood		SKINTOP® gland	
size	part number	plastic	metal
Top entry*			
M25	79144400	53111030	53112030
M32	79144600	53111040	53112040
M40	79144800	53111050	53112050
Side entry			
M25	79154400	53111030	53112030
M32	79154600	53111040	53112040
M40	79154800	53111050	53112050

* Metric hoods do not come with a neck

Recommended SKINTOP® assumes minimal OD variance. Additional configurations are available; please see our SKINTOP® section.
If not otherwise specified, all values relating to the product are nominal values.
Photographs are not to scale and are not true representations of the products in question.

EPIC® HB 24 standard surface mount base

Surface mount base with single lever



all dimensions are in mm

Technical data

IP Protection class: UL 50E Type 12
NEMA 4
IP65

Complete the installation



HB dust covers
page 429

Approvals



PG

size	PG base		Dust cover	SKINTOP® gland	
	part number			plastic	metal
One entry					
21	101049		no	53015050	52015750
21	101079		yes	53015050	52015750
Two entries					
21	101059		no	53015050	52015750
21	101099		yes	53015050	52015750

PG base provided with EPIC® SM/SP gland

NPT

size	NPT base		Dust cover	SKINTOP® gland	
	part number			plastic	metal
One entry					
¾"	101049NP		no	S1134	53112034
¾"	101079NP		yes	S1134	53112034
Two entries					
¾"	101059NP		no	S1134	53112034
¾"	101099NP		yes	S1134	53112034

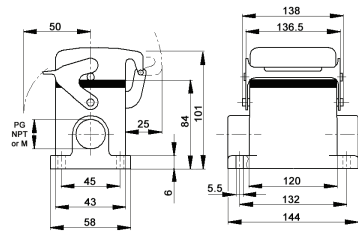
NPT base provided with NPT fitting

metric

size	Metric base		Dust cover	SKINTOP® gland	
	part number			plastic	metal
One entry					
25	19104900		no	53111030	53112030
25	19107900		yes	53111030	53112030
Two entries					
25	19105900		no	53111030	53112030
25	19109900		yes	53111030	53112030

EPIC® HB 24 high profile surface mount base

Surface mount base with single lever



all dimensions are in mm

Technical data

IP Protection class: UL 50E Type 12
NEMA 4
IP65

Complete the installation



HB dust covers
page 429

Approvals



PG

size	PG base		Dust cover	SKINTOP® gland	
	part number			plastic	metal
One entry					
21	701602		no	53015050	52015750
21	701642		yes	53015050	52015750
29	701604R		no	53015060	52015760
29	701644		yes	53015060	52015760
Two entries					
21	701112		no	53015050	52015750
21	701152		yes	53015050	52015750
29	701114		no	53015060	52015760
29	701154		yes	53015060	52015760

PG base provided with EPIC® SM/SP gland

NPT

size	NPT base		Dust cover	SKINTOP® gland	
	part number			plastic	metal
One entry					
¾"	701602NP		no	S1134	53112034
¾"	701642NP		yes	S1134	53112034
1"	701604NP		no	S1101	53112044
1"	701644NP		yes	S1101	53112044
Two entries					
¾"	701612NP		no	S1134	53112034
¾"	701652NP		yes	S1134	53112034
1"	701614NP		no	S1101	53112044
1"	701654NP		yes	S1101	53112044

NPT base provided with NPT fitting

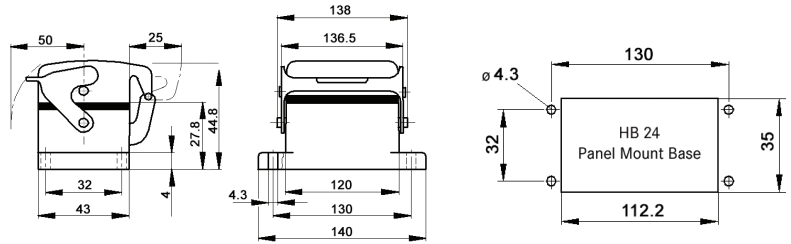
metric

size	Metric base		Dust cover	SKINTOP® gland	
	part number			plastic	metal
One entry					
25	79160200		no	53111030	53112030
25	79164200		yes	53111030	53112030
32	79160400		no	53111040	53112040
32	79164400		yes	53111040	53112040
Two entries					
25	79161200		no	53111030	53112030
25	79165200		yes	53111030	53112030
32	79161400		no	53111030	53112030
32	79165400		yes	53111030	53112030

Photographs are not to scale and are not true representations of the products in question. Recommended SKINTOP® assumes minimal OD variance. Additional configurations are available; please see our SKINTOP® section. If not otherwise specified, all values relating to the product are nominal values.

EPIC® HB 24 panel mount base

Panel mount base with single lever



all dimensions are in mm

Technical data

IP Protection class: UL 50E Type 12
NEMA 4
IP65

Complete the installation



HB dust covers
page 429

Approvals



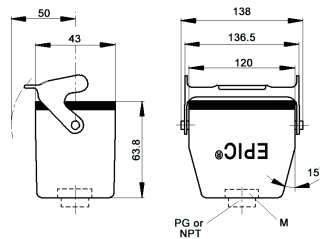
Dust cover included	Part number
no	10102900
yes	10103900

EPIC® HB 24 cable coupler hood

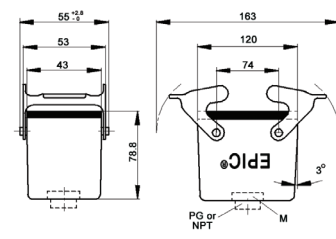
Cable coupler with single lever



standard profile



high profile



all dimensions are in mm

Technical data

IP Protection class: UL 50E Type 12
NEMA 4
IP65

Complete the installation



HB dust covers
page 429

Approvals



PG

PG coupler size	part number	SKINTOP® gland	
		plastic	metal
Standard profile			
PG 21	101279	53015050	52015750
PG 29	101179	53015060	52015760
High profile			
PG 21	701424	753015050	52015750
PG 29	701426	75015060	72015760

NPT

NPT coupler size	part number	SKINTOP® gland	
		plastic	metal
Standard profile			
¾"	101279NP	S 1134	53112034
1"	101179NP	S 1101	53112044
High profile			
¾"	701424NP	S 1134	53112034
1"	701426NP	S 1101	53112044

metric

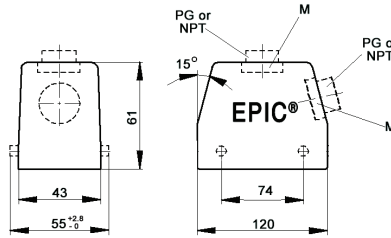
Metric coupler* size	part number	SKINTOP® gland	
		plastic	metal
Standard profile			
M25	19127900	53111030	53112030
M32	19117900	53111040	53112040
High profile			
M25	79142400	53111030	53112030
M32	79142600	53111040	53112040

* Metric couplers do not come with a neck

Recommended SKINTOP® assumes minimal OD variance. Additional configurations are available; please see our SKINTOP® section.
If not otherwise specified, all values relating to the product are nominal values.
Photographs are not to scale and are not true representations of the products in question.

EPIC® HB 24 standard hood

Hood with double lever bolts



all dimensions are in mm



Technical data

IP Protection class: UL 50E Type 4, 12
IP65

Complete the installation



HB dust covers
page 429

Approvals



PG

PG hood		SKINTOP® gland	
size	part number	plastic	metal
Top entry			
PG 21	101210	53015050	52015750
PG 29	101110	53015060	52015760
Side entry			
PG 21	101130	53015050	52015750
PG 29	101230	53015060	52015760

PG hood provided with EPIC® SM/SP gland

NPT

NPT hood		SKINTOP® gland	
size	part number	plastic	metal
Top entry			
3/4"	101210NP	S1134	53112034
1"	101110NP	S1101	53112044
Side entry			
3/4"	101130NP	S1134	53112034
1"	101230NP	S1101	53112044

NPT hood provided with NPT fitting

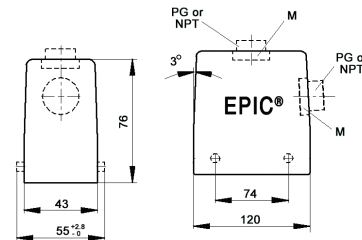
metric

Metric hood		SKINTOP® gland	
size	part number	plastic	metal
Top entry			
M25	19121000*	53111030	53112030
M25x2	44422019	53111030	53112030
M32	19111000*	53111040	53112040
M32x2	44422020	53111040	53112040
Side entry			
M25	19113000	53111030	53112030
M32	19123000	53111040	53112040

* Metric top-entry hoods do not come with a neck

EPIC® HB 24 high profile hood

Hood with double lever bolts



all dimensions are in mm



Technical data

IP Protection class: UL 50E Type 4, 12
IP65

Complete the installation



HB dust covers
page 429

Approvals



PG

PG hood		SKINTOP® gland	
size	part number	plastic	metal
Top entry			
PG 21	701504	53015050	52015750
PG 29	701506	53015060	52015760
Side entry			
PG 21	701524	53015050	52015750
PG 29	701526	53015060	52015760

PG hood provided with EPIC® SM/SP gland

NPT

NPT hood		SKINTOP® gland	
size	part number	plastic	metal
Top entry			
3/4"	701504NP	S1134	53112034
1"	701506NP	S1101	53112044
Side entry			
3/4"	701524NP	S1134	53112034
1"	701526NP	S1101	53112044

NPT hood provided with NPT fitting

metric

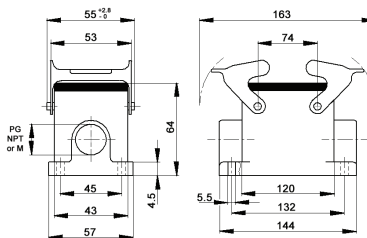
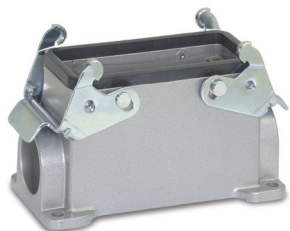
Metric hood		SKINTOP® gland	
size	part number	plastic	metal
Top entry*			
M25	79150400	53111030	53112030
M25x2	44422021	53111030	53112030
M32	79150600	53111040	53112040
M32x2	79178500	53111040	53112040
M40	79150800	53111050	53112050
Side entry			
M25	79152400	53111030	53112030
M32	79152600	53111040	53112040
M40	79152800	53111050	53112050

* Metric hoods do not come with a neck

Recommended SKINTOP® assumes minimal OD variance. Additional configurations are available; please see our SKINTOP® section.
If not otherwise specified, all values relating to the product are nominal values.
Photographs are not to scale and are not true representations of the products in question.

EPIC® HB 24 standard surface mount base

Surface mount base with double levers




all dimensions are in mm

Technical data

IP Protection class: UL 50E Type 4, 12
IP65

Complete the installation

 HB dust covers
page 429

Approvals



PG

PG base		SKINTOP® gland	
size	part number	plastic	metal
One entry			
PG 21	101040	53015050	52015750
Two entries			
PG 21	101050	53015050	52015750

PG base provided with EPIC® SM/SP gland

NPT

NPT base		SKINTOP® gland	
size	part number	plastic	metal
One entry			
3/4"	101040NP	S 1134	53112034
Two entries			
3/4"	101050NP	S 1134	53112034

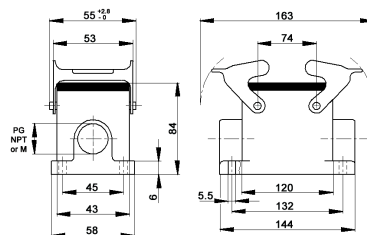
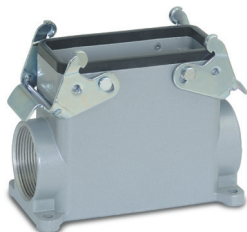
NPT base provided with NPT fitting

metric

Metric base		SKINTOP® gland	
size	part number	plastic	metal
One entry			
M25	19104000	53111030	53112030
Two entries			
M25	19105000	53111030	53112030

EPIC® HB 24 high profile surface mount base

Surface mount base with double levers




all dimensions are in mm

Technical data

IP Protection class: UL 50E Type 4, 12
IP65

Complete the installation

 HB dust covers
page 429

Approvals



PG

PG base		SKINTOP® gland	
size	part number	plastic	metal
One entry			
PG 29	701354	53015060	52015760
Two entries			
PG 21	701362	53015050	52015750
PG 29	701364	53015060	52015760

PG base provided with EPIC® SM/SP gland

NPT

NPT base		SKINTOP® gland	
size	part number	plastic	metal
One entry			
3/4"	701352NP	S 1134	53112034
1"	701354NP	S 1101	53112044
Two entries			
3/4"	701362NP	S 1134	53112034
1"	701364NP	S 1101	53112044

NPT base provided with NPT fitting

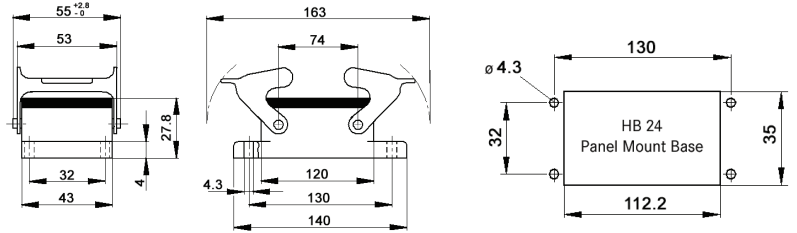
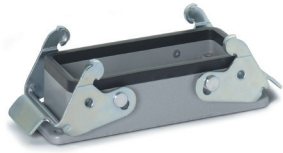
metric

Metric base		SKINTOP® gland	
size	part number	plastic	metal
One entry			
M25	79135200	53111030	53112030
M32	79135400	53111040	53112040
Two entries			
M25	79136200	53111030	53112030
M32	79136400	53111040	53112040

Recommended SKINTOP® assumes minimal OD variance. Additional configurations are available; please see our SKINTOP® section.
If not otherwise specified, all values relating to the product are nominal values.
Photographs are not to scale and are not true representations of the products in question.

EPIC® HB 24 panel mount base

Panel mount base with double levers



all dimensions are in mm

Technical data

IP Protection class: UL 50E Type 4, 12 IP65

Complete the installation

HB dust covers page 429

Approvals

UL US RoHS

Dust cover included	Part number
no	101020C0

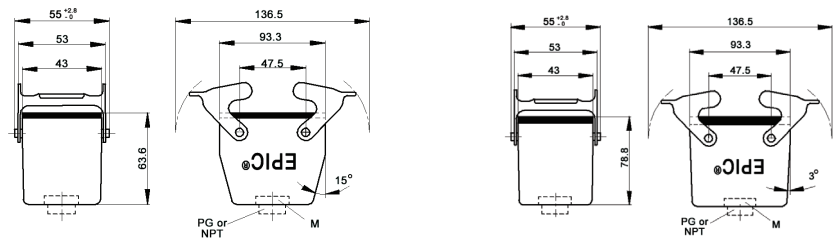
EPIC® HB 24 cable coupler hood

Cable coupler with double levers



standard profile

high profile



all dimensions are in mm

Technical data

IP Protection class: UL 50E Type 4, 12 IP65

Complete the installation

HB dust covers page 429

Approvals

UL US RoHS DE

PG

PG coupler size	part number	SKINTOP® gland	
		plastic	metal
Standard profile			
PG 21	101270	53015050	52015750
PG 29	101170	53015060	52015760
High profile			
PG 21	701404R	53015050	52015750

PG coupler provided with EPIC® SM/SP gland

NPT

NPT coupler size	part number	SKINTOP® gland	
		plastic	metal
Standard profile			
3/4"	101270NP	S 1134	53112034
1"	101170NP	S 1101	53112044
High profile			
3/4"	701404NP	S 1134	53112034
1"	701406NP	S 1101	53112044

NPT coupler provided with NPT fitting

metric

Metric coupler* size	part number	SKINTOP® gland	
		plastic	metal
Standard profile			
M25	19127000	53111030	53112030
M32	19117000	53111040	53112040
High profile			
M25	79140400	53111030	53112030
M32	79140600	53111040	53112040

* Metric couplers do not come with a neck

Recommended SKINTOP® assumes minimal OD variance. Additional configurations are available; please see our SKINTOP® section. If not otherwise specified, all values relating to the product are nominal values. Photographs are not to scale and are not true representations of the products in question.