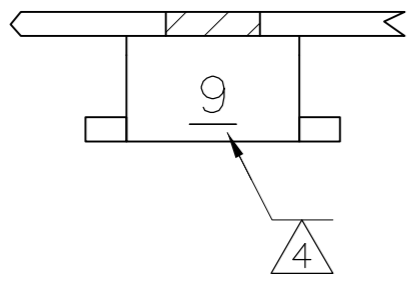
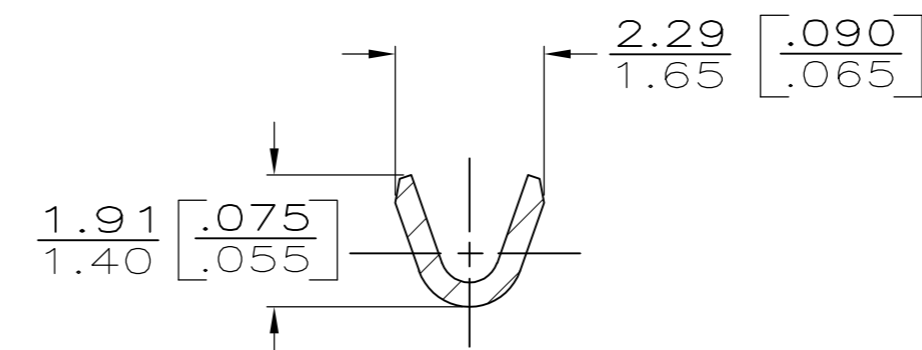
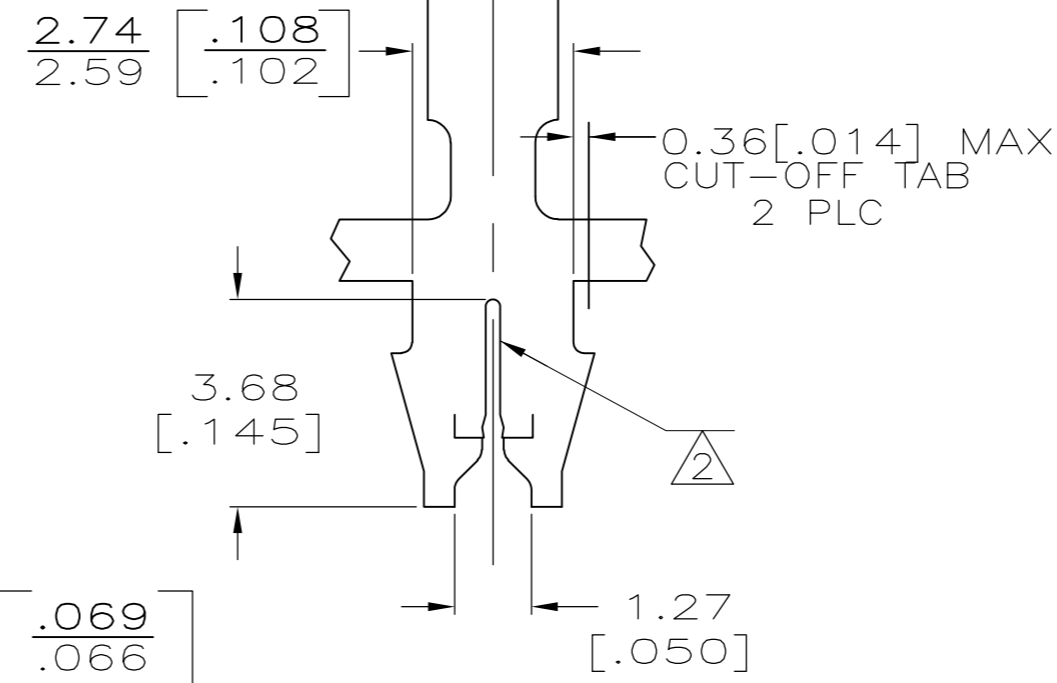
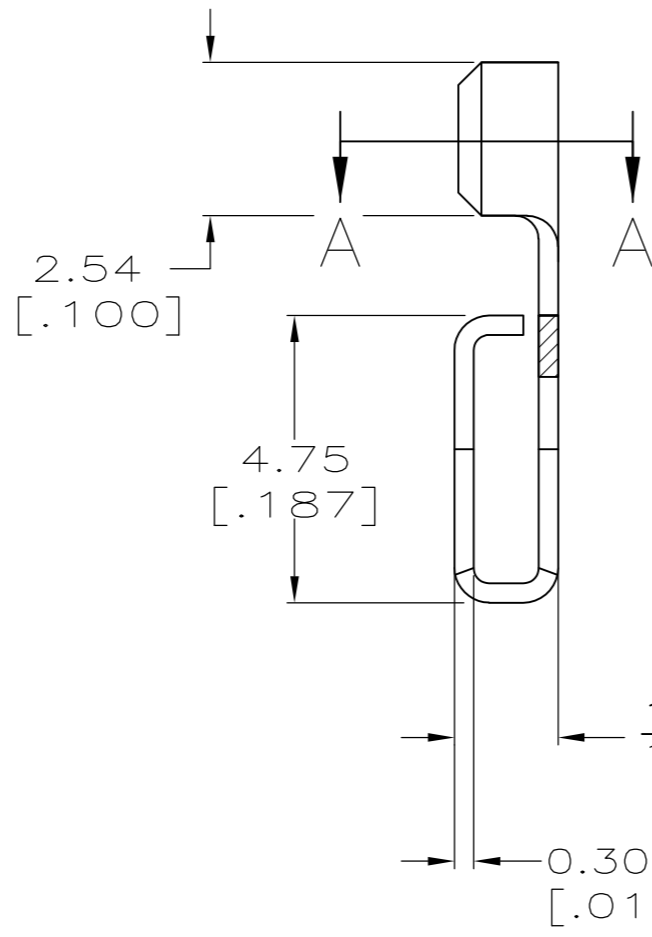
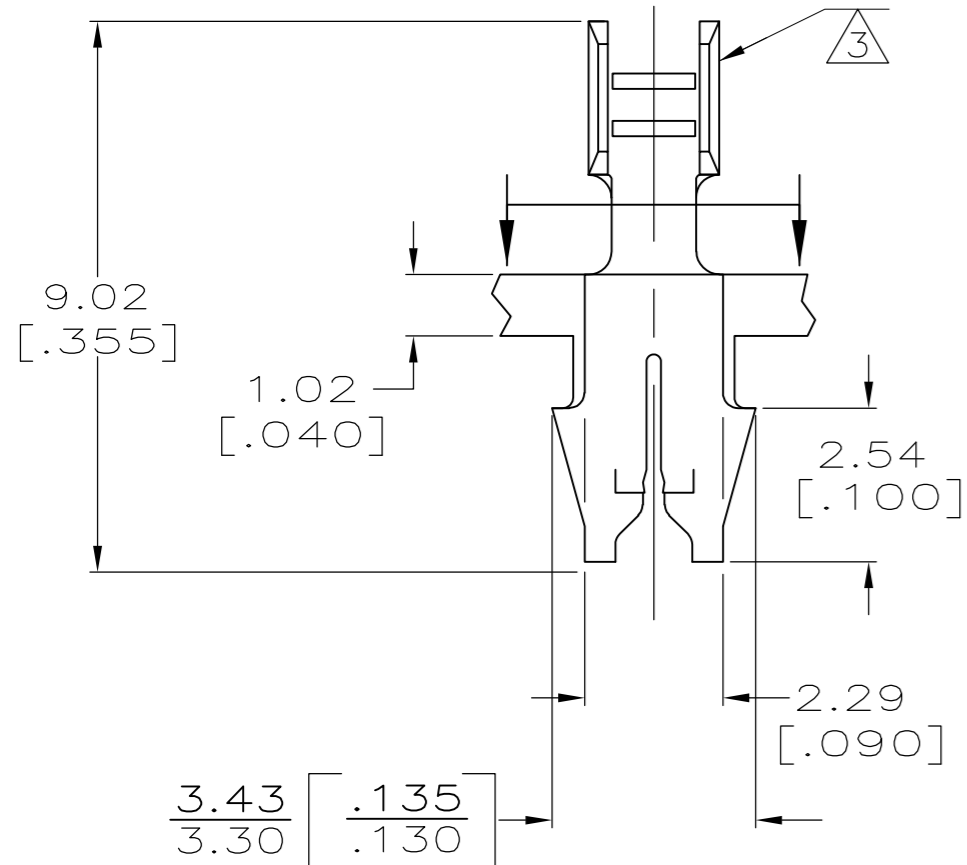


THIS DRAWING IS UNPUBLISHED. RELEASED FOR PUBLICATION
 © COPYRIGHT - By - ALL RIGHTS RESERVED.

LOC	DIST	REVISIONS			
P	LTR	DESCRIPTION	DATE	DWN	APVD
AF	50	N1	ECR-13-017177	05NOV13	PKS RRP



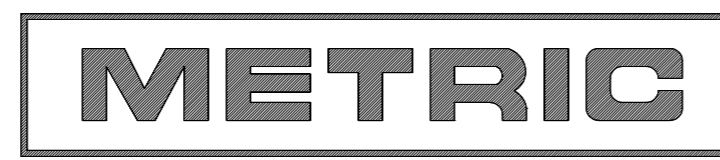
- 1 CONTINUOUS STRIP ON REELS WITH TERMINALS LOCATED ON 5.08[.200] CENTERS.
- ② SLOT ACCEPTS A 0.36-0.45 mm DIA [#27-#25] AWG COPPER MAGNET WIRE ONLY (2 WIRES MAX).
- ③ WIRE BARREL ACCEPTS 0.12-0.40 mm² [#26-#22] AWG LEAD WIRE.
- ④ IDENTIFICATION NUMBER FOR MAGNET WIRE RANGE.



SECTION A-A
 ROTATED 90° CW

OBSOLETE	BENCH INSERTION MACHINE	62609-3
	REVERSE REEL OF 62609-1	62609-2
	MINI-APPLICATOR	62609-1
	REELING	PART NO
	TIN PER MIL-T-10727	

3.56 [.140]	F	1.40 [.055]	0.97 [.038] 0.89 [.035] 0.86 [.034]	0.35 [.22] 0.20 [.24] 0.14 [.26]
STRIP LENGTH ±.015	TYPE	WIDTH	±0.051[±002] HEIGHT	WIRE
WIRE BARREL CRIMP				



THIS DRAWING IS A CONTROLLED DOCUMENT.		DWN DK SCHRUM 8/3/89	STE TE Connectivity	
DIMENSIONS: INCHES		CHK MS FEHER 8/16/89		
TOLERANCES UNLESS OTHERWISE SPECIFIED:		APVD NE NEFF 8/16/89	NAME	
0 PLC ± -		PRODUCT SPEC	TERMINAL, F CRIMP, MAG-MATE™	
1 PLC ± -		APPLICATION SPEC	-	
2 PLC ± -		114-2069	SIZE A2	CAGE CODE 00779
3 PLC ± 0.38[.015]		WEIGHT -	DRAWING NO C=62609	RESTRICTED TO -
4 PLC ± -		CUSTOMER DRAWING	SCALE 8:1	SHEET 1 of 1
ANGLES ± -			REV N1	
FINISH SEE TABLE				