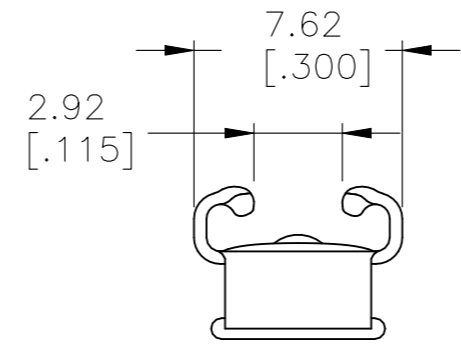
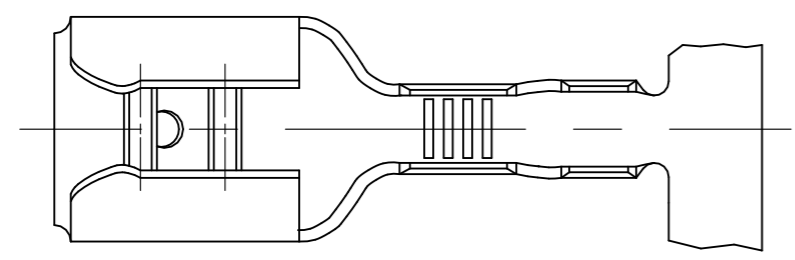
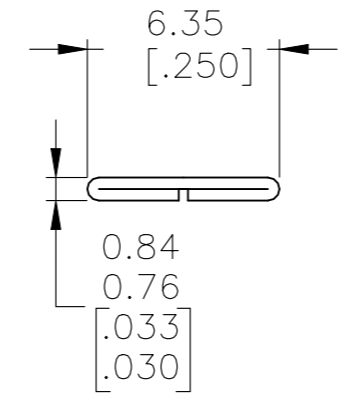
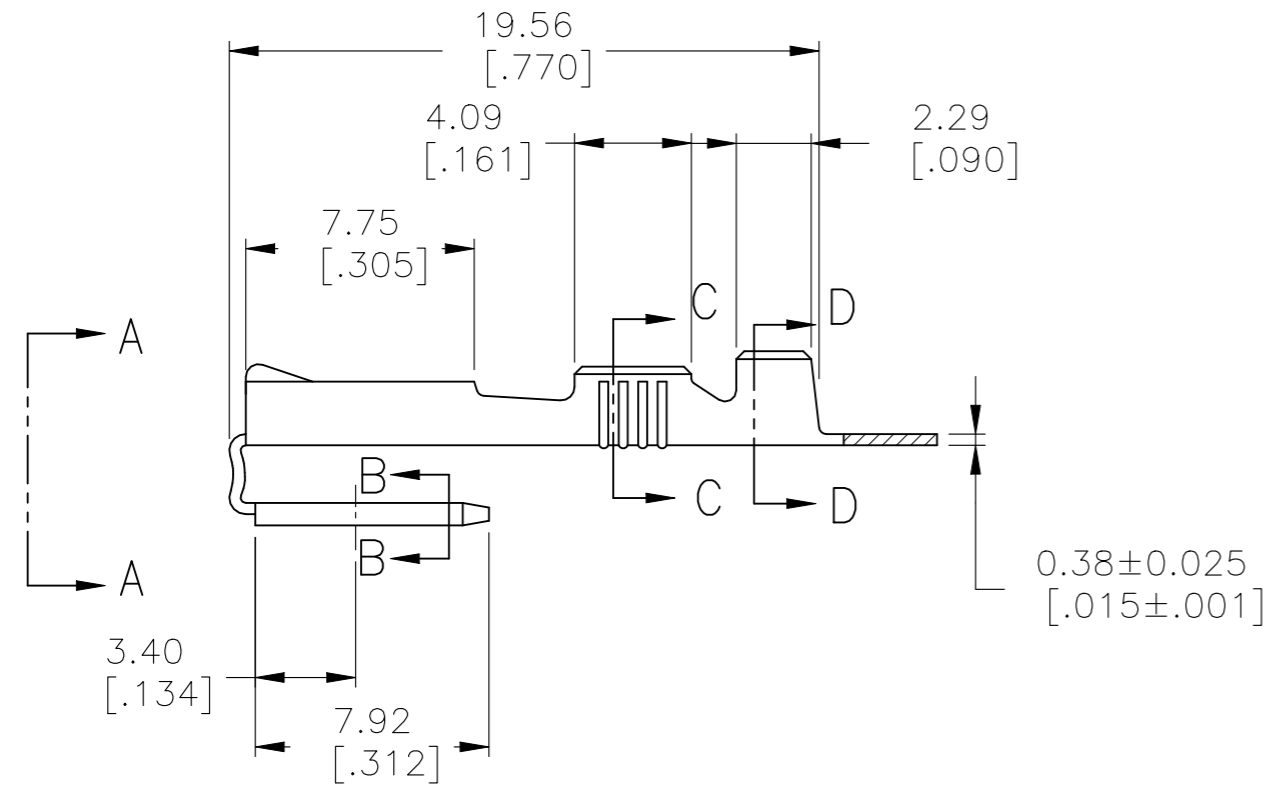


REVISIONS				
P	LTR	DESCRIPTION	DATE	APVD
	K1	REVISED PER ECR-21-113405	31MAY2022	SS DH

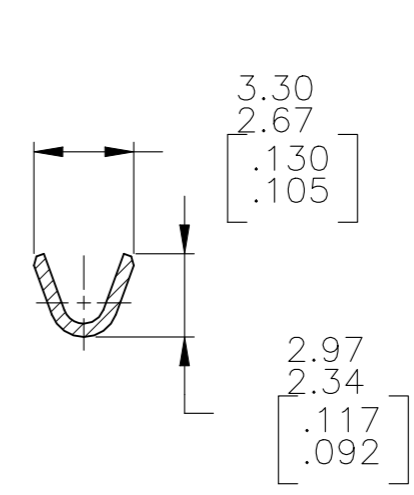


VIEW A-A

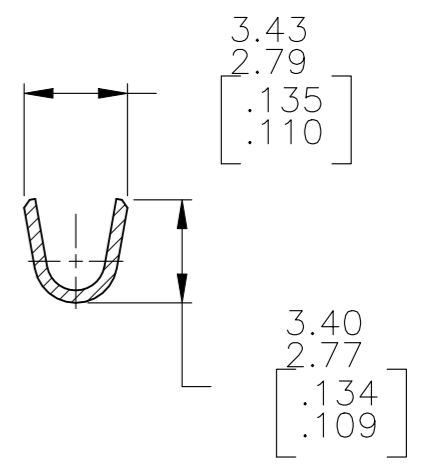
- 1 - CONTINUOUS STRIP ON REELS.
- △ 2 - STRESS RELIEVED
- 3 - THE GAP ON THE ROLLS TO BE IN CONTACT WITH THE TAB FOR THE LENGTH OF THE ROLL BEHIND THE LEAD-IN.



SECTION B-B



SECTION C-C



SECTION D-D

△ 2	TIN	1.52-2.54 [.060-.100]	#22-#18 AWG	0.81±0.025 [.032±.001]	61988-3
	TIN				61988-2
	-				61988-1
FINISH	INSUL RANGE	WIRE SIZE	MATING TAB THICKNESS	PART NUMBER	

THIS DRAWING IS A CONTROLLED DOCUMENT.		DWN JR RUTH 5/14/86	TE Connectivity														
DIMENSIONS: mm [INCHES]		CHK MS FEHER 5/14/86															
TOLERANCES UNLESS OTHERWISE SPECIFIED:		APVD C NEYERS 5/16/86	NAME RECEPTACLE, FASTON, PIGGYBACK, 6.35 [.250] SERIES														
<table border="0"> <tr><td>0 PLC</td><td>± -</td></tr> <tr><td>1 PLC</td><td>± -</td></tr> <tr><td>2 PLC</td><td>± -</td></tr> <tr><td>3 PLC</td><td>± 0.38 [.015]</td></tr> <tr><td>4 PLC</td><td>± -</td></tr> <tr><td>ANGLES</td><td>± -</td></tr> </table>		0 PLC	± -	1 PLC	± -	2 PLC	± -	3 PLC	± 0.38 [.015]	4 PLC	± -	ANGLES	± -	PRODUCT SPEC -	APPLICATION SPEC 114-2082		
0 PLC	± -																
1 PLC	± -																
2 PLC	± -																
3 PLC	± 0.38 [.015]																
4 PLC	± -																
ANGLES	± -																
MATERIAL BRASS	FINISH SEE TABLE	WEIGHT 0.000000	SIZE A3	CAGE CODE 00779	DRAWING NO C-61988												
CUSTOMER DRAWING			RESTRICTED TO -	SCALE 4:1	SHEET 1 OF 1												
			REV K1														