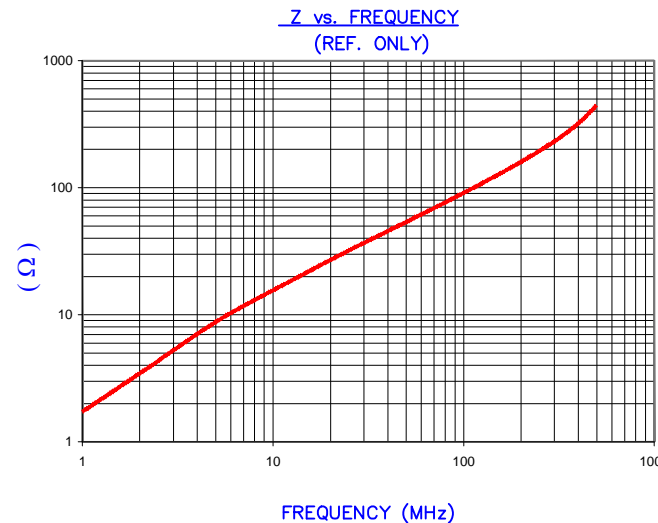


DETAIL "A"
CHAMFER
SCALE=15:1

NOTES:

1. COSMETIC SPECIFICATION REFER TO WI-QA-038.

IMPEDANCE (Z)			
Frequency	25 MHz	100 MHz	300 MHz
Nominal (REF)	32 Ω	91 Ω	227 Ω
Minimum	- Ω	82 Ω	- Ω

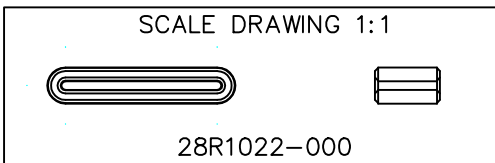


AGILENT E4991A Impedance/Material Analyzer
HP 16092A-Test Fixture ref 5679

FERRITE CORE DIMENSIONS (SPEC): mm [in]

A	26.00 [1.022]	+	0.50 [.020]
B	22.00 [.866]	+	0.48 [.019]
C	9.00 [.354]	+	0.30 [.012]
D	5.00 [.197]	+	0.30 [.012]
E	1.20 [.047]	+	0.30 [.012]
		-	0.25 [.010]

WEIGHT/1000 4.26 kgs [9.39 Lbs]



DIMENSIONS ARE IN mm[INCHES].				This print is the property of Laird Tech. and is loaned in confidence subject to return upon request and with the understanding that no copies shall be made without the written consent of Laird Tech. All rights to design or invention are reserved.		Laird		
F	UPDATE LOGO, ADD NOTES	03/14/2019	Jcai	PROJECT/PART NUMBER:		REV	PART TYPE:	DRAWN BY:
E	UPDATE COMPANY LOGO	03/17/08	JRK	28R1022-000		F	FERRITE RIBBON CORE	JRK
D	UPDATE Z SPECS ADD CURVE	05/25/06	JRK	DATE:	04/07/06	SCALE:	3 : 1	MATERIAL:
C	ROUND PART UPDATE WGT & DIMS	04/18/06	JRK	CAD #	28R1022-000-F	TOOL #	R1022	Ferrite
B	ADD Z SPECS CHANGE TOLERANCES	04/10/06	JRK	REV				
A	ORIGINAL DRAFT	04/07/06	JRK					
REV	DESCRIPTION	DATE	INT					