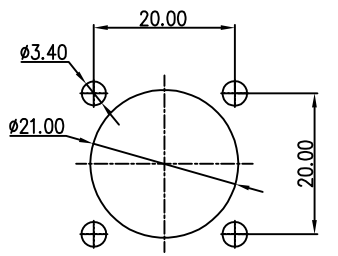
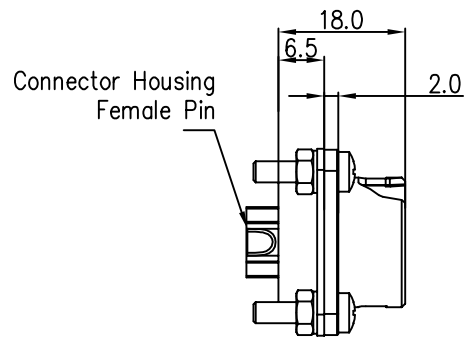


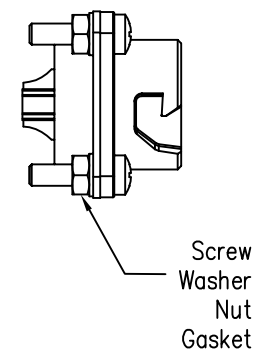
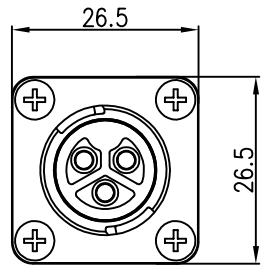
REV.	ECN NO.	DESCRIPTION	SIGN	DATE
C1	N/A	INITIAL DRAWING	Liu	2020/05/16



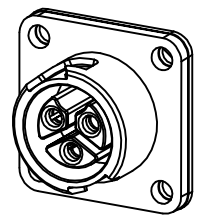
Recommended Panel Cut-Out
Panel Thickness Max 4mm



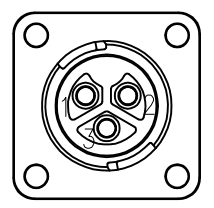
Connector Housing
Female Pin



Screw
Washer
Nut
Gasket



23XXX636-04
Pin Number



3 Pin

P/N: 23003636-04

Pin Assignments
Front View

Specification:

- 1.Operation Temperature: -45℃~105℃.
- 2.Insulation Resistance:100MΩ at DC500V.
- 3.Contact Resistance:<10mΩ.
- 4.Withstand Voltage:2000V AC, 1min
- 5.Operating Current: 20A
- 6.Operating Voltage:AC 300V
- 7.Waterproof Rate:IP67 (Mated)
- 8.Housing: Nylon, Black
- 9.Female Pin: Copper Alloy, Tin Plated
- 10.Gasket: Silicon Black
- 11.Screw: Stainless Steel
- 12.Washer: Stainless Steel
- 13.Nut: Stainless Steel
- 14.RoHS Compliant.

UNIT:mm	
TOLERANCE	
.X	±0.25
.XX	±0.15
.XXX	±0.05
ANGLES	±1°

DESCRIPTION Middle Series Push Lock Square Flange Mount With Female Pin			
SCALE:	1:1	SHEET	1 OF 1
REV.	C1	SIZE	A4
* :Inspection Item			

CHOGORI

PART NO	23003636-04	DRAWN BY	Liu	DATE	2020/05/16
DWG NO		CHECKED BY	Mo	DATE	2020/05/16
CUSTOMER		APPROVED BY	Adley	DATE	2020/05/16

THIS INFORMATION IS CONFIDENTIAL AND IS DISCLOSED TO YOU ON CONDITION THAT NO FURTHER DISCLOSURE IS MADE BY YOU TO OTHER THAN CHOGORI PERSONNEL WITHOUT AUTHORIZATION FROM CHOGORI CORP.