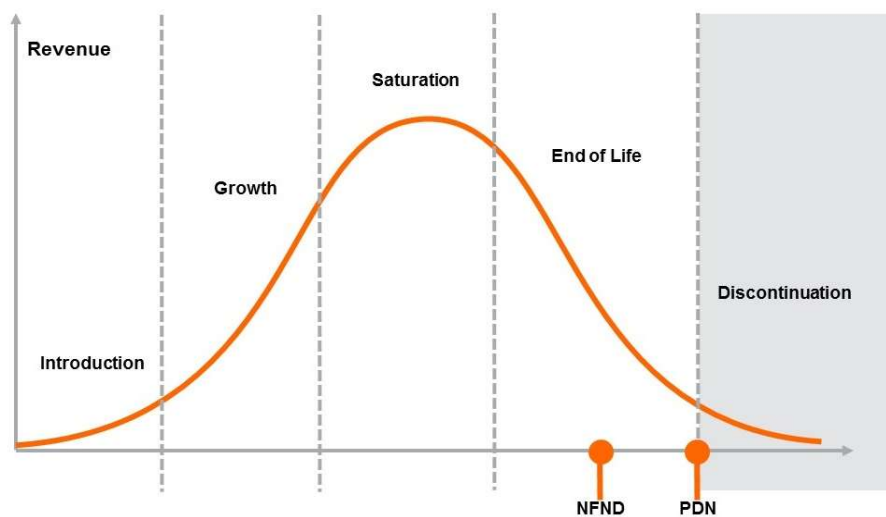


Light is OSRAM

Product Or Individual Q-Code Discontinuation (acc. JEDEC J-STD-048)
OS-PDN-2021-083

01 July 2021

Last order: 30 August 2021
Last delivery: 30 December 2021



Please direct your feedback to your local Sales office.

| DISCONTINUED | | | | NEW (REPLACEMENT) | | |
|--|---------------|--------------|--------------------------------------|-------------------|-------------------------|-------|
| Device | Ordering Code | Brand | Reason for discontinuation | Device | Datasheet Ordering Code | Brand |
| GW JTLPS2.EM-AEAG-XX58-L2M2-120-R33-SA | Q65113A2328 | DURIS E 2835 | No sufficient future volume forecast | No Replacement | | |
| GW JTLPS2.EM-AFAH-XX57-L2M2-120-R33-SA | Q65113A2329 | DURIS E 2835 | No sufficient future volume forecast | No Replacement | | |
| GW JTLPS2.EM-AGAJ-XX56-L2M2-120-R33-SA | Q65113A2330 | DURIS E 2835 | No sufficient future volume forecast | No Replacement | | |
| GW JTLPS2.EM-AHAK-XX55-L2M2-120-R33-SA | Q65113A2331 | DURIS E 2835 | No sufficient future volume forecast | No Replacement | | |
| GW JTLPS2.EM-AHAK-XX53-L2M2-120-R33-SA | Q65113A2332 | DURIS E 2835 | No sufficient future volume forecast | No Replacement | | |
| GW JTLPS2.EM-AHAK-XX51-L2M2-120-R33-SA | Q65113A2333 | DURIS E 2835 | No sufficient future volume forecast | No Replacement | | |