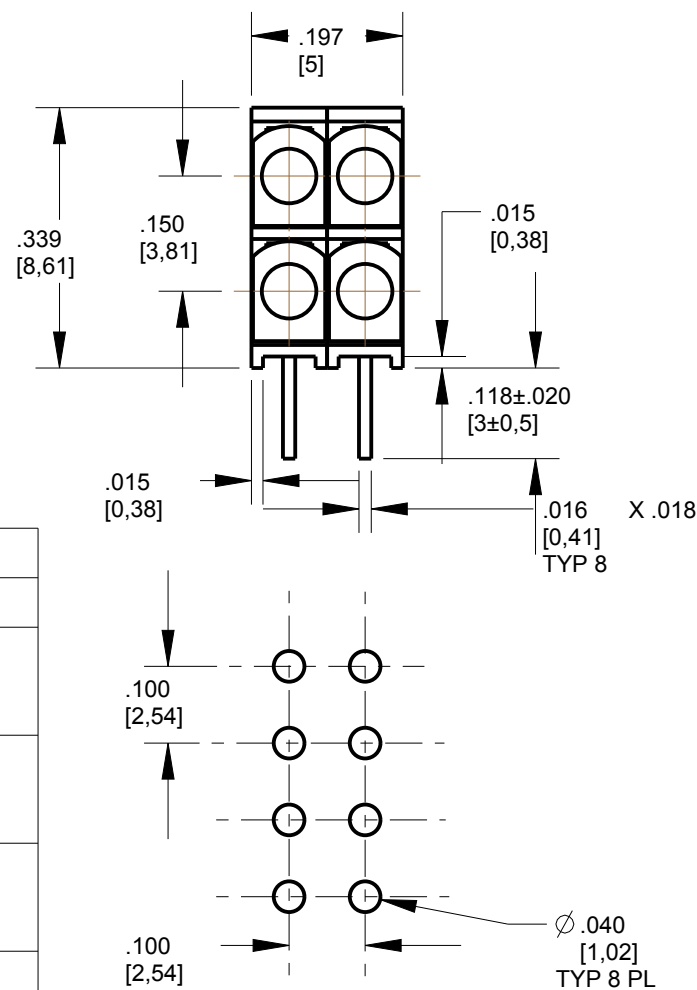
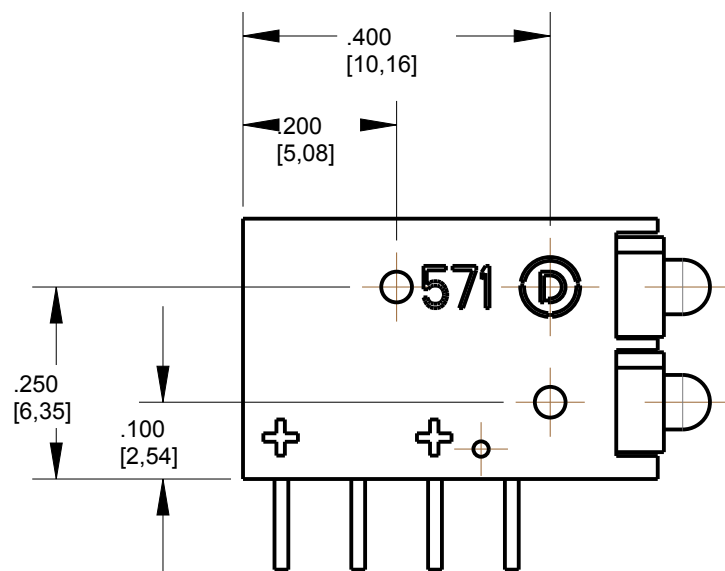


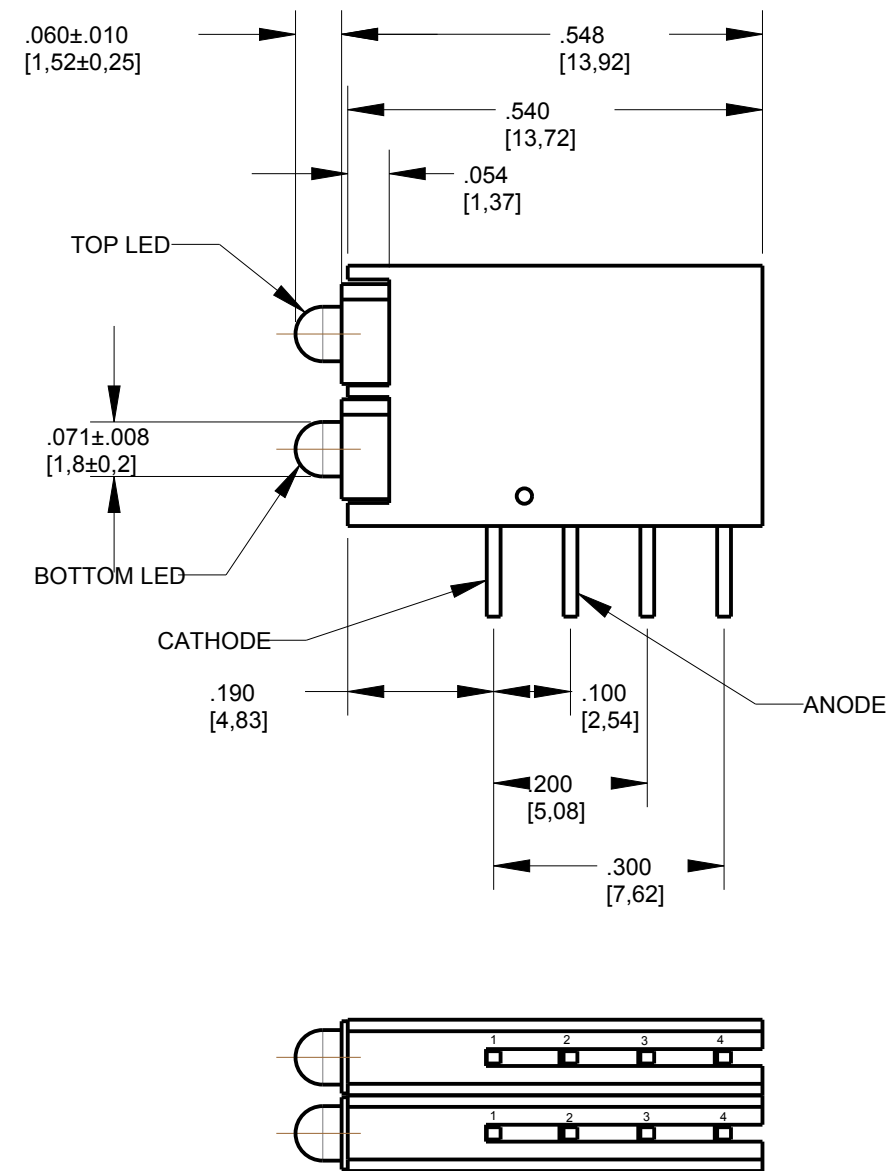
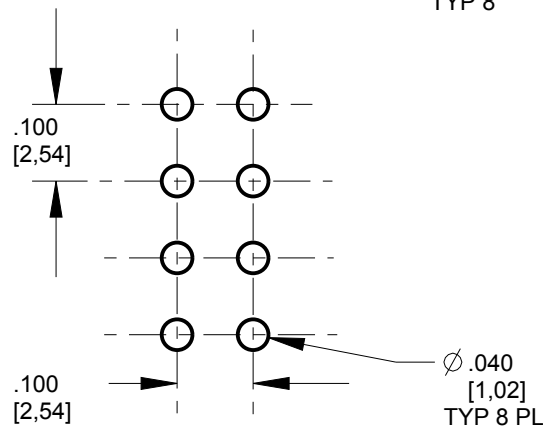
ASSY NUMBER	LED COLOR DIFFUSED	
	TOP POSITION	BOTTOM POSITION
571-0111-102F	RED	RED
571-0122-102F	GREEN	GREEN
571-0132-102F	YELLOW	YELLOW
571-0133-102F	YELLOW	YELLOW

REV	ECN NO	REVISIONS	DRN	CKD	APP	QA	CM	DATE
A	53618	NEW RELEASE	LD	—	NO	—	—	8-9-18

- NOTES:
- LED LEAD DIMENSIONS ARE MEASURED AT HOUSING EXIT
  - PIN NUMBERS FOR REFERENCE ONLY, DESIGNATION NON EXISTENT ON PARTS.
  - THIS PRODUCT IS ROHS COMPLIANT. EACH BAG IS MARKED WITH ROHS COMPLIANT LABEL (9100-117-0852-99) OR EQUIVALENT MARKINGS. LED MUST BE Pb FREE (ROHS COMPLIANT).
  - PART NO. 571-01XX-102F WITH PINS.

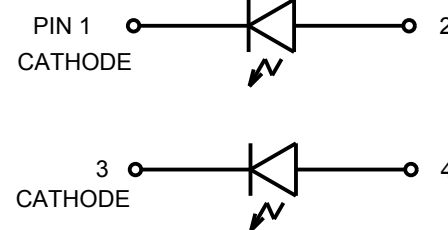


RECOMMENDED HOLE PATRERN GAUGE



OPERATING CHARACTERISTICS AT 25°C AMBIENT						
CHARACTERISTICS	COLOR	MIN	TYP	MAX	UNITS	TEST CONDITIONS
LUMINOUS INTENSITY	RED	8	15		mcd	I <sub>F</sub> = 10 mA
	YELLOW	5	8			
	GREEN	5	10			
FORWARD VOLTAGE	RED		2.0	2.5	V	I <sub>F</sub> = 20 mA
	YELLOW		2.1	2.5		
	GREEN		2.2	2.5		
DOMINANT WAVELENGTH	RED		625		nm	
	YELLOW		588			
	GREEN		568			
PEAK EMISSION WAVELENGTH	RED		627		nm	
	YELLOW		590			
	GREEN		565			
VIEWING ANGLE 2q1/2	RED		70		Degree	
	YELLOW		70			
	GREEN		70			
CAPACITANCE	RED		15		pF	V <sub>F</sub> = 0 V, f = 1 MHz
	YELLOW		20			
	GREEN		15			

ABSOLUTE MAXIMUM RATING AT 25°C AMBIENT				RED	YELLOW	GREEN	UNITS
POWER DISSIPATION				105	105	105	mW
FORWARD CURRENT				30	30	25	mA
DERATING LINEAR FROM 25°C				.40		.33	mA/°C
REVERSE VOLTAGE				5			V
LEAD SOLDERING TEMPERATURE, 5 SEC., 1/16" FROM BODY				260			°C
OPERATING TEMPERATURE				-40 TO +85			°C
STORAGE TEMPERATURE				-40 TO +85			°C



THIS DRAWING AND THE CONTENTS HEREIN ARE CONFIDENTIAL AND THE SOLE PROPERTY OF DIALIGHT CORP. REPRODUCTION OF THIS DRAWING OR CONSTRUCTION OF ANY PARTS WITHIN THIS DRAWING ARE FORBIDDEN WITHOUT THE WRITTEN CONSENT OF DIALIGHT CORP.

DIALIGHT CORP INTERNAL REFERENCE ONLY = 3D MODEL : 57101XX102F-A4

SCALE: 4.000	DRAWING NUMBER	REV
ALL DIM'S: INCH (mm)	C18394	A
TOLERANCES: UNLESS OTHERWISE SPECIFIED	TITLE	
FRACTIONS: ±1/64	2mm BI-LEVEL CBI GANGED ARRAY	
DECIMALS (.XX): ±.01	MATERIAL	
DECIMALS (.XXX): ±.005	-	
DECIMALS (.XXXX): ±.0005	FINISH	
ANGLES: ±1°	-	
FSCM 83330	SHEET 1 OF 1 FAMILY TABLE:	

**Dialight** 1501 ROUTE 34 SOUTH FARMINGDALE, NJ 07727 (732) 919-3119 www.dialight.com