

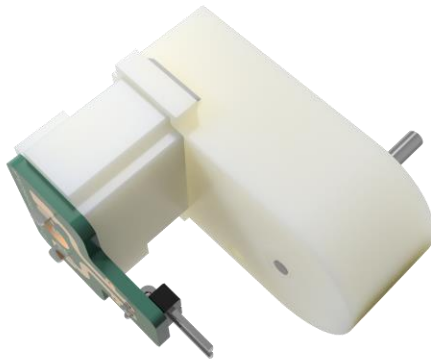
Solderless Gear Motor

www.kitronik.co.uk/2591



Introduction: The Solderless Motor provides 0.1" (2.54mm) pitch male pins to allow connection of the motor to a breadboard, terminal blocks etc. without requiring soldering. Jumper cables are an ideal method of connection (making sure one end of the cable has a female connection).

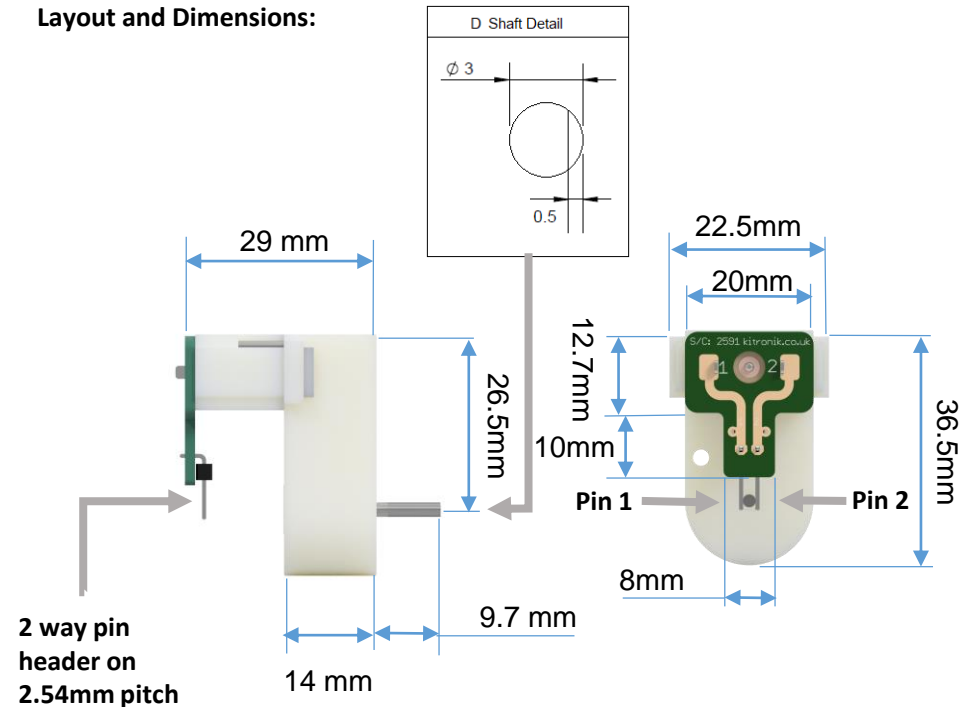
The Solderless Motor is ideal for use with a Motor Driver board such as: www.kitronik.co.uk/5620.



Electrical Information

Operating Voltage Range (Vcc)	3V - 6V
Stall current	800mA @ +4.5V
Free-run speed	150rpm @ +4.5V
Gear ratio	120 : 1

Layout and Dimensions:



Suppression Capacitor: There is space for adding a suppression capacitor. This can be fitted depending on application required

Wiring Orientation

Pin 1	Pin 2	Rotation (from shaft side)
+Vcc	0V	Clockwise
0V	+Vcc	Anti-Clockwise