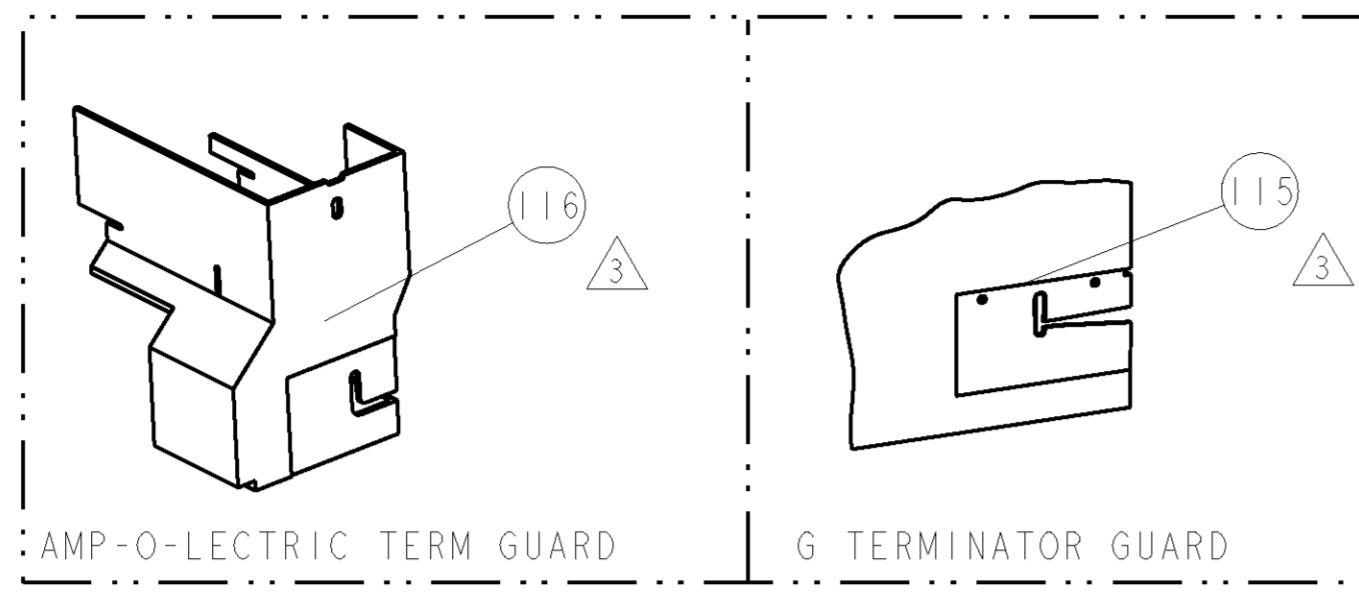


PART NUMBER	REV	FIRST USED	POWER UNIT	FEED TYPE	DESCRIPTION
1855290-1	B	122500-1	LEADMAKER	POST FEED	CUTS CARRIER
1855290-2	B	565435-5	BENCH MODEL K	PRE FEED	CUTS CARRIER
1855290-3	B	354500-1	BENCH MODEL G	PRE FEED	CUTS CARRIER
7-1855290-7	A	-	-	-	SPARE PARTS

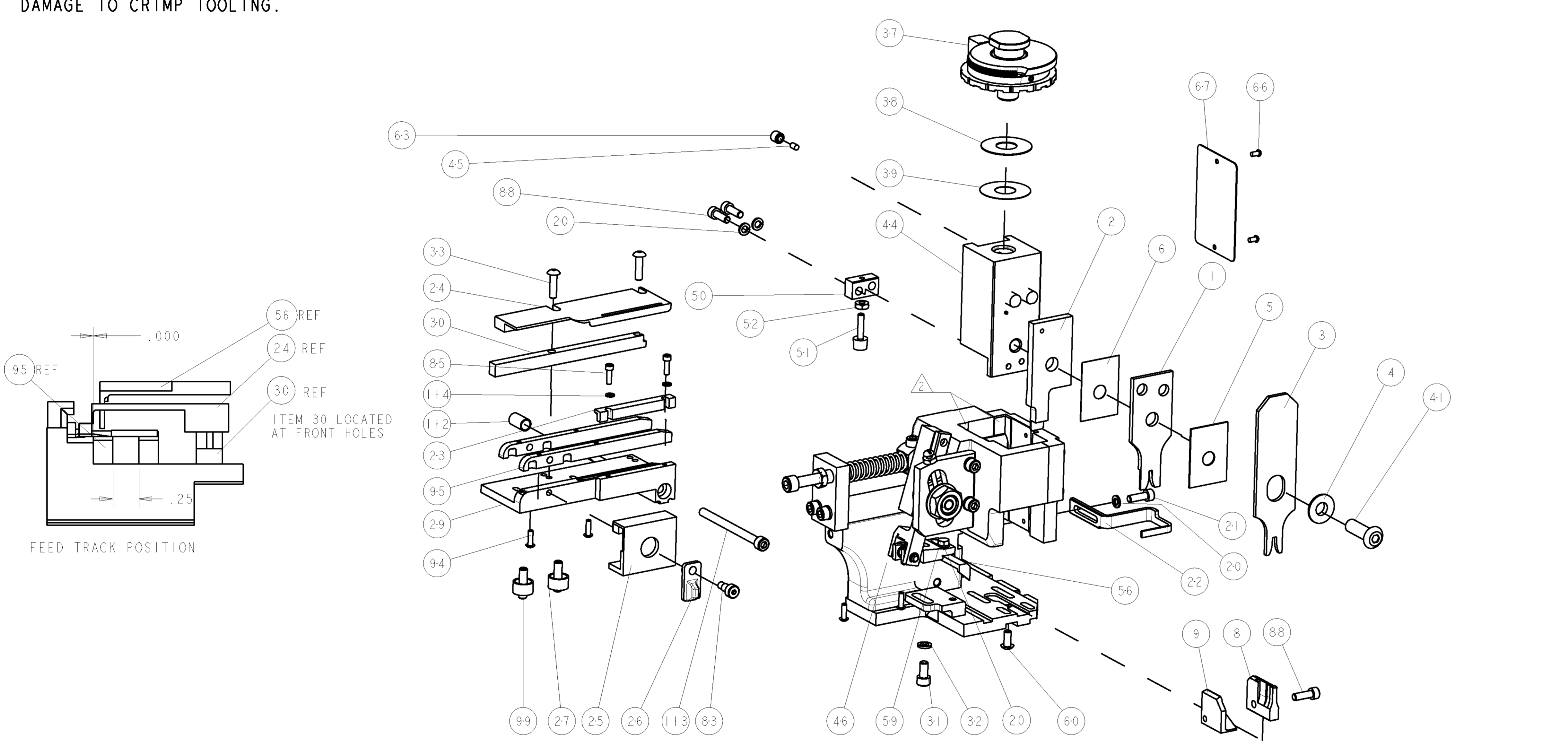


TE PN	MFR PN	TE PN	MFG PN	MOLEX TERMINAL - MOLEX CRIMP SPECS	REF	SETTING
940318-1	02-09-2116	940319-1	02-09-1117			
940318-2	02-09-6122	940319-2	02-09-5143	CRIMP HEIGHT		
940318-3	02-09-6125	940319-3	02-09-5130	.0565±.0015 [1.45±0.05mm]	18AWG	B8
940318-4	02-09-1151	940319-4	02-09-1122	.0525±.0015 [1.35±0.05mm]	20AWG	C4
940318-5	02-09-8103	940319-5	02-09-1203	.050±.002 [1.27±0.05mm]	22AWG	C9
940318-6	02-09-2117	940319-6	02-09-1208	-	-	-
940318-7	02-09-2127	940319-7	02-09-1115	-	-	-
940318-8	39-00-0283	940319-8	02-09-1116	-	-	-
940318-9	02-09-2201	940319-9	02-09-1119	CRIMP	SIZE	TYPE
1-940318-0	02-09-1151	1-940319-0	39-00-0284	WIRE	.080 [2.03mm]	F
-	-	1-940319-1	39-00-0285	INSUL	.122 [3.10mm]	F
-	-	1-940319-2	02-09-1201	FEED	.498	APPLICATOR INSTRUCTIONS 408-8040
WIRE STRIP LENGTH	TERM APPL SPEC					SET UP GAGE 458637-1
.140 - .155	NONE					

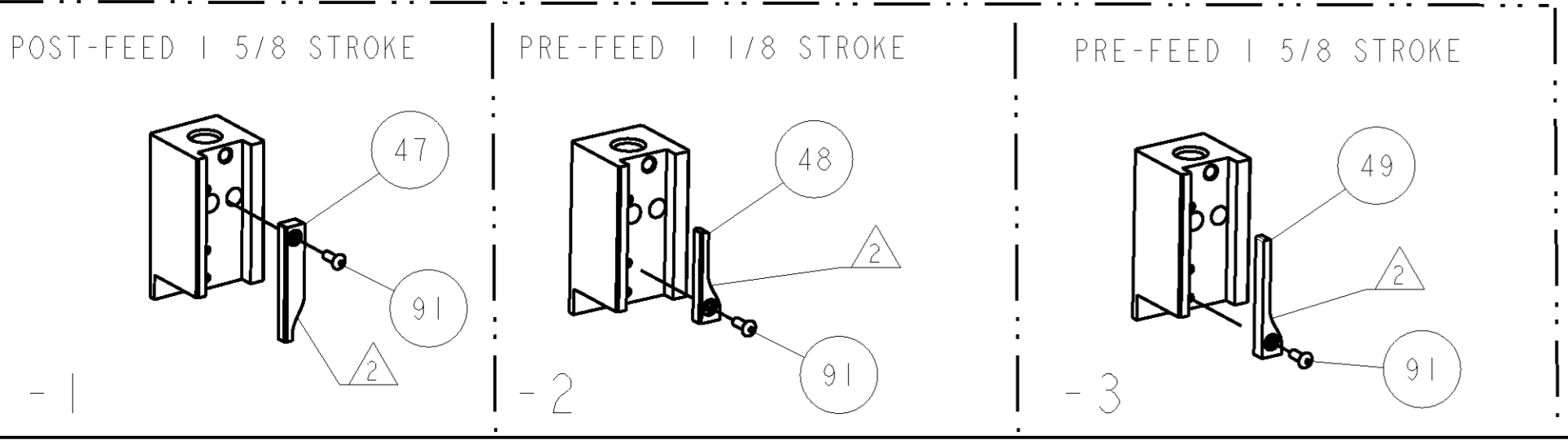
LOC	DIST	REV	DESCRIPTION	DATE	OWN	APVD
A	66	A	PRODUCT RELEASE	17JUL2007	CMR	GB
		B	ECR-10-015111	19JUL2010	MY	TE
		B1	ECR-10-019862	26SEP2010	RS	SK

- 1 RECOMMENDED SPARE PARTS
- 2 GREASE LIGHTLY
- 3 GUARD MUST BE IN PLACE WHEN OPERATING APPLICATOR IN A BENCH MACHINE

**\* WARNING**  
ON INSTALLATION, SET WIRE DISC TO LARGEST WIRE SIZE SETTING. USE OF SETTINGS BELOW MIN. REQUIRED CRIMP HEIGHT SETTING WILL CAUSE DAMAGE TO CRIMP TOOLING.



REF	QTY	DESCRIPTION	ITEM NO	
-	-	REF - .. 455749-1	GUARD WINDOW	116
-	-	REF - .. 679532-1	INSERT, GUARD	115
-	-	2 21024-2	WASHER, SPRG LOCK, REG NO 4	114
-	-	1 8-21000-7	SCR, SKT HD CAP 10-32 X 2.500	113
-	-	1 1-22281-8	SPRING, COMPRESSION	112
-	-	2 2 5-21006-6	SCR, SET, CUP POINT 10-32 X .750	99
-	-	2 2 189807-9	FENCE	95
-	-	4 4 1-21002-4	SCR, BTN SKT HD CAP 4-40 X .375	94
-	-	1 1 1-21002-7	SCR, BTN SKT HD CAP 6-32 X .375	91
-	-	1 1 2-21000-7	SCR, SKT HD CAP 8-32 X .500	88
-	-	2 2 1-21000-4	SCR, SKT HD CAP 4-40 X .375	85
-	-	1 1 21989-8	SCR, SKT HD SHLDR 3/16 DIA X .250	83
-	-	1 1 4088040	SF APPL INST 408-8040	72
-	-	1 1 217238-1	GENERAL INSTRUCTION PKG	71
-	-	1 1 461264-5	PLATE, IDENTIFICATION	67
-	-	2 2 21017-2	SCREW, DRIVE	66
-	-	1 1 21009-2	SCR, SET, SELF LOCKING 1/4-20 X .250	63
-	-	1 1 22733-8	SCR, BHSC, SELF-LOCKING, 8-32 X .375	60
-	-	1 1 2-22603-1	SCREW, MACH, HEX HD, 8-32 x .375	59
-	-	1 1 3-694433-2	FEED PAWL	56
-	-	2 2 2-21000-7	SCR, SKT HD CAP 8-32 X .500	53
-	-	1 1 21018-5	NUT, HEX, REG 6-32	52
-	-	1 1 811242-2	BUMPER, HOLD DOWN	51
-	-	1 1 690753-1	SPACER, TONKER	50
-	-	1 1 690602-6	CAM, PRE FEED, 1 5/8	49
-	-	1 1 690602-5	CAM, PRE FEED, 1 1/8	48
-	-	1 1 690501-4	CAM, POST-FEED 1 5/8	47
-	-	1 1 459456-1	APPL, BASIC SUB ASSY (SIDE WISE MOCA)	46
-	-	1 1 690191-1	PLUG, NYLON	45
-	-	1 1 455673-8	RAM, SIDE FEED	44
-	-	1 1 690686-2	CRIMPER, BOLT SPECIAL	41
-	-	1 1 690125-1	SHIM SUB-ASSY	39
-	-	1 1 469367-9	SHIM	38
-	-	1 1 879103-3	FINE ADJUST HEAD ASSEMBLY	37
-	-	2 2 2-21002-3	SCR, BTN SKT HD CAP 8-32 X .625	33
-	-	1 1 21024-5	WASHER, SPRG LOCK, REG NO 10	32
-	-	1 1 3-21000-4	SCR, SKT HD CAP 10-32 X .375	31
-	-	1 1 1-1320908-1	SPACER, STRIP GUIDE	30
-	-	1 1 1-1633087-6	PLATE, STRIP GUIDE	29
-	-	2 2 22284-1	SPRING, COMPRESSION	27
-	-	1 1 356835-1	LEVER, DRAG RELEASE	26
-	-	1 1 2-690754-1	DRAG, SPECIAL	25
-	-	1 1 1-1320860-5	STRIP GUIDE, REAR	24
-	-	1 1 1-690712-7	FRONT STRIP GUIDE	23
-	-	1 1 1-458230-5	STRIPPER	22
-	-	1 1 2-21000-7	SCR, SKT HD CAP 8-32 X .500	21
-	-	4 4 21024-4	WASHER, SPRG LOCK, REG NO 8	20
-	-	1 1 2-853714-0	PLATE, REAR SHEAR	9
-	-	1 1 1633054-1	ANVIL, SPECIAL	8
-	-	1 1 455888-2	SPACER, CRIMPER	6
-	-	1 1 455888-6	SPACER, CRIMPER	5
-	-	1 1 238009-8	BLOCK, FL CRIMPER SPACER	4
-	-	1 1 1-456134-0	CRIMPER, INSULATION F PREMIUM	3
-	-	1 1 1-853720-4	BLADE, SLUG	2
-	-	1 1 3-456405-9	CRIMPER, WIRE PREMIUM	1



INCHES	TOLERANCES UNLESS OTHERWISE SPECIFIED:	FINISH	WEIGHT	SCALE	SHEET	OF	REV
1	0 PLC ±.010 1 PLC ±.005 2 PLC ±.002 3 PLC ±.001 4 PLC ±.0001			3:5	1	1	B1