

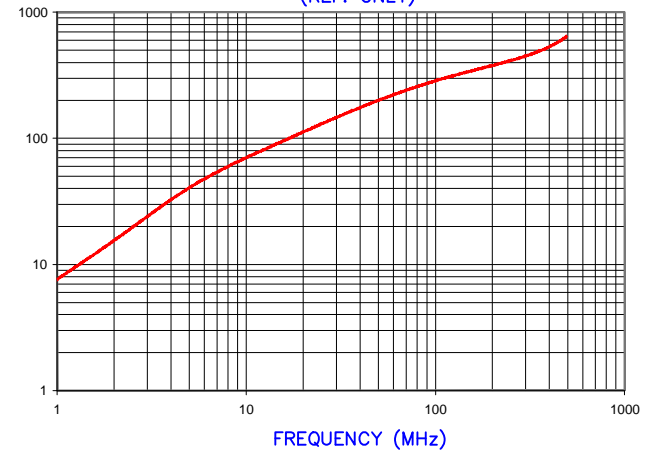
CORE DIMENSIONS:

| | | | |
|---|---------------|---|-------------|
| A | 25.91 [1.020] | + | 0.70 [.028] |
| B | 13.06 [.514] | + | 0.45 [.018] |
| C | 28.58 [1.125] | + | 0.64 [.025] |
| D | 12.95 [.510] | + | 0.40 [.016] |

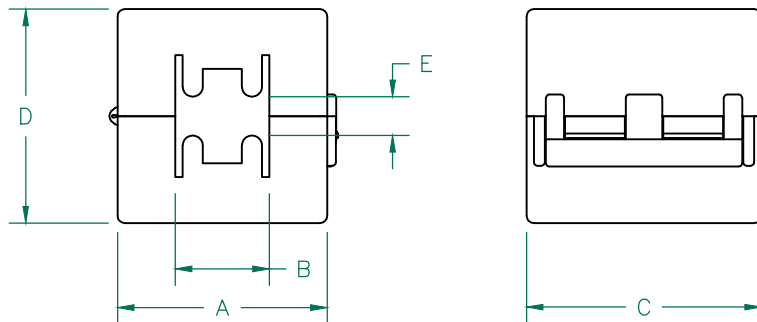
| IMPEDANCE (Z) | | | |
|-----------------|--------|---------|---------|
| Frequency | 25 MHz | 100 MHz | 300 MHz |
| Nominal (REF) | 130 Ω | 280 Ω | 440 Ω |
| Minimum | - Ω | 224 Ω | - Ω |

Z vs. FREQUENCY
(REF. ONLY)

(Ω)



AGILENT E4991A Impedance/Material Analyzer
HP 16092A-Test Fixture, REF 3158



CASE DIMENSIONS:

| | | | |
|---|---------------|---|------|
| A | 29.00 [1.142] | + | REF. |
| B | 13.00 [.512] | + | REF. |
| C | 32.50 [1.280] | + | REF. |
| D | 29.62 [1.166] | + | REF. |
| E | 5.64 [.222] | + | REF. |

NOTES:

- ASSEMBLED PART #: 28A2024-0A0
- CASE COLOR: WHITE.

| DIMENSIONS ARE IN mm[INCHES]. | | | | This print is the property of Laird Tech. and is loaned in confidence subject to return upon request and with the understanding that no copies shall be made without the written consent of Laird Tech. All rights to design or invention are reserved. | | | | | |
|-------------------------------|---|----------|------|---|--|--|---|--------------------|-----|
| REV | DESCRIPTION | DATE | INT | | | | | | REV |
| T | UPDATE CORE TOL | 12/23/15 | Jcai | PROJECT/PART NUMBER: 28A2024-0A0 | | | T | FERRITE SNAP ON | JAZ |
| S | UPDATE 100 MHz MINIMUM VALUE CORRECT CASE DIM "B" TOLERANCE SYMBOL | 06/07/07 | TMB | | | | | | |
| R | UPDATE COMPANY LOGO | 04/18/07 | TMB | DATE: 01/08/93 SCALE: NTS MATERIAL: FERRITE | | | - | - | - |
| Q | CHANGE CASE TOLERANCES TO REF. UPDATE "D" DIM ON CASE AND ADD E DIM TO CASE REMOVE CORE & CASE P/N REFERENCE REVISE NOTES | 08/24/06 | TMB | | | | | | |
| P | CHANGE P/N FROM 0A*, ADD REF # UPDATE NOTES AND Z SPECS | 06/28/04 | JRK | CAD # 28A2024-0A0-T | | | - | - | - |
| REV | DESCRIPTION | DATE | INT | | | | | | |