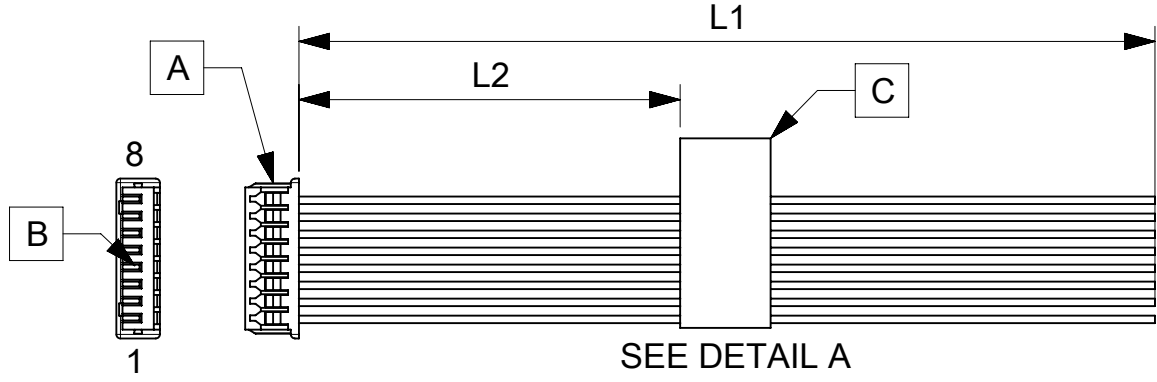
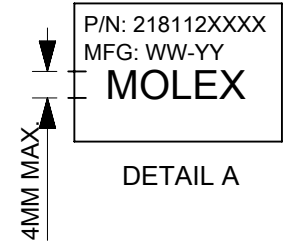


| ITEM | PART# | DESCRIPTION | QTY | UOM |
|------|-----------|---|-----|-----|
| A | 510210800 | PicoBlade1.25 Rec Hsg 8P | 1 | PC |
| B | 500588000 | PicoBlade1.25 Crimp Rec Term Chain Tin | 8 | PC |
| C | -- | Blank label 12.7x35.5mm (WHT:12.7mm) HF | 1 | PC |

| FROM | TO | DESCRIPTION | COLOR |
|------|----|----------------------------|-------|
| A1 | -- | CABLE 28 AWG UL 1061 BLACK | BLACK |
| A2 | -- | CABLE 28 AWG UL 1061 BLACK | BLACK |
| A3 | -- | CABLE 28 AWG UL 1061 BLACK | BLACK |
| A4 | -- | CABLE 28 AWG UL 1061 BLACK | BLACK |
| A5 | -- | CABLE 28 AWG UL 1061 BLACK | BLACK |
| A6 | -- | CABLE 28 AWG UL 1061 BLACK | BLACK |
| A7 | -- | CABLE 28 AWG UL 1061 BLACK | BLACK |
| A8 | -- | CABLE 28 AWG UL 1061 BLACK | BLACK |



| TABLE | | | |
|-------------|-------|----------|---|
| PART NUMBER | L1 | L2 (REF) | TITLE |
| 2181120800 | 75±5 | 30 | 8 CIRCUIT PICOBLADE R:BLUNT CABLE 75MM |
| 2181120801 | 150±6 | 70 | 8 CIRCUIT PICOBLADE P:BLUNT CABLE 150MM |
| 2181120802 | 225±6 | 105 | 8 CIRCUIT PICOBLADE R:BLUNT CABLE 225MM |
| 2181120803 | 300±8 | 145 | 8 CIRCUIT PICOBLADE R:BLUNT CABLE 300MM |
| 2181120804 | 425±8 | 205 | 8 CIRCUIT PICOBLADE R:BLUNT CABLE 425MM |



- NOTES**
1. Connector view shown is from mating side.
 2. Free ends must be blunt cut.
 3. Label text must be 2mm max. in height with Arial font.
 4. Label must be wrapped in flag type on the cables.

| REVISION | | | |
|------------|-----|-----------------|---------|
| DATE | REV | DESCRIPTION | CHANGER |
| 04/03/2021 | A | INITIAL RELEASE | ARAJU |

| | | | | |
|-----------------|----|--------------|------------|----------|
| DOCUMENT STATUS | P1 | RELEASE DATE | 2021/03/26 | 04:03:45 |
|-----------------|----|--------------|------------|----------|

| | | | | | | | |
|---|---|--|---------------------------------------|----------------------------|---------------------------------|----------|----------|
| FUNCTIONAL SYMBOLS $\frac{E}{A} = 0$ $\frac{E}{E} = 0$ $\frac{E}{P} = 0$ DIVISIONAL SYMBOLS | THIS DRAWING CONTAINS INFORMATION THAT IS PROPRIETARY TO MOLEX ELECTRONIC TECHNOLOGIES, LLC AND SHOULD NOT BE USED WITHOUT WRITTEN PERMISSION | | CURRENT REV DESC: | | | | |
| | DIMENSION UNITS | SCALE | GENERAL TOLERANCES (UNLESS SPECIFIED) | | | | |
| | mm | NTS | ANGULAR TOL ± ° | | | | |
| | 4 PLACES ± | | 3 PLACES ± | | | | |
| 3 PLACES ± | | 2 PLACES ± | | EC NO: 659320 | PRODUCT CUSTOMER DRAWING | | |
| 2 PLACES ± | | 1 PLACE ± | | DRWN: ARAJU 2021/03/04 | | | |
| 1 PLACE ± | | 0 PLACES ± | | CHK'D: RDESAI01 2021/03/26 | 2181120800 | | |
| 0 PLACES ± | | DRAFT WHERE APPLICABLE MUST REMAIN WITHIN DIMENSIONS | | APPR: RDESAI01 2021/03/26 | | | |
| THIRD ANGLE PROJECTION | | DRAWING | SERIES | DOCUMENT NUMBER | DOC TYPE | DOC PART | REVISION |
| | | A4-SIZE | 218112 | 2181120800 | PSD | 000 | A |
| MATERIAL NUMBER | | CUSTOMER | | SHEET NUMBER | | | |
| SEE TABLE | | GENERAL MARKET | | 1 OF 1 | | | |