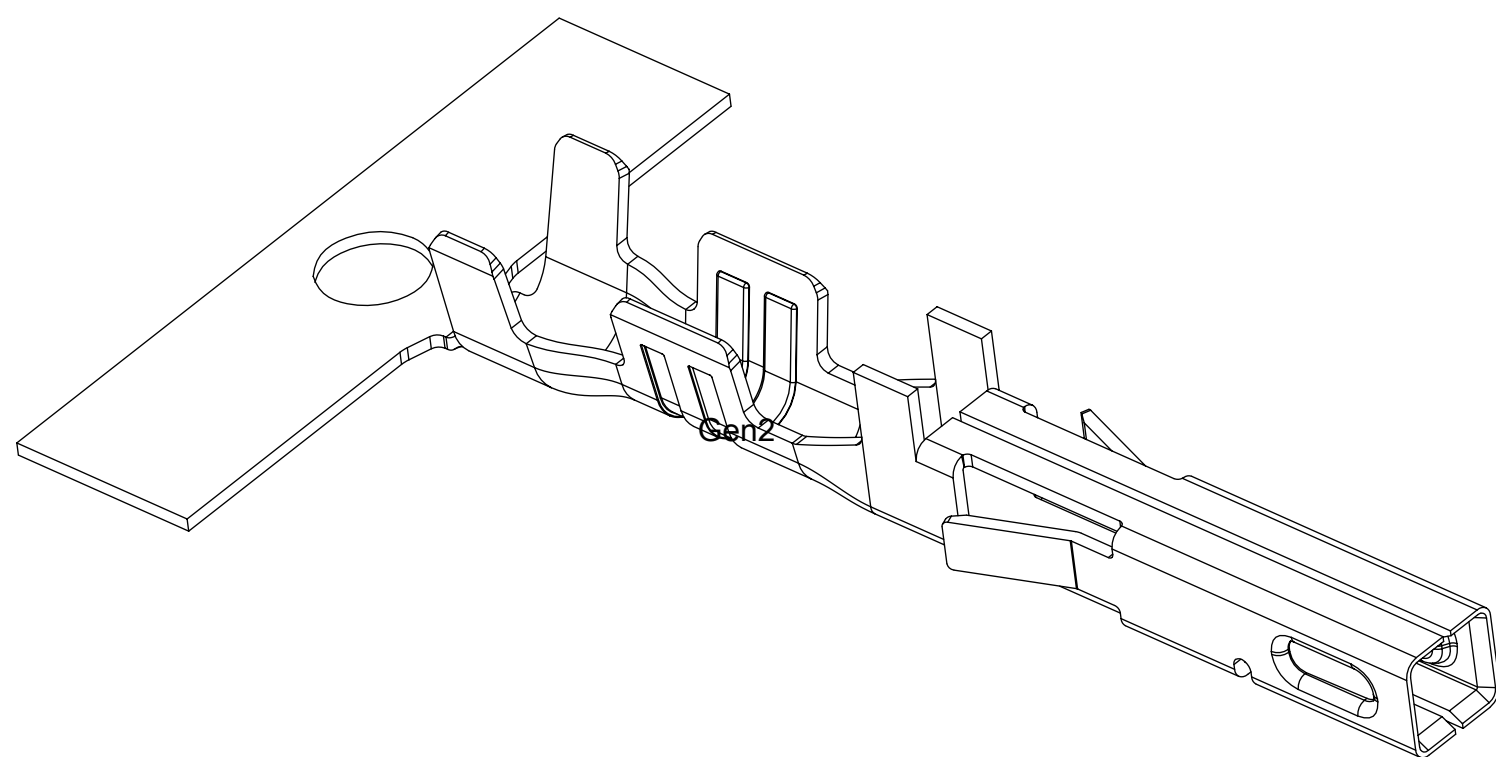
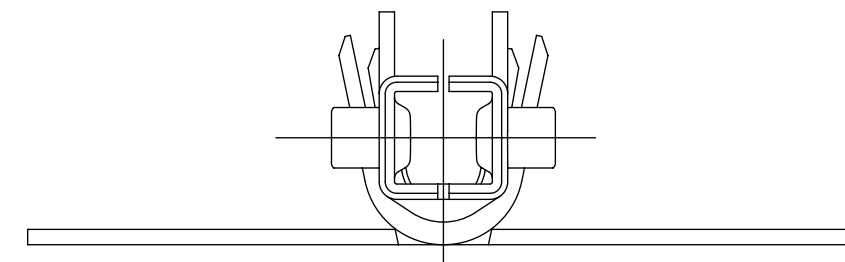
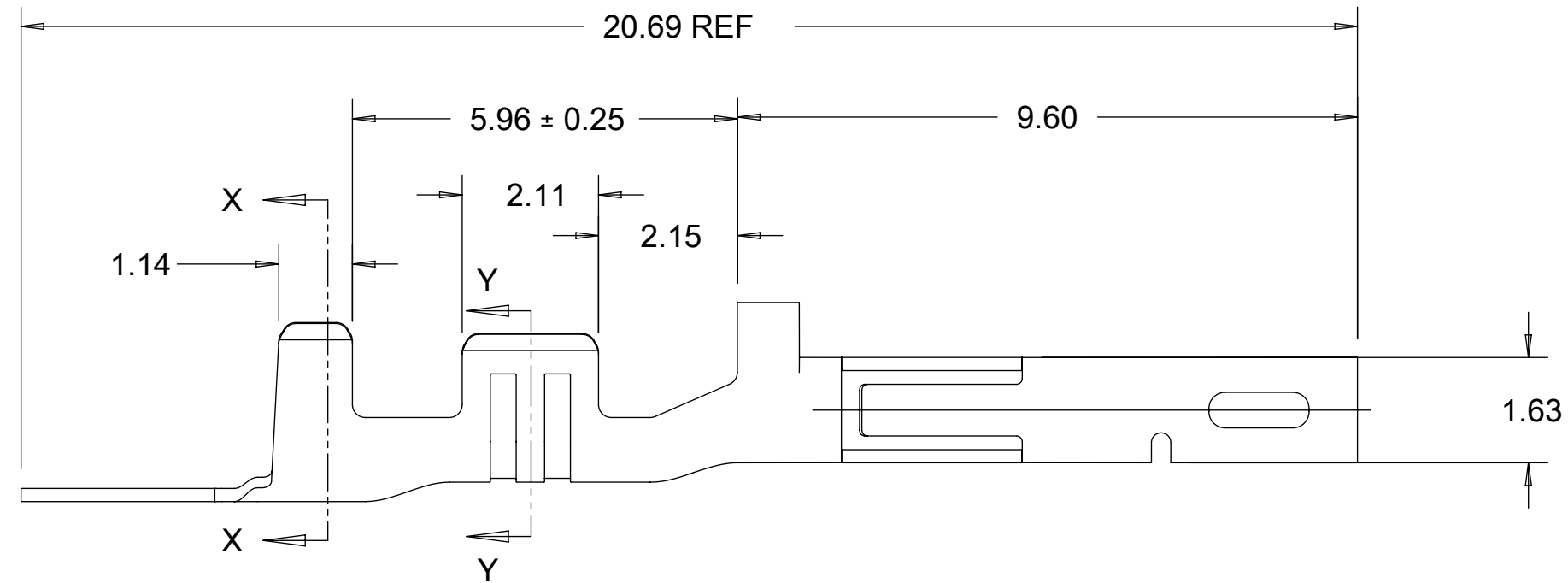
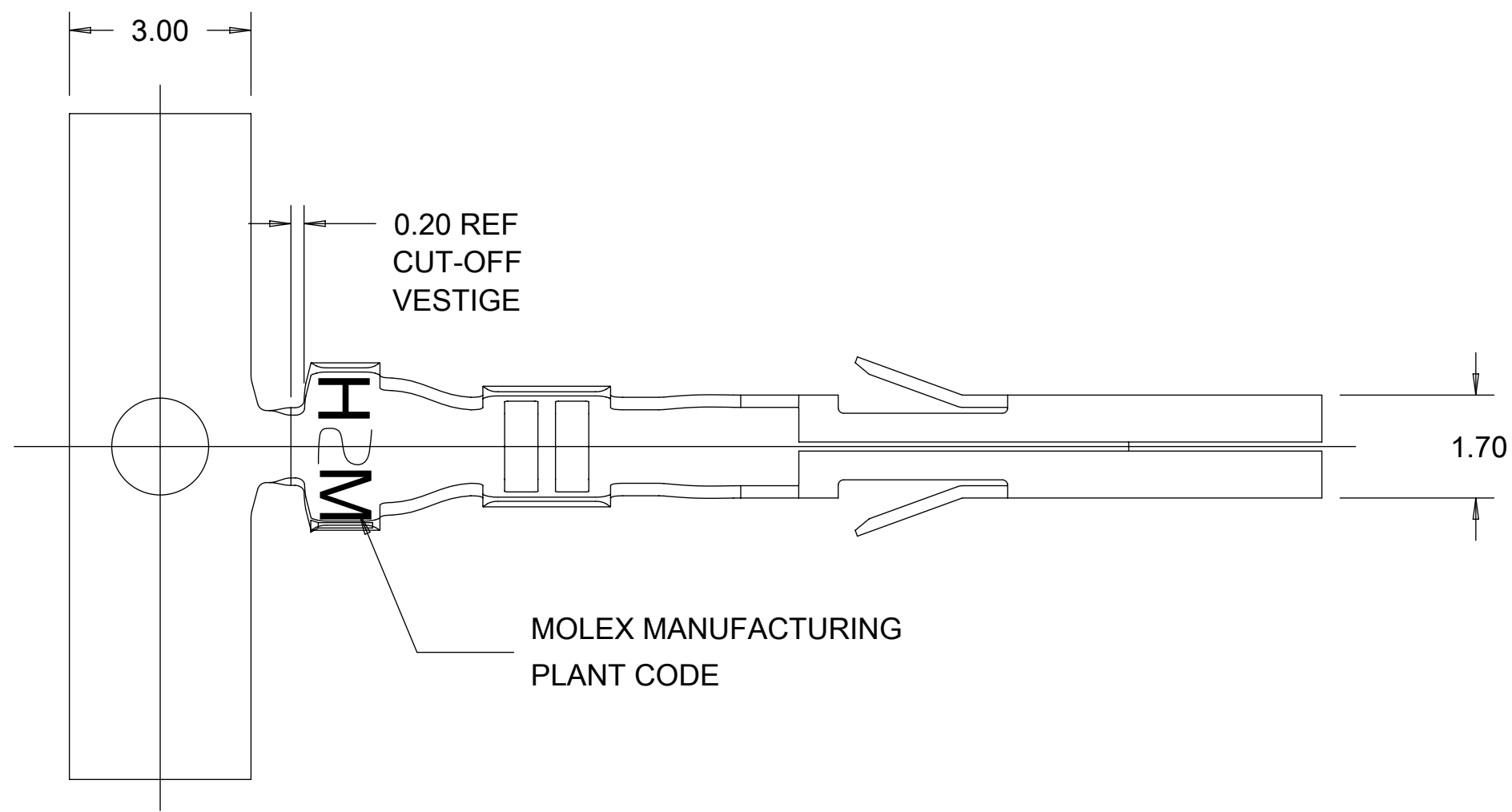


PART LEGEND

172718- * * * *

SERIES	FORM
WIRE GAGE (INS OD RANGE)	1 = CHAIN 2 = LOOSE
1 = 16 (Ø1.98-2.55)	MATERIAL
2 = 16 (Ø2.55-3.14)	1 = PHOS BRONZE 2 = BRASS
3 = 18-20 (Ø1.42-2.10)	PLATING
4 = 18-20 (Ø2.10-2.85)	1 = HOT TIN DIP (PRE-PLATE)
5 = 22-24 (Ø1.07-1.65)	
6 = 22-24 (Ø1.65-2.38)	

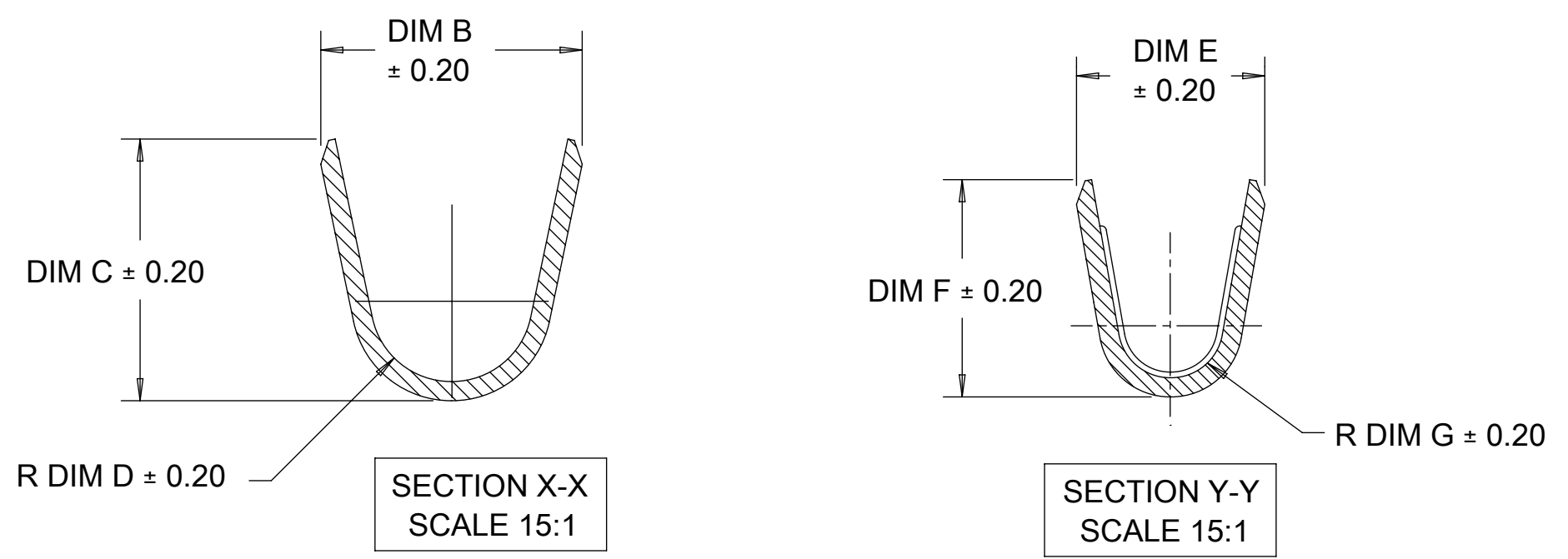
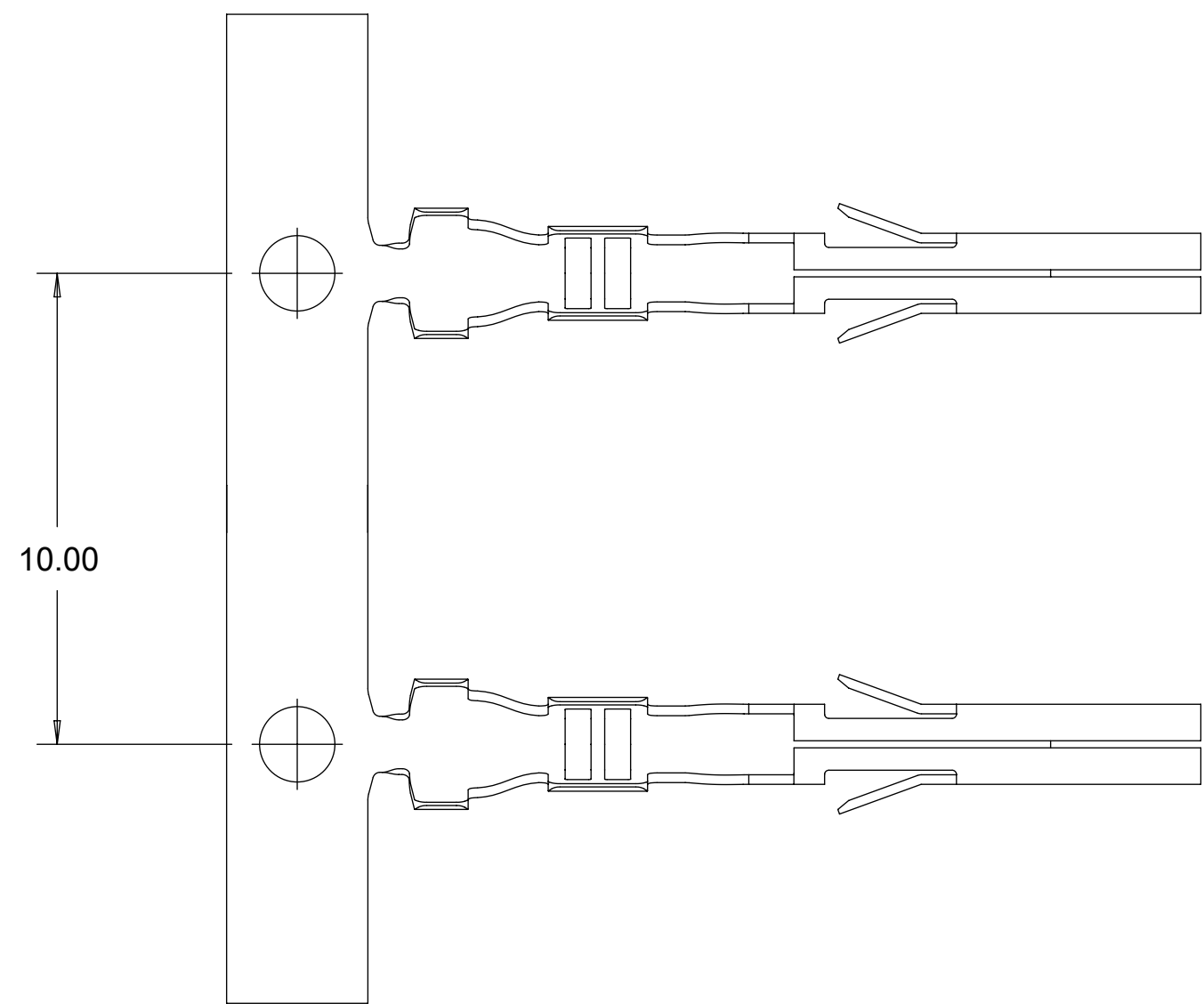
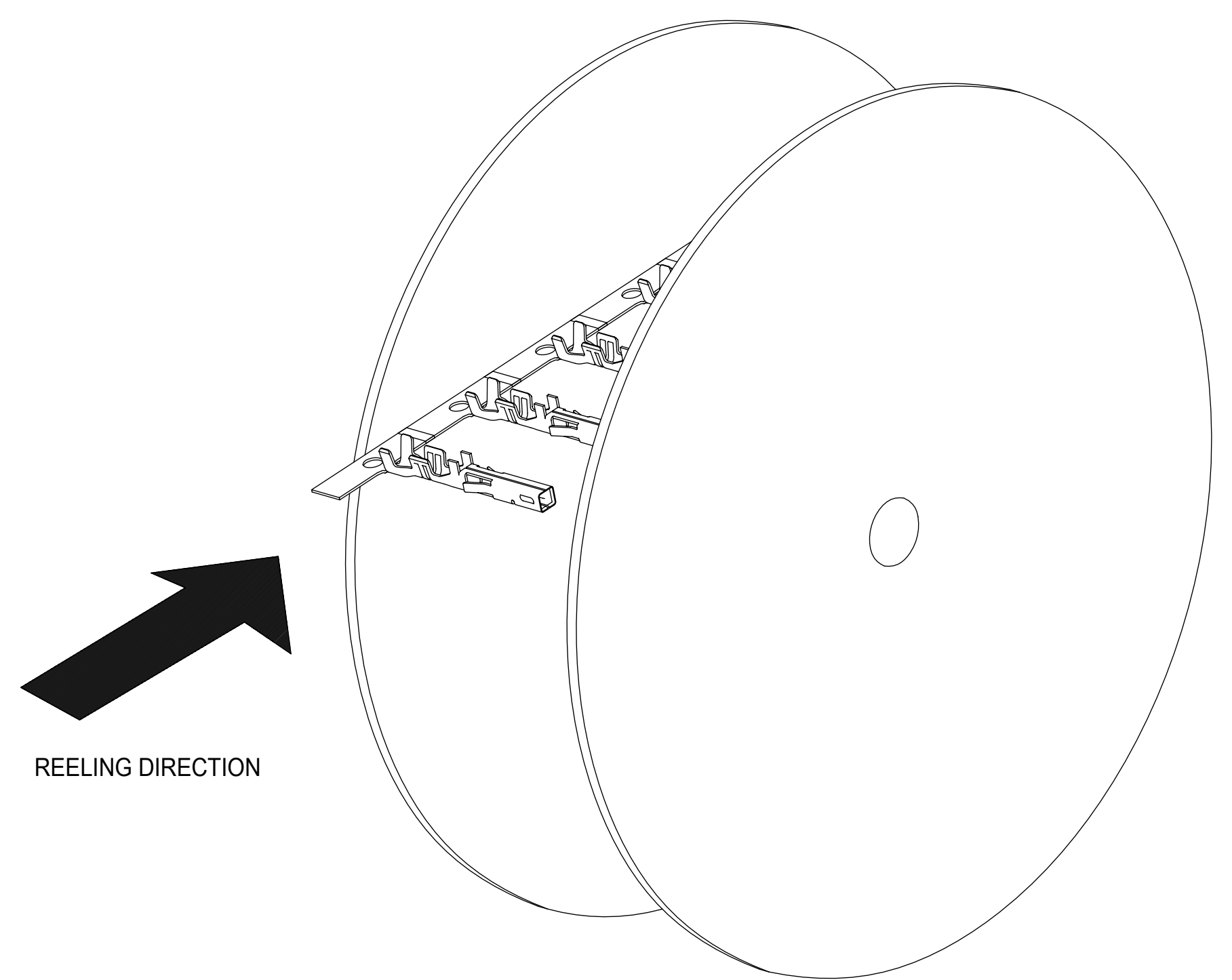


NOTES:

- MATERIALS:
PHOS BRONZE ALLOY
BRASS ALLOY
- PRE-PLATED: HOT TIN DIP, OVERALL 2.5 m MIN. TIN.
- PRODUCT SPECIFICATION: PS-172718-0000
APPLICATION SPECIFICATION: AS-172718-0000
- THIS TERMINAL TO BE USED WITH HOUSING SERIES 172708.
- THIS TERMINAL MATES WITH MALE CRIMP TERMINAL SERIES 5558, 46012 & 172765.
- THIS TERMINAL MATES WITH HEADER SERIES 5566 & 5569.
- PACKAGING: REELS TO BE PACKED PER PK-172718-0000
LOOSE TERMINALS PER PK-172718-0001.
- PART CONFORMS TO CLASS 'B' REQUIREMENTS OF COSMETIC SPEC PS-45499-002.
- WHEN TERMINALS ARE INSTALLED IN THE HOUSING THE WIRE ARE TO BE DRESSED IN SUCH A MANNER TO ALLOW THE TERMINALS TO FLOAT FREELY IN THE HOUSING POCKET.
- THIS TERMINALS IS DESIGNED FOR SINGLE WIRE CRIMPING.

THIS DRAWING CONTAINS INFORMATION THAT IS PROPRIETARY TO MOLEX INCORPORATED AND SHOULD NOT BE USED WITHOUT WRITTEN PERMISSION											
EC DESCRIPTION 664404 2021/05/14 DRWN: KCHIKKANNA 2021/05/19 CHKD: KCHIKKANNA 2021/05/20 REV / APPR: ISHWARG	GENERAL TOLERANCES (UNLESS SPECIFIED)			DIMENSION UNITS	SCALE	molex					
	ANGULAR TOL ± °			mm	10:1						
	4 PLACES ±	TGREGORI		DATE	CRIMP TERMINAL RECEPTACLE MINI-FIT TPA2 AND SIGMA						
	3 PLACES ±	CHKD BY		DATE	PRODUCT CUSTOMER DRAWING						
	2 PLACES ± 0.10	APPR BY		DATE	SERIES	MATERIAL NUMBER	CUSTOMER				
1 PLACE ± 0.2	RHODGE		2014/12/04	172718	SEE TABLE SHEET 2	GENERAL MARKET					
0 PLACES ±	DRAWING SIZE	THIRD ANGLE PROJECTION		DOCUMENT NUMBER		DOC TYPE	DOC PART	SHEET NUMBER			
DRAFT WHERE APPLICABLE MUST REMAIN WITHIN DIMENSIONS	C			SD-172718-0000		PSD	000	1 OF 2			

	MOLEX PART NUMBER	BASE MAT'L	WIRE AWG	COMBINATION WIRE AWG	WIRE OD RANGE	DIM B	DIM C	DIM D	DIM E	DIM F	DIM G
CHAIN	172718-1111	PHOS BRONZE	16	NA	1.98-2.55	3.27	3.43	1.00	2.35	2.90	0.70
	172718-2111			NA	2.55-3.14	3.74	3.66	1.43			
	172718-3111		18-20	NA	1.42-2.10	2.77	2.77	0.85	2.00	2.30	0.55
	172718-4111			22+22 AWG	2.10-2.85	3.36	3.37	1.25			
	172718-5111		22-24	NA	1.07-1.65	2.33	2.27	0.70	1.68	1.65	0.40
	172718-6111			NA	1.65-2.38	3.14	3.09	1.00			
G	172718-1121	BRASS	16	NA	1.98-2.55	3.27	3.43	1.00	2.35	2.90	0.70
	172718-2121			NA	2.55-3.14	3.74	3.66	1.43			
	172718-3121		18-20	NA	1.42-2.10	2.77	2.77	0.85	2.00	2.30	0.55
	172718-4121			22+22 AWG	2.10-2.85	3.36	3.37	1.25			
	172718-5121		22-24	NA	1.07-1.65	2.33	2.27	0.70	1.68	1.65	0.40
	172718-6121			NA	1.65-2.38	3.14	3.09	1.00			
F	172718-1112	PHOS BRONZE	16	NA	1.98-2.55	3.27	3.43	1.00	2.35	2.90	0.70
	172718-2112			NA	2.55-3.14	3.74	3.66	1.43			
	172718-3112		18-20	NA	1.42-2.10	2.77	2.77	0.85	2.00	2.30	0.55
	172718-4112			NA	2.10-2.85	3.36	3.37	1.25			
	172718-5112		22-24	NA	1.07-1.65	2.33	2.27	0.70	1.68	1.65	0.40
	172718-6112			NA	1.65-2.38	3.14	3.09	1.00			
E	172718-1122	BRASS	16	NA	1.98-2.55	3.27	3.43	1.00	2.35	2.90	0.70
	172718-2122			NA	2.55-3.14	3.74	3.66	1.43			
	172718-3122		18-20	NA	1.42-2.10	2.77	2.77	0.85	2.00	2.30	0.55
	172718-4122			NA	2.10-2.85	3.36	3.37	1.25			
	172718-5122		22-24	NA	1.07-1.65	2.33	2.27	0.70	1.68	1.65	0.40
	172718-6122			NA	1.65-2.38	3.14	3.09	1.00			



THIS DRAWING CONTAINS INFORMATION THAT IS PROPRIETARY TO MOLEX INCORPORATED AND SHOULD NOT BE USED WITHOUT WRITTEN PERMISSION											
EC DESCRIPTION 664404 DRWN: KCHIKKANNA CHKD: KCHIKKANNA REV APPR: ISHWARG	GENERAL TOLERANCES (UNLESS SPECIFIED)		DIMENSION UNITS	SCALE							
	ANGULAR TOL ± °		mm	7:1							
	4 PLACES ±	TGREGORI		DATE	2014/09/09						
	3 PLACES ±	CHKD BY		DATE							
	2 PLACES ± 0.10	APPR BY		DATE	RHODGE 2014/12/04						
1 PLACE ± 0.2	DRAWING SIZE		THIRD ANGLE PROJECTION	SERIES		MATERIAL NUMBER		CUSTOMER			
0 PLACES ±	C			172718	SEE TABLE		GENERAL MARKET				
DRAFT WHERE APPLICABLE MUST REMAIN WITHIN DIMENSIONS				DOCUMENT NUMBER		DOC TYPE	DOC PART	SHEET NUMBER			
D5				SD-172718-0000		PSD	000	2 OF 2			